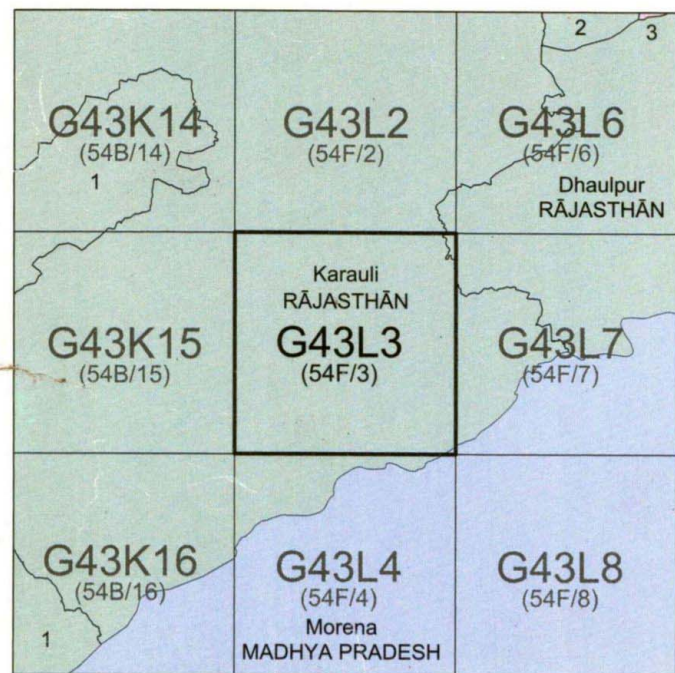




No. G43L3  
Scale 1:50,000



1 Sawai Madhopur, RAJASTHAN.  
2 Bharatpur, RAJASTHAN.  
3 Agra, UTTAR PRADESH.

भारतीय सर्वेक्षण विभाग SURVEY OF INDIA

1st Edition 2011.

Price : Rs. 85/-

CONVENTIONAL SYMBOLS



REFERENCE

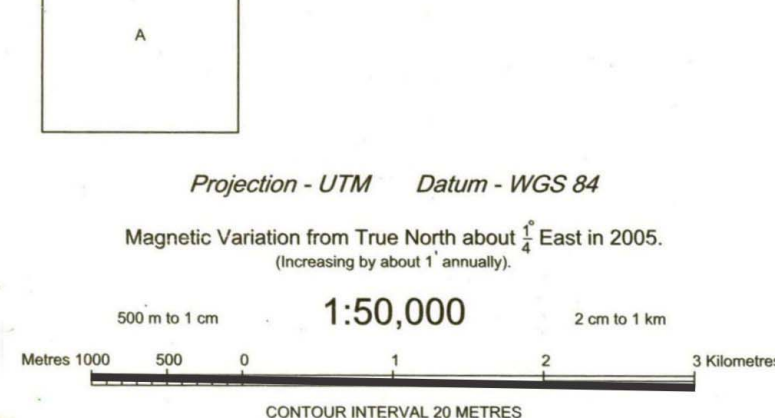
NH 11B National Highway No. 11 B.

NOTES :-

Heights are in metres and above Indian mean sea level.  
Contours are approximate.  
A relative height, e.g., 30', against a well, indicates its total depth in metres.  
Cart tracks in this sheet are generally not shown in dry season. Permission to use those inside Protected Forests is required from the Forest authorities.  
The common boundaries of the Protected Forests in this sheet have not been shown for want of reliable information.  
The state boundary between Madhya Pradesh and Rajasthan states has been surveyed as pointed out by the local officials on the ground but has not been verified by the Governments concerned.  
The North-East quarter of the area appearing on this map is magnetically disturbed and the variation given may differ largely from the actual value.

COMPILED INDEX

A Surveyed during 1963-84. Updated for major details during 2005-06.



For further details about this map, please contact  
Director  
Rajasthan Geo-Spatial Data Centre  
Survey of India  
Sector 10, Vidyanagar  
Jaipur.

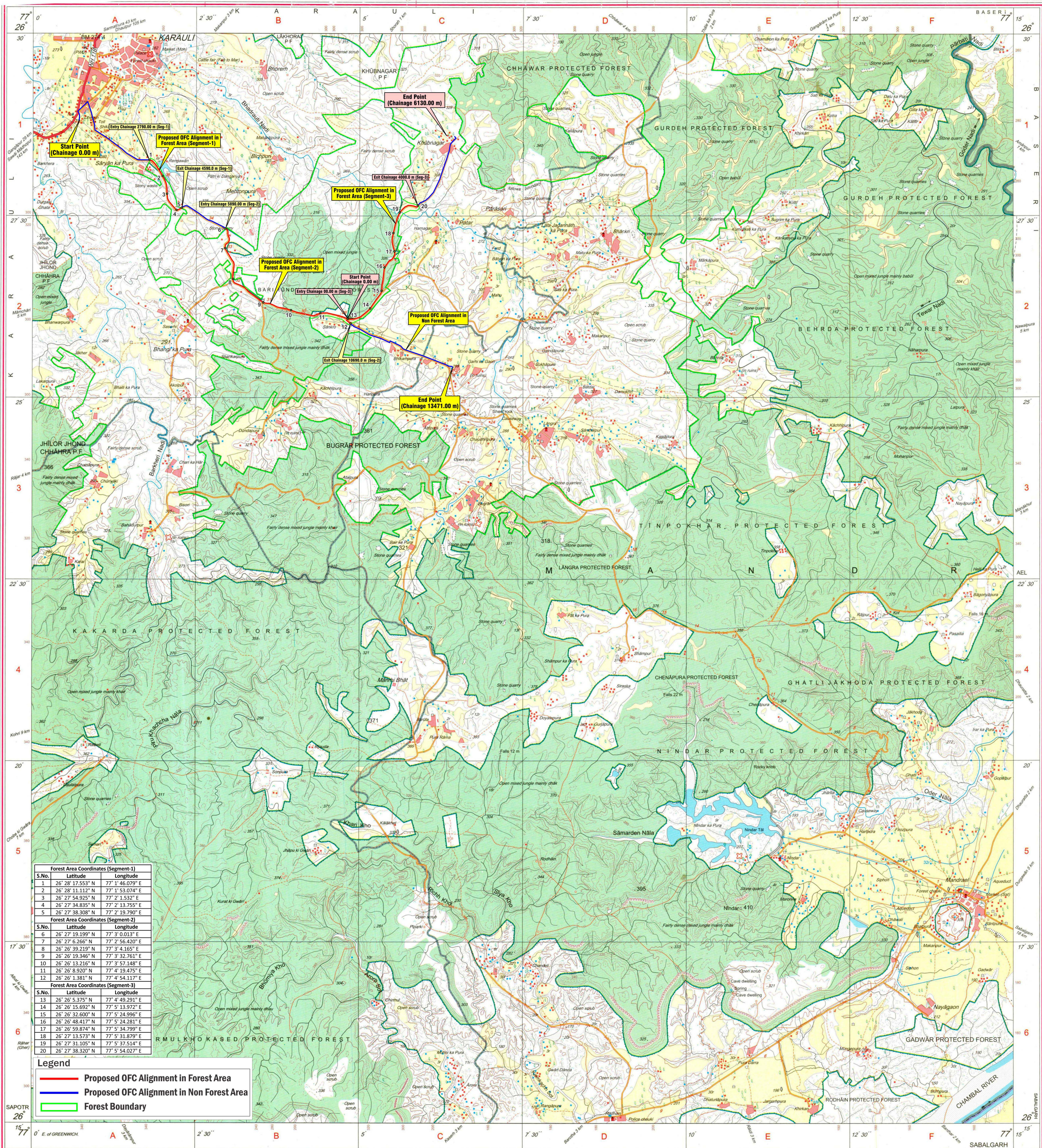
WEBSITE - www.surveyofindia.gov.in

Reproduction in whole or part by any means is prohibited  
without the written permission of Survey of India, the  
National Mapping Agency.

MAP SHOWING GEO-REFERENCED SURVEY OF INDIA TOPSHEET WITH PROPOSED OFC ALIGNMENT

Name of Project : "laying underground OFC along PWD road within existing ROW from Rangama Talaab, Bichipur to Harnagar and Harnagar to Khoobnagar ,Karouli in state of Rajasthan"

Proposal No. : FP/RJ/OFC/150733/2022



Forest Area Coordinates (Segment-1)		
S.No.	Latitude	Longitude
1	26° 28' 17.553" N	77° 1' 46.079" E
2	26° 28' 11.112" N	77° 1' 53.074" E
3	26° 27' 54.925" N	77° 2' 1.532" E
4	26° 27' 34.835" N	77° 2' 13.755" E
5	26° 27' 38.308" N	77° 2' 19.790" E
Forest Area Coordinates (Segment-2)		
S.No.	Latitude	Longitude
6	26° 27' 19.199" N	77° 3' 0.013" E
7	26° 27' 6.266" N	77° 2' 56.420" E
8	26° 26' 39.219" N	77° 3' 4.165" E
9	26° 26' 19.346" N	77° 3' 32.761" E
10	26° 26' 13.216" N	77° 3' 57.148" E
11	26° 26' 8.920" N	77° 4' 39.475" E
12	26° 26' 1.381" N	77° 4' 54.117" E
Forest Area Coordinates (Segment-3)		
S.No.	Latitude	Longitude
13	26° 26' 5.375" N	77° 4' 49.291" E
14	26° 26' 15.692" N	77° 5' 13.972" E
15	26° 26' 32.600" N	77° 5' 24.996" E
16	26° 26' 48.417" N	77° 5' 24.281" E
17	26° 26' 59.874" N	77° 5' 34.799" E
18	26° 27' 13.573" N	77° 5' 31.879" E
19	26° 27' 31.105" N	77° 5' 37.514" E
20	26° 27' 38.320" N	77° 5' 34.027" E

**Legend**  
Proposed OFC Alignment in Forest Area  
Proposed OFC Alignment in Non Forest Area  
Forest Boundary

REG. No. 756 (C) WPG D 11 (Rajasthan GDC-1:50,000) 15/15 (PART P.O. 2.15) '15.

For Telesonic Networks Limited

Authorised Signatory

भारत के महासर्वेक्षक, डॉ. स्वर्ण सुब्बा राव के निदेशन में प्रकाशित,  
Published under the direction of Dr. Swarna Subba Rao, Surveyor General of India,  
Survey of India, Hathibarkala Estate, Post Box No.37, Dehra Dun-248001 (Uttarakhand),  
Department of Science & Technology, Government of India.

PRINTED AT THE WESTERN PRINTING GROUP OF SURVEY OF INDIA.