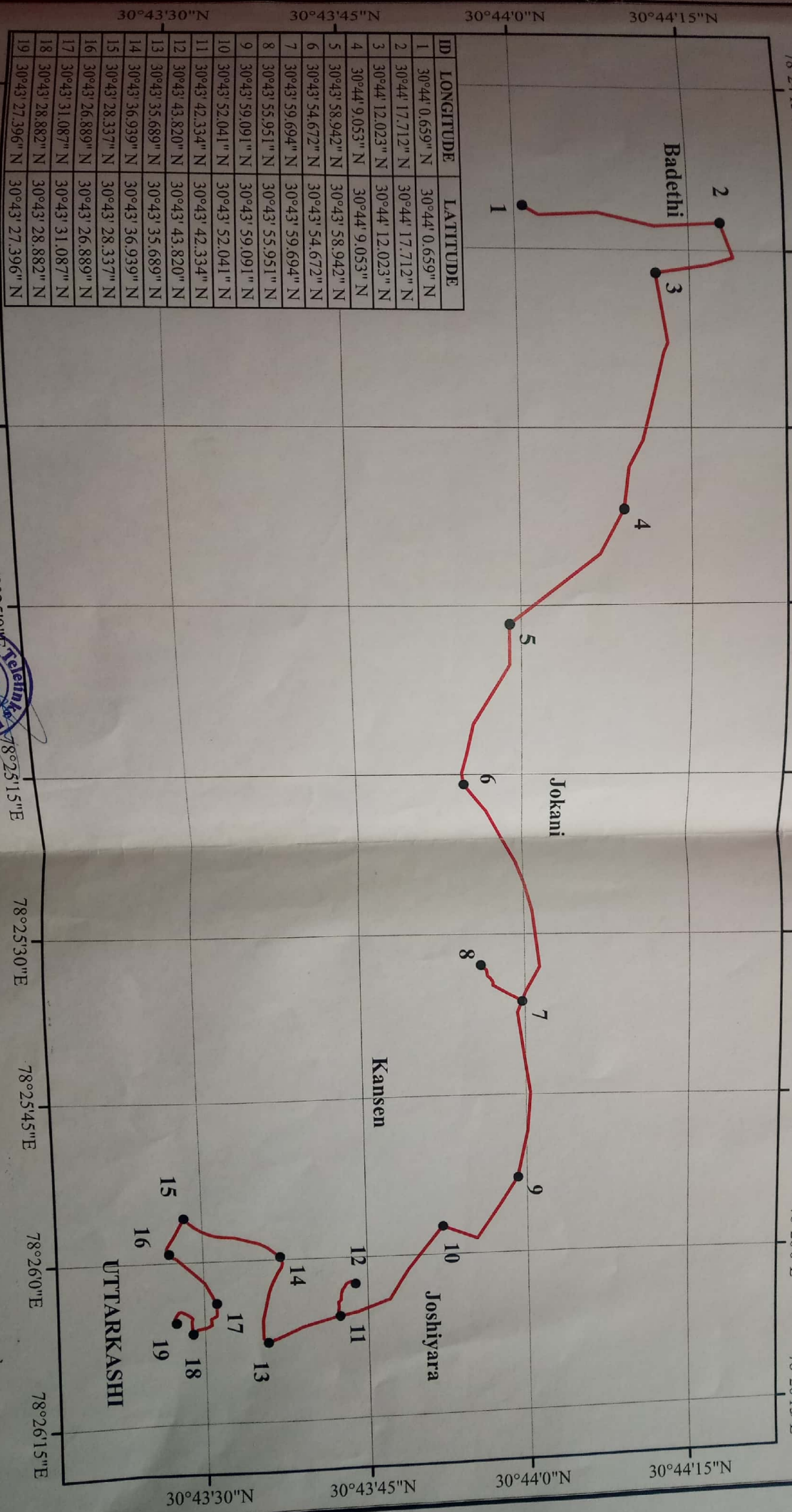
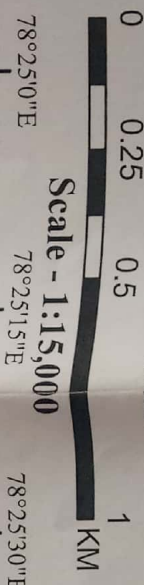


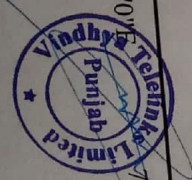
Geo-reference Map of Proposed Route from Badethi to Joshiyara-Uttarkashi in Uttarkashi District for Infrastructure Development Project (IP1) for Digitalization of Rural & Urban Areas in Uttarakhand in Fwift Communication



ID	LONGITUDE	LATITUDE
1	30°44' 0.659" N	30°44' 0.659" N
2	30°44' 17.712" N	30°44' 17.712" N
3	30°44' 12.023" N	30°44' 12.023" N
4	30°44' 9.053" N	30°44' 9.053" N
5	30°43' 58.942" N	30°43' 58.942" N
6	30°43' 54.672" N	30°43' 54.672" N
7	30°43' 59.694" N	30°43' 59.694" N
8	30°43' 55.951" N	30°43' 55.951" N
9	30°43' 59.091" N	30°43' 59.091" N
10	30°43' 52.041" N	30°43' 52.041" N
11	30°43' 42.334" N	30°43' 42.334" N
12	30°43' 43.820" N	30°43' 43.820" N
13	30°43' 35.689" N	30°43' 35.689" N
14	30°43' 36.939" N	30°43' 36.939" N
15	30°43' 28.337" N	30°43' 28.337" N
16	30°43' 26.889" N	30°43' 26.889" N
17	30°43' 31.087" N	30°43' 31.087" N
18	30°43' 28.882" N	30°43' 28.882" N
19	30°43' 27.396" N	30°43' 27.396" N

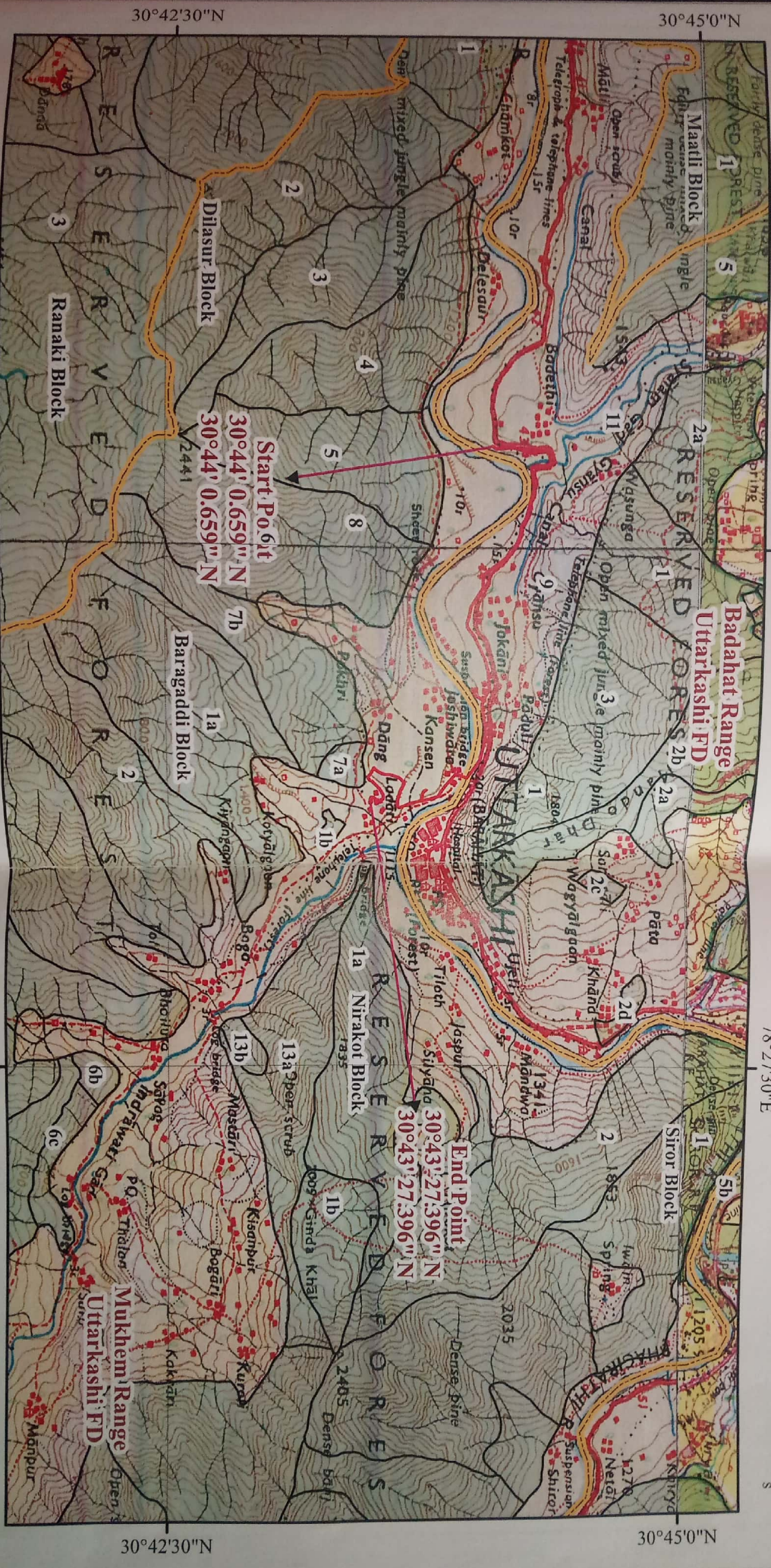
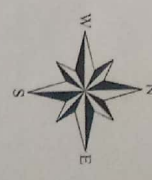
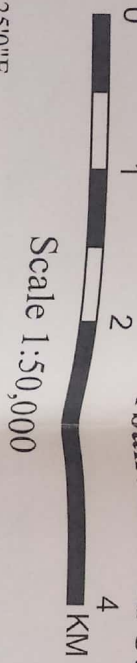
Legend

GPS Points



Handwritten signatures and dates: 6.xii.17, 06/12/17

Geo-reference Map of Proposed Route from Badethi to Joshivara-Uttarkashi in Uttarkashi District for Infrastructure Development Project (IP1) for Digitalization of Rural & Urban Areas in Uttarakhand in Fwiff Communication



- Legend**
- Proposed Route
 - Reserve Forest Area
 - Reserve Forest Boundary
 - Forest Range Boundary
 - Forest Division Boundary



78°27'30"E

78°27'30"E

30°42'30"N

30°45'0"N

6-11-17

Handwritten signature and date.