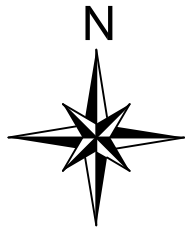
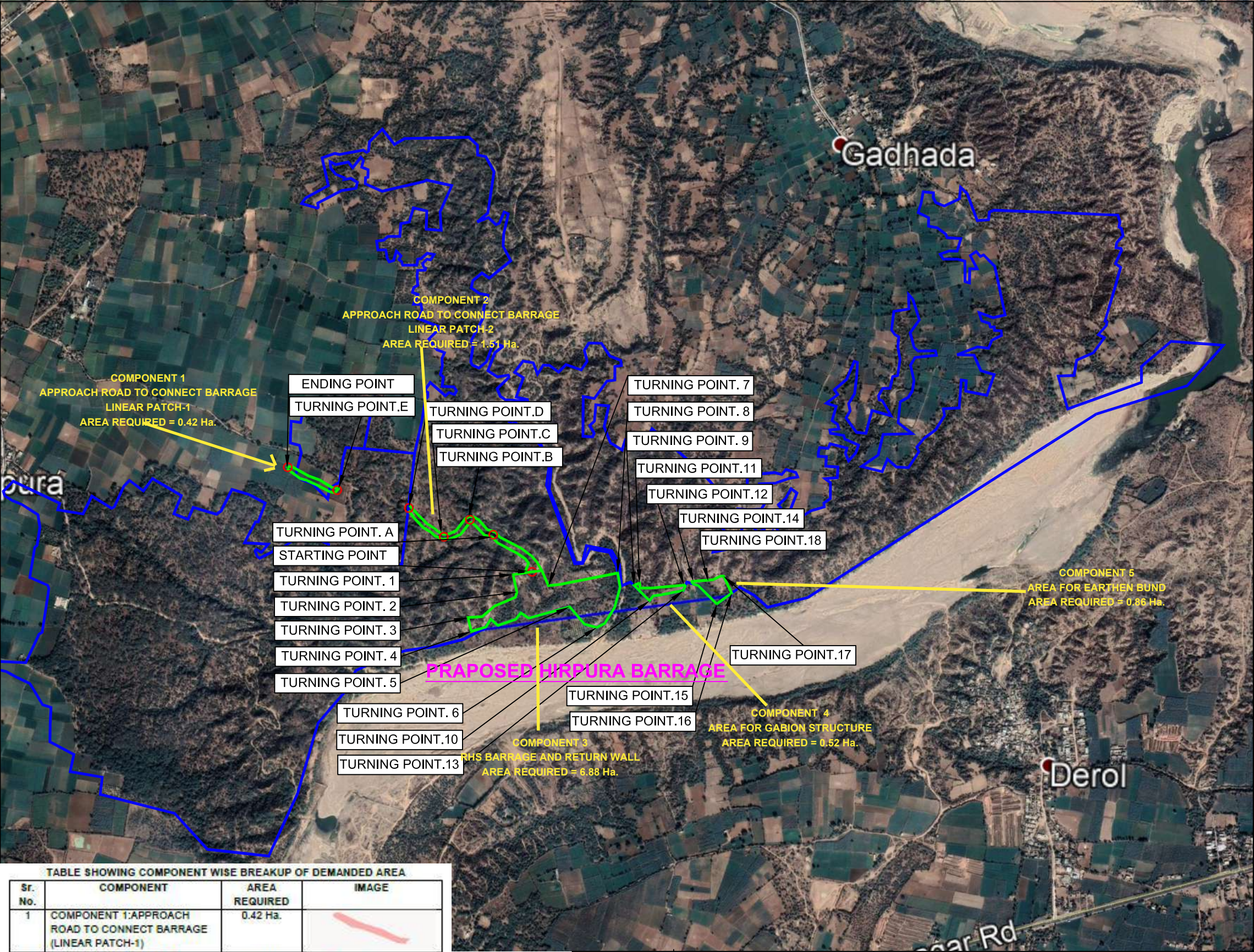


DGPS MAP

Name of Project: Diversion of 10.19 ha. R.F. Land for construction of Barrage and approach road on Sabarmati River in Village: Hirpura, Ta. Vijapur, Dist. Mehsana.



Sr.No.	Description	Lat	Long
1	Starting Point	23°35'45.11"N	72°48'57.82"E
2	Turning Point.A	23°35'49.88"N	72°48'52.45"E
3	Turning Point.B	23°35'51.85"N	72°48'49.56"E
4	Turning Point.C	23°35'49.65"N	72°48'45.57"E
5	Turning Point.D	23°35'53.36"N	72°48'41.31"E
6	Turning Point.E	23°35'55.70"N	72°48'31.82"E
7	Ending Point	23°35'58.77"N	72°48'25.64"E
8	Turning Point.1	23°35'44.90"N	72°48'56.58"E
9	Turning Point.2	23°35'42.03"N	72°48'55.50"E
10	Turning Point.3	23°35'38.91"N	72°48'49.14"E
11	Turning Point.4	23°35'37.10"N	72°48'49.66"E
12	Turning Point.5	23°35'40.59"N	72°49'2.37"E
13	Turning Point.6	23°35'37.69"N	72°49'6.01"E
14	Turning Point.7	23°35'43.22"N	72°48'59.72"E
15	Turning Point.8	23°35'44.91"N	72°49'8.75"E
16	Turning Point.9	23°35'43.22"N	72°49'10.97"E
17	Turning Point.10	23°35'41.20"N	72°49'12.83"E
18	Turning Point.11	23°35'42.90"N	72°49'11.82"E
19	Turning Point.12	23°35'43.28"N	72°49'17.70"E
20	Turning Point.13	23°35'42.53"N	72°49'17.43"E
21	Turning Point.14	23°35'43.78"N	72°49'18.61"E
22	Turning Point.15	23°35'40.70"N	72°49'21.76"E
23	Turning Point.16	23°35'42.26"N	72°49'23.78"E
24	Turning Point.17	23°35'44.49"N	72°49'22.72"E
25	Turning Point.18	23°35'43.98"N	72°49'21.39"E

NAME OF WORK : DIVERSION OF 10.19 Ha.RESERVE FOREST LAND FOR NON-FOREST PURPOSE FOR CONSTRUCTION OF PROPOSED HIRPURA BARRAGE ON SABARMATI RIVER AND APPROACHED ROAD FOR (SURVEY NO.1029) HIRPURA BARRAGE OF DHAROI CANAL DIVISION NO.3 AT VILLAGE HIRPURA, TALUKA-VIJAPUR, DISTRICT:MEHSANA

TABLE SHOWING COMPONENT WISE BREAKUP OF DEMANDED AREA			
Sr. No.	COMPONENT	AREA REQUIRED	IMAGE
1	COMPONENT 1:APPROACH ROAD TO CONNECT BARRAGE (LINEAR PATCH-1)	0.42 Ha.	
2	COMPONENT 2 : APPROACH ROAD TO CONNECT BARRAGE (LINEAR PATCH-2)	1.51 Ha.	
3	COMPONENT 3: RHS BARRAGE AND RETURN WALL	6.88 Ha.	
4	COMPONENT 4 : AREA FOR GABIONSTRUCTURE	0.52 Ha.	
5	COMPONENT 5 : AREA FOR EARTHEN BUND	0.86 Ha.	

LEGEND	DESCRIPTION	SR.NO	RESERVED FOREST LAND	HECTARE
	RESERVE FOREST	1.	PROPOSED HIRPURA BARRAGE AREA	8.26 Ha.
	FOREST LINE	2.	APPROACHED ROAD AREA	1.93 Ha.
	TURNING POINT	3.	TOTAL REQUIRED AREA	10.19 Ha.

DRAWN BY :	PROJ. NO.:	SIZE:A3
CHECKED BY :	DRG. NO. :	
DATE :	SCALE :	