



नियत के लिए नहीं NOT FOR EXPORT

OPEN SERIES  
MAP

No. G43S12

Scale 1:50,000

G43S7 (45D/7)	G43S11 (45D/11)	G43S15 (45D/15)
G43S8 (45D/8)	G43S12 (45D/12)	G43S16 (45D/16)
Pālan GUJARAT F43A5 (46A/5)	Sābar Kānha GUJARAT F43A9 (46A/9)	Sābar Kānha GUJARAT F43A13 (46A/13)

भारतीय सर्वेक्षण विभाग

SURVEY OF INDIA

1st Edition 2011.

Price : Rs. 70/-

#### CONVENTIONAL SYMBOLS

Express highway, with toll, with bridge, with distance stone	20
Roads, metalled, according to importance	7.5
Roads, double cartway, according to importance	10
Unmetalled road, Cart-track, Pack-track with pass, Foot-path	10
Streams, with track in bed, undefined, Canal	10
Dams, masonry or rock-filled, earthenwork, Weir	10
River, dry with water channel, with island & rocks, Tidal river	10
Submerged rocks, Shoal, Swamp, Reeds	10
Wells, lined, unlined, Tube-well, Spring, Tanks, perennial, dry	10
Embankments, road or rail, bank, broken ground	10
Railways, broad gauge, double, single with station, under construction	10
Railways, other gauges, double, single with distance stone, do	10
Mineral line or tramway, Kib, Cutting with tunnel	10
Contours with sub-features, Rocky slopes, Cliffs	10
Sand features (flat, (Z)and-hills(permanent), (D)unes(shifting)	10
Towns or Villages, inhabited, deserted, Fort	10
Huts, permanent, temporary, Tower, Antiquities	10
Temple, Chhat, Church, Mosque, Idgah, Tomb, Graves	10
Lighthouse, Lighthouse, Buoys, lighted, unlighted, Anchorage	10
Mine, Vine on trellis, Grass, Scrub	10
Palms, palms, other, Plantain, Conifer, Other trees	10
Areas, cultivated, wooded, Surveyed tree	10
Boundary, international	10
district, subdivision, taluk or taluk, forest	10
Boundary pillars, surveyed, unlocated	10
Heights, triangulated, station, point, approximate	10
Bench-mark, geodetic, tertiary, canal	10
Post office, Overhead tank	10
Rest house or inspection bungalow, Circuit house, Police station	10
Camping ground, Forest, reserved, protected	10
Spaced names administrative, locality or tribal	10
Hospital, Dispensary, Veterinary Hospital / Dispensary	10
Aerodrome, Helipad, Tourist site	10
Power line, with pylons surveyed, with poles unsurveyed	10

#### REFERENCE

Dep Depression

#### NOTES

Heights are in metres and above Indian mean sea level.  
Contours are approximate.  
A relative height,  $\Delta$ , represents the approximate height, in metres, between the top and bottom of a steep slope.  
The triangulated heights and contours in this sheet have not been adjusted to the heights of the spirit-levelled bench-marks and not be strictly in accordance with them, but the discrepancy is unlikely to exceed 2 metres.  
Tanks, shown dry, in this area usually contain water from July to October.  
A relative height,  $\Delta$ , against a well, in blue, indicates its total depth in metres.  
In sand areas, cultivation is periodic and dependent on rainfall.

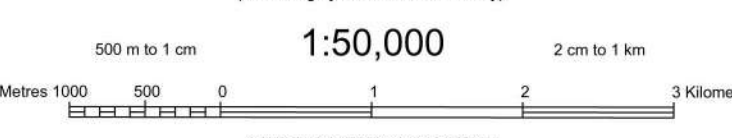
#### COMPILATION INDEX

A	Surveyed during 1959-60. Updated for major details during 2005-06.
---	--

Projection - UTM Datum - WGS 84

Magnetic Variation from True North about 0 in 2005.  
(Increasing by about 1° East annually).

1:50,000



CONTOUR INTERVAL 20 METRES

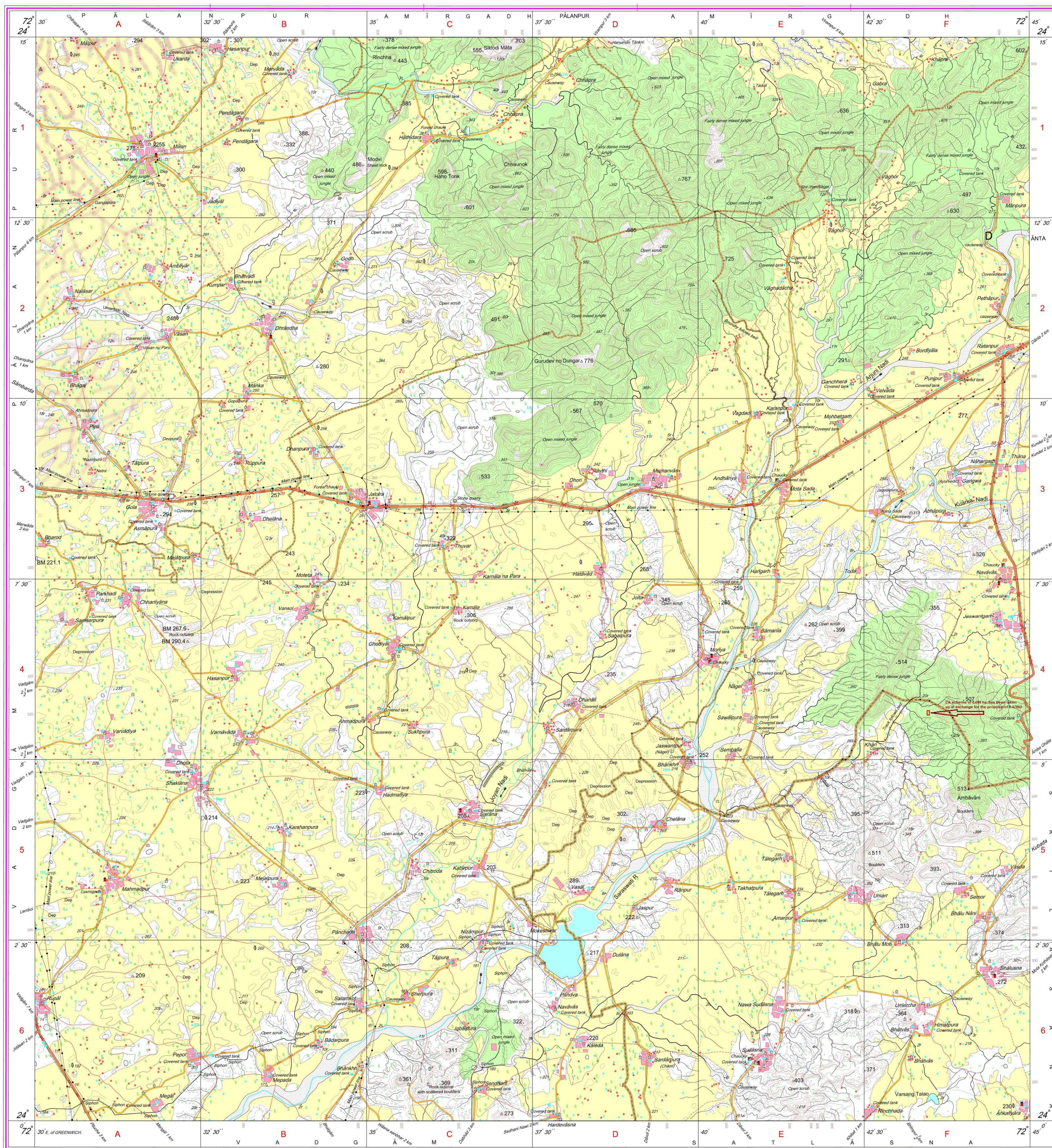
For further details about this map, please contact

Director  
Gujarat, Damán & Diu Geo-Spatial Data Centre  
Survey of India, Sector 10(A)  
Gandhinagar.

WEBSITE - [www.surveyofindia.gov.in](http://www.surveyofindia.gov.in)

Reproduction in whole or part by any means is prohibited  
without the written permission of Survey of India, the  
National Mapping Agency.

GOVERNMENT OF INDIA COPYRIGHT, 2011.



REG. No. - SPG D11 (GSD DDC-1:50,000).

भारत के महानदीय, सर्वेक्षण विभाग, दिल्ली, के निर्देश में प्रकाशित,  
Published under the direction of Swarna Subba Rao, B.E., Surveyor General of India,  
Survey of India, Haidibarkala Estate, Post Box No. 37, Dehra Dun-248001 (Uttarakhand)  
Department of Science & Technology, Government of India.

PRINTED AT THE SOUTHERN PRINTING GROUP OF SURVEY OF INDIA.