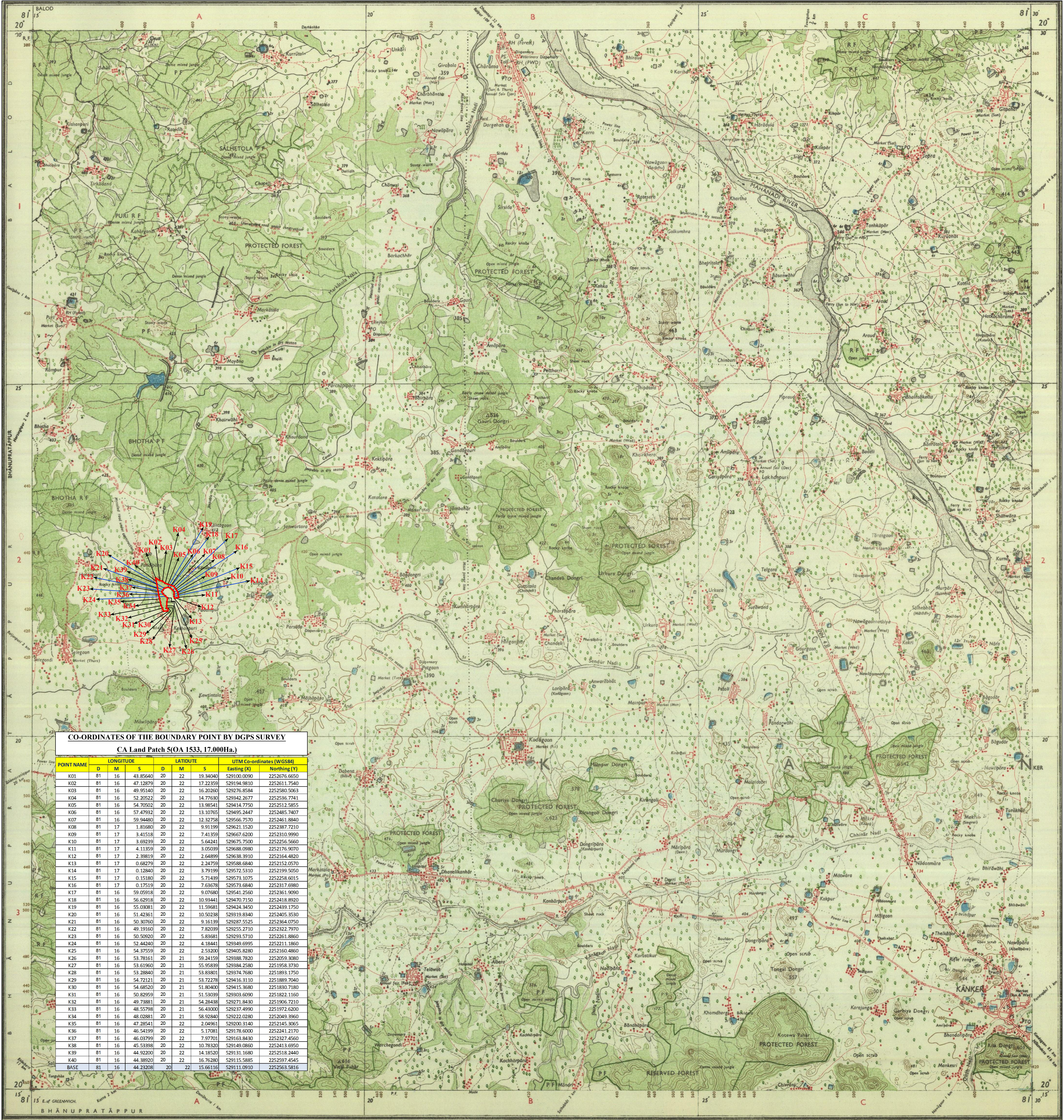


SUPERIMPOSED DGPS SURVEYED CA LAND AREA PATCH NO.-5 (OA-1533) ON TOPOSHEET MAP (Map No.- 64H/7)  
FOR FOREST LAND DIVERSION PROPOSAL OF GOVERNMENT MEDICAL COLLEGE BUILDING OF HEALTH DEPARTMENT  
LOCATION AT VILLAGE- KISHANPURI, TEHSIL-NARHARPUR, DIST. -KANKER (C.G.)

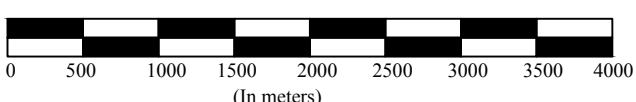


CO-ORDINATES OF THE BOUNDARY POINT BY DGPS SURVEY

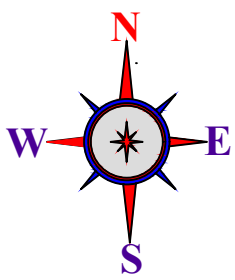
CA Land Patch 5 (OA 1533, 17.00Ha.)

POINT NAME	LONGITUDE			LATITUDE			UTM Co-ordinates (WGS84)	
	D	M	S	D	M	S	Easting (X)	Northing (Y)
K01	81	16	43.85640	20	22	19.34040	529100.0090	2252676.6650
K02	81	16	47.12879	20	22	17.22359	529194.9810	2252611.7540
K03	81	16	48.55140	20	22	16.30260	529276.8504	2252580.5263
K04	81	16	52.20522	20	22	14.77630	529342.2577	2252336.7741
K05	81	16	54.70502	20	22	13.98541	529414.7750	2252512.5855
K06	81	16	57.47932	20	22	13.10765	529495.2447	2252485.7407
K07	81	16	59.94480	20	22	12.32758	529566.7570	2252461.8840
K08	81	17	1.81680	20	22	9.91199	529621.1520	2252387.7210
K09	81	17	3.41518	20	22	7.41359	529667.6200	2252310.9990
K10	81	17	3.69239	20	22	5.64241	529675.7500	2252256.5660
K11	81	17	4.11559	20	22	3.05039	529688.0980	2252176.9070
K12	81	17	2.39819	20	22	2.64899	529638.3910	2252164.4820
K13	81	17	0.68279	20	22	2.24759	529588.6840	2252152.0570
K14	81	17	0.12840	20	22	3.79199	529572.5310	2252199.5050
K15	81	17	0.15180	20	22	5.71439	529573.1075	2252258.6015
K16	81	17	0.17519	20	22	7.63678	529573.6840	2252317.6980
K17	81	16	59.05918	20	22	9.07680	529541.2560	2252361.9090
K18	81	16	56.62918	20	22	10.93441	529470.7150	2252418.8920
K19	81	16	55.03081	20	22	11.59681	529424.3450	2252439.1750
K20	81	16	51.42361	20	22	10.50238	529319.8340	2252405.3530
K21	81	16	50.30760	20	22	9.16139	529297.5525	2252364.0750
K22	81	16	49.19160	20	22	7.82039	529255.2710	2252322.7970
K23	81	16	50.50920	20	22	5.83681	529293.5710	2252261.8860
K24	81	16	52.44240	20	22	4.18441	529349.6995	2252211.1860
K25	81	16	54.37559	20	22	2.53200	529405.8280	2252160.4860
K26	81	16	53.78161	20	21	59.24159	529388.7820	2252059.3080
K27	81	16	53.61960	20	21	55.95839	529384.2580	2251958.3730
K28	81	16	53.28840	20	21	53.83801	529374.7680	2251893.1750
K29	81	16	54.72121	20	21	53.72278	529416.3110	2251889.7040
K30	81	16	54.08520	20	21	51.80400	529415.3690	2251830.7180
K31	81	16	50.82959	20	21	51.53039	529303.6090	2251822.1160
K32	81	16	49.73881	20	21	54.28438	529271.8430	2251906.7210
K33	81	16	48.55798	20	21	56.43000	529237.4990	2251972.6200
K34	81	16	48.02881	20	21	58.92840	529222.0280	2252049.3960
K35	81	16	47.28541	20	22	2.04961	529200.3140	2252145.3065
K36	81	16	46.54199	20	22	5.17081	529178.6000	2252241.2170
K37	81	16	46.03799	20	22	7.97701	529163.8430	2252327.4560
K38	81	16	45.53598	20	22	10.78320	529149.0860	2252413.0950
K39	81	16	44.52320	20	22	14.18520	529131.1690	2252518.2440
K40	81	16	44.38920	20	22	16.76280	529115.5885	2252597.4545
BASE	81	16	44.23208	20	22	15.66116	529111.0910	2252563.5816

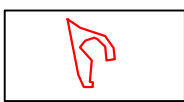
SCALE 1:50000



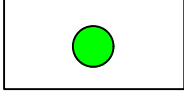
Date of Survey - 18/01/2020 - 20/01/2020



INDEX



DGPS SURVEYED AREA



DGPS SURVEYED BOUNDARY POINT



BOUNDARY POINT NUMBER

SUPERIMPOSED DGPS SURVEYED CA LAND AREA PATCH NO.-5 (OA-1533) ON TOPOSHEET MAP (Map No.- 64H/7)  
FOR FOREST LAND DIVERSION PROPOSAL OF GOVERNMENT MEDICAL COLLEGE BUILDING OF HEALTH DEPARTMENT

DETAIL OF DGPS SURVEYED AREA  
VILLAGE - KISHANPURI  
TEHSIL - NARHARPUR, DISTRICT - KANKER (C.G.)  
CA LAND SURVEYED AREA - 17.00 Ha.

SURVEYED BY  
[Signature]  
VINOD MARKAM  
[GEOLOGIST]

CHECKED BY  
[Signature]  
ALOK VERMA  
[SR. MANAGER]

CHEIF MEDICAL AND HEALTH OFFICER  
Uttar Bastar, District - Kanker Chhattisgarh

EMANELMENT  
OUR FIRM SIDDHARTH GEO CONSULTANTS AUTHORIZED  
FOR DGPS SURVEY IN CHHATTISGARH UNDER VIDE  
THEIR LETTER NUMBER F7 - 14/2013/12, DATED 10/11/2014

