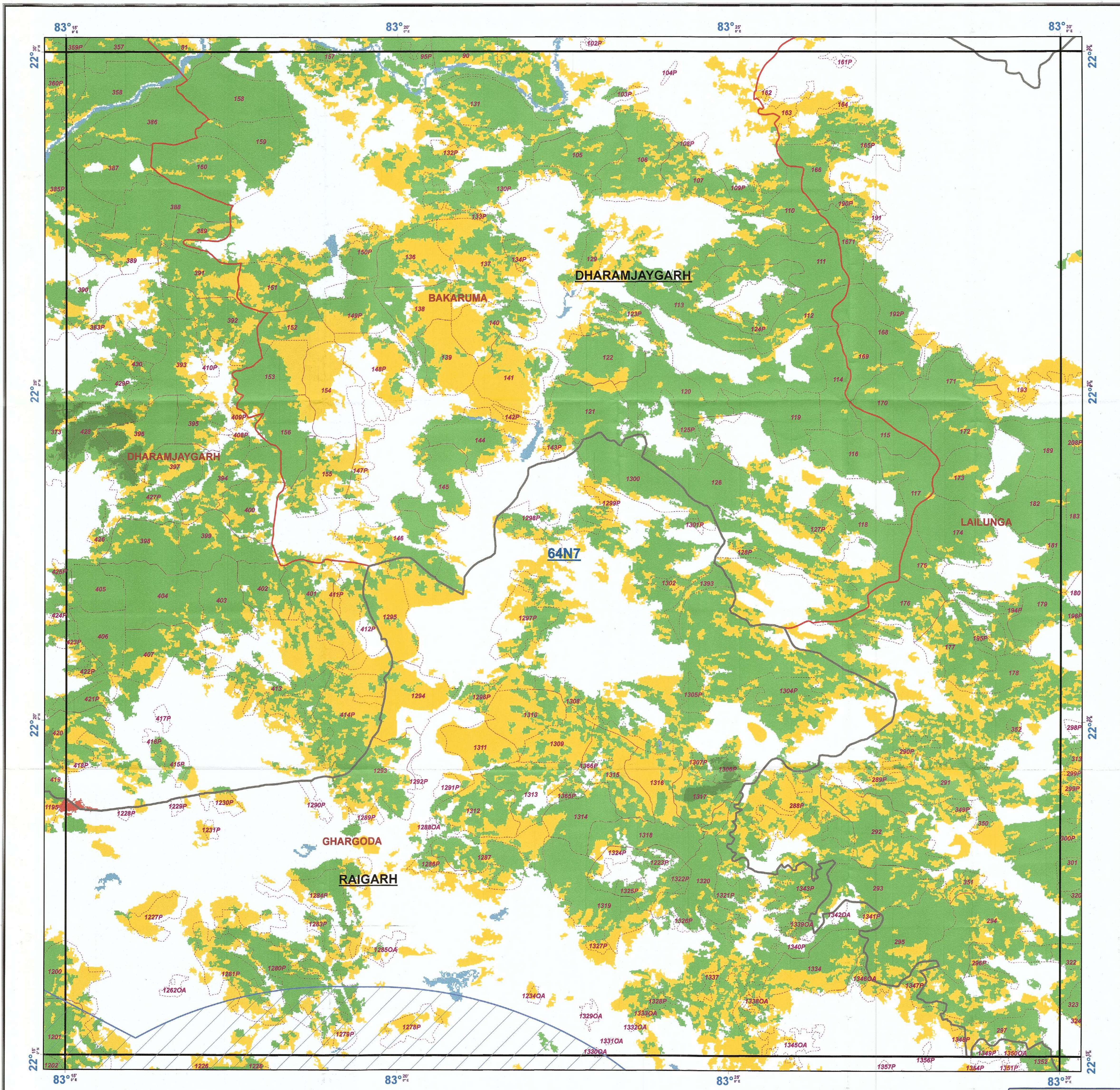


# FOREST COVER MAP

TOPOSHEET NO. 64-N 7

SCALE - 1:50,000



## Legend

- Transmission CenterLine
- 10km Buffer
- Division\_Boundary
- Range\_Boundary
- Compartment\_Boundary

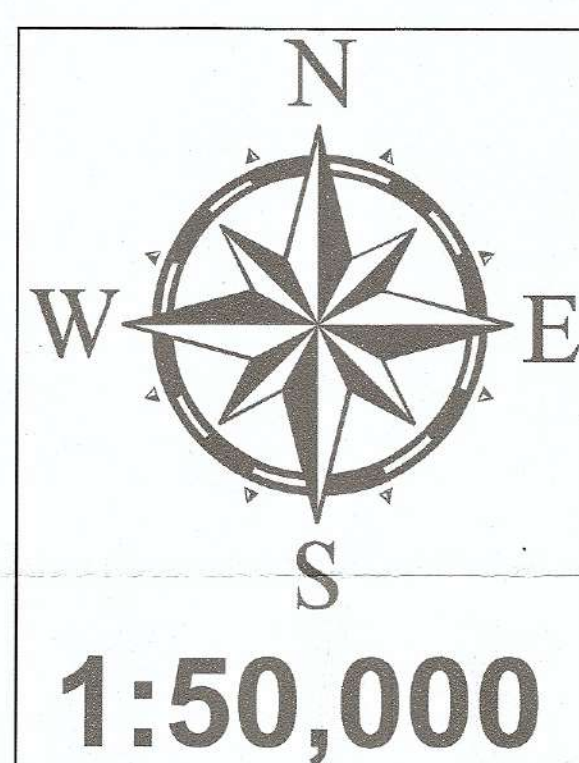
## Vegetation

- Moderately Dense Forest
- Non-Forest
- Open Forest
- Scrub
- Very Dense Forest
- Water

## MAP PREPARED FOR GTTPL, KORBA

### TOPOSHEET INDEX

64N2	64N6	64N10
64N3	64N7	64N11
64N4	64N8	64N12



### IMPORTANT:--

- \* 10km Boundary marked with Transmission Line taken as Center
- \* Forest Cover based on Digital Interpretation of Data Period 2014-15
- IRS P6-LISS-III 23.5 m, IRS-Resourcesat 2 FSI Report 2015.

निर्यात के लिये नहीं  
NOT FOR EXPORT

REG NO:

MAP SUBJECT:

FOREST COVER MAP FOR FOREST LAND AFFECTED BY 765kv  
GOA TAMNAR DOUBLE CIRCUIT TRANSMISSION LINE IN  
RAIGARH DIVISION, IN FAVOR OF GTTPL, KORBA

### SHAPEFILE PROVIDED BY USER AGENCY

SCALE 1:50,000	CoOrdinates/Projection System used :
Prepared by RGC, Bilaspur (C.G.)	COORDINATE SYSTEM OF SHAPEFILE: Projected Coordinate System: WGS_1984_UTM_Zone_44N Projection: Transverse_Mercator Datum: D_WGS_1984 Unit: Degree
Stock Mapping by	FOR AREA CALCULATION: WGS 1984 UTM Zone 44N
Data Source (s) :	1. Forest Boundaries are based on Stock Map (Scale 1: 15000) 2. Natural Features are based on Digital SOI Data (Scale 1: 50000)
Digitally Compiled and Printed at : REGIONAL GEOMATIC CENTER, BILASPUR	

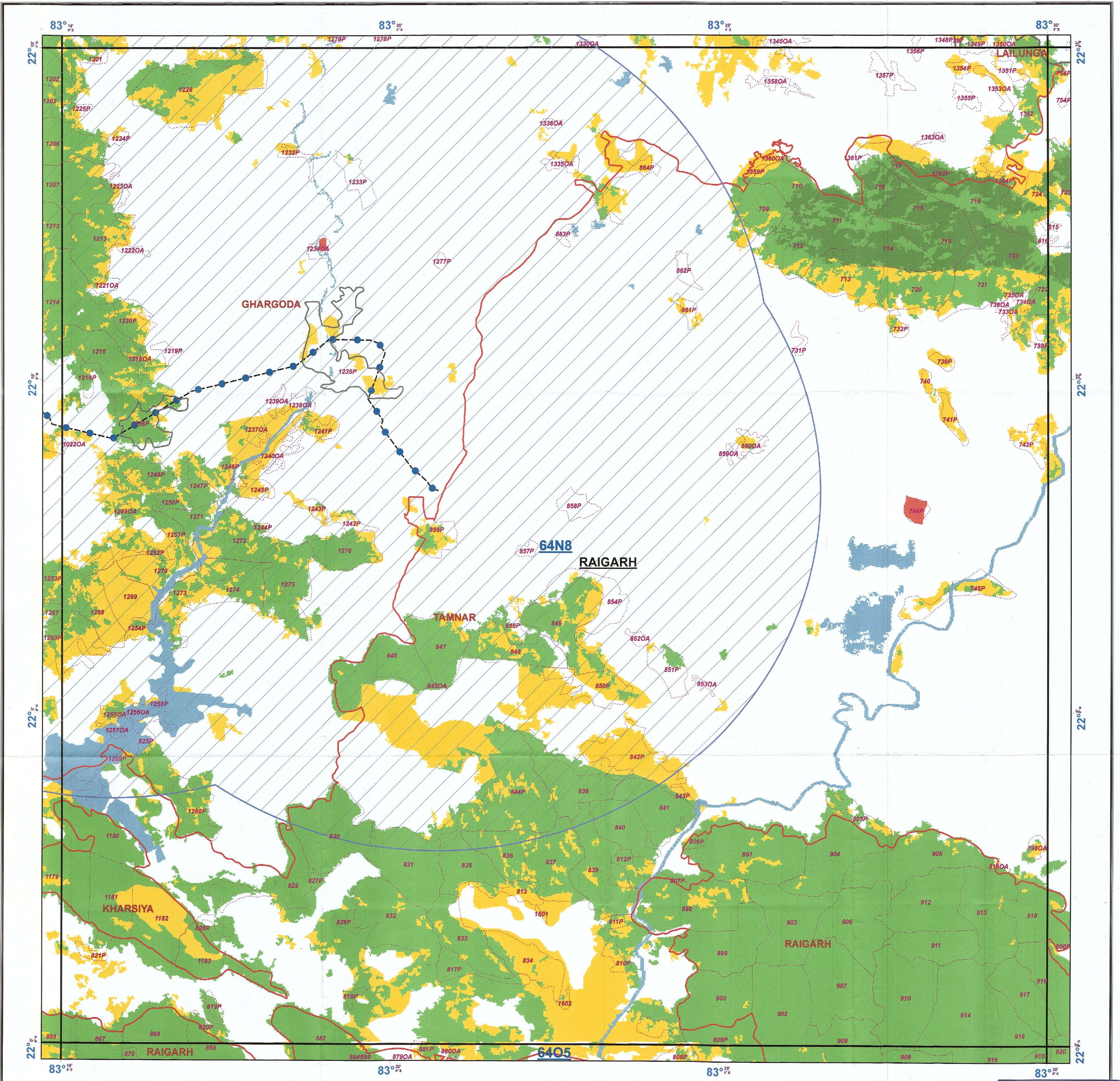
Disclaimer: - The Map provided is subject to inherent discrepancy amongst layers associated with incompatibility between different platforms of reference (L.C.C., W.G.S. 84 etc.) and probable human error angle in digitization. The user agency is advised to use the feature of map subject to prior authentication & supervision by the authorized person of the concerned forest division. The GEOMATIC CENTER BILASPUR shall not be responsible for any complications (legal or otherwise), arising out of this map.



# FOREST COVER MAP

TOPOSHEET NO. 64-N 8

SCALE - 1:50,000



## Legend

- Transmission CenterLine
- 10km Buffer
- Division\_Boundary
- Range\_Boundary
- Compartment\_Boundary

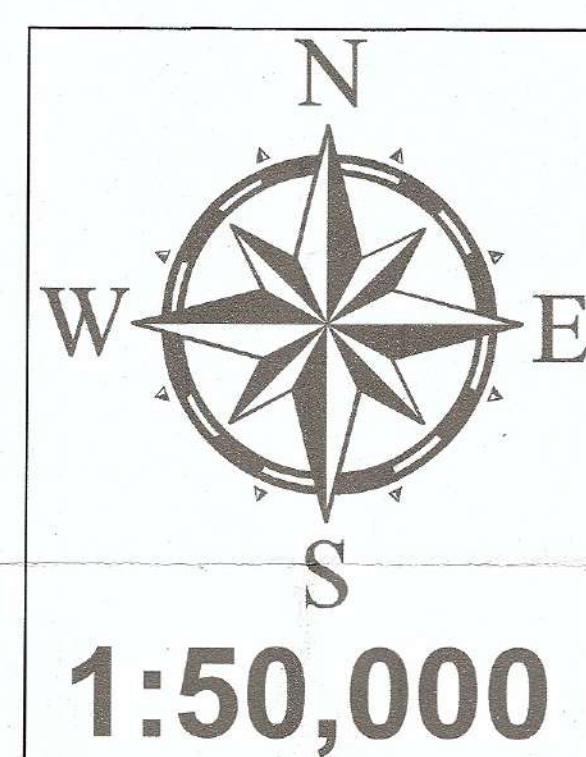
## Vegetation

- Moderately Dense Forest
- Non-Forest
- Open Forest
- Scrub
- Very Dense Forest
- Water

## MAP PREPARED FOR GTTPL, KORBA

### TOPOSHEET INDEX

64N3	64N7	64N11
64N4	64N8	64N12
64O1	64O5	64O9



### IMPORTANT:--

- \* 10km Boundary marked with Transmission Line taken as Center
- \* Forest Cover based on Digital Interpretation of Data Period 2014-15
- IRS P6-LISS-III 23.5 m, IRS-Resourcesat 2 FSI Report 2015. □

निर्यात के लिये नहीं  
NOT FOR EXPORT

REG NO:

MAP SUBJECT:

FOREST COVER MAP FOR FOREST LAND AFFECTED BY 765kv  
GOA TAMNAR DOUBLE CIRCUIT TRANSMISSION LINE IN  
RAIGARH DIVISION, IN FAVOR OF GTTPL, KORBA

## SHAPEFILE PROVIDED BY USER AGENCY

SCALE 1:50,000

Prepared by

CoOrdinates/Projection System used :

Stock Mapping by

COORDINATE SYSTEM OF SHAPEFILE:  
Projected Coordinate System: WGS\_1984\_UTM\_Zone\_44N  
Projection: Transverse\_Mercator  
Datum: D\_WGS\_1984  
Unit: Degree

Data Source (s) :

- 1. Forest Boundaries are based on Stock Map (Scale 1: 15000)
- 2. Natural Features are based on Digital SOI Data (Scale 1: 50000)

Digitally Compiled and Printed at : REGIONAL GEOMATIC CENTER, BILASPUR

Disclaimer: - The Map provided is subject to inherent discrepancy amongst layers associated with incompatibility between different platforms of reference (L.C.C., W.G.S. 84 etc.) and probable human error angle in digitization. The user agency is advised to use the feature of map subject to prior authentication & supervision by the authorized person of the concerned forest division. The GEOMATIC CENTER BILASPUR shall not be responsible for any complications (legal or otherwise), arising out of this map.