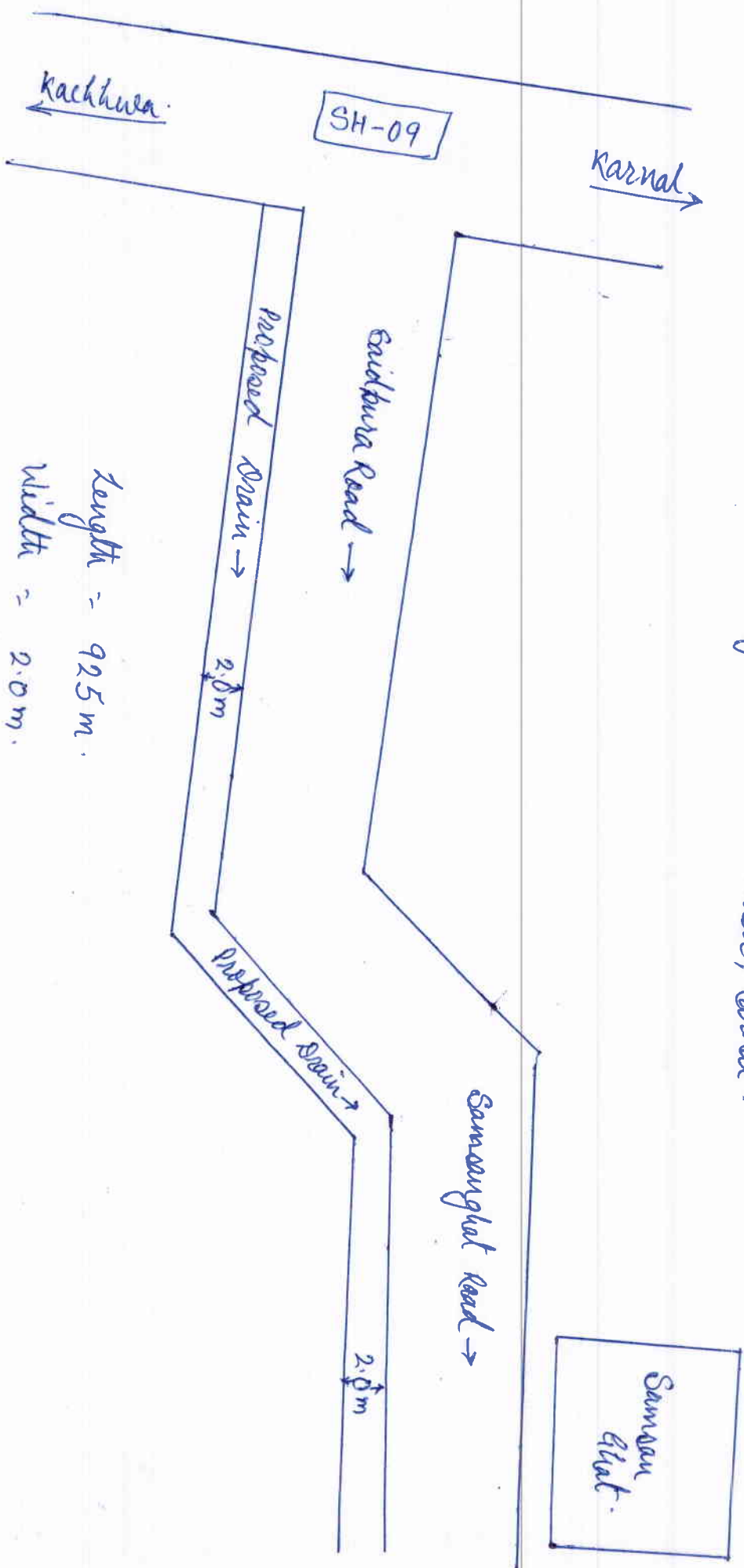


(1) Area Calculation map for diversion of 0.185 hect feed land for construction of Steam water. R/c box type drain from Kachhwa road to Saman that Saidpura village. R/S along main road Saidpura village. Detail & Riott, Karnal.



Length = 925m.

Width = 2.0m.

Area Calculation = $925m \times 2.0m$

$\approx 1850 \text{ sqm.}$

SUNIL BHALLA

Assistant Engineer-II

0.185 Hec.

Pardeep Kumar
Junior Engineer-II

Executive Engineer
Municipal Corporation Karnal