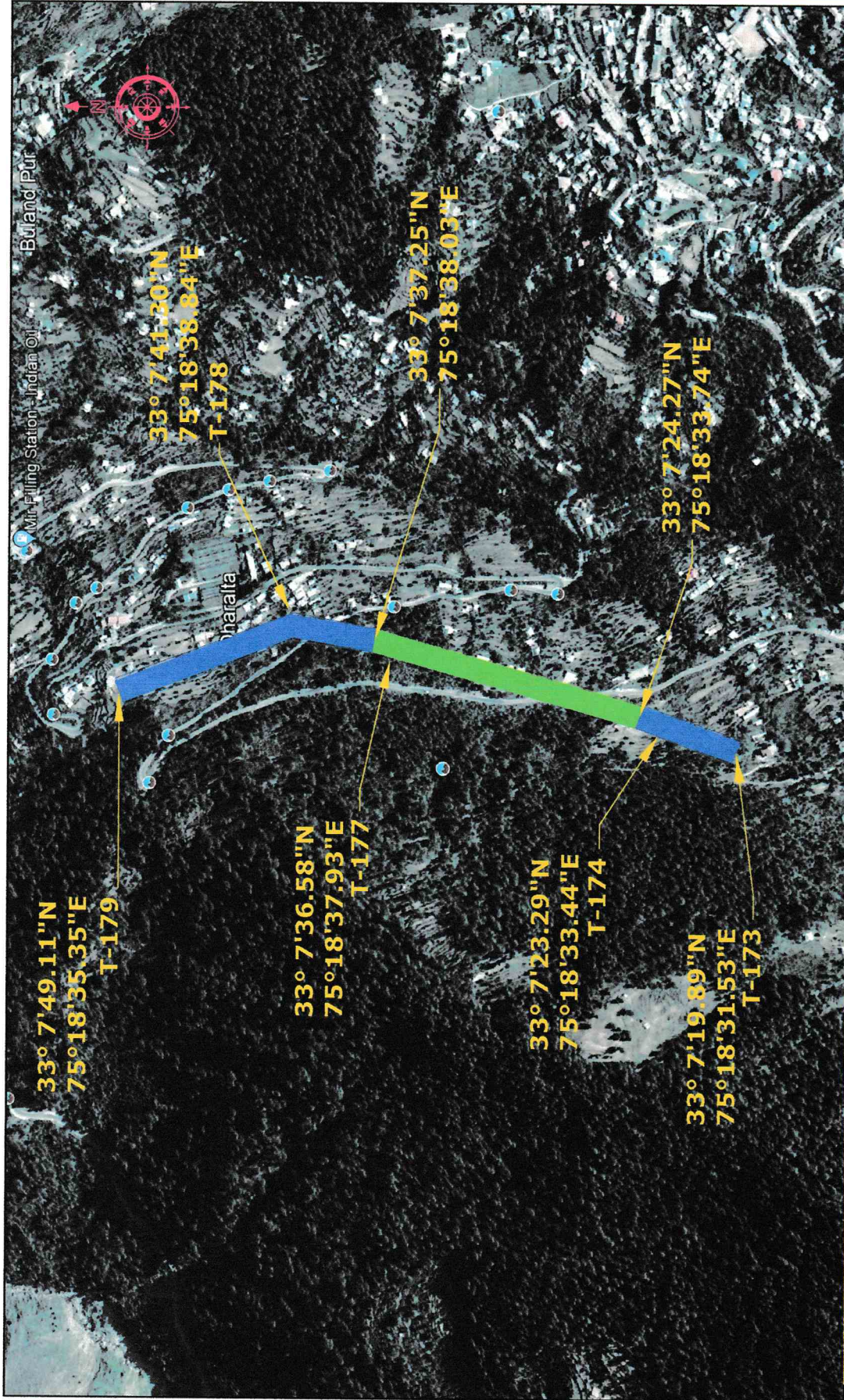


GPS MAP FOR REALIGNMENT OF 220 KV KPTL LINE KP 175, KP 176 NEAR BAGGU NALLAH BATOTE UNDER TLMD DIVISION - III UDHAMPUR



LEGEND:-

1. FOREST LAND	█
2. PRIVATE LAND	█

Assistant Executive Engineer
Transmission Line Maintenance
Sub-Div No 1

(Signature)
Executive Engineer,
Trans. Line Maint. Division-III

ENGINEERED DRAFTING BY:- AUTOCADD SOLUTION CENTRE
OFFICE No. 2 (1st Floor), PANAMA CHOWK, RAIL HEAD, JAMMU-180012, Mob. +91-9595652062