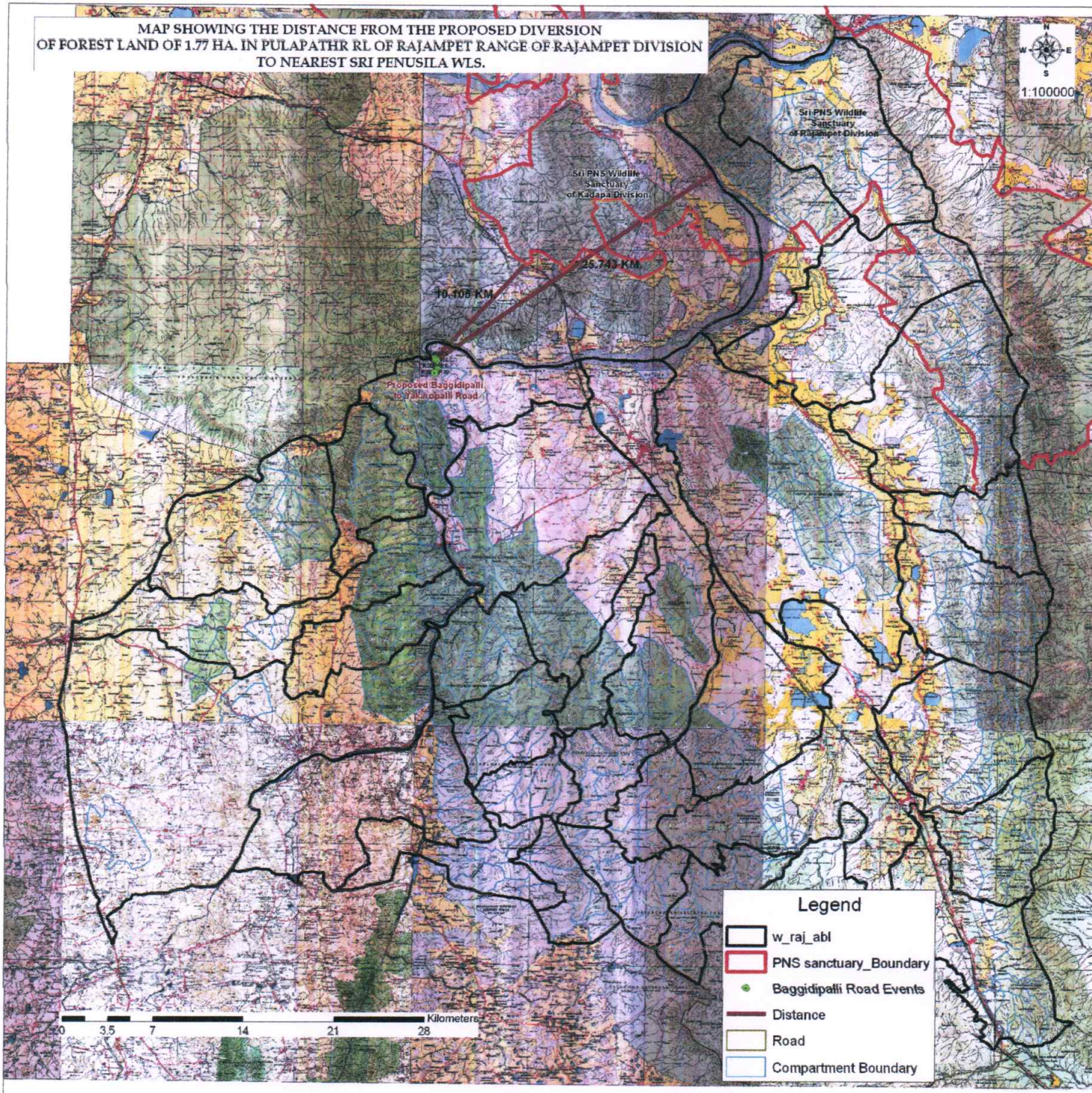


MAP SHOWING THE DISTANCE FROM THE PROPOSED DIVERSION
OF FOREST LAND OF 1.77 HA. IN PULAPATHR RL OF RAJAMPET RANGE OF RAJAMPET DIVISION
TO NEAREST SRI PENUSILA WLS.



[Signature]
Divisional Forest Officer,
Wild Life Division,
RAJAMPET