

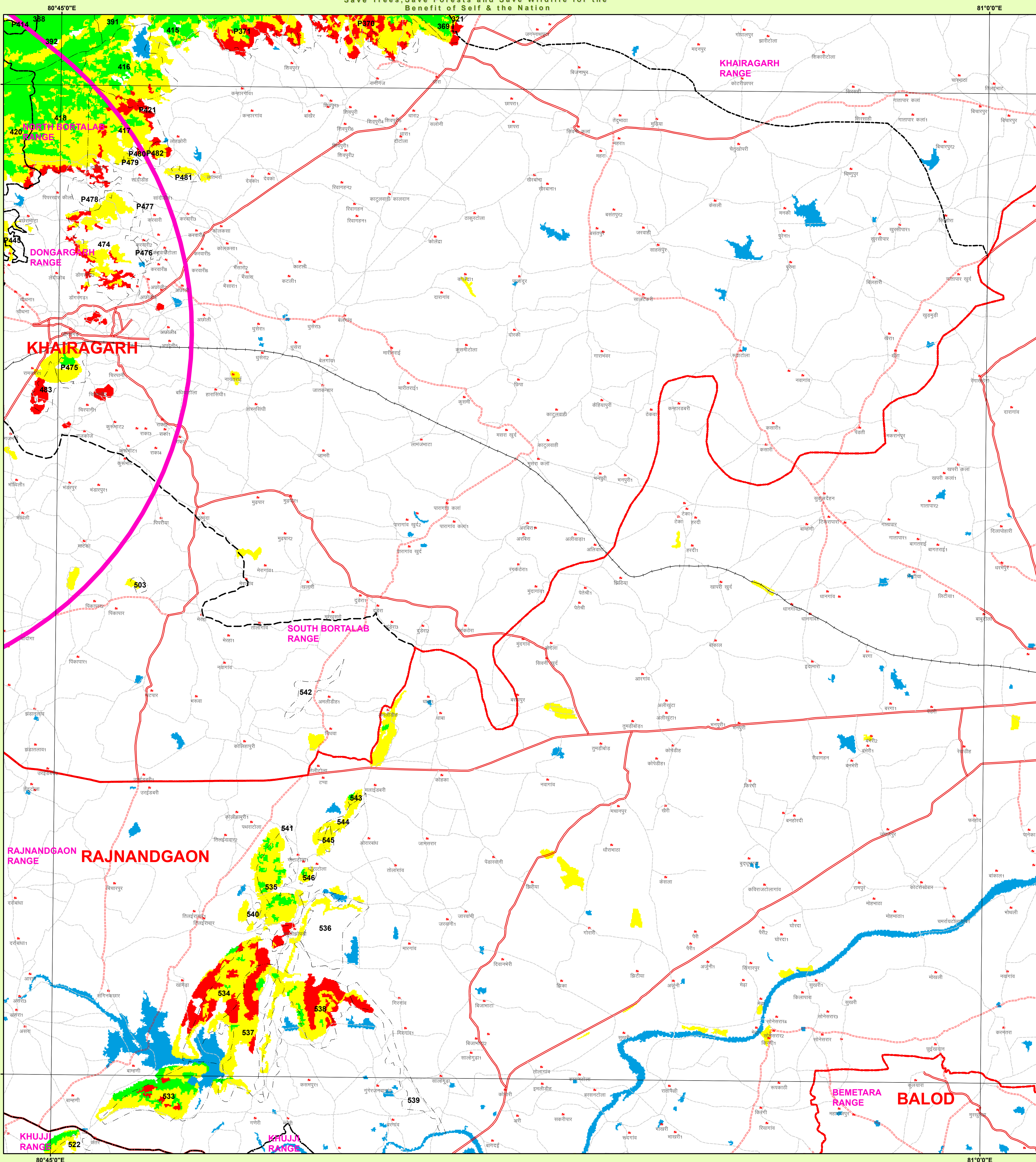
Chhattisgarh Forest Department

Forest Cover Map

Sheet. No. 64 C 16

Save Trees, Save Forests and Save Wildlife for the
Benefit of Self & the Nation

TOPOSHEET NO. 64 C 16



LEGEND

- CENTRE_LINE
- TOWN / VILLAGE
- Railway Line
- ROAD_TYPE
 - Cart Track
 - Metalled Road
 - UnMetalled Road
- Division Boundary
- Range Boundary
- Compartment Boundary
- Procted Area
- SURVEY SITE
- 10_Km_Buffer
- Forest Cover
 - MDF
 - NON FOREST
 - OPEN FOREST
 - SCRUB
 - VDF
 - WATER

1:50,000

0 0.5 1 2 3 4 Km

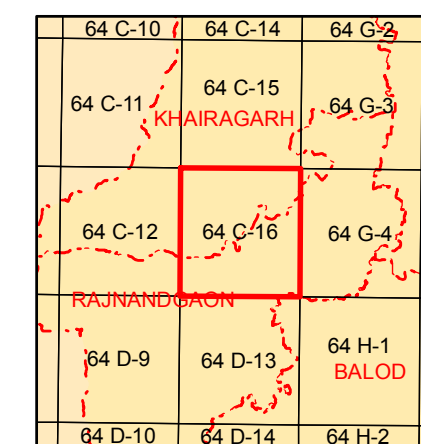
MAP PREPARED FOR:-

Executive Engineer
SECR, Gauri Nagar Railway Crossing,
Rajnandgaon (C.G.)

REG.No. :- FP/CG/RAIL/48681/2020

Diversion of Forest Land for non-forest purpose under Forest Conservation Act, 1980 Proposed for Diversion Land for To contract 3rd Railway Line from Panijob to Bortalao approximate 8 km, it covers Rajnandgaon district to be used for freight and passanger services. Proposed alignment of 3rd line is a detour alignment, area- 20.954 ha. regarding.

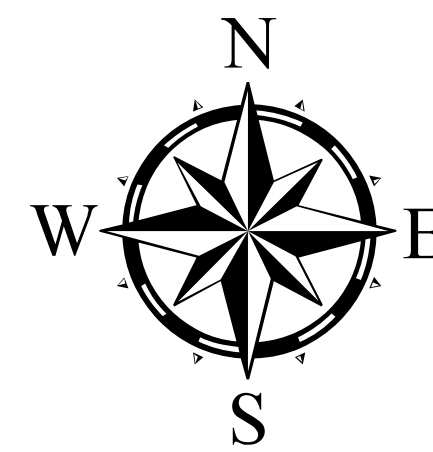
Note :- Shapefile provided by user agencies.



Sheet to Index

Data Source:- 1. Compartment Boundary from Stock Map
2. Forest Cover Based on Digital interpretation of Data Period Oct 2017 to Dec 2017 (ISS-II) from Resourcesat-2 and IRS-P6 (Resourcesat-1) IS1 Report 2019.
3. General Features are based on SDI Digital Data (Scale 1 : 50,000) and Chhattisgarh GeoDatabase.

Source :- FOREST SURVEY OF INDIA FOREST COVER CLASSIFICATION SCHEME.
Very Dense Forest :- All land with tree cover (including Mangrove cover) of canopy density of 70 % and above.
Moderately Dense Forest :- All land with tree cover (including Mangrove Cover) of canopy density between 40% and 70% above.
Open Forest :- All land with tree cover (including Mangrove Cover) of canopy density between 10-40%.
Scrub :- All forest lands with poor tree growth mainly of small or stunted trees having canopy density less than 10%.
Non Forest :- Any Area not included in the above classes.



SCALE 1:50000

TOPOSHEET NO. 64 C 16

NOT FOR EXPORT



Prepared and Printed by:- GIS Cell
Forest Management Information System Division, Raipur