

TOPOSHEET Map SHOWING DIVERSION OF FOREST LAYING OF OFC DUCT & CABLE  
WITHIN ROW OF EXISTING ROW MARDI TO MASHVAD SH-13 TALMAN, DIST-SATARA.



निर्यात के लिए नहीं NOT FOR EXPORT

OPEN SERIES  
MAP

No. E43O10

Scale 1:50,000

E43O5 (47K/5)	E43O9 (47K/9)	E43O13 (47K/13) 2 Solapur MAHARASHTRA
E43O6 (47K/6)	E43O10 (47K/10)	E43O14 (47K/14)
E43O7 (47K/7)	E43O11 (47K/11) Sangli MAHARASHTRA	E43O15 (47K/15)

3 Pune, MAHARASHTRA.

भारतीय सर्वेक्षण विभाग

SURVEY OF INDIA

1st Edition 2011.

Price : Rs. 70/-

CONVENTIONAL SYMBOLS

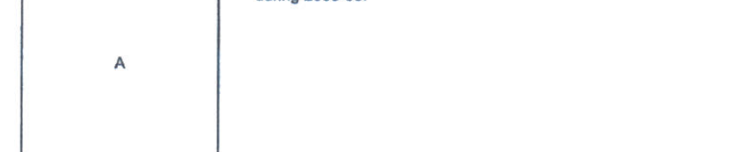
Express highway, with toll, with bridge, with distance stone	...	...
Roads, metalled, according to importance	...	...
Roads, double carriageway, according to importance	...	...
Unmetalled road, Cart-track, Pack-track with pass, Foot-path	...	...
Streams, with track in bed, undrained, Canal	...	...
Dams, masonry or rock-filled, earthwork, Weir	...	...
River, dry with water channel, with island & rocks, Tidal river	...	...
Submerged rocks, Shoal, Swamp, Reeds	...	...
Wells, lined, unlined, Tube-well, Spring, Tanks, perennial, dry	...	...
Embankments, road or rail, tank, Broken ground	...	...
Railways, broad gauge, double, single with station, under constn.	...	...
Railways, other gauges, double, single with distance stone, do.	...	...
Mineral line or tramway, Kin. Cutting with tunnel	...	...
Contours with sub-features, Rocky slopes, Cliffs	...	...
Sand features (1)flat, (2)sand-hill(permanent), (3)dunes(shifting)	...	...
Towns or Villages, inhabited, deserted, Fort	...	...
Habit, permanent, temporary, Tower, Antiquities	...	...
Temple, Chhatra, Church, Mosque, Idgah, Tomb, Graves	...	...
Lighthouse, Lightship, Buoy, lighted, unlighted, Anchorage	...	...
Mine, Vine on trails, Grass, Scrub	...	...
Palms, palm-trees, other, Plantain, Canebrake, Bamboo, Other trees	...	...
Areas, cultivated, wooded, Surveyed tree	...	...
Boundary, international	...	...
state, demarcated, undemarcated	...	...
district, subdivision, tahsil or taluk, forest	...	...
Boundary pillars, surveyed, unlocated	...	...
Heights, triangulated, station, point, approximate	...	...
BM 63.3, BM 63.3	...	...
Post office, Telegraph office, Overhead tank	...	...
Rail house or inspection bungalow, Circular house, Police station	...	...
Camping ground, Forest, reserved, protected	...	...
Spaced names, administrative, locality or tribal	...	...
Hospital, Dispensary, Veterinary, Hospital / Dispensary	...	...
Aerodrome, Heliport, Tourist site	...	...
Power line, with pylons surveyed, with poles unsurveyed	...	...

NOTES :-

Heights are in metres and above Indian mean sea level.  
Contours are approximate.  
A relative height,  $\Delta$  represents the approximate height, in metres, between the top and bottom of a steep slope.  
The triangulated heights and contours in this sheet have not been adjusted to the heights of the spirit-levelled bench-marks and may not be strictly in accordance with them.  
Tanks, shown dry, in this area usually contain water from July to December.  
Unmetalled roads are not shown and can be made passable in dry season.  
Position of pylons between the turning points and power lines has not been surveyed.

COMPILATION INDEX

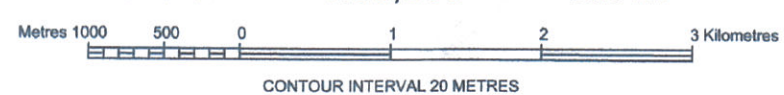
A. Compiled from 1:25,000 Survey 1988-89. Updated for major details during 2005-06.



Projection - UTM Datum - WGS 84

Magnetic Variation from True North about  $1^{\circ} 15'$  West in 2005.  
(Decreasing by about  $1'$  annually.)

1:50,000



CONTOUR INTERVAL 20 METRES

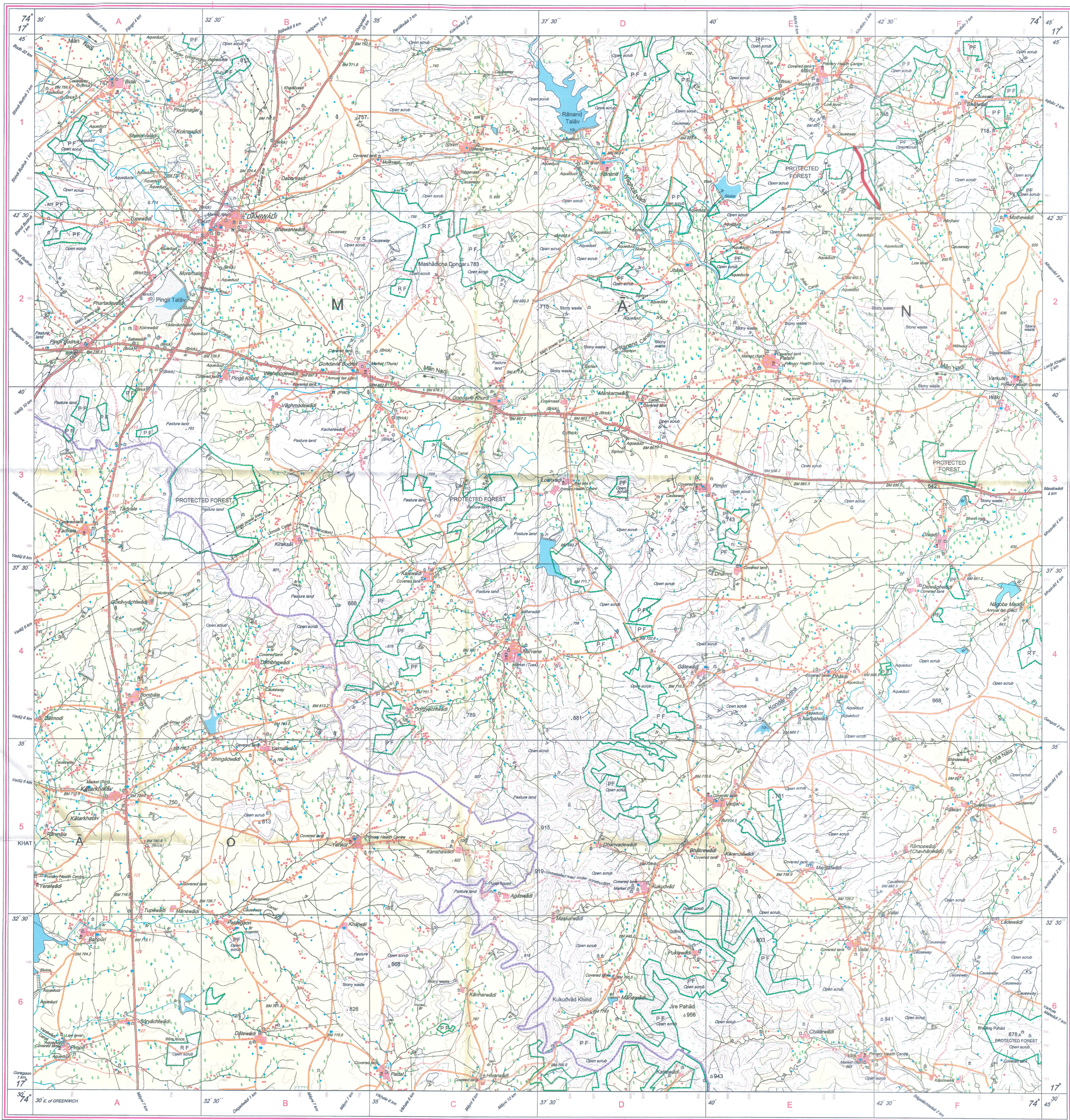
For further details about this map, please contact

Director  
Maharashtra & Goa Geo-Spatial Data Centre  
Survey of India, Prithvi Nagar, Andani Road  
Pune.

WEBSITE - [www.surveyofindia.gov.in](http://www.surveyofindia.gov.in)

Reproduction in whole or part by any means is prohibited  
without the written permission of Survey of India, the  
National Mapping Agency.

© GOVERNMENT OF INDIA COPYRIGHT, 2011.



REG. No. -SPG D11 (Maharashtra & Goa GDS-1:50,000)

आर के भारद्वाज, सर्वेक्षण रा. ३०८, ३०८, के निदेश में प्रकाशित,  
Published under the direction of Swami Subba Rao, B.E. Surveyor General of India,  
Survey of India, Hattibarkala Estate, Post Box No. 37, Dehra Dun - 248001 (Uttarakhand),  
Department of Science & Technology, Government of India.

PRINTED AT THE SOUTHERN PRINTING GROUP OF SURVEY OF INDIA.



(M. N. Mohite)  
Jy. Conservator of Forest  
Satara.

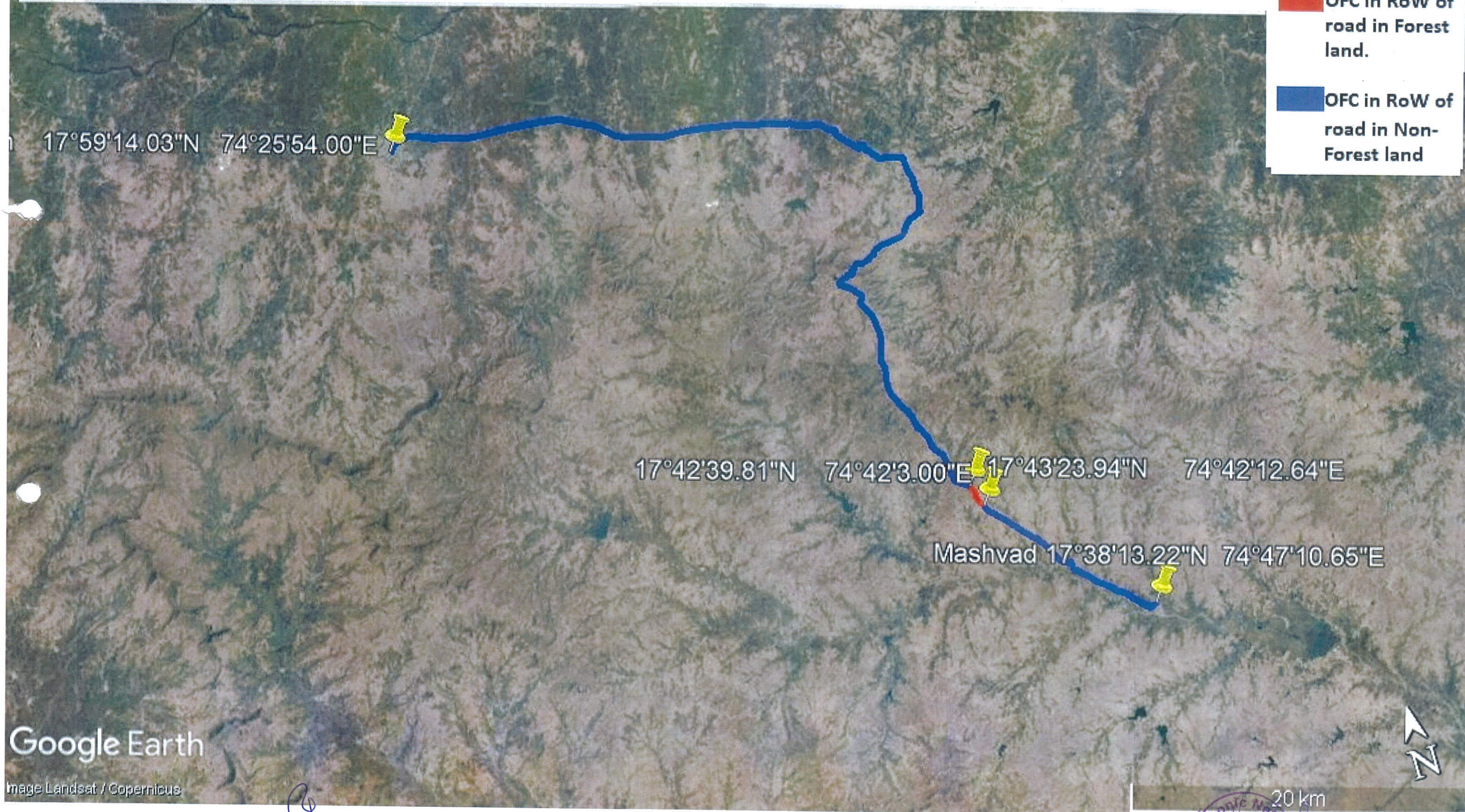
Legend  
OFC Line  
Forest  
961  
Toposheet



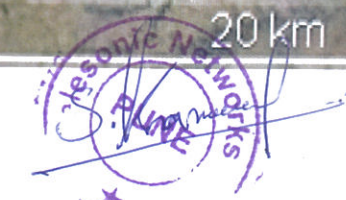
# Geo Reference Map Showing Diversion of Forest Land For Laying of OFC Duct & Cable Within RoW of Existing Road Mardi To Mashvad, Tal- Man, Dist- Satara.

## Legend

- OFC in RoW of road in Forest land.
- OFC in RoW of road in Non-Forest land

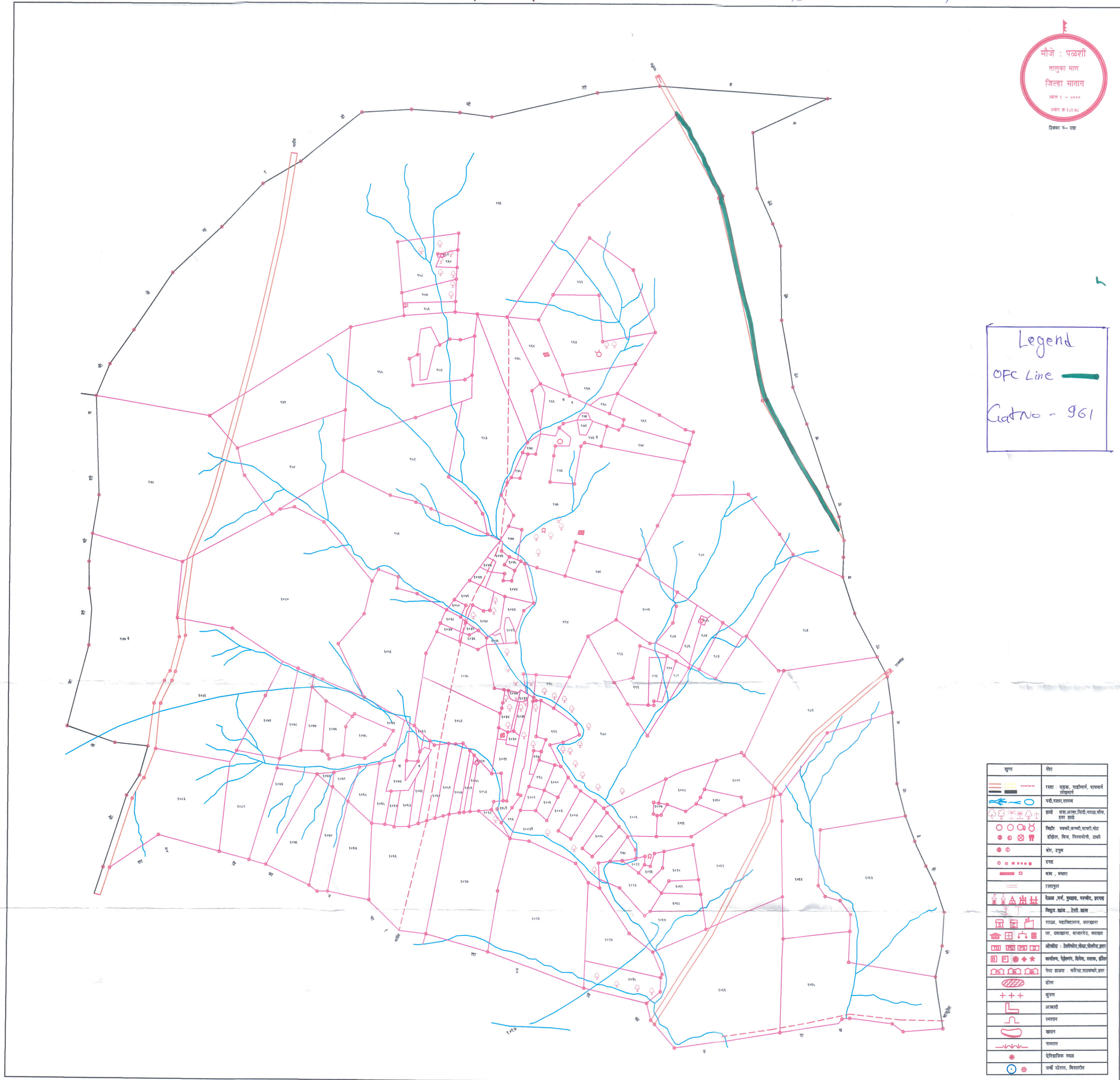


(M. N. Mohite)  
Dy. Conservator of Forest  
Satara





VILLAGE MAP SHOWING DIVERSION OF FOREST LAYING OF OFC DUCT & CABLE  
WITHIN ROW OF EXISTING ROAD MARDI TO MASHHAD SH-13, TAL-MAN, DIST-SATARA







**KEY STATISTICS OF SATARA DISTRICT.**  
(Census 1991)

Area: 10,460 Sq. km. Population: 21,45,000  
Literacy: 54.09%, Density of Population: 203 per sq. km.  
Main language spoken: Marathi



## SATARA MAHARASHTRA



**SURVEY OF INDIA**  
DEPARTMENT OF SCIENCE & TECHNOLOGY

**SATARA DISTRICT**

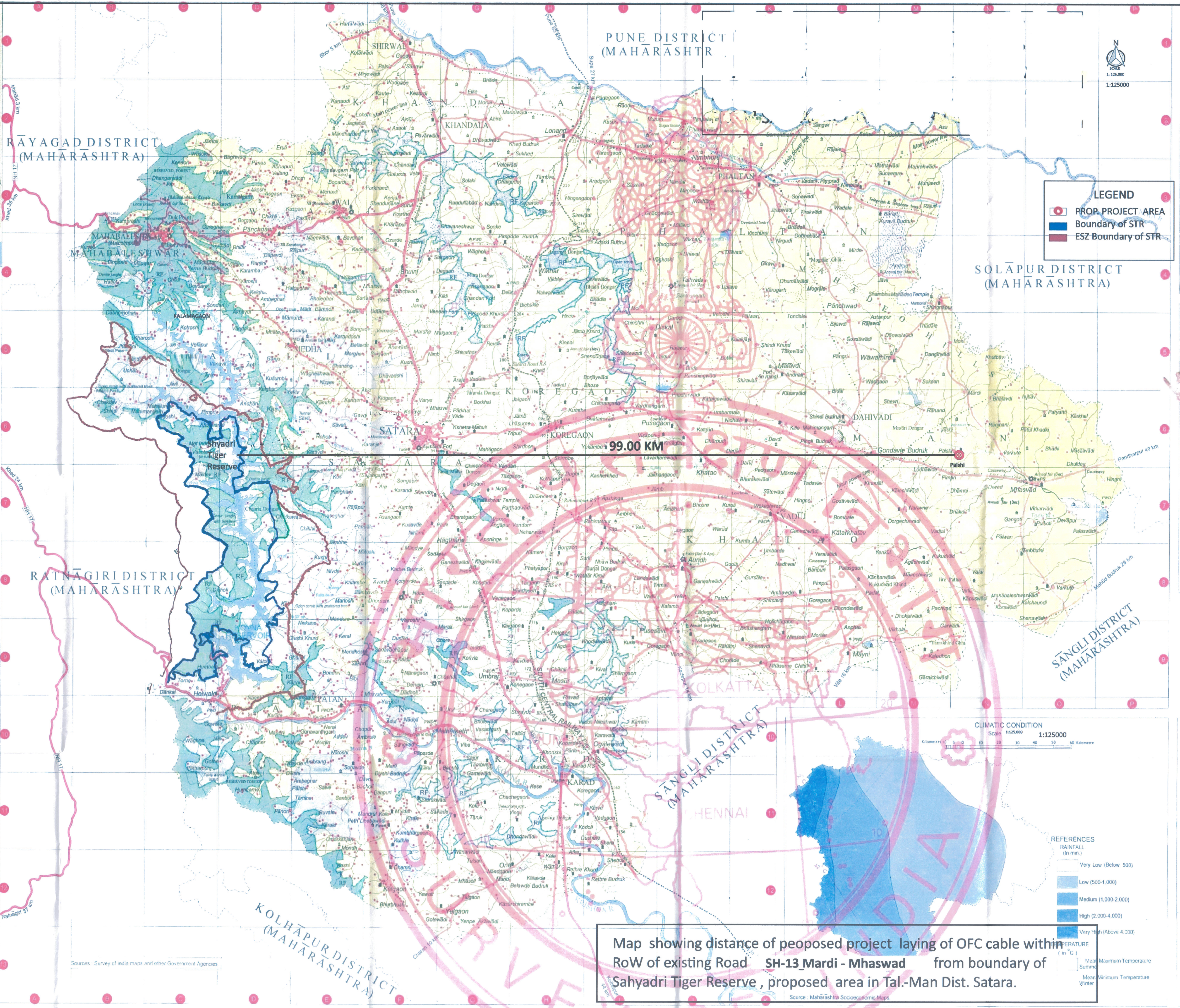
The basic objective of this 'Map Series' is to provide users and planners with topographic and thematic information related to a district.

The oldest known place in SATARA district is probably Karad, styled as Karkhadda in the inscriptions of about 200 B.C. A group of Buddhist caves found at a distance of about five kilometres south-west of Karad, one of which is associated with an inscription dating about the first century after Christ. Caves at Shival and Wai also indicate Buddhist settlements. Wai is locally believed to be Vratnagiri where Pandavas lived in the thirteenth year of their exile. From early times Mahabaleshwar at the source of Krishna is known as a holy place. The earliest mention of SATARA appears to be in the reign of the fourth Bahamani king Muhammad Shah (1358-1375) when with other forts SATARA fort is said to have probably been built. The district and adjoining areas were ruled by various rulers of historical importance. Prominent among them were the Mauryas, the Satvahans, the Chalkyas, the Rashtrakutas, the Vishnukundins, the Silahars, the Yadavas, the Mughals and the Marathas until 1848 and afterwards under the British empire till 1947.

Residual hill ranges and the intermediate valleys, all well developed on a tableland surface form the main geomorphic element of landscape in the SATARA district. In west, it has the Sahayadon scarp with its major peaks, usually flat topped and intervening saddles. The Mahadeo range, which is next major well developed range, begins as an offshoot of the Sahayadon in the north-western part of the district. Eastwards, it runs as a main range and sends off several long spurs south-eastwards and southwards. Four major rivers, the Nira in the entire northern part, the Man in the south-eastern and Yerla and Krishna in the south flow in the area. The narrow belt beyond the Mahadeo hills is drained north by Nira which flows east into the Bhima.

The lands are fertile and irrigated. Jawar, Bajra, Cotton, Groundnut, Rice and Sugarcane are the main crops.

Today SATARA covering an area of 10,460 sq. km. can boast of Engineering Medical Colleges & Hospitals and is in the making of its appearance in the industrial map of the country.



Map showing distance of proposed project laying of OFC cable within RoW of existing Road SH-13 Mardi - Mhaswad from boundary of Sahyadri Tiger Reserve, proposed area in Tal-Man Dist. Satara.

**LEGEND**

- PROJ. PROJECT AREA
- Boundary of STR
- ESZ Boundary of STR

**REFERENCES**

RAINFALL (in mm.)

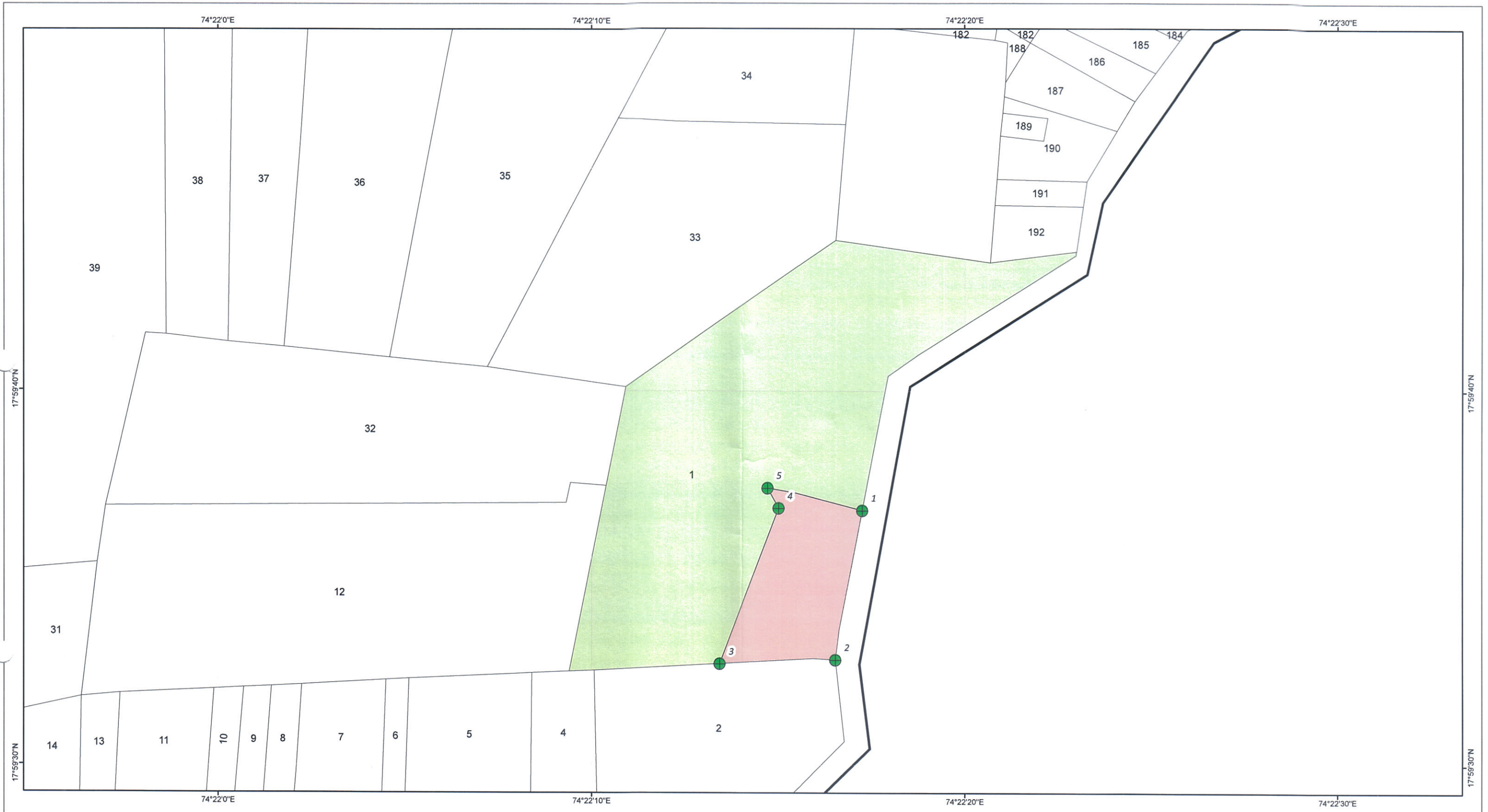
- Very Low (Below 500)
- Low (500-1,000)
- Medium (1,000-2,000)
- High (2,000-4,000)
- Very High (Above 4,000)

TEMPERATURE (in °C)

- Mean Maximum Temperature
- Mean Minimum Temperature
- Winter

**WORKS LTD.**  
**(M. N. Mohite)**  
By, Conservator of Forest  
Satara.





**MAP INDICATING FOREST LAND PROPOSED FOR COMPENSATORY AFFORESTATION AGAINST FOR PROPOSED DIVERSION OF FOREST LAND FOR UNDERGROUND OFC DUCT AND CABLE WITHIN ROW OF EXISTING ROAD SH – 13, ROAD PASSING THROUGH FOREST LAND AT PALASHITAL- MAAN DIST – SATARA PROPOSAL UNDER FOREST (CONSERVATION) ACT 1980**

**DGPS COORDINATES OF OF PROPOSED CA LAND**

POINT_ID	LONGITUDE	LATITUDE
1	74°22'17"	17°59'37"
2	74°22'17"	17°59'33"
3	74°22'13"	17°59'33"
4	74°22'15"	17°59'37"
5	74°22'15"	17°59'37"

**Legend**

- Proposed CA land
- Forest area
- DGPS points
- Sr/Gat No. boundary
- Village boundary

0 0.075 0.15 0.3 Kms

SCALE 1:3000

*(M. N. Mohite)*  
 Dy. Conservator of Forest  
 Satara.







THE DIGITAL IMAGERY OF GOOGLE ILLUSTRATE DIVERSION OF FOREST LAND FOR UNDERGROUND OFC DUCT AND CABLE WITHIN ROW OF EXISTING ROAD SH – 13, ROAD PASSING THROUGH FOREST LAND AT PALASHITAL- MAAN DIST – SATARA PROPOSAL UNDER FOREST (CONSERVATION) ACT 1980


DGPS COORDINATES OF OF PROPOSED CA LAND


POINT_ID	LONGITUDE	LATITUDE
1	74°22'17"	17°59'37"
2	74°22'17"	17°59'33"
3	74°22'13"	17°59'33"
4	74°22'15"	17°59'37"
5	74°22'15"	17°59'37"


Legend

 Proposed CA land

 Forest area

 Sr/Gat No. boundary

 Village boundary



0

0.075

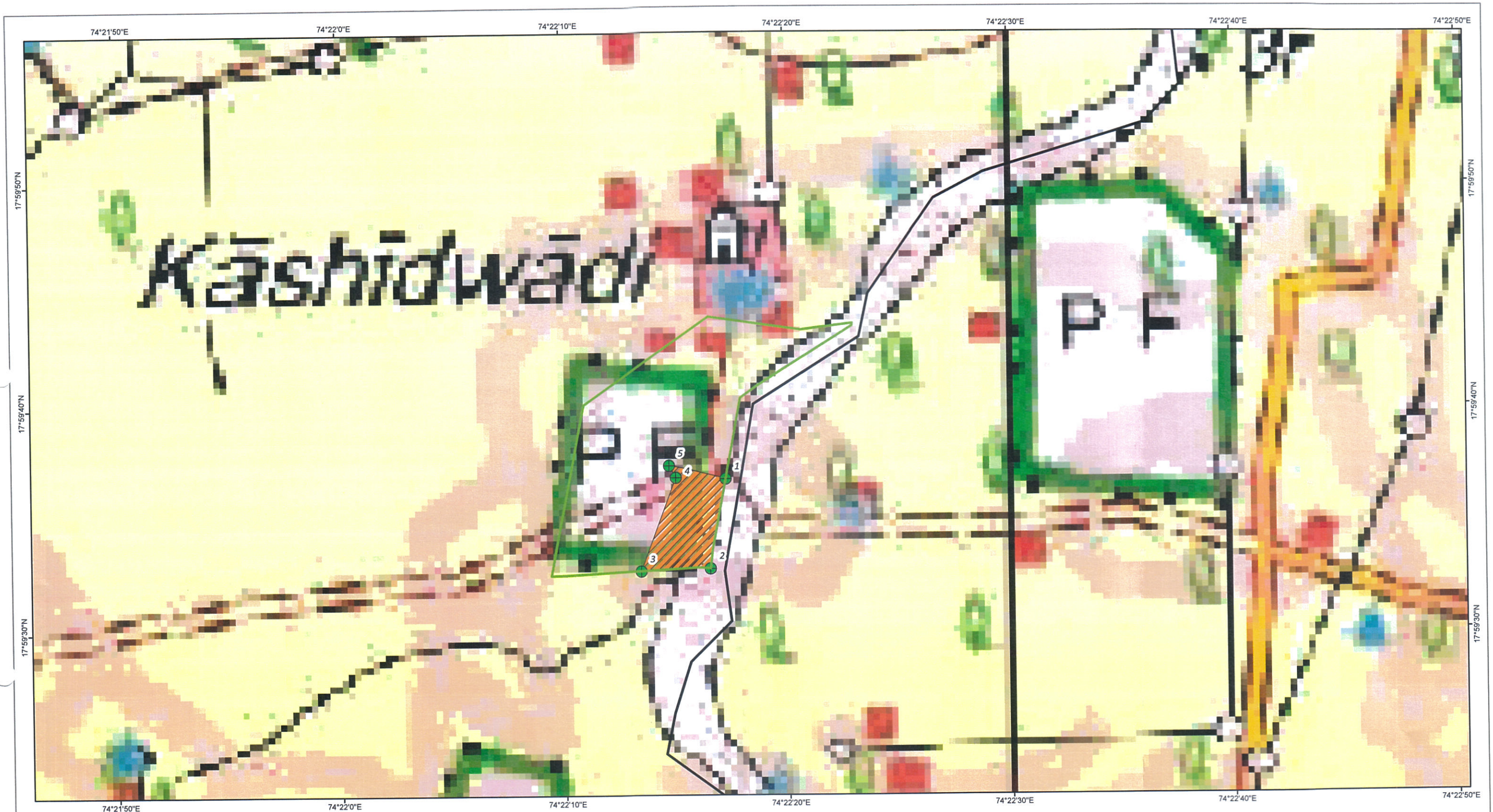
0.15

0.3 Kms

SCALE 1:3000

  
(M. N. Mohite)  
Dy. Conservator of Forest  
Satara.





1:50000 SOI TOPOSHEET INDICATING DIVERSION OF FOREST LAND FOR UNDERGROUND OFC DUCT AND CABLE WITHIN ROW OF EXISTING ROAD SH – 13,  
ROAD PASSING THROUGH FOREST LAND AT PALASHI TAL- MAAN DIST – SATARA PROPOSAL UNDER FOREST (CONSERVATION) ACT 1980

DGPS COORDINATES OF OF PROPOSED CA LAND

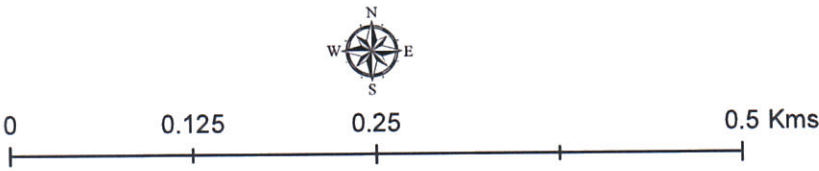
POINT_ID	LONGITUDE	LATITUDE
1	74°22'17"	17°59'37"
2	74°22'17"	17°59'33"
3	74°22'13"	17°59'33"
4	74°22'15"	17°59'37"
5	74°22'15"	17°59'37"

Legend

Proposed CA land

Forest area

DGPS points



*(M. N. Mohite)*  
Dy. Conservator of Forest  
Satara.