



निर्जन के लिए नहीं NOT FOR EXPORT

OPEN SERIES MAP

No. F44E9

Scale 1:50,000

G44W8 (63/L1) Singrauli MADHYA PRADESH	G44W12 (63/L12) Sonbhadra UTTAR PRADESH	G44W16 (63/L16) Sonbhadra UTTAR PRADESH
F44E5 (64/E5)	F44E9 (64/E9)	F44E13 (64/E13)
F44E6 (64/E6)	F44E10 (64/E10)	F44E14 (64/E14)

भारतीय सर्वेक्षण विभाग

SURVEY OF INDIA

1st Edition 2009.

Price : Rs. 50/-

#### CONVENTIONAL SYMBOLS

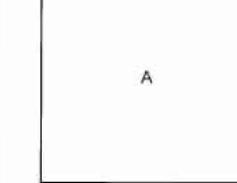
Express highway with toll, with bridge, with distance stone	...
Roads, double carriageway, according to importance	...
Unsurfaced road, Cart track, Pucca track with post, Foot path	...
Streams, with track in bed, underlined, Canal	...
Dense, medium or old forest, water, River, dry with water channel, with sand & rocks, Tidal river	...
Submerged rocks, Shoal, Swamp, Floods	...
Wells, lined, unlined, Tube well, Spring, Tank, perennial, dry	...
Embankment, road or rail, bank, Under ground	...
Railways, broad gauge, double, single with station, under construction	...
Railways, other gauges, double, single with distance stone, do.	...
Mineral line or tramway, Kin, Cutting with tunnel	...
Contours with sub-features, Rocky slopes, Cliff	...
Bound features (Tidal, (Zonal), (Regional), (Global), (Other))	...
Towns or Villages, inhabited, deserted, Fort	...
Hills, permanent, temporary, Tower, Antiquities	...
Temples, Church, Mosque, Ghat, Tomb, Graves	...
Lighthouses, Lighthouse, Bury, lighted, unlighted, Admiration	...
Mine, View on terrain, Grass, Soil	...
Palms, palms, other, Plantain, Conifer, Bamboo, Other trees	...
Areas cultivated, wooded, Surveyed tree	...
Boundary, international	...
state, demarcated, undemarcated	...
district, subdivision, taluk or block, forest	...
Boundary of other surveys, uncoloured	...
Height, trigonometrical station, spot, approximate height, in metres, between the top and bottom of a steep slope	...
The kilometre scale numbers along roads are shown in short type, e.g., '1' indicates milestone, numbers are shown in upright type, e.g., '5'	...
The triangulation height and contour line shown have not been adjusted to the heights of the spot levelled bench - marks and may not be strictly in accordance with them	...
The state boundary between Chhattisgarh and Madhya Pradesh State has been surveyed as posted out by the local officials on the ground but has not been verified by the Governments concerned	...
Post office, Telegraph office, Overhead tank	...
Rail station or inspection, Cattle house, Police station, R	...
Camping ground, Forest, reserved, protected	...
Spaced names, administrative, locality or tribal	...
Hospital, Dispensary, Veterinary, Hospital, Dispensary	...
Aerodrome, Helipad, Tourist site	...
Power line, with pylons surveyed, with pylons unsurveyed	...

#### NOTES :-

Heights are in metres and show Indian mean sea level.  
Contours are approximate.  
A relative height e.g., 10, represents the approximate height, in metres, between the top and bottom of a steep slope.  
The kilometre scale numbers along roads are shown in short type, e.g., '1' indicates milestone, numbers are shown in upright type, e.g., '5'.  
The triangulation height and contour line shown have not been adjusted to the heights of the spot levelled bench - marks and may not be strictly in accordance with them.  
The state boundary between Chhattisgarh and Madhya Pradesh State has been surveyed as posted out by the local officials on the ground but has not been verified by the Governments concerned.

#### COMPILED INDEX

A. Surveyed during 1967-68. Updated for major details during 2004-05.



Projection - UTM Datum - WGS 84

Magnetic Variation from True North about 1° West in 2005.  
(Decreasing by about 1' annually)

1:50,000

Scale 1:50,000  
Metres 1000 500 0 500 1 2 3 Kilometres

CONTOUR INTERVAL 20 METRES

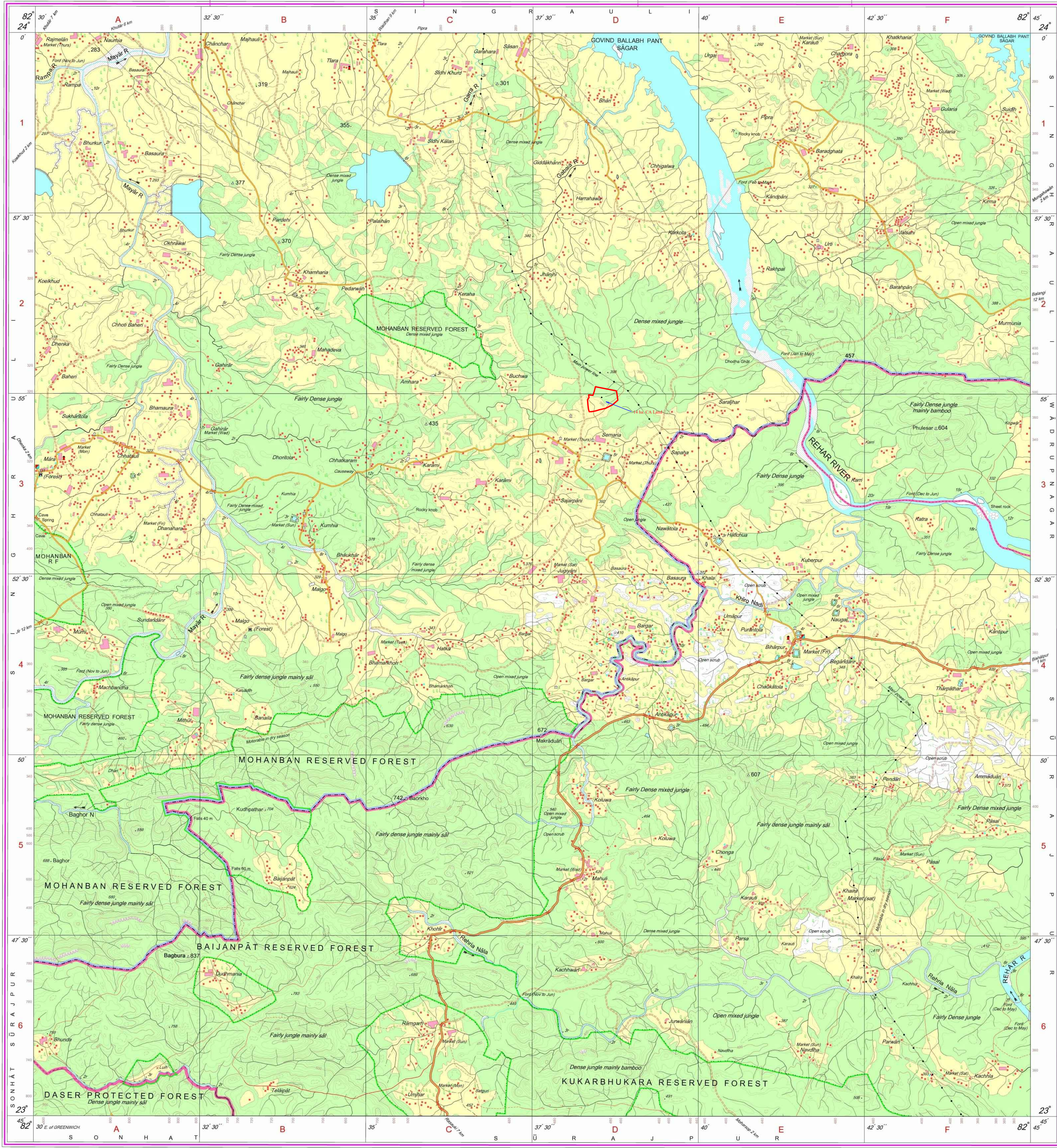
For further details about this map, please contact

Director  
Chhattisgarh Geo-Spatial Data Centre  
Survey of India, Pachped Naka  
Raipur - 492001

WEBSITE - [www.surveyofindia.gov.in](http://www.surveyofindia.gov.in)

Reproduction in whole or part by any means is prohibited  
without the written permission of Survey of India, the  
National Mapping Agency.

GOVERNMENT OF INDIA COPYRIGHT, 2009.



REG. No.

-SPG D19 (Chhattisgarh) GOC-1:50,000-

भारत के सर्वेक्षण के निदेश में प्रकाशित,  
Published under the direction of Surveyor General of India,  
Survey of India, Hoshiarpur Estate, Post Box No.37, Dehra Dun-248001 (Uttarakhand),  
Department of Science & Technology, Government of India.

PRINTED AT THE SOUTHERN PRINTING GROUP OF SURVEY OF INDIA.