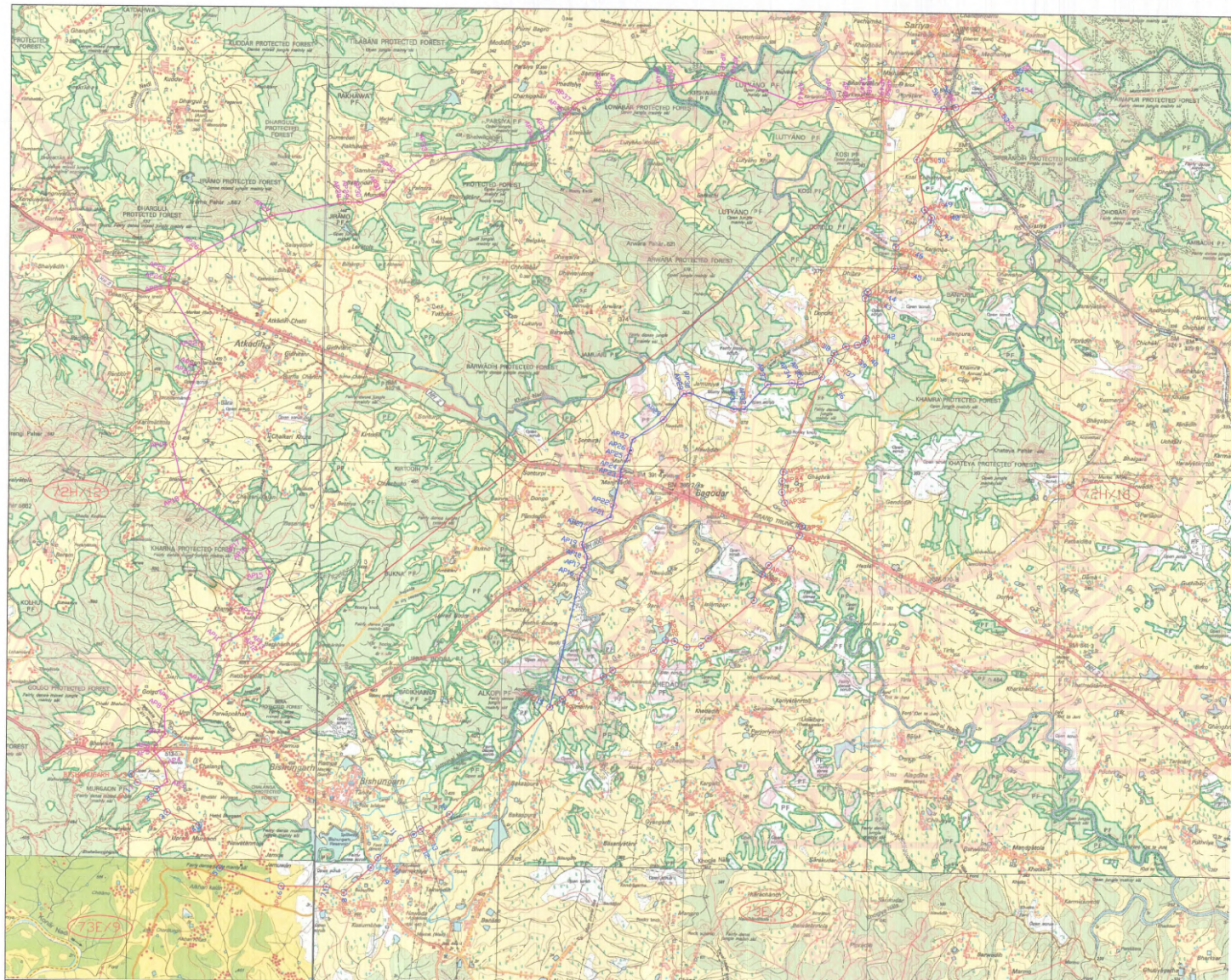


JHARKHAND URJA SANCHARAN NIGAM LIMITED									
132 KV D/C SARIA-BISHNUGARH TRANSMISSION LINE									
03 ALTERNATIVE ROUTE EXAMINATION									
Sl No	Description		ROUTE I (FINAL)		Route II		Route III		
1	Route Particulars								
	a) Colour		RED		BLUE		MAGENTA		
	b)BEE Line		25.460 KM		25.460 KM		25.460 KM		
	c) Length		33.138 KM		33.490 KM		35.870 KM		
	d)Angle Points		55		55		55		
2	Environmental Impact		N/A		N/A		N/A		
	i) Houses within ROW		No houses within ROW corridor		No houses within ROW corridor		No houses within ROW corridor		
	ii)Forest Involvement	Forest Land	17.287 KM	46.6740Ha.	6.124 KM	16.5348 Ha.	7.350 KM	19.845 Ha.	
		JJ Land	3.820 KM	10.3140Ha.	17.111 KM	46.1997 Ha.	18.5970 KM	50.2119 Ha.	
		Total	21.107 KM	56.9880 Ha.	23.235 KM	62.7345 Ha.	25.947 KM	70.0569 Ha.	
3	Details of Crossing								
	a) No of Railway Crossing		1		1		1		
	b) HT Line (132 kv/ 220 kv/400 kv/765 kv) Crossing Nos.		5		5		5		
	c) National Highway Crossings Nos.		1		2		2		
	d) River Crossing Nos.		1		2		6		
4	Recommendations		This alternative (ROUTE-1 FINAL) has minimum Route length though having the same no. of angle points,it has been found most suitable as it is having a well connected road network for construction and maintenance of the T/L with less forest length compared to other two alternatives.Henc considered most feasible and economical.						

SMITHA PANKAJ
I.F.S.
Divisional Forest Officer
Hazaribag East Forest Division

Senior Manager
Transmission Division, Hazaribag
Jharkhand Urja Sancharan Nigam Ltd.

PRAVIN RAM
Senior Manager
Transmission Division, Hazaribag
Jharkhand Urja Sancharan Nigam



LINEAR SCALE

0 10 20 30 40 50 60 70 80 90 100

LEGENDS

METAL ROAD	
UNMETAL ROAD	
RAIL TRACK / FORTIFICATION	
RAILWAY: BROADGUAGE/DOUBLE WITH STATION	
RAILWAYS: OTHER GAGES/DOUBLE WITH STATION	
CONTIGUOUS WITH SUB-SECTION	
TOWNS OR VILLAGES	
TEMPLES, CHURCHES, MONASTIC, DRIVE	
PALMS, OTHER TREES	
BOUNDARY: INTERNATIONAL	
DISTRICT / SUB-DIVISION	
RECH MARK	
FORESTS, RESERVES, NOTIFIED	
HOSPITAL, DISPENSARY, LABORATORY	
POWER LINE	
AERODROME	
HELIPAD	

DESCRIPTION	NO OF AP	FOREST LENGTH (KM)	LENGTH (KM)	SHOWN AS
ROUTE 1	55	21.107	33.318	
ROUTE 2	55	23.235	33.490	
ROUTE 3	55	25.947	35.870	
BEE LINE		25.46 KM		

CLIENT	JHARKHAND URJA SANCHARAN NIGAM LIMITED
CONTRACTOR	L&T CONSTRUCTION
TITLE	ROUTE ALIGNMENT PLAN 132 KV BISHNUGARH - SARIYA TRANSMISSION LINE (INT-307)
FOR L&T	FOR JUSNL
SHEET	1 OF 1
SCALE	1 : 50000

Subject to the condition that you are not absolved from responsibility for correctness of the materials supplied as per specification.

Route 3 checked & found best among other two routes

Route 2 found feasible compare than other routes

Checked & Recommended
For the Working Techno Concept Pvt. Ltd.



Checked & Recommended
For the Working Techno Concept Pvt. Ltd.

Deputy General Manager
Transmission Circle, Hazaribagh

General Manager
(Contracts & Materials) JUSNL, HQ, Ranchi