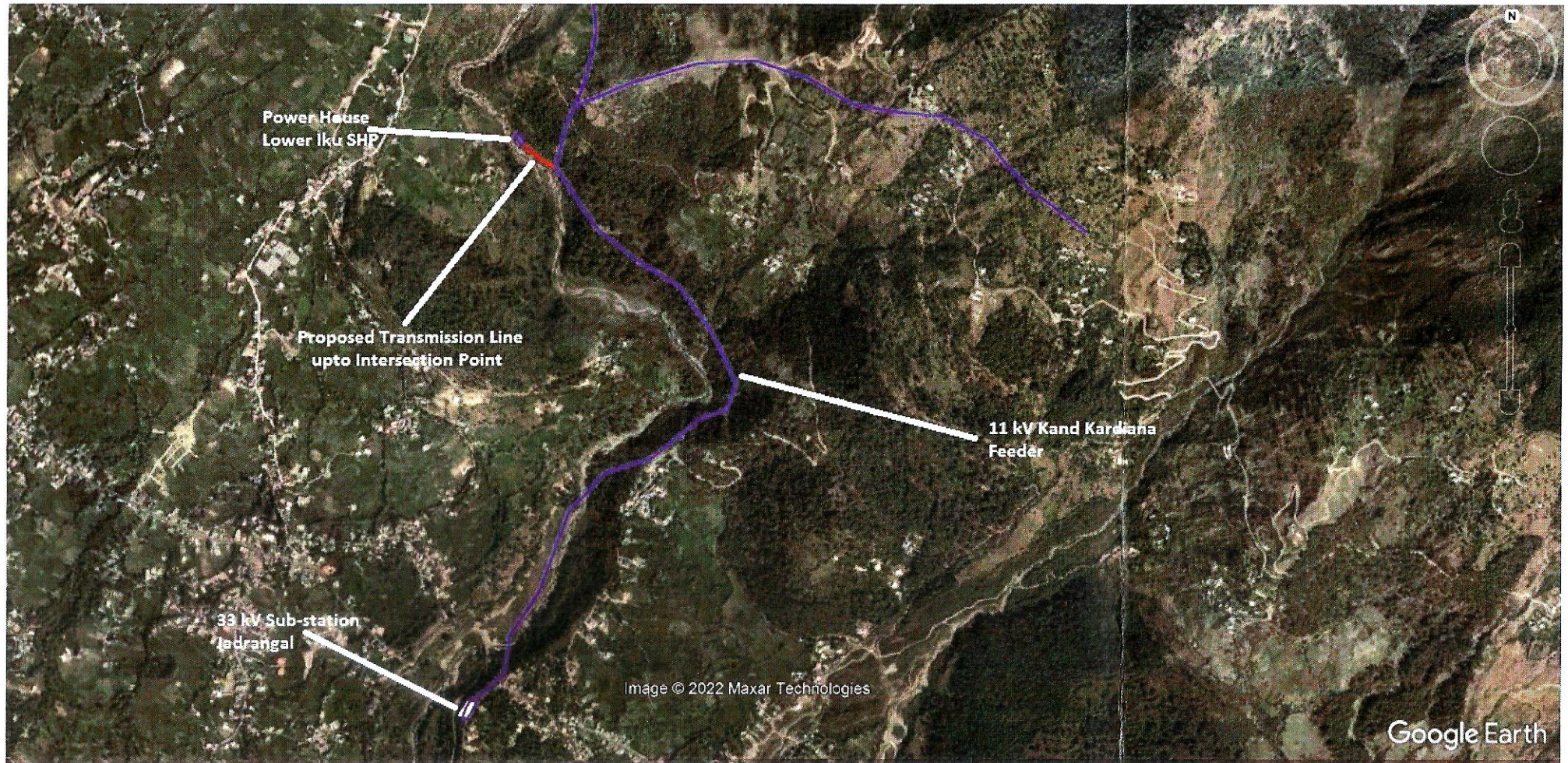




# POWER EVACUATION PLAN FOR LOWER IKU SMALL HYDRO PROJECT



INDEX	
	Existing 11 kV Line
	Proposed Transmission Line

Assistant Engineer  
Electrical Sub Division,  
HPSEBL, Sidhpur

For Sanjeev Hydro Projects Pvt. Ltd.  
Authorised Signatory

Divisional Forest Officer  
Forest Division  
Sidhpur