

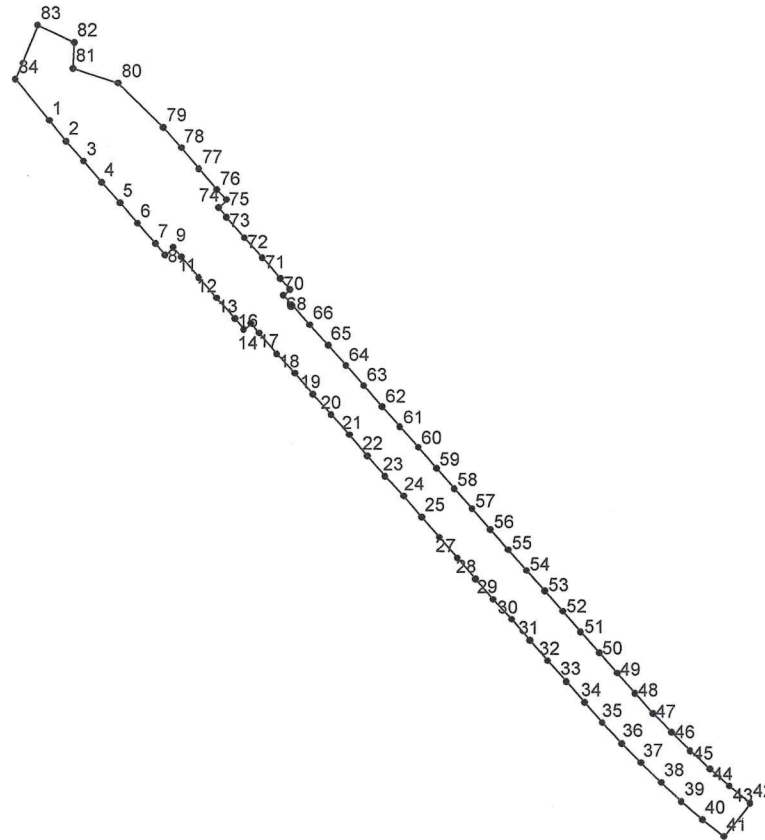
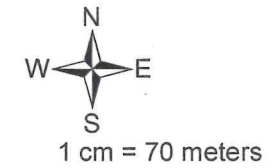
79 18'0"E

79 18'30"E

DGPS map of Proposed restoration of Rail connectivity between Rameswaram and Dhanuskodi
across Rameswaram R.F. in Rameswaram Taluk, Ramanathapuram District.

Bit - I

Total Area - 4.6634 Ha.



Handwritten signature
SQU.

Handwritten signature
AYEN/CN/MDO

Handwritten signature
DEPUTY CHIEF ENGINEER IV
CONSTRUCTION
S. RAILWAY
ARASARADI
MADURAI 625 016

79 18'0"E

79 18'30"E

9 16'30"N

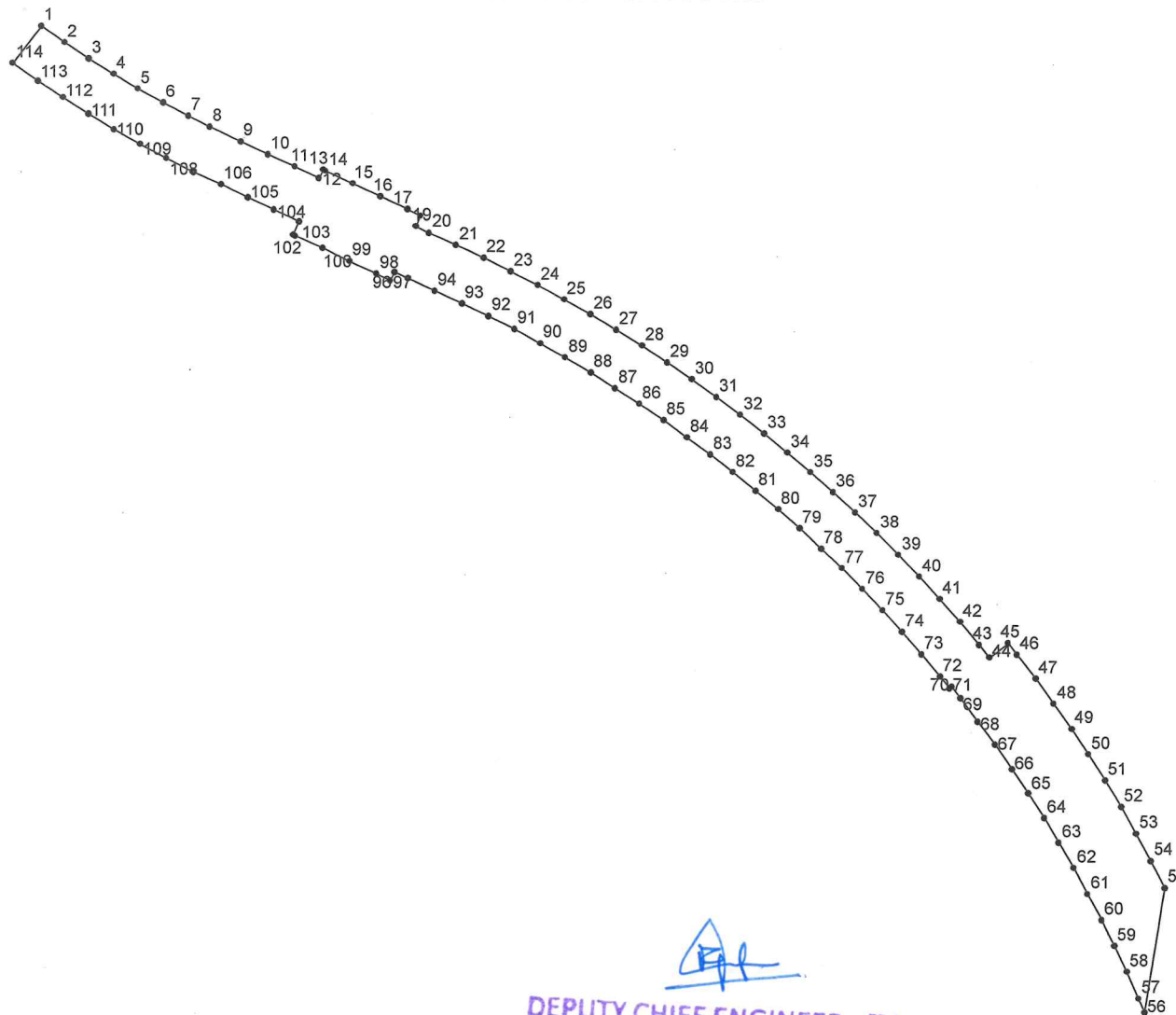
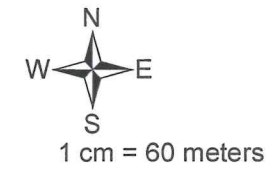
9 16'30"N

79 18'30"E

DGPS map of Proposed restoration of Rail connectivity between Rameswaram and Dhanuskodi
across Rameswaram R.F. in Rameswaram Taluk, Ramanathapuram District.

Bit - II

Total Area - 5.4194 Ha.



Handwritten signature
S.E/W.

Handwritten signature
ARER/CH/MDU

Handwritten signature
DEPUTY CHIEF ENGINEER IV
CONSTRUCTION
S. RAILWAY
ARASARADI
MADURAI 625 016

79 18'30"E

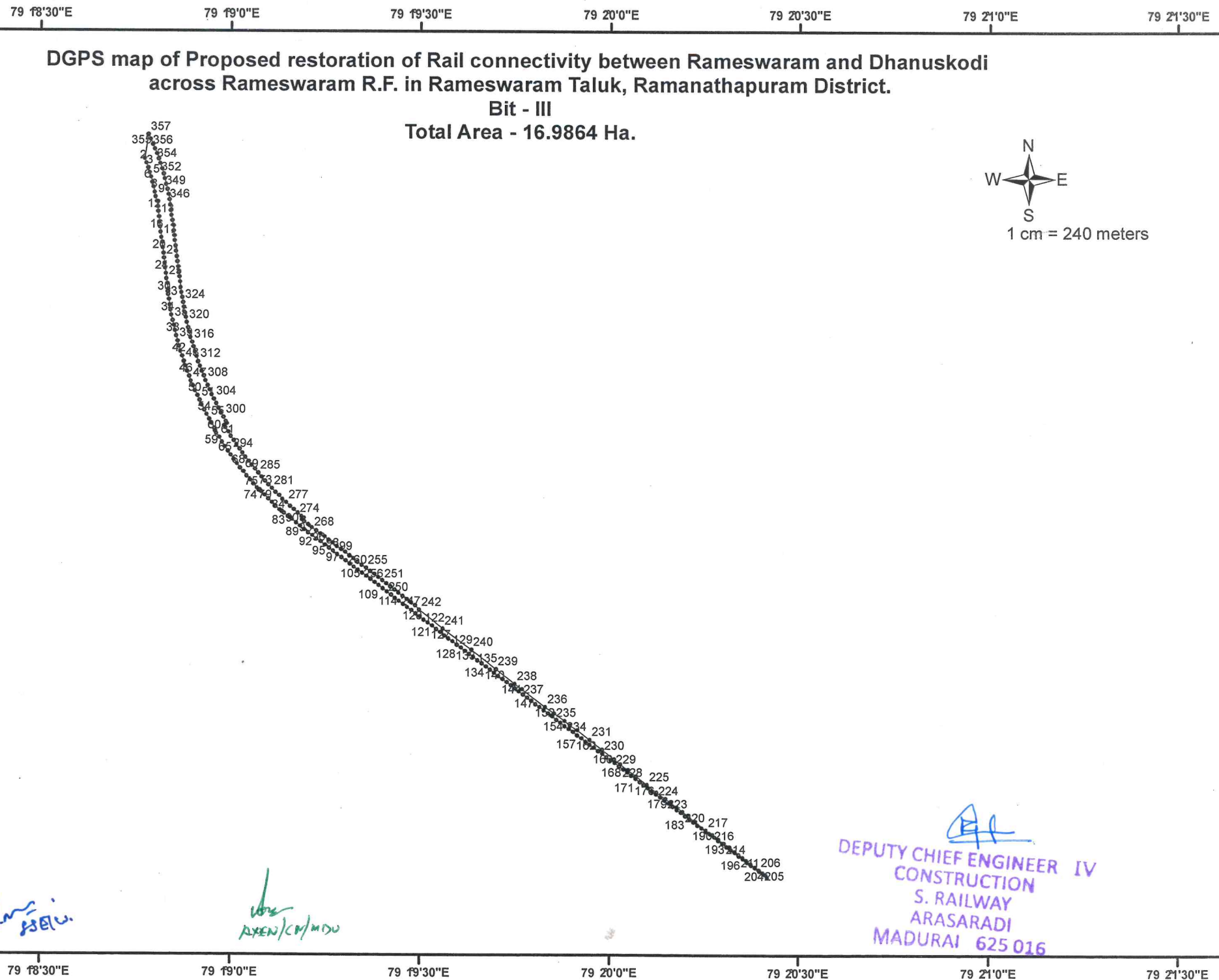
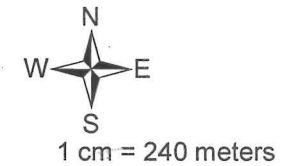
9 18'0"N

9 18'0"N

DGPS map of Proposed restoration of Rail connectivity between Rameswaram and Dhanuskodi
across Rameswaram R.F. in Rameswaram Taluk, Ramanathapuram District.

Bit - III

Total Area - 16.9864 Ha.



Handwritten signature in blue ink.

Handwritten signature in green ink.
ARUN/CB/MOU

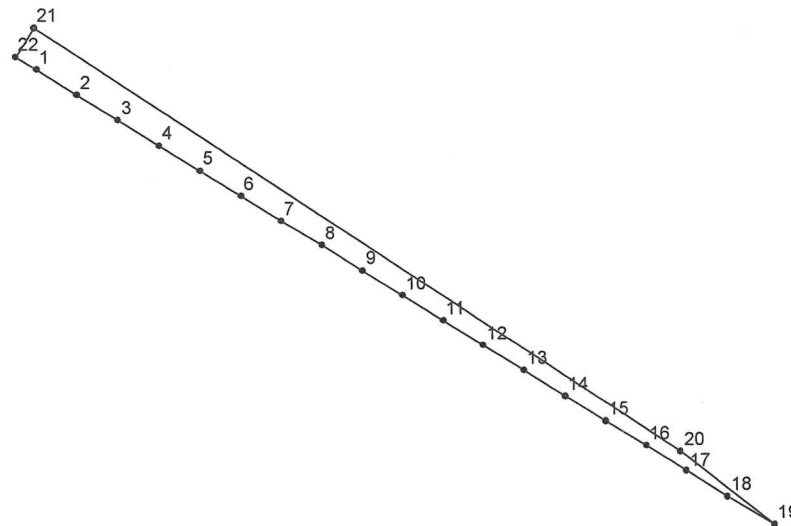
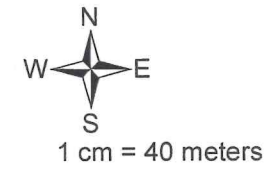
Handwritten signature in blue ink.
DEPUTY CHIEF ENGINEER IV
CONSTRUCTION
S. RAILWAY
ARASARADI
MADURAI 625 016

79 22'30"E

DGPS map of Proposed restoration of Rail connectivity between Rameswaram and Dhanuskodi
across Rameswaram R.F. in Rameswaram Taluk, Ramanathapuram District.

Bit - IV

Total Area - 0.5312 Ha.



9 12'0"N

J. L. M.
23/01/20

AR
ARAW/CM/M/DU

AR
DEPUTY CHIEF ENGINEER IV
CONSTRUCTION
S. RAILWAY
ARASARADI
MADURAI 625 016

79 22'30"E

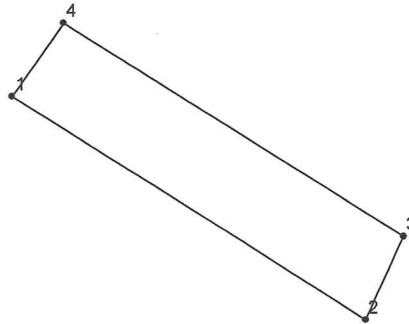
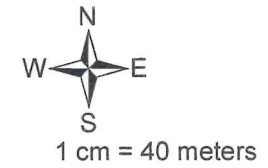
9 12'0"N

79 23'0"E

DGPS map of Proposed restoration of Rail connectivity between Rameswaram and Dhanuskodi
across Rameswaram R.F. in Rameswaram Taluk, Ramanathapuram District.

Bit - V

Total Area - 1.0128 Ha.



Handwritten signature
Jhane.
S.S.M.

Handwritten signature
AXEW/CW/MIDU

Handwritten signature
DEPUTY CHIEF ENGINEER IV
CONSTRUCTION
S. RAILWAY
ARASARADI
MADURAI 625 016

79 23'0"E

9 12'0"N

9 12'0"N