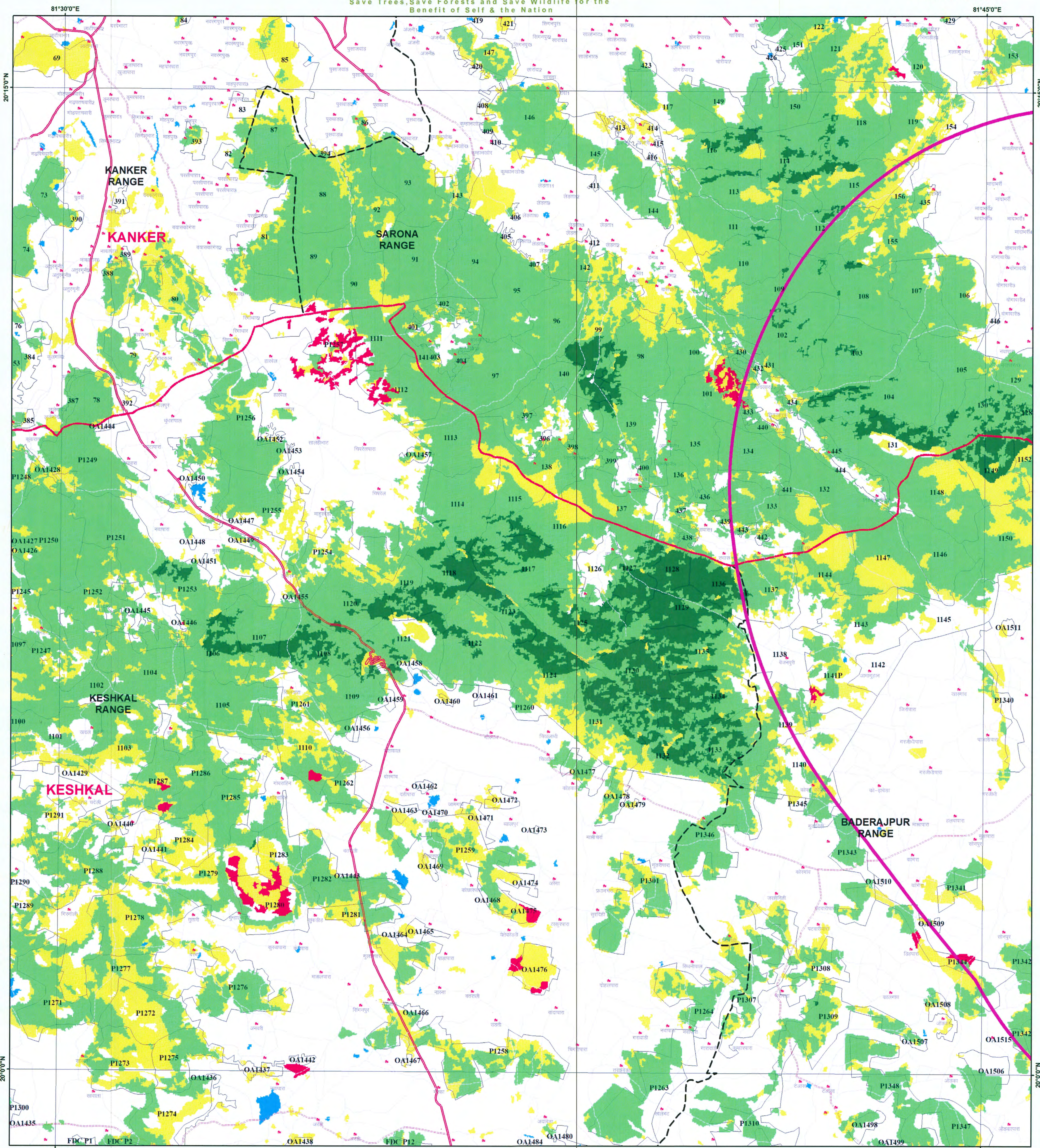


# Chhattisgarh Forest Department Forest Cover Map Sheet. No. 64 H 12

Save Trees, Save Forests and Save Wildlife for the  
Benefit of Self & the Nation

TOPOSHEET NO. 64 H 12



## LEGEND

- TOWN / VILLAGE
- Chainage Points
- 10\_KM\_Buffer
- Railway Line
- ROAD\_TYPE
  - Cart Track
  - Metalled Road
  - UnMetalled Road
  - DGPS Road Polygon
  - Forest Compartment Boundary
  - Forest Range Boundary
  - Forest Division Boundary
- Procted Area
- CGGrid\_15m\_region
- Forest Cover (FSI Report- 2019)
  - MDF
  - NON FOREST
  - OPEN FOREST
  - SCRUB
  - VDF
  - WATER

1:50,000

0 0.5 1 2 3 4 Km

Divisional Forest Officer  
Keshkal Division  
Keshkal (C. G.)



MAP PREPARED BY  
Pragati/Forest Programme  
Name: *[Signature]*  
Signature: *[Signature]*

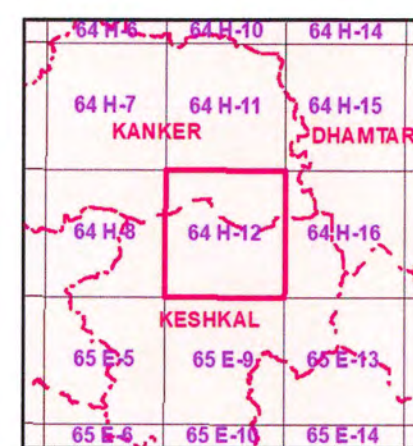
### MAP PREPARED FOR:-

परियोजना निदेशक,  
परियोजना क्रियाचयन इकाई धमतरी,  
भारतीय राष्ट्रीय राजमार्ग प्राधिकरण,  
ब्लॉक एफ-5 शिवराज ग्राम, सिहावा रोड,  
धमतरी - 493773 (छ.ग.)

REG.No. :- FP/CG/ROAD/119866/2021

धमतरी जिले के धमतरी वनमंडल, कांकेर जिले के कांकेर वनमंडल एवं कोण्डामांव जिले के कोण्डामांव वनमंडल अंतर्गत वन भूमि के गैर वानिकी उपयोग हेतु NHAI PIU DHAMTARI द्वारा Development of Economic Corridors, Inter-corridors, feeder routes and Coastal Road to improve the efficiency, of freight movement in India (Lot-3/Odisha & Jharkhand/Package-2) Raipur-Vishakhapatnam (Ch 0.000- Ch. 124.661) in the State of Chhattisgarh under Bharamala Pariyojana. (Forest Proposal is for between km 42+844 to km 124.661)

Note :- Shapefile provided by user agencies.



Sheet to Index

Data Source:- 1. Compartment Boundary from Stock Map  
2. Forest Cover Based on Digital Interpretation of Data Period Dec 2017 to Dec 2017 (LUS-II from Resourceat-2 and IRS-P6 (Resourceat-I))  
FSI Report 2018  
3. General Features are based on SDO Digital Data (Scale 1: 50,000) and Chhattisgarh GeoDatabase.

Source:- FOREST SURVEY OF INDIA FOREST COVER CLASSIFICATION SCHEME.  
Very Dense Forest:- All land with tree cover (including Mangrove cover) of canopy density of 70% and above.  
Moderately Dense Forest:- All land with tree cover (including Mangrove Cover) of canopy density between 40% and 70% above.  
Open Forest:- All land with tree cover (including Mangrove Cover) of canopy density between 10-40%.  
Scrub:- All forest lands with poor tree growth mainly of small or stunted trees having canopy density less than 10%.  
Non Forest:- Any Area not included in the above classes.



SCALE 1:50000

NOT FOR EXPORT

TOPOSHEET NO. 64 H 12

Notes:- 1. Provisional Map  
1/12 is an indicative map showing distribution of vegetation.  
2. Boundary of Orange Area have not been shown.  
3. Validation of legal Forest Area with survey of India have not done.  
4. If any difference occurs between vegetation and stock map, stock map should be followed.  
5. No survey should be performed on the basis of this map.

Disclaimer:- The Map provided is subject to inherent discrepancy amongst layers associated with incompatibility between different platforms of reference (L.C.C. WGS.84 etc) and probable human error angle in digitization. The user agency is advised to use the features of map subject to prior authentication & supervision by the authorized person of the concerned forest division. The FMS division shall not be responsible for any complications (Legal or otherwise), arising out of this map.



Prepared and Printed by:- GIS Cell  
Forest Management Information System Division, Raipur



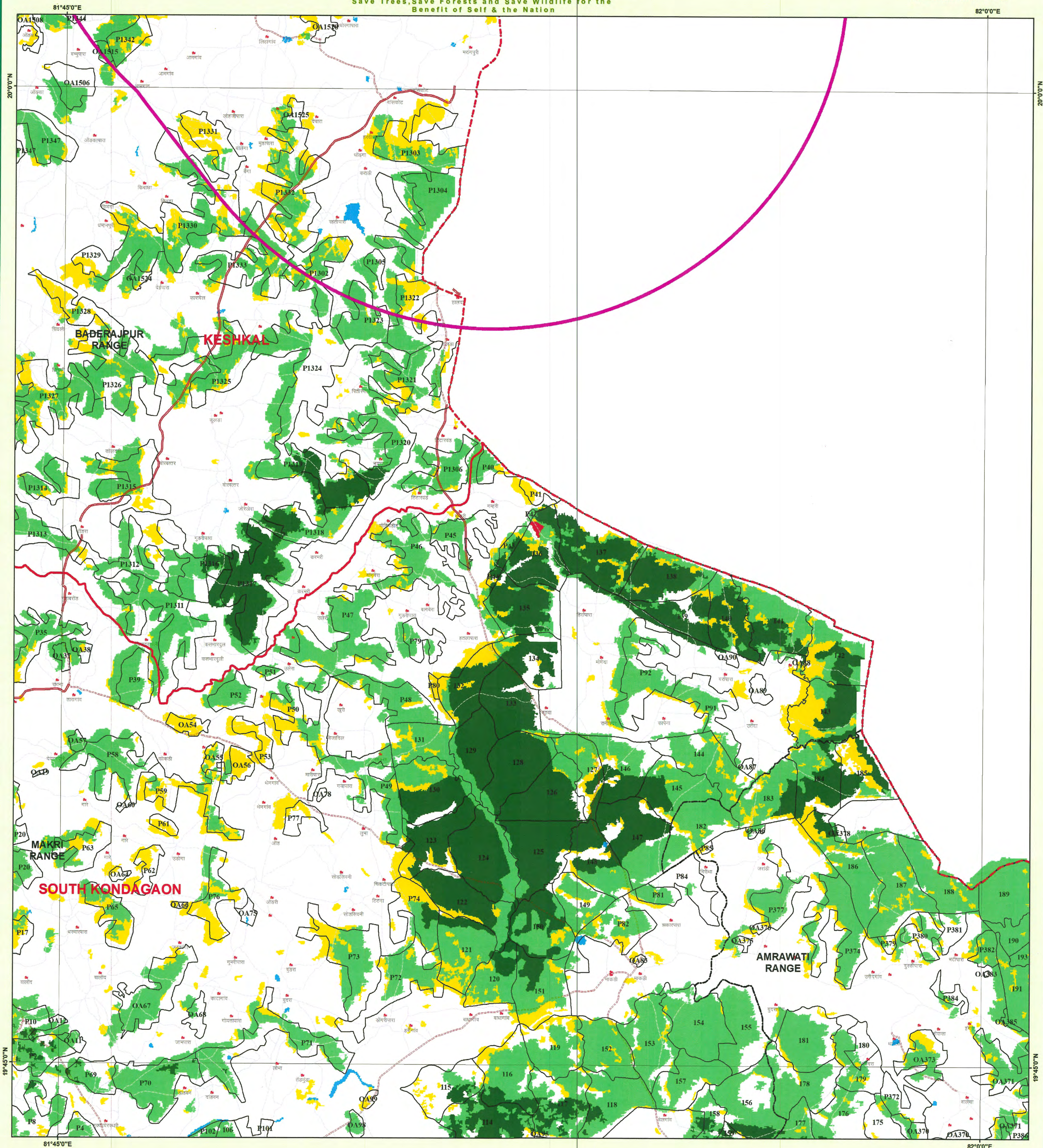
# Chhattisgarh Forest Department

## Forest Cover Map

### Sheet. No. 65 E 13

Save Trees, Save Forests and Save Wildlife for the Benefit of Self & the Nation

TOPOSHEET NO. 65 E 13



#### LEGEND

- TOWN / VILLAGE
- Chainage Points
- 10\_KM\_Buffer
- Railway Line
- ROAD\_TYPE**
  - Cart Track
  - Metalled Road
  - UnMetalled Road
  - DGPS Road Polygon
  - Forest Compartment Boundary
  - Forest Range Boundary
  - Forest Division Boundary
- Procted Area
- CGGrid\_15m\_region
- Forest Cover (FSI Report- 2019)**
  - MDF
  - NON FOREST
  - OPEN FOREST
  - SCRUB
  - VDF
  - WATER

1:50,000

0 0.5 1 2 3 4 Km

Divisional Forest Officer  
Keshkal Division  
Keshkal (C. G.)



MAP PREPARED BY  
Programmer/Asst. Programme  
Name: *M. M. Singh*  
Signature: *M. M. Singh*

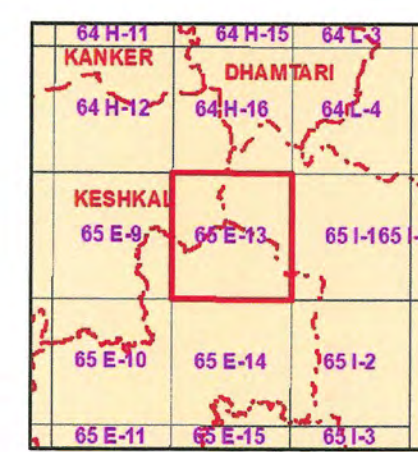
PROJECT DIRECTOR  
NHAI, PIU Dhamtari (C. G.)

#### MAP PREPARED FOR:-

परियोजना निदेशक,  
परियोजना क्रियान्वयन इकाई धमतरी,  
भारतीय राष्ट्रीय राजमार्ग प्राधिकरण,  
ब्लॉक एफ-5 शिवराज ग्रिन्स, सिद्धावा रोड,  
धमतरी- 493773 (छ.ग.)  
REG.No. :- FP/CG/ROAD/119866/2021

धमतरी जिले के धमतरी वनखंड, कांकेर जिले के कांकेर वनखंड एवं कोण्डगांव जिले के केशकाल वनखंड अंतर्गत वन भूमि के गैर वानिकी उपयोग हेतु NHAI PIU Dhamtari द्वारा Development of Economic Corridors, Inter-corridors, feeder routes and Coastal Road to improve the efficiency, of freight movement in India (Lot-3/Odisha & Jharkhand/Package-2) Raipur-Vishakhapatnam (Ch 0.000- Ch. 124.661) in the State of Chhattisgarh under Bharatmala Pariyojana. (Forest Proposal is for between km 42+844 to km 124.661)

Note :- Shapefile provided by user agencies.



Sheet to Index

Data Source:- 1. Compartment Boundary from Stock Map  
2. Forest Cover Based on Digital Interpretation of Data Period Oct 2017 to Dec 2017 (LIS-III) from Resourcesat-2 and IRS-P6 (Resourcesat-4) FSI Report 2019.  
3. General Features are based on SSI Digital Data (Scale 1: 50,000) and Chhattisgarh GeoDatabase.

Source:- FOREST SURVEY OF INDIA FOREST COVER CLASSIFICATION SCHEME  
Very Dense Forest:- All land with tree cover (including Mangrove cover) of canopy density of 70 % and above.  
Moderately Dense Forest:- All land with tree cover (including Mangrove Cover) of canopy density between 40% and 70% above.  
Open Forest:- All land with tree cover (including Mangrove Cover) of canopy density between 10-40%  
Scrubs:- All forest lands with poor tree growth mainly of small or stunted trees having canopy density less than 10%  
Non Forest:- Any Area not included in the above classes.



SCALE 1:50000

NOT FOR EXPORT

TOPOSHEET NO. 65 E 13

(Notes) :- Provisional Map  
1. It is an indicative map showing distribution of vegetation.  
2. Boundary of Orange Area have not been shown.  
3. Validation of legal Forest Area with survey of India have not done.  
4. If any difference occurs between vegetation and stock map, stock map should be followed.  
5. No survey should be performed on the basis of this map.

Disclaimer:- The Map provided is subject to inherent discrepancy amongst layers associated with incompatibility between different platforms of reference (I.C.C. W.G.S.84 etc) and probable human error angel in digitization. The user agency is advised to use the features of map subject to prior authentication & supervision by the authorized person of the concerned forest division. The FMS division shall not be responsible for any complications (Legal or otherwise) arising out of this maps.



Prepared and Printed by:- GIS Cell  
Forest Management Information System Division, Raipur



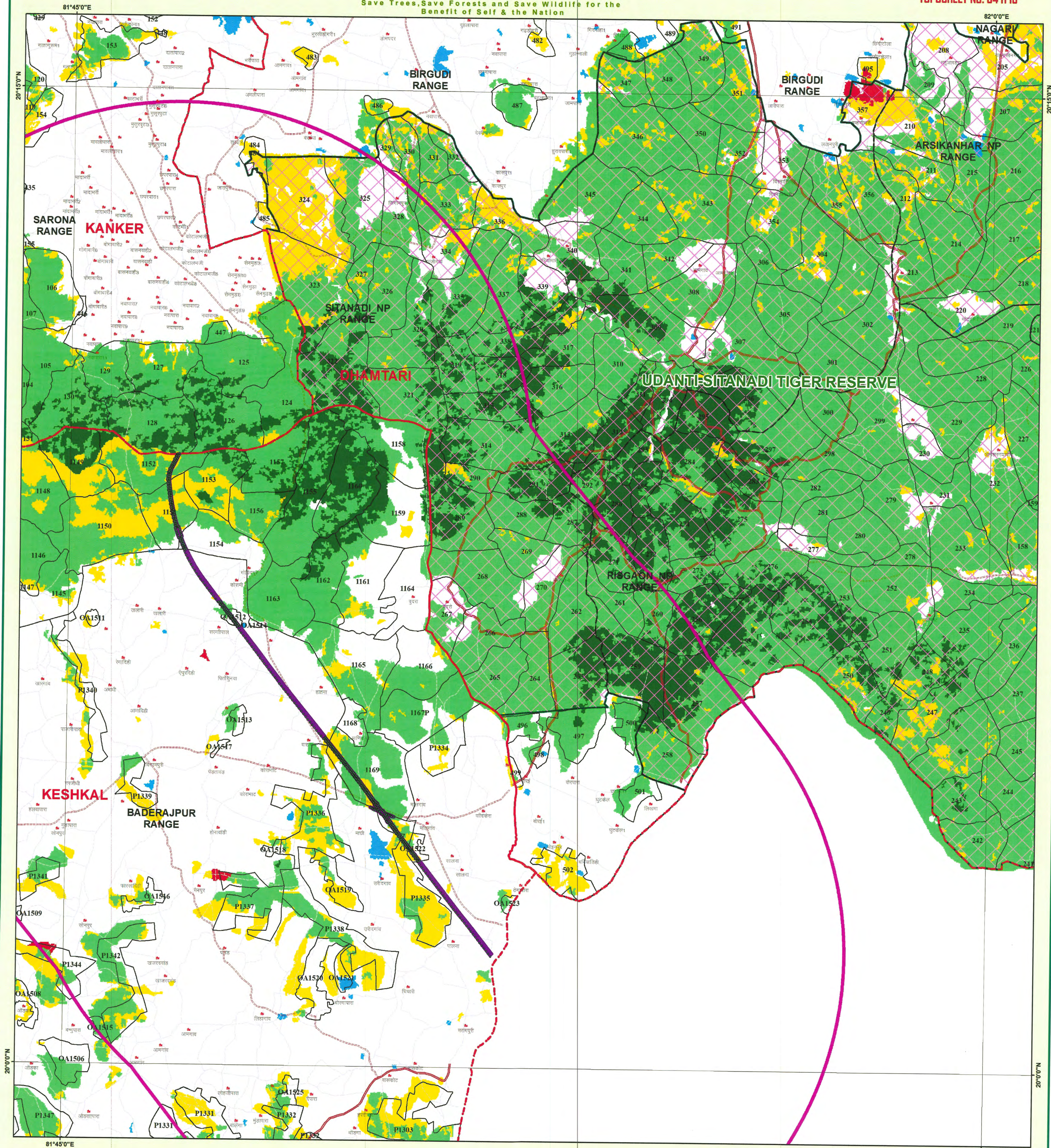
# Chhattisgarh Forest Department

## Forest Cover Map

### Sheet. No. 64 H 16

Save Trees, Save Forests and Save Wildlife for the Benefit of Self & the Nation

TOPOSHEET NO. 64 H 16



#### LEGEND

- TOWN / VILLAGE
- Chainage Points
- 10\_KM\_Buffer
- DGPS Road Polygon
- Railway Line
- ROAD\_TYPE
  - Cart Track
  - Metalled Road
  - UnMetalled Road
- Forest Compartment Boundary
- Forest Range Boundary
- Forest Division Boundary
- Procted Area
- CGGrid\_15m\_region
- Forest Cover (FSI Report- 2019)
  - MDF
  - NON FOREST
  - OPEN FOREST
  - SCRUB
  - VDF
  - WATER

1:50,000

0 0.5 1 2 3 4 Km

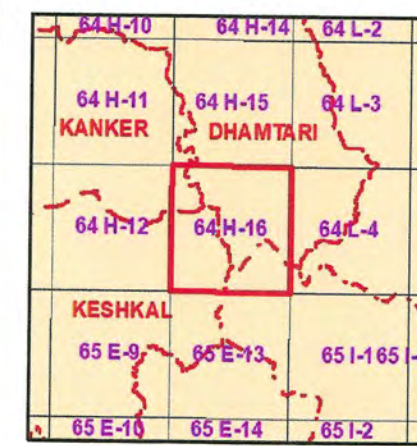
Divisional Forest Officer  
Keshkal Division  
Keshkal (C. G.)

MAP PREPARED FOR:-  
परियोजना निदेशक,  
परियोजना कियान्वयन इकाई धमतरी,  
भारतीय राष्ट्रीय राजमार्ग प्राधिकरण,  
ब्लॉक एफ-5 शिवराज ग्रीन्स, सिहावा रोड,  
धमतरी- 493773 (छ.ग.)

REG.No. :- FP/CG/ROAD/119866/2021

धमतरी जिले के धमतरी वनमंडल, कंकर जिले के कंकर वनमंडल एवं कोण्डामांव जिले के केशकाल वनमंडल अंतर्गत वन भूमि के गैर वानिकी उपयोग हेतु NHAI PIU DHAMTARI द्वारा Development of Economic Corridors, Inter-corridors, feeder routes and Coastal Road to Improve the efficiency, of freight movement in India (Lot-3/Odisha & Jharkhand/Package-2) Raipur-Vishakhapatnam (Ch 0.000- Ch. 124.661) in the State of Chhattisgarh under Bharatmala Pariyojana. (Forest Proposal is for between km 42+844 to km 124.661)

Note :- Shapefile provided by user agencies.



Sheet to Index

Data Source:- 1. Compartment Boundary from Stock Map  
2. Forest Cover Based on Digital Interpretation of Data Period Oct 2017 to Dec 2017 L1SS-II from Resourcesat-2 and IRS-P6 (Resourcesat-1) FSI Report 2018.  
3. General Features are based on SOI Digital Data (Scale 1: 50,000) and Chhattisgarh GeoDatabase.

Source:- FOREST SURVEY OF INDIA FOREST COVER CLASSIFICATION SCHEME  
Very Dense Forest:- All land with tree cover (including Mangrove cover) of canopy density of 70 % and above.  
Moderately Dense Forest:- All land with tree cover (including Mangrove Cover) of canopy density between 40% and 70% above.  
Open Forest:- All land with tree cover (including Mangrove Cover) of canopy density between 10-40%  
Scrub:- All forest lands with poor tree growth mainly of small or stunted trees having canopy density less than 10%  
Non Forest:- Any Area not included in the above classes.



SCALE 1:50000

TOPOSHEET NO. 64 H 16

NOT FOR EXPORT



Prepared and Printed by:- GIS Cell  
Forest Management Information System Division, Raipur