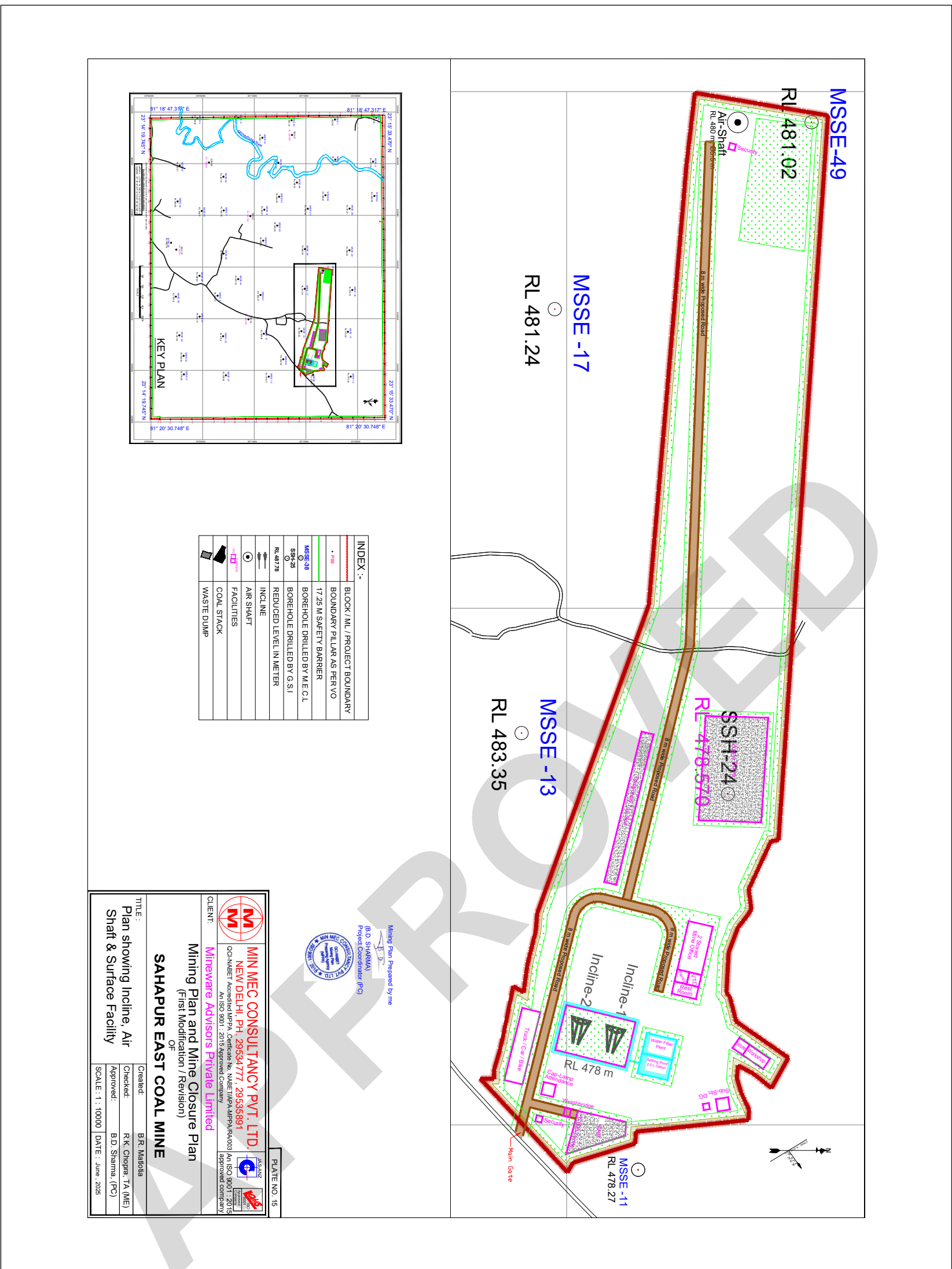


# UG Plate-15



Min Mec Consultancy Pvt. Ltd.  
 NEW DELHI, PH: 29534777, 29535891  
 MINING ADVISORS PRIVATE LIMITED

CLIENT: SAHAPUR EAST COAL MINE

TITLE: Plan showing Incline, Air Shaft & Surface Facility

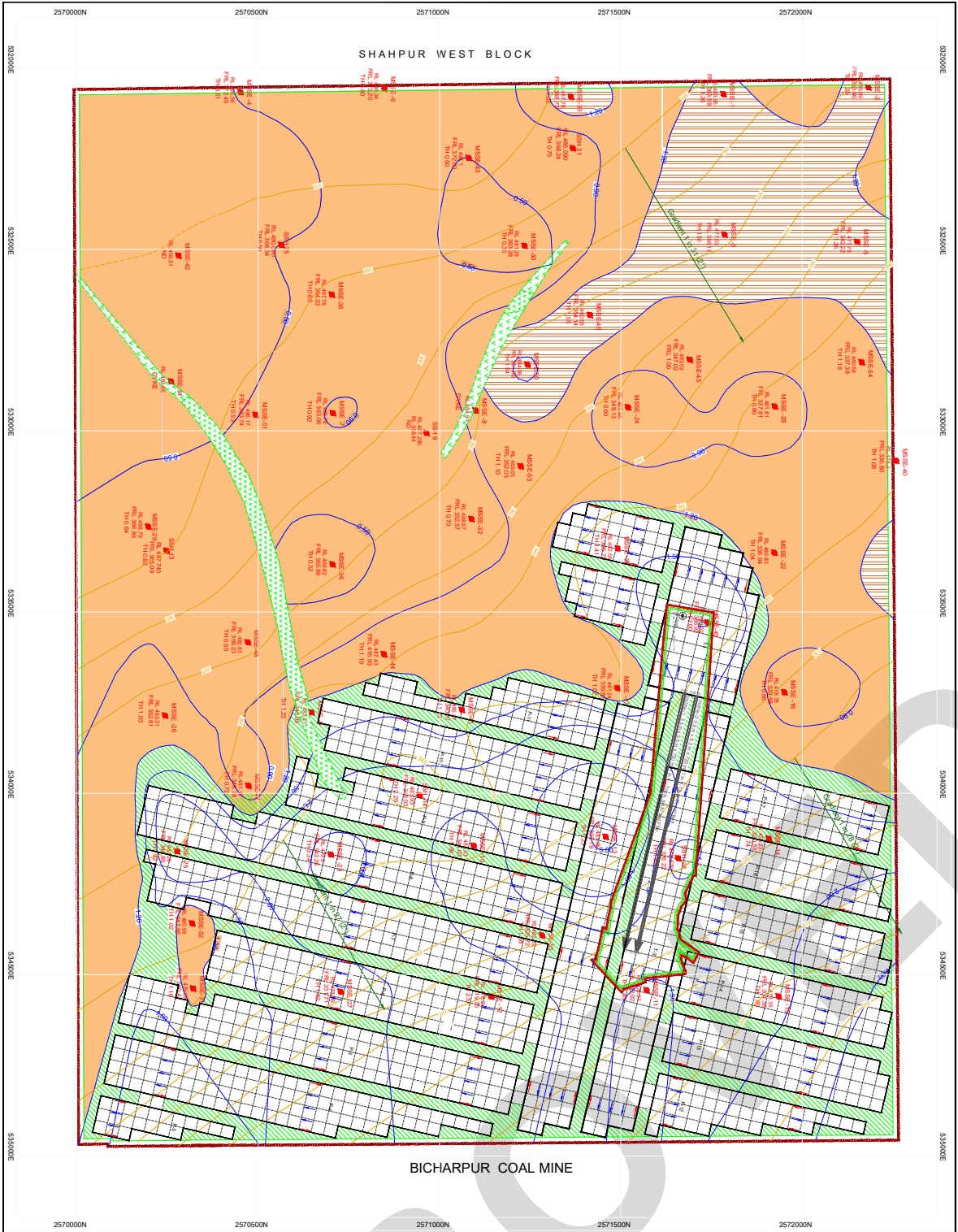
Created: B.R. Madhwa  
 Checked: R.K. Chopra, T.A. (ME)  
 Approved: B.D. Sharma, (PC)  
 SCALE: 1:10000 | DATE: June, 2025



Handwritten signature or initials.

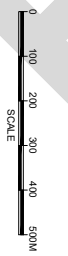






**INDEX :-**

	BLOCK / ML / PROJECT BOUNDARY
	BOREHOLE DRILLED BY M.E.C.L
	BOREHOLE DRILLED BY G.S.I
	INCLINES
	AIR SHAFT
	INFRASTRUCTURES AREA
	PANEL LAYOUT
	DOLERITE DYKE
	EFFECTIVE THICKNESS CONTOUR
	SEAM DEPTH CONTOUR
	SEAM GRADIENT
	UNWORKABLE SEAM (<1.20 m)
	PANEL BARRIER
	UNCOMMERCIAL AREA
	INTAKE & RETURN AIRWAYS



**MIN MEC CONSULTANCY PVT. LTD.**  
 NEW DELHI, PH: 29534777, 29535881  
 DOCUMENT: Mining Plan, Seam IIIA, Bicharpur Coal Mine, Jharkhand  
 CLIENT: **Min Mec Consultancy Pvt. Ltd.**  
 Mining Plan and Mine Closure Plan (1st Modification)  
 OF  
**SAHAPUR EAST COAL MINE**

**TITLE:**  
**PANEL LAYOUT  
 OF SEAM IIIA**

Checked: **R.K. Chandra, I.A.M.E.**  
 Approved: **B.D. Sharma, I.C.E.**  
 SCALE: 1:4000 DATE: June, 2025

MINING PLAN NO. 1063

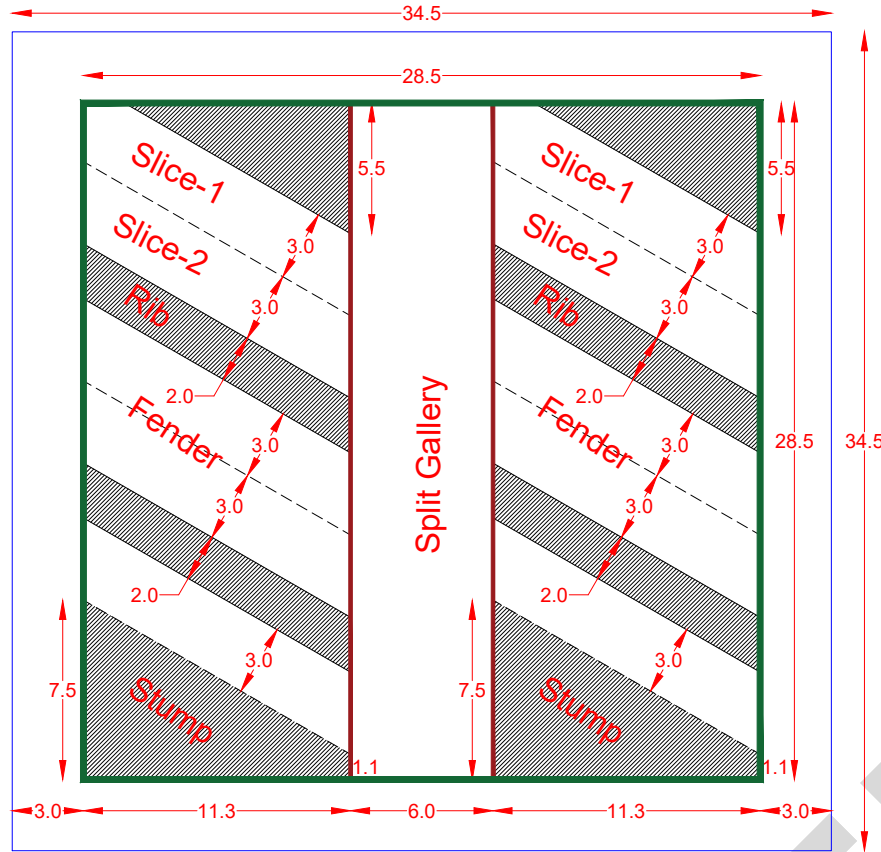


**INDEX :-**

	BLOCK / ML / PROJECT BOUNDARY
	MSF 28
	S1
	S2
	S3
	S4
	S5
	S6
	S7
	S8
	S9
	S10
	S11
	S12
	S13
	S14
	S15
	S16
	S17
	S18
	S19
	S20
	S21
	S22
	S23
	S24
	S25
	S26
	S27
	S28
	S29
	S30
	S31
	S32
	S33
	S34
	S35
	S36
	S37
	S38
	S39
	S40
	S41
	S42
	S43
	S44
	S45
	S46
	S47
	S48
	S49
	S50
	S51
	S52
	S53
	S54
	S55
	S56
	S57
	S58
	S59
	S60
	S61
	S62
	S63
	S64
	S65
	S66
	S67
	S68
	S69
	S70
	S71
	S72
	S73
	S74
	S75
	S76
	S77
	S78
	S79
	S80
	S81
	S82
	S83
	S84
	S85
	S86
	S87
	S88
	S89
	S90
	S91
	S92
	S93
	S94
	S95
	S96
	S97
	S98
	S99
	S100
	S101
	S102
	S103
	S104
	S105
	S106
	S107
	S108
	S109
	S110
	S111
	S112
	S113
	S114
	S115
	S116
	S117
	S118
	S119
	S120
	S121
	S122
	S123
	S124
	S125
	S126
	S127
	S128
	S129
	S130
	S131
	S132
	S133
	S134
	S135
	S136
	S137
	S138
	S139
	S140
	S141
	S142
	S143
	S144
	S145
	S146
	S147
	S148
	S149
	S150
	S151
	S152
	S153
	S154
	S155
	S156
	S157
	S158
	S159
	S160
	S161
	S162
	S163
	S164
	S165
	S166
	S167
	S168
	S169
	S170
	S171
	S172
	S173
	S174
	S175
	S176
	S177
	S178
	S179
	S180
	S181
	S182
	S183
	S184
	S185
	S186
	S187
	S188
	S189
	S190
	S191
	S192
	S193
	S194
	S195
	S196
	S197
	S198
	S199
	S200
	S201
	S202
	S203
	S204
	S205
	S206
	S207
	S208
	S209
	S210
	S211
	S212
	S213
	S214
	S215
	S216
	S217
	S218
	S219
	S220
	S221
	S222
	S223
	S224
	S225
	S226
	S227
	S228
	S229
	S230
	S231
	S232
	S233
	S234
	S235
	S236
	S237
	S238
	S239
	S240
	S241
	S242
	S243
	S244
	S245
	S246
	S247
	S248
	S249
	S250
	S251
	S252
	S253
	S254
	S255
	S256
	S257
	S258
	S259
	S260
	S261
	S262
	S263
	S264
	S265
	S266
	S267
	S268
	S269
	S270
	S271
	S272
	S273
	S274
	S275
	S276
	S277
	S278
	S279
	S280
	S281
	S282
	S283
	S284
	S285
	S286
	S287
	S288
	S289
	S290
	S291
	S292
	S293
	S294
	S295
	S296
	S297
	S298
	S299
	S300
	S301
	S302
	S303
	S304
	S305
	S306
	S307
	S308
	S309
	S310
	S311
	S312
	S313
	S314
	S315
	S316
	S317
	S318
	S319
	S320
	S321
	S322
	S323
	S324
	S325
	S326
	S327
	S328
	S329
	S330
	S331
	S332
	S333
	S334
	S335
	S336
	S337
	S338
	S339
	S340
	S341
	S342
	S343
	S344
	S345
	S346
	S347
	S348
	S349
	S350
	S351
	S352

# UG Plate-17

## 34.5 x 34.5 m Center-to-Center Pillar Development and Depillaring Calculations (Split and Fender Method)



Centre-to-centre Pillar x-section = 34.5 x 34.5 m  
 Avg. Seam Thickness (including all seams) = 2.5 m  
 Sp. Gravity = 1.5  
 In-situ Coal/Pillar = 34.5 x 34.5 x 2.5 x 1.5 = 4,463 Tonne  
 Gallery width = 6.0 m  
 Corner-to-corner Pillar x-section = 28.5 x 28.5 m  
 Initial Development Coal/Pillar =  $\{(34.5 \times 34.5) - (28.5 \times 28.5)\} \times 2.5 \times 1.5 = 1,418$  Tonne  
 % of Initial Development =  $1418 / 4463 = 32\%$

Now, Area of leftover Ribs/Pillar = 253 sq.m  
 Coal in leftover Ribs/Pillar =  $253 \times 2.5 \times 1.5 = 950$  Tonne  
 Depillaring Coal/Pillar =  $4463 - 1418 - 950 = 2,096$  Tonne  
 % of Depillaring =  $2096 / 4463 = 47\%$

So, overall extractable coal/Pillar =  $1418 + 2096 = 3,514$  Tonne  
 % of overall coal extraction =  $3514 / 4463 = 79\%$

Mining Plan Prepared by me

(B.D. SHARMA)  
 Project Coordinator (PC)

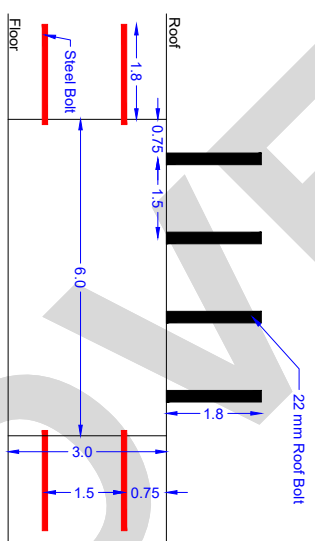
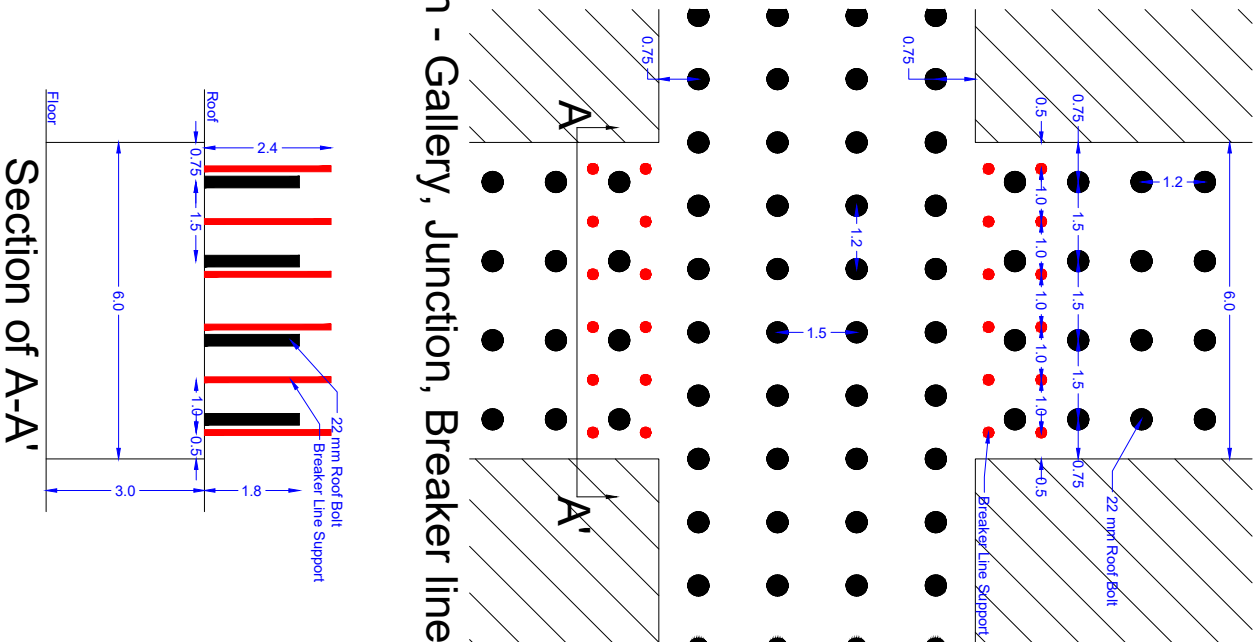


PLATE NO. 17

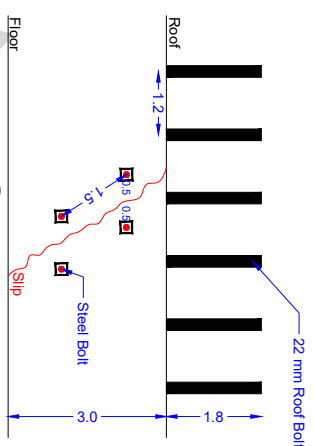
	<b>MIN MEC CONSULTANCY PVT. LTD.</b> NEW DELHI, PH. 29534777, 29535891 <small>QCI-NABET Accredited MPPA, Certificate No. NABET/APA-MPPA/RA/003 An ISO 9001 : 2015 Approved Company</small>	
	CLIENT: <b>Mineware Advisors Private Limited</b>	
<b>Mining Plan and Mine Closure Plan</b> (First Modification / Revision) OF <b>SAHAPUR EAST COAL MINE</b>		
TITLE : PILLAR SIZE-WISE COAL EXTRACTION %GE BY ADOPTING 4.8M WIDE GALLERIES DURING DEVELOPMENT AND DEPIllARING, DEPLOYING CM/ LHCM IN THIN & THICK SEAMS THROUGH "SPLIT & FENDER METHOD" AND "FISH & TAIL METHOD" OF EXTRACTION	Created: B.R. Matlotia Checked: R.K. Chopra, TA (ME) Approved: B.D. Sharma, (PC)	SCALE : NTS DATE : June , 2025

# UG Plate-18

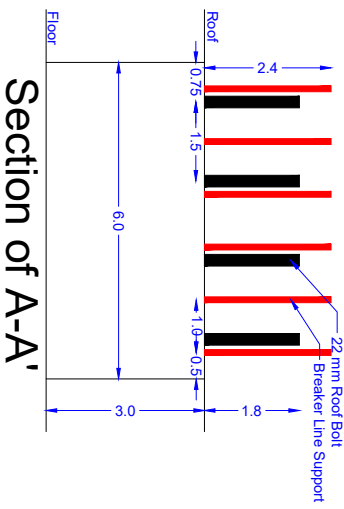
Plan - Gallery, Junction, Breaker line support



Plan



Section



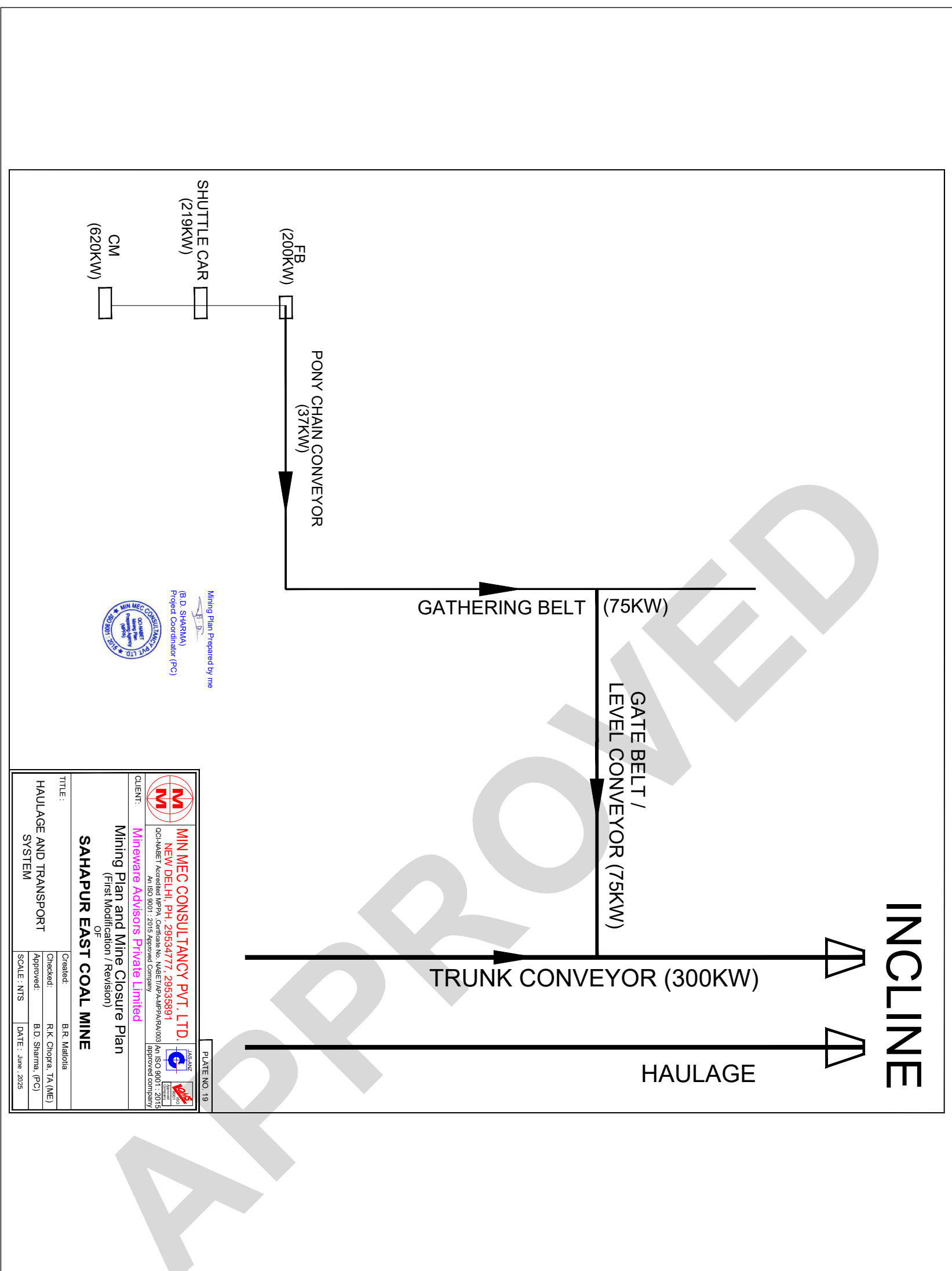
Section of A-A'

Mining Plan Prepared by me  
(B.D. SHARMA)  
Project Coordinator (PC)



		<b>MIN MEC CONSULTANCY PVT. LTD.</b> NEW DELHI, PH: 29534777, 29535891 KINISD 9001, 2015 (Approved Company)	
CLIENT: <b>Mineware Advisors Private Limited</b>		TITLE: <b>SUPPORT SYSTEM</b>	
PROJECT: <b>Mining Plan and Mine Closure Plan (First Modification / Revision) OF SAHAPUR EAST COAL MINE</b>		CHECKED: <b>R.K. Chopra, TA (ME)</b> APPROVED: <b>BD Sharma, (PC)</b> SCALE: 1 : 5000 DATE: June, 2025	
MIN MEC CONSULTANCY PVT. LTD. is an ISO 9001:2015 Certified Company.		PLATE NO. 18	

# UG Plate-19



Minng Plan Prepared by me  
B.D. SHARMA  
Project Coordinator (PC)



<p><b>MIN MEC CONSULTANCY PVT. LTD.</b> NEW DELHI, PH: 29534777, 29535891 OC-NABET Accredited MPPA, Certificate No. NABET/APA-MPPA/RA/003 An ISO 9001 : 2015 approved company</p>	
CLIENT:	<p><b>Mineware Advisors Private Limited</b> Mining Plan and Mine Closure Plan (First Modification / Revision) OF <b>SAHAPUR EAST COAL MINE</b></p>
TITLE:	HAULAGE AND TRANSPORT SYSTEM
Created:	B. R. Malhotra
Checked:	R. K. Chopra, TA (ME)
Approved:	B. D. Sharma, (PC)
SCALE:	NTS
DATE:	June, 2025



*Handwritten signature or initials.*