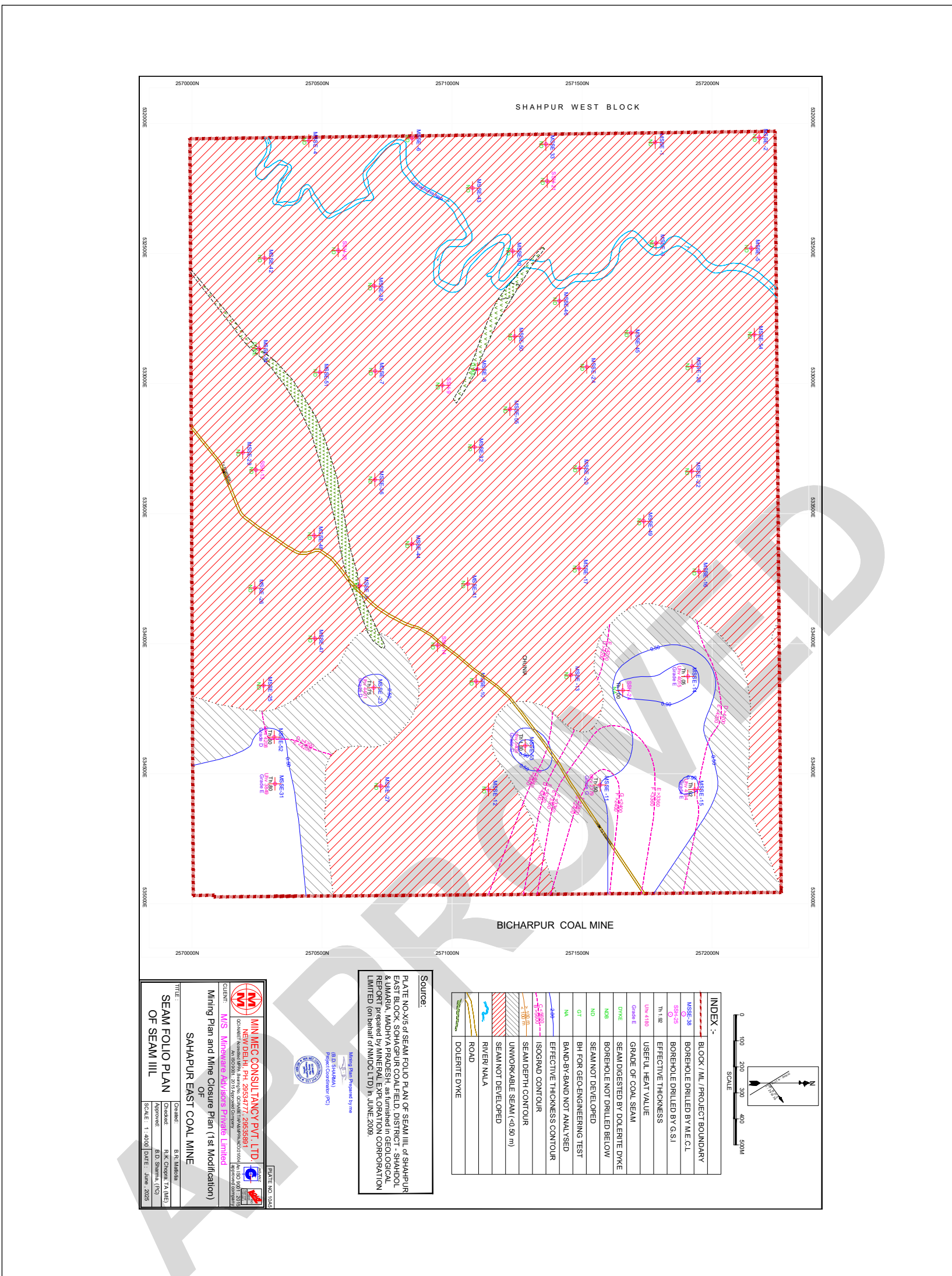






# Plan / Plate 10A6



**INDEX :-**

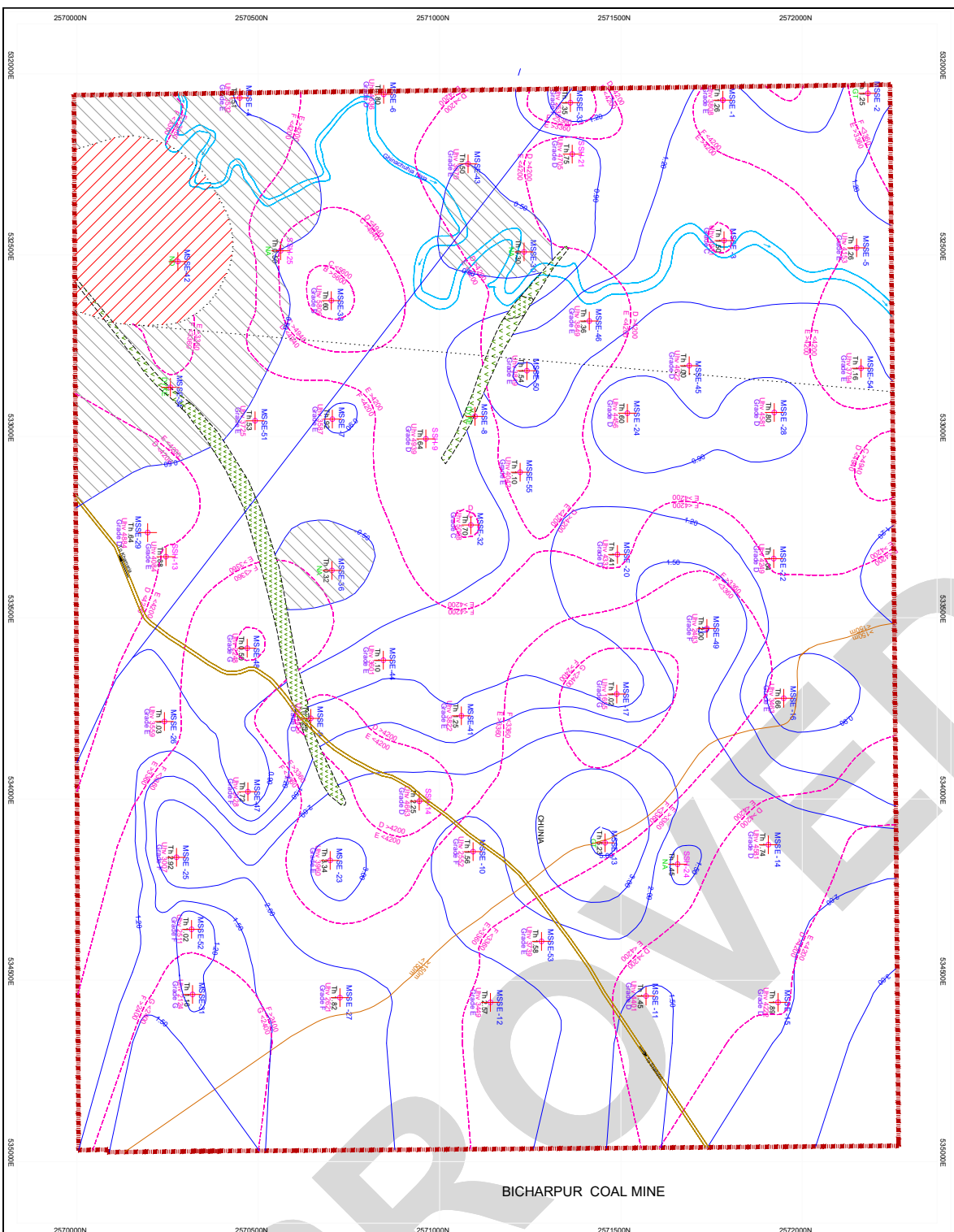
Block / ML / PROJECT BOUNDARY
Borehole Drilled by M.E.C.I.
Borehole Drilled by G.S.I.
Effective Thickness
Useful Heat Value
Grade of Coal Seam
Seam Digested by Dolerite Dyke
Borehole Not Drilled Below
Seam Not Developed
Bit for Geoengineering Test
Band-by-Band Not Analysed
Effective Thickness Contour
Isograd Contour
Seam Depth Contour
Unworkable Seam (<40 m)
Seam Not Developed
River / Nala
Road
Dolerite Dyke

**Source:**  
 PLATE NO.-X/5 OF SEAM FOLIO PLAN OF SEAM III, OF SHAHPUR EAST BLOCK, SHAHPUR COALFIELD, DISTRICT - SHARDOL & JUMARA, MADHYA PRADESH, AS FURNISHED IN GEOLOGICAL REPORT prepared by MINERAL EXPLORATION CORPORATION LIMITED (on behalf of MINCO LTD) IN JUNE 2009.

**MINMEC CONSULTANCY PVT. LTD.**  
 NEW DELHI, PH: 26594777, 26595881  
 CLIENT: **M/S. MINERAL EXPLORATION CORPORATION LIMITED**  
 Mining Plan and Mine Closure Plan (1st Modification) OF SHAHPUR EAST COAL MINE

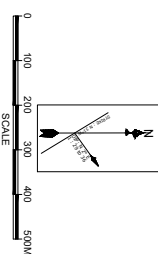
Prepared by: **B. S. Mishra**  
 Checked: **B. S. Mishra**  
 Approved: **B. S. Mishra, IAS (M)**  
 SCALE: 1:4000 | DATE: June 2025

# Plan / Plate 10A7



BICHARPUR COAL MINE

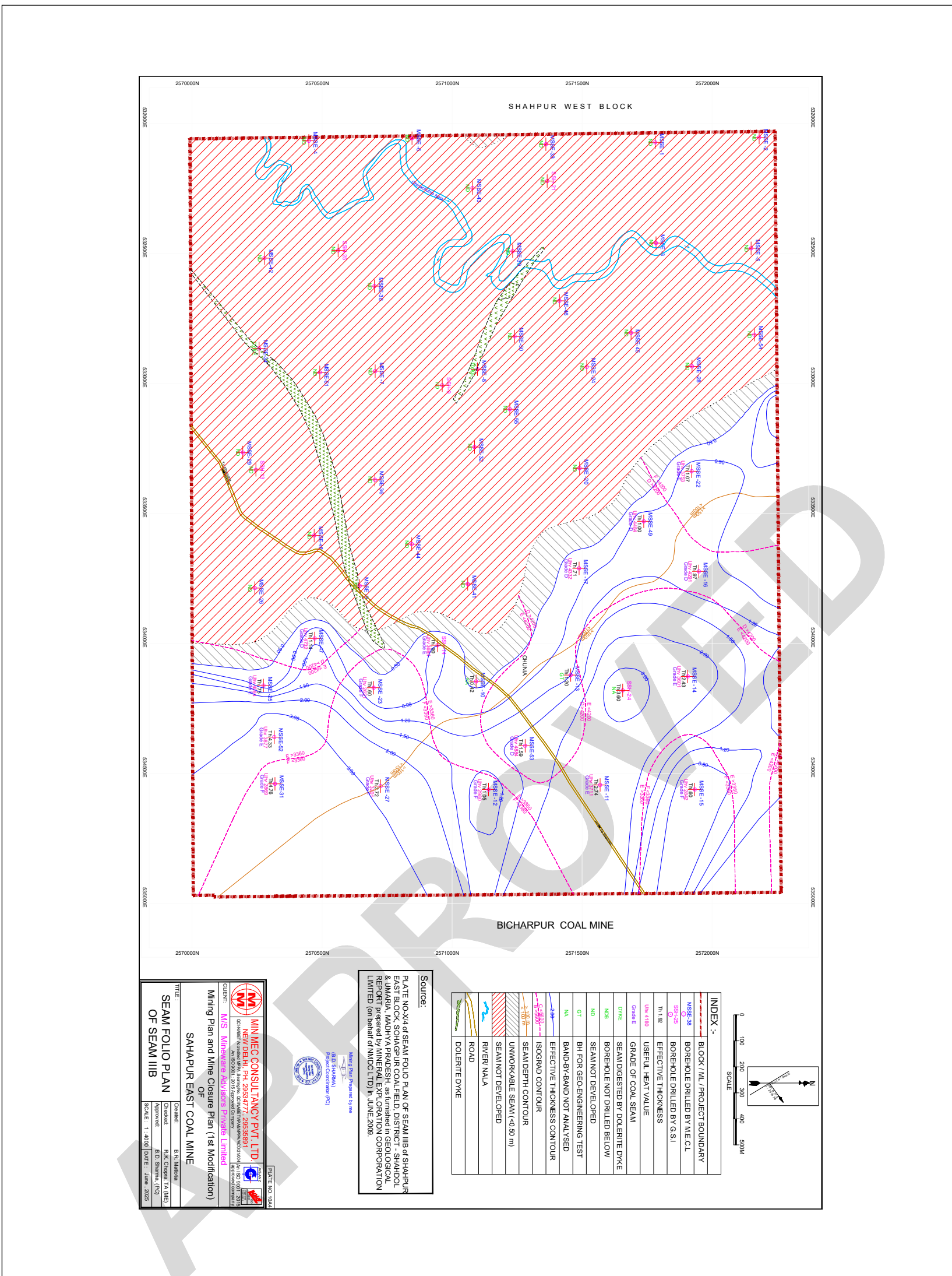
INDEX :-	
Block / ML / PROJECT BOUNDARY	MSSE-28
BOREHOLE DRILLED BY M.E.C.I.	MSSE-29
BOREHOLE DRILLED BY G.S.I	MSSE-30
EFFECTIVE THICKNESS	MSSE-31
USEFUL HEAT VALUE	MSSE-32
GRADE OF COAL SEAM	MSSE-33
SEAM DIGESTED BY DOLERITE DYKE	MSSE-34
BOREHOLE NOT DRILLED BELOW	MSSE-35
SEAM NOT DEVELOPED	MSSE-36
BH FOR GEOENGINEERING TEST	MSSE-37
BAND-BY-BAND NOT ANALYSED	MSSE-38
EFFECTIVE THICKNESS CONTOUR	MSSE-39
ISOGRADE CONTOUR	MSSE-40
SEAM DEPTH CONTOUR	MSSE-41
UNWORKABLE SEAM (<40 m)	MSSE-42
SEAM NOT DEVELOPED	MSSE-43
RIVER / MALA	MSSE-44
ROAD	MSSE-45
DOLERITE DYKE	MSSE-46



**Source:**  
 PLATE NO-X/3 OF SEAM FOLIO PLAN OF SEAM IIIA OF SHAHPUR EAST BLOCK, SOHAGPUR COALFIELD, DISTRICT - SHAHdol & JHARSUGUDA, MADHYA PRADESH, as furnished in GEOLOGICAL REPORT prepared by MINERAL EXPLORATION CORPORATION LIMITED (on behalf of MINCO LTD) in JUNE 2009.

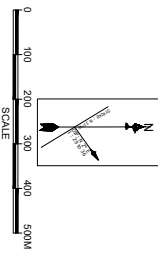
<p><b>MIN MEC CONSULTANCY PVT. LTD.</b>                  NEW DELHI, PH: 26554777, 26555661                  CHENNAI, PH: 26554777, 26555661                  COIMBATORE, PH: 26554777, 26555661</p>	<p><b>MMS Mining Services and Solutions Limited</b></p>	CLIENT:
		Mining Plan and Mine Closure Plan (1st Modification) OF SAHAPUR EAST COAL MINE
TITLE:	DRAWN BY:	CHECKED BY:
SEAM FOLIO PLAN OF SEAM IIIA	B. S. Mishra	R. K. Chandra, I.A. (M.E.)
SCALE: 1 : 4000	DATE: June 2009	APPROVED BY:
		B. D. Sharma, I(C)

# Plan / Plate 10A8



**INDEX :-**

Block / ML / PROJECT BOUNDARY
MISE-38 BOREHOLE DRILLED BY M.E.C.I.
MISE-25 BOREHOLE DRILLED BY G.S.I
TH 1.0E EFFECTIVE THICKNESS
USEFUL HEAT VALUE
GRADE OF COAL SEAM
SEAM DIGESTED BY DOLERITE DWKE
BOREHOLE NOT DRILLED BELOW
SEAM NOT DEVELOPED
BT FOR GEOENGINEERING TEST
BAND-BY-BAND NOT ANALYSED
EFFECTIVE THICKNESS CONTOUR
ISOGRADE CONTOUR
SEAM DEPTH CONTOUR
UNWORKABLE SEAM (<40 m)
SEAM NOT DEVELOPED
ROAD
RIVER / NALA
DOLERITE DWKE



**Source:**  
 PLATE NO. X/4 OF SEAM FOLIO PLAN OF SEAM IIIB OF SHAHPUR EAST BLOCK, SOHAGPUR COALFIELD, DISTRICT - SHAMDHOL & JUMARA, MADHYA PRADESH, AS FURNISHED IN GEOLOGICAL REPORT prepared by MINERAL EXPLORATION CORPORATION LIMITED (on behalf of MINCO LTD) IN JUNE 2009.

**MINMEC CONSULTANCY PVT. LTD.**  
 NEW DELHI, PH: 26544777, 26535581  
 CHANDIGARH OFFICE: PH: 26262200, 26262201  
 COIMBATORE OFFICE: PH: 23232323, 23232324  
 CLIENT: **M/S. MINERAL EXPLORATION CORPORATION LIMITED**

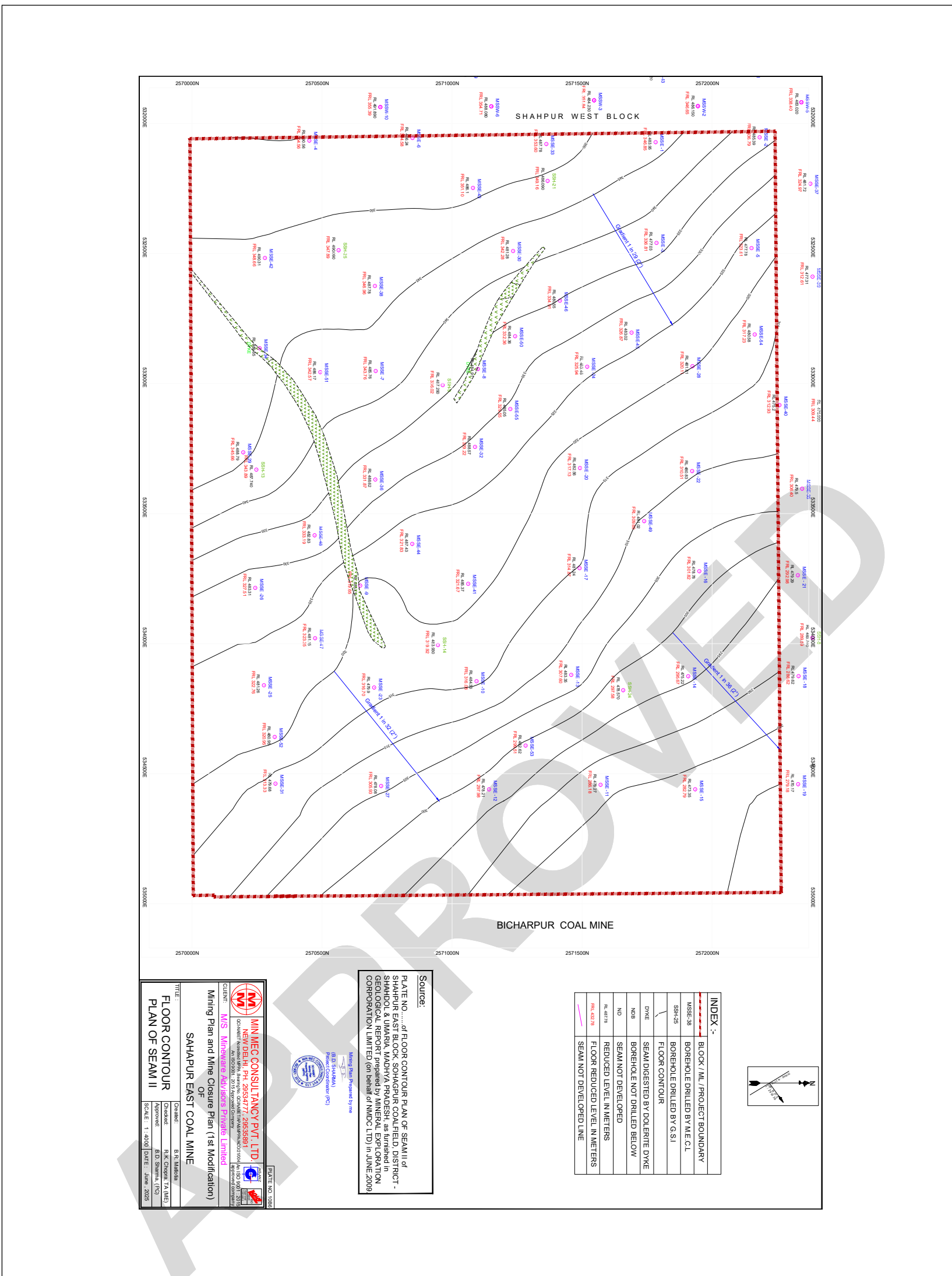
**MINING PLAN AND MINE CLOSURE PLAN (1st Modification) OF SAHAPUR EAST COAL MINE**

Prepared By: **B. S. Mishra**  
 Checked: **B. S. Mishra**  
 Approved: **B. S. Mishra, I.A. (M)**  
 SCALE: 1:4000 DATE: June 2025



*Handwritten signature/initials.*

# Plan / Plate 10B1



**INDEX :-**

Block / ML / PROJECT BOUNDARY
MISE-38 BOREHOLE DRILLED BY M.E.C.L.
SSH-25 BOREHOLE DRILLED BY G.S.I
FLOOR CONTOUR
DYKE SEAM DIGESTED BY DOLERITE DYKE
NDB BOREHOLE NOT DRILLED BELOW
NDB SEAM NOT DEVELOPED
NDB REDUCED LEVEL IN METERS
NDB FLOOR REDUCED LEVEL IN METERS
NDB SEAM NOT DEVELOPED LINE

**Source:**  
 PLATE NO. .... of FLOOR CONTOUR PLAN OF SEAM II of SHAHPUR EAST BLOCK, SOHAPUR COALFIELD, DISTRICT - SHAHDOL & UMARIA, MADHYA PRADESH, as furnished in GEOLOGICAL REPORT prepared by MINERAL EXPLORATION CORPORATION LIMITED (on behalf of MINMOC LTD) in JUNE 2009

**MINMEC CONSULTANCY PVT. LTD.**  
 NEW DELHI, PH: 26554777, 26555661  
 CHANDLER ROAD, SECTOR 17, GATEWAY INDIA, NEW DELHI - 110025

**Client:** M/S. MINERAL EXPLORATION CORPORATION LIMITED

**Project:** Mining Plan and Mine Closure Plan (1st Modification) OF SAHAPUR EAST COAL MINE

**Drawn by:** B. S. Mishra  
**Checked by:** R. K. Chandra, I.A. (M.E.)  
**Approved by:** B. D. Sharma, I.T.O.  
**Scale:** 1 : 4000  
**Date:** June, 2009

Plan / Plate 10B2

**PLATE-10B7**  
**FLOOR CONTOUR OF SEAM-I**

**NOT AVAILABLE IN  
THE GEOLOGICAL REPORT**

APPROVED

Plan / Plate 10B3

**PLATE-10B**  
**FLOOR CONTOUR OF SEAM-L1**

**NOT AVAILABLE IN  
THE GEOLOGICAL REPORT**

APPROVED