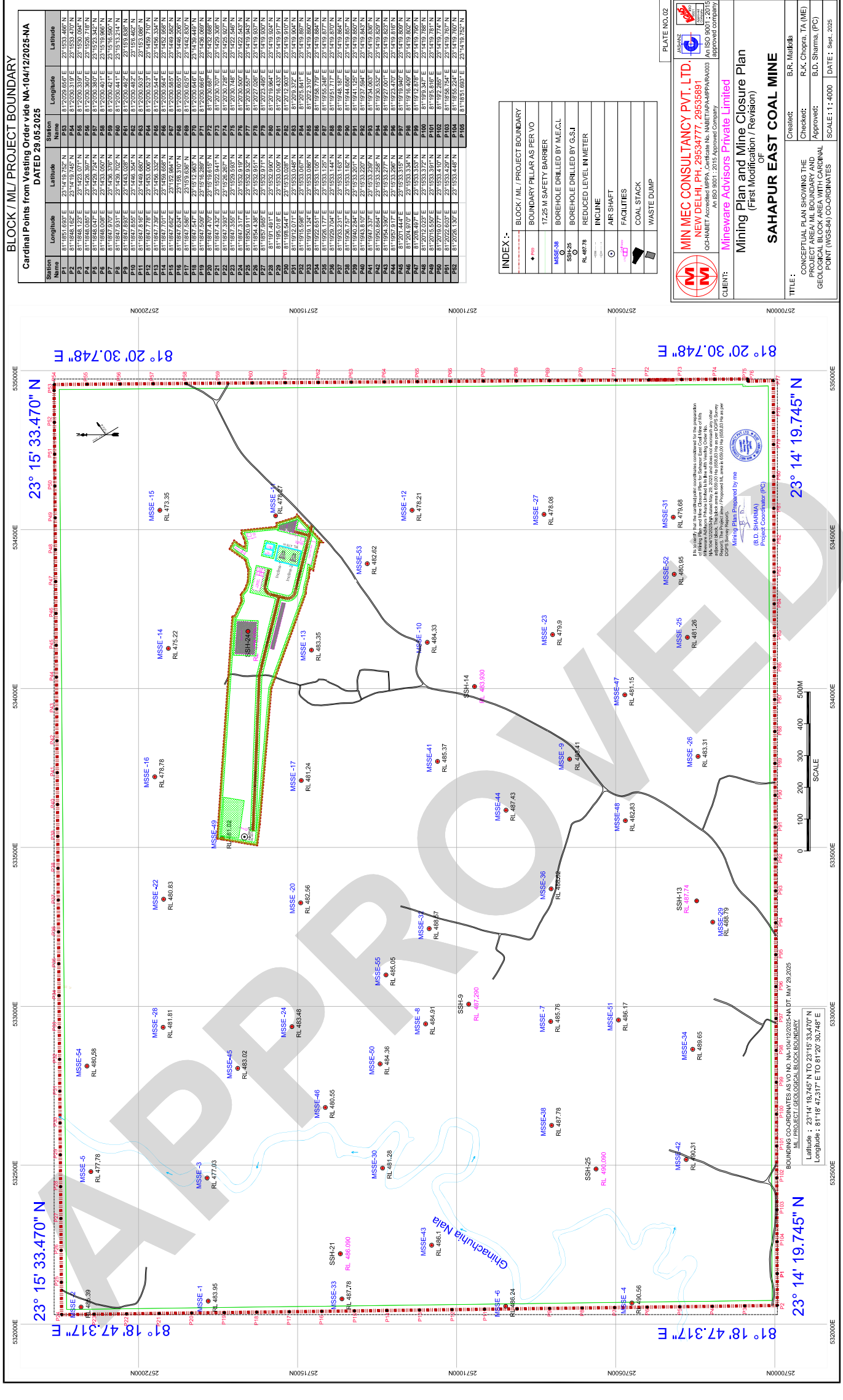


Plan / Plate 2A



BLOCK / ML / PROJECT BOUNDARY
Cardinal Points from Vesting Order vide NA-104/12/2025-NA DATED 29.05.2025

Station	Longitude	Latitude	Longitude	Latitude
P1	81°18'47.317\" E	23°15'33.470\" N	81°18'47.317\" E	23°15'33.470\" N
P2	81°18'48.167\" E	23°14'19.745\" N	81°18'48.167\" E	23°14'19.745\" N
P3	81°18'48.167\" E	23°14'19.745\" N	81°18'48.167\" E	23°14'19.745\" N
P4	81°18'48.167\" E	23°14'19.745\" N	81°18'48.167\" E	23°14'19.745\" N
P5	81°18'48.167\" E	23°14'19.745\" N	81°18'48.167\" E	23°14'19.745\" N
P6	81°18'48.167\" E	23°14'19.745\" N	81°18'48.167\" E	23°14'19.745\" N
P7	81°18'48.167\" E	23°14'19.745\" N	81°18'48.167\" E	23°14'19.745\" N
P8	81°18'48.167\" E	23°14'19.745\" N	81°18'48.167\" E	23°14'19.745\" N
P9	81°18'48.167\" E	23°14'19.745\" N	81°18'48.167\" E	23°14'19.745\" N
P10	81°18'48.167\" E	23°14'19.745\" N	81°18'48.167\" E	23°14'19.745\" N
P11	81°18'48.167\" E	23°14'19.745\" N	81°18'48.167\" E	23°14'19.745\" N
P12	81°18'48.167\" E	23°14'19.745\" N	81°18'48.167\" E	23°14'19.745\" N
P13	81°18'48.167\" E	23°14'19.745\" N	81°18'48.167\" E	23°14'19.745\" N
P14	81°18'48.167\" E	23°14'19.745\" N	81°18'48.167\" E	23°14'19.745\" N
P15	81°18'48.167\" E	23°14'19.745\" N	81°18'48.167\" E	23°14'19.745\" N
P16	81°18'48.167\" E	23°14'19.745\" N	81°18'48.167\" E	23°14'19.745\" N
P17	81°18'48.167\" E	23°14'19.745\" N	81°18'48.167\" E	23°14'19.745\" N
P18	81°18'48.167\" E	23°14'19.745\" N	81°18'48.167\" E	23°14'19.745\" N
P19	81°18'48.167\" E	23°14'19.745\" N	81°18'48.167\" E	23°14'19.745\" N
P20	81°18'48.167\" E	23°14'19.745\" N	81°18'48.167\" E	23°14'19.745\" N
P21	81°18'48.167\" E	23°14'19.745\" N	81°18'48.167\" E	23°14'19.745\" N
P22	81°18'48.167\" E	23°14'19.745\" N	81°18'48.167\" E	23°14'19.745\" N
P23	81°18'48.167\" E	23°14'19.745\" N	81°18'48.167\" E	23°14'19.745\" N
P24	81°18'48.167\" E	23°14'19.745\" N	81°18'48.167\" E	23°14'19.745\" N
P25	81°18'48.167\" E	23°14'19.745\" N	81°18'48.167\" E	23°14'19.745\" N
P26	81°18'48.167\" E	23°14'19.745\" N	81°18'48.167\" E	23°14'19.745\" N
P27	81°18'48.167\" E	23°14'19.745\" N	81°18'48.167\" E	23°14'19.745\" N
P28	81°18'48.167\" E	23°14'19.745\" N	81°18'48.167\" E	23°14'19.745\" N
P29	81°18'48.167\" E	23°14'19.745\" N	81°18'48.167\" E	23°14'19.745\" N
P30	81°18'48.167\" E	23°14'19.745\" N	81°18'48.167\" E	23°14'19.745\" N
P31	81°18'48.167\" E	23°14'19.745\" N	81°18'48.167\" E	23°14'19.745\" N
P32	81°18'48.167\" E	23°14'19.745\" N	81°18'48.167\" E	23°14'19.745\" N
P33	81°18'48.167\" E	23°14'19.745\" N	81°18'48.167\" E	23°14'19.745\" N
P34	81°18'48.167\" E	23°14'19.745\" N	81°18'48.167\" E	23°14'19.745\" N
P35	81°18'48.167\" E	23°14'19.745\" N	81°18'48.167\" E	23°14'19.745\" N
P36	81°18'48.167\" E	23°14'19.745\" N	81°18'48.167\" E	23°14'19.745\" N
P37	81°18'48.167\" E	23°14'19.745\" N	81°18'48.167\" E	23°14'19.745\" N
P38	81°18'48.167\" E	23°14'19.745\" N	81°18'48.167\" E	23°14'19.745\" N
P39	81°18'48.167\" E	23°14'19.745\" N	81°18'48.167\" E	23°14'19.745\" N
P40	81°18'48.167\" E	23°14'19.745\" N	81°18'48.167\" E	23°14'19.745\" N
P41	81°18'48.167\" E	23°14'19.745\" N	81°18'48.167\" E	23°14'19.745\" N
P42	81°18'48.167\" E	23°14'19.745\" N	81°18'48.167\" E	23°14'19.745\" N
P43	81°18'48.167\" E	23°14'19.745\" N	81°18'48.167\" E	23°14'19.745\" N
P44	81°18'48.167\" E	23°14'19.745\" N	81°18'48.167\" E	23°14'19.745\" N
P45	81°18'48.167\" E	23°14'19.745\" N	81°18'48.167\" E	23°14'19.745\" N
P46	81°18'48.167\" E	23°14'19.745\" N	81°18'48.167\" E	23°14'19.745\" N
P47	81°18'48.167\" E	23°14'19.745\" N	81°18'48.167\" E	23°14'19.745\" N
P48	81°18'48.167\" E	23°14'19.745\" N	81°18'48.167\" E	23°14'19.745\" N
P49	81°18'48.167\" E	23°14'19.745\" N	81°18'48.167\" E	23°14'19.745\" N
P50	81°18'48.167\" E	23°14'19.745\" N	81°18'48.167\" E	23°14'19.745\" N
P51	81°18'48.167\" E	23°14'19.745\" N	81°18'48.167\" E	23°14'19.745\" N
P52	81°18'48.167\" E	23°14'19.745\" N	81°18'48.167\" E	23°14'19.745\" N
P53	81°18'48.167\" E	23°14'19.745\" N	81°18'48.167\" E	23°14'19.745\" N
P54	81°18'48.167\" E	23°14'19.745\" N	81°18'48.167\" E	23°14'19.745\" N
P55	81°18'48.167\" E	23°14'19.745\" N	81°18'48.167\" E	23°14'19.745\" N
P56	81°18'48.167\" E	23°14'19.745\" N	81°18'48.167\" E	23°14'19.745\" N
P57	81°18'48.167\" E	23°14'19.745\" N	81°18'48.167\" E	23°14'19.745\" N
P58	81°18'48.167\" E	23°14'19.745\" N	81°18'48.167\" E	23°14'19.745\" N
P59	81°18'48.167\" E	23°14'19.745\" N	81°18'48.167\" E	23°14'19.745\" N
P60	81°18'48.167\" E	23°14'19.745\" N	81°18'48.167\" E	23°14'19.745\" N
P61	81°18'48.167\" E	23°14'19.745\" N	81°18'48.167\" E	23°14'19.745\" N
P62	81°18'48.167\" E	23°14'19.745\" N	81°18'48.167\" E	23°14'19.745\" N
P63	81°18'48.167\" E	23°14'19.745\" N	81°18'48.167\" E	23°14'19.745\" N
P64	81°18'48.167\" E	23°14'19.745\" N	81°18'48.167\" E	23°14'19.745\" N
P65	81°18'48.167\" E	23°14'19.745\" N	81°18'48.167\" E	23°14'19.745\" N
P66	81°18'48.167\" E	23°14'19.745\" N	81°18'48.167\" E	23°14'19.745\" N
P67	81°18'48.167\" E	23°14'19.745\" N	81°18'48.167\" E	23°14'19.745\" N
P68	81°18'48.167\" E	23°14'19.745\" N	81°18'48.167\" E	23°14'19.745\" N
P69	81°18'48.167\" E	23°14'19.745\" N	81°18'48.167\" E	23°14'19.745\" N
P70	81°18'48.167\" E	23°14'19.745\" N	81°18'48.167\" E	23°14'19.745\" N
P71	81°18'48.167\" E	23°14'19.745\" N	81°18'48.167\" E	23°14'19.745\" N
P72	81°18'48.167\" E	23°14'19.745\" N	81°18'48.167\" E	23°14'19.745\" N
P73	81°18'48.167\" E	23°14'19.745\" N	81°18'48.167\" E	23°14'19.745\" N
P74	81°18'48.167\" E	23°14'19.745\" N	81°18'48.167\" E	23°14'19.745\" N
P75	81°18'48.167\" E	23°14'19.745\" N	81°18'48.167\" E	23°14'19.745\" N
P76	81°18'48.167\" E	23°14'19.745\" N	81°18'48.167\" E	23°14'19.745\" N
P77	81°18'48.167\" E	23°14'19.745\" N	81°18'48.167\" E	23°14'19.745\" N
P78	81°18'48.167\" E	23°14'19.745\" N	81°18'48.167\" E	23°14'19.745\" N
P79	81°18'48.167\" E	23°14'19.745\" N	81°18'48.167\" E	23°14'19.745\" N
P80	81°18'48.167\" E	23°14'19.745\" N	81°18'48.167\" E	23°14'19.745\" N
P81	81°18'48.167\" E	23°14'19.745\" N	81°18'48.167\" E	23°14'19.745\" N
P82	81°18'48.167\" E	23°14'19.745\" N	81°18'48.167\" E	23°14'19.745\" N
P83	81°18'48.167\" E	23°14'19.745\" N	81°18'48.167\" E	23°14'19.745\" N
P84	81°18'48.167\" E	23°14'19.745\" N	81°18'48.167\" E	23°14'19.745\" N
P85	81°18'48.167\" E	23°14'19.745\" N	81°18'48.167\" E	23°14'19.745\" N
P86	81°18'48.167\" E	23°14'19.745\" N	81°18'48.167\" E	23°14'19.745\" N
P87	81°18'48.167\" E	23°14'19.745\" N	81°18'48.167\" E	23°14'19.745\" N
P88	81°18'48.167\" E	23°14'19.745\" N	81°18'48.167\" E	23°14'19.745\" N
P89	81°18'48.167\" E	23°14'19.745\" N	81°18'48.167\" E	23°14'19.745\" N
P90	81°18'48.167\" E	23°14'19.745\" N	81°18'48.167\" E	23°14'19.745\" N
P91	81°18'48.167\" E	23°14'19.745\" N	81°18'48.167\" E	23°14'19.745\" N
P92	81°18'48.167\" E	23°14'19.745\" N	81°18'48.167\" E	23°14'19.745\" N
P93	81°18'48.167\" E	23°14'19.745\" N	81°18'48.167\" E	23°14'19.745\" N
P94	81°18'48.167\" E	23°14'19.745\" N	81°18'48.167\" E	23°14'19.745\" N
P95	81°18'48.167\" E	23°14'19.745\" N	81°18'48.167\" E	23°14'19.745\" N
P96	81°18'48.167\" E	23°14'19.745\" N	81°18'48.167\" E	23°14'19.745\" N
P97	81°18'48.167\" E	23°14'19.745\" N	81°18'48.167\" E	23°14'19.745\" N
P98	81°18'48.167\" E	23°14'19.745\" N	81°18'48.167\" E	23°14'19.745\" N
P99	81°18'48.167\" E	23°14'19.745\" N	81°18'48.167\" E	23°14'19.745\" N
P100	81°18'48.167\" E	23°14'19.745\" N	81°18'48.167\" E	23°14'19.745\" N

INDEX :-

- BOUNDARY PILLAR AS PER VO
- 17.25 M SAFETY BARRIER
- BOREHOLE DRILLED BY M.E.C.L
- BOREHOLE DRILLED BY G.S.I
- REDUCED LEVEL IN METER
- INCLINE
- AIR SHAFT
- FACILITIES
- COAL STACK
- WASTE DUMP

MIN MEC CONSULTANCY PVT. LTD.
 NEW DELHI, PH. 29534777; 29535891
 (GCHAMET Accredited MPPA, Certificate No. INMETAP/PP/003 (An ISO 9001:2015 Approved Company))

Minmec Advisors Private Limited
 Mining Plan and Mine Closure Plan
 (First Modification / Revision)
SAHAPUR EAST COAL MINE

CLIENT: SAHAPUR EAST COAL MINE

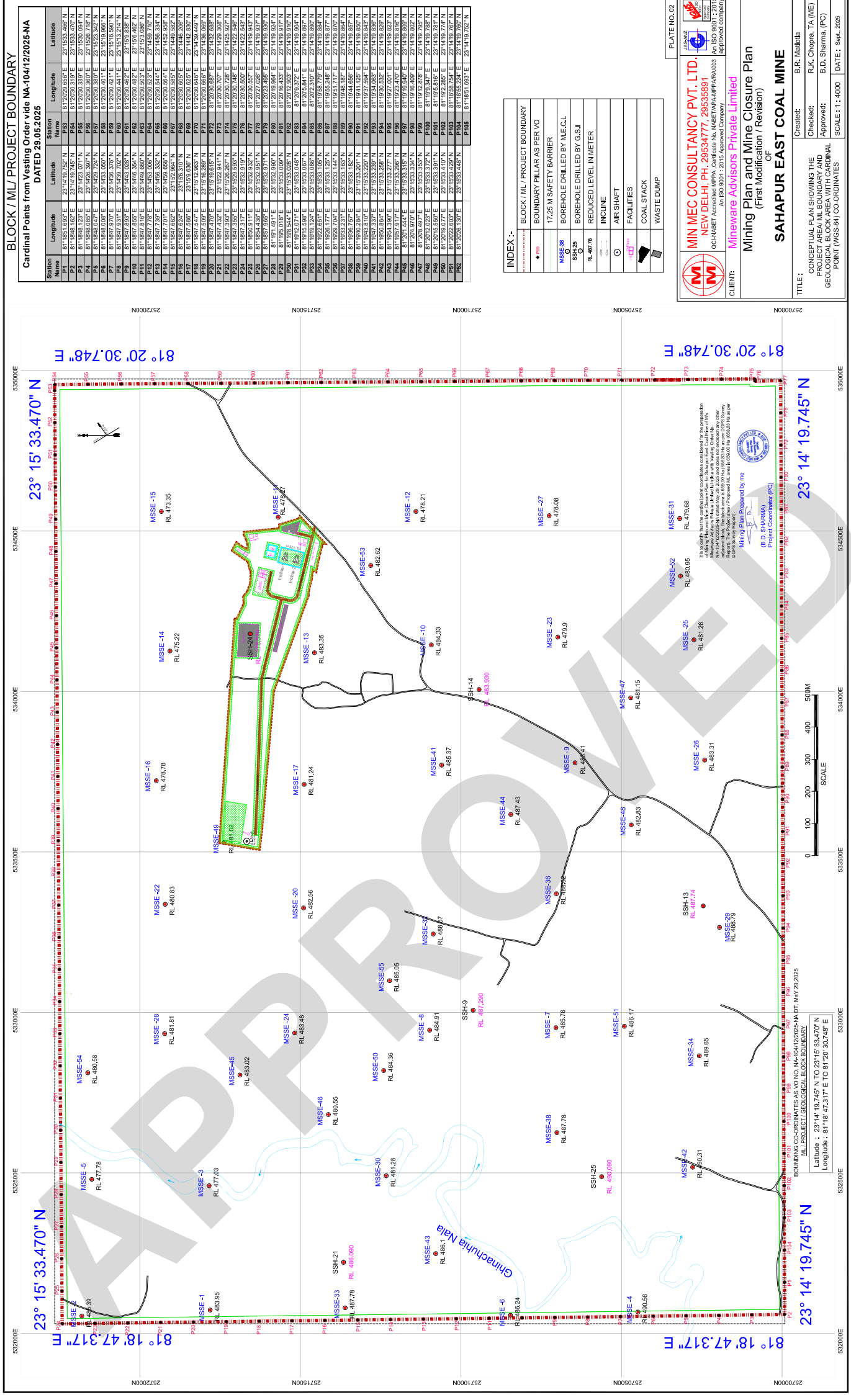
CREATED: B.R. Malhotra
CHECKED: R.K. Chopra, TA (ME)
APPROVED: B.D. Sharma, (PC)
SCALE: 1:1-4000 | **DATE:** Sept. 2025

TITLE: CONCEPTUAL PLAN SHOWING THE PROJECT AREA I.M. BOUNDARY AND GEOLOGICAL BOUNDARY WITH ORIGINAL POINT (MSS-54)-CO-ORDINATES



Handwritten signature or initials.

Plan / Plate 2B



INDEX :-

- Block / ML / Project Boundary
- Boundary Pillar as per VO
- 17.25 M Safety Barrier
- Borehole Drilled by M.E.C.L
- Borehole Drilled by G.S.I
- Reduced Level in Meter
- Incline
- Air Shaft
- Facilities
- Coal Stack
- Waste Dump

MIN MEC CONSULTANCY PVT. LTD.
NEW DELHI, PH. 29534777, 29535891
GCHMBET Accredited MPPA, Certificate No. INMBETAP/PP/MA/003 (An ISO 9001:2015 Approved Company)

Mineware Advisors Private Limited
Mining Plan and Mine Closure Plan
(First Modification / Revision)

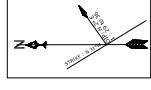
SAHAPUR EAST COAL MINE

Client: B.R. Malhotra
Checked: R.K. Chopra, TA (ME)
Approved: B.D. Sharma, (PC)
Scale: 1:1:4000 | Date: Sept. 2025



Handwritten signature or initials.

Plan / Plate 3A (Lease Area)

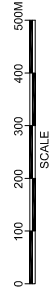
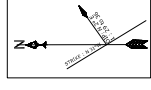


ML BOUNDARY

Latitude : 23°14' 19.745" N TO 23°15' 33.470" N
 Longitude : 81°18' 47.317" E TO 81°20' 30.748" E


MIN MEC CONSULTANCY PVT. LTD. NEW DELHI, PH. 29534777, 29535991 OCP-NABET Accredited (MPPA, Certificate No. NABET/MP/MP/A/0033) An ISO 9001:2015 Approved Company.	
CLIENT: Mineaware Advisors Private Limited Mining Plan and Mine Closure Plan (First Modification / Revision)	
TITLE: SAHAPUR EAST COAL MINE MINING LEASE KML BOUNDARY IN THE GOOGLE IMAGE	
Create: B.R. Mishra Check: R.K. Choudhary, T.A. (ME) Approve: B.D. Sharma, (PC)	SCALE: 1 : 5,000 DATE: June, 2025

Plan / Plate 3B (Project Area)

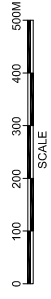
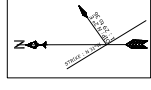
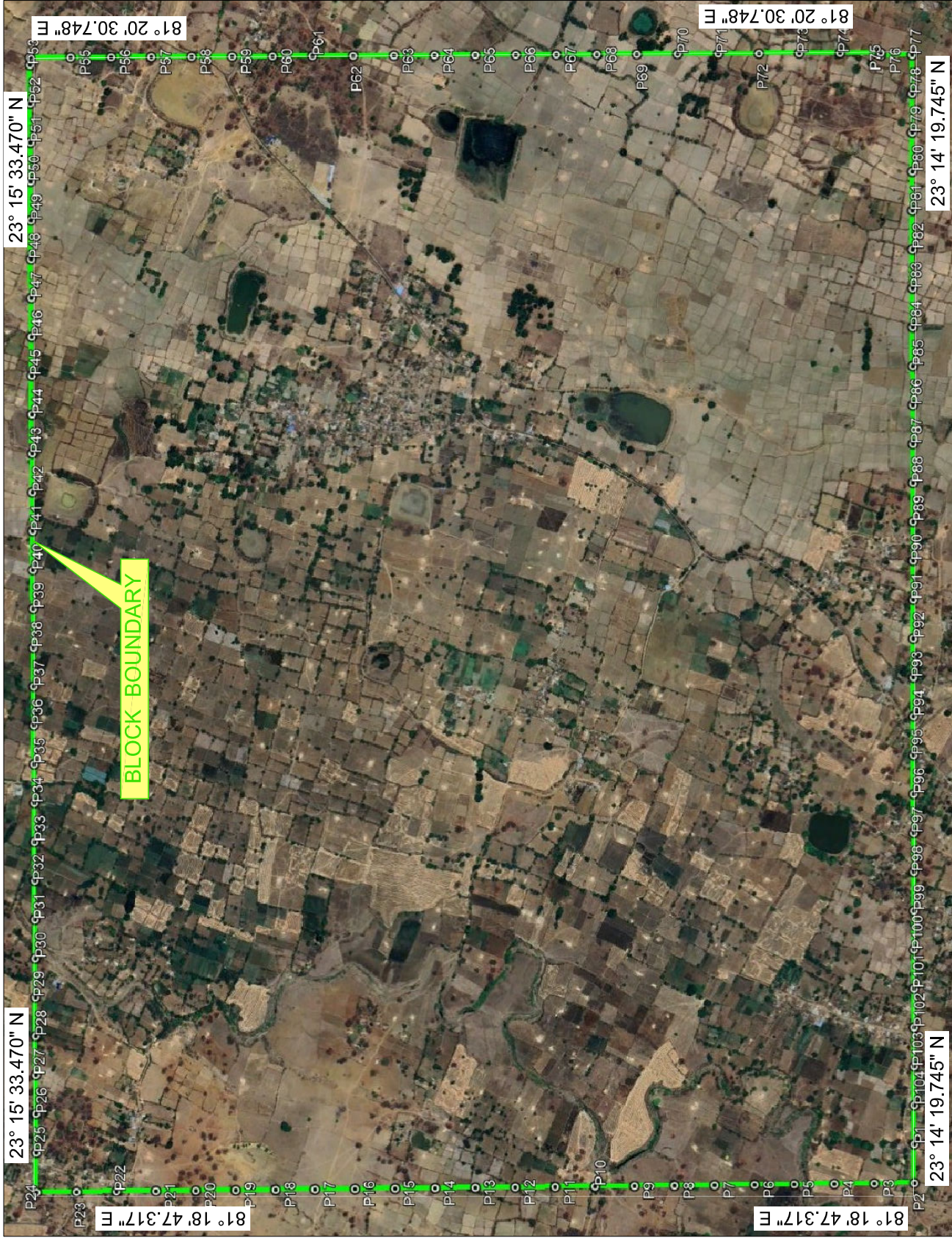


PROJECT BOUNDARY

Latitude : 23°14' 19.745" N TO 23°15' 33.470" N
 Longitude : 81°18' 47.317" E TO 81°20' 30.748" E

 MIN MEC CONSULTANCY PVT. LTD. NEW DELHI, PH. 29534777, 29535891 OCP-NM&ET Accredited (MPPA, Certificate No. NM&ET/AN/MP/PA/0033) An ISO 9001:2015 Approved Company CLIENT: Mineaware Advisors Private Limited	
Mining Plan and Mine Closure Plan (First Modification / Revision)	
SAHAPUR EAST COAL MINE	
TITLE: PROJECT KML BOUNDARY IN THE GOOGLE IMAGE	Create: B.R. Mishra Check: R.K. Choudhary, T.A. (ME) Approve: B.D. Sharma, (PC)
SCALE: 1 : 5,000 DATE : June, 2025	

Plan / Plate 3C (Geological Block)

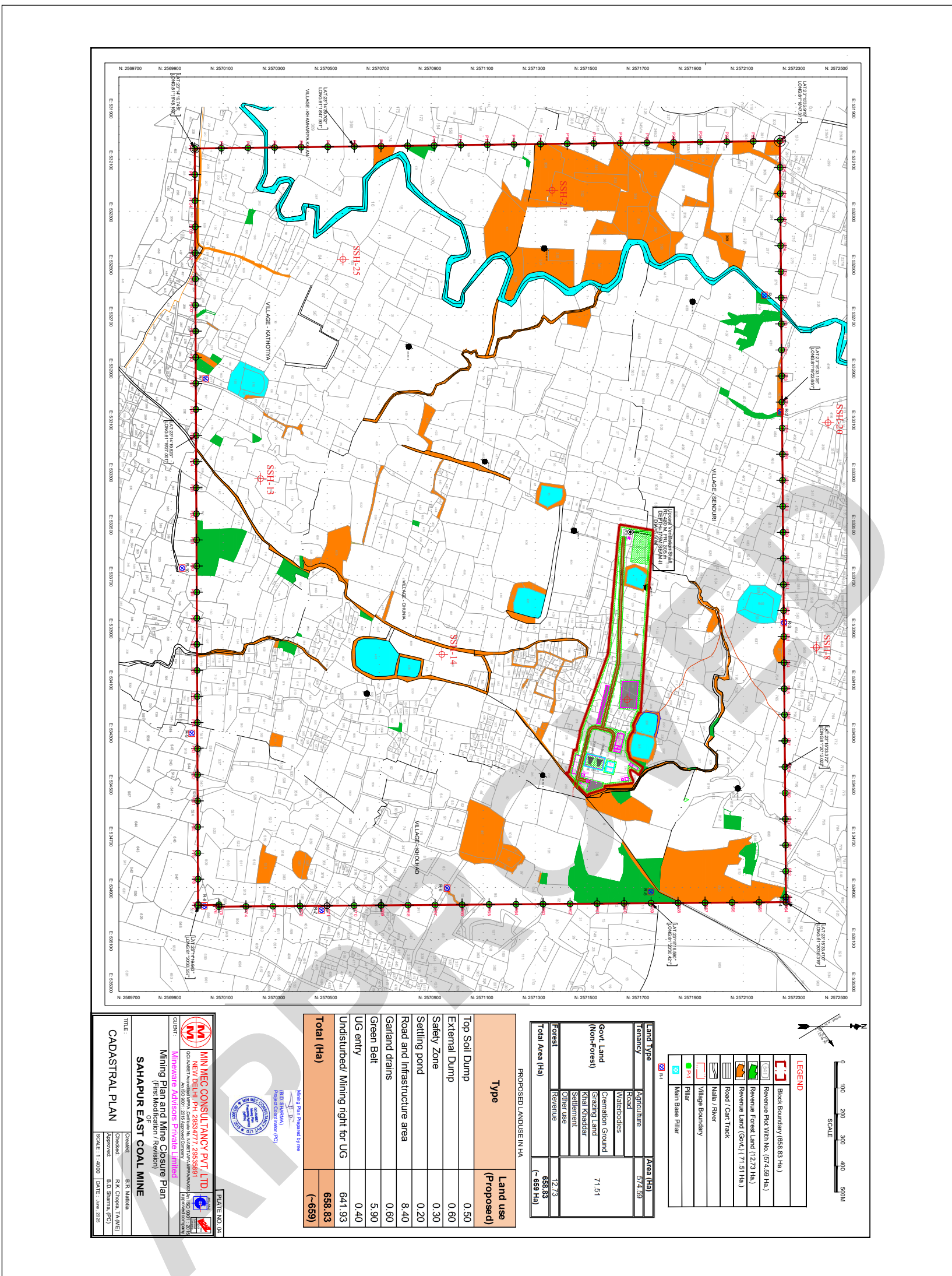


BOUNDING CO-ORDINATES AS VO NO. NA-104/12/2025-NA
DT. May 29, 2025
BLOCK BOUNDARY

Latitude : 23°14' 19.745" N TO 23°15' 33.470" N
Longitude : 81°18' 47.317" E TO 81°20' 30.748" E

<p>MIN MEC CONSULTANCY PVT. LTD. NEW DELHI, PH. 29534777, 29535991 OCP-NM&ET Accredited (MPPA, Certificate No. NM&ET/APP/PA/003) An ISO 9001:2015 Approved Company</p>	
<p>CLIENT: Mineaware Advisors Private Limited</p>	
<p>TITLE: Mining Plan and Mine Closure Plan (First Modification / Revision)</p>	
<p>SAHAPUR EAST COAL MINE</p>	
<p>Created: B.R. Mishra</p>	<p>Checked: R.K. Choudh. TA (ME)</p>
<p>Approved: B.D. Sharma, (PC)</p>	<p>SCALE: 1 : 5,000 DATE: June, 2025</p>

Plan / Plate 4



LEGEND

[Red dashed line]	Block Boundary (658.83 Ha.)
[Green area]	Revenue For W/M No. (374.89 Ha.)
[Cyan area]	Revenue Forest Land (12.73 Ha.)
[Orange area]	Revenue Land (Govt.) (71.51 Ha.)
[Black line]	Road / Cart Track
[Blue line]	Nalla / River
[Red line]	Village Boundary
[Green line]	Phir
[Red line]	Main Base Pillar

Land Type

Category	Area (Ha)
Agriculture	374.89
Govt Land (Non-Forest)	71.51
Forest	12.73
Total Area (Ha)	658.83

PROPOSED LANDUSE/NHA

Type	Land use (Proposed)
Top Soil Dump	0.50
External Dump	0.60
Safety Zone	0.30
Settling pond	0.20
Road and Infrastructure area	8.40
Garland drains	0.60
Green Belt	5.90
UG entry	0.40
Undisturbed/ Mining right for UG	641.93
Total (Ha)	658.83

MIN MEC CONSULTANCY PVT. LTD.
 NEW DELHI, PIN 205017, 205001
 (C/O) NEST TOWER, 10TH FLOOR, NEST TOWER, KANUNGI, DELHI-110028

CLIENT: Mining and Minerals Development Corporation Limited
PROJECT: Mining Plan and Map Closure Plan of SAHAPUR EAST COAL MINE

TITLE: CADASTRAL PLAN

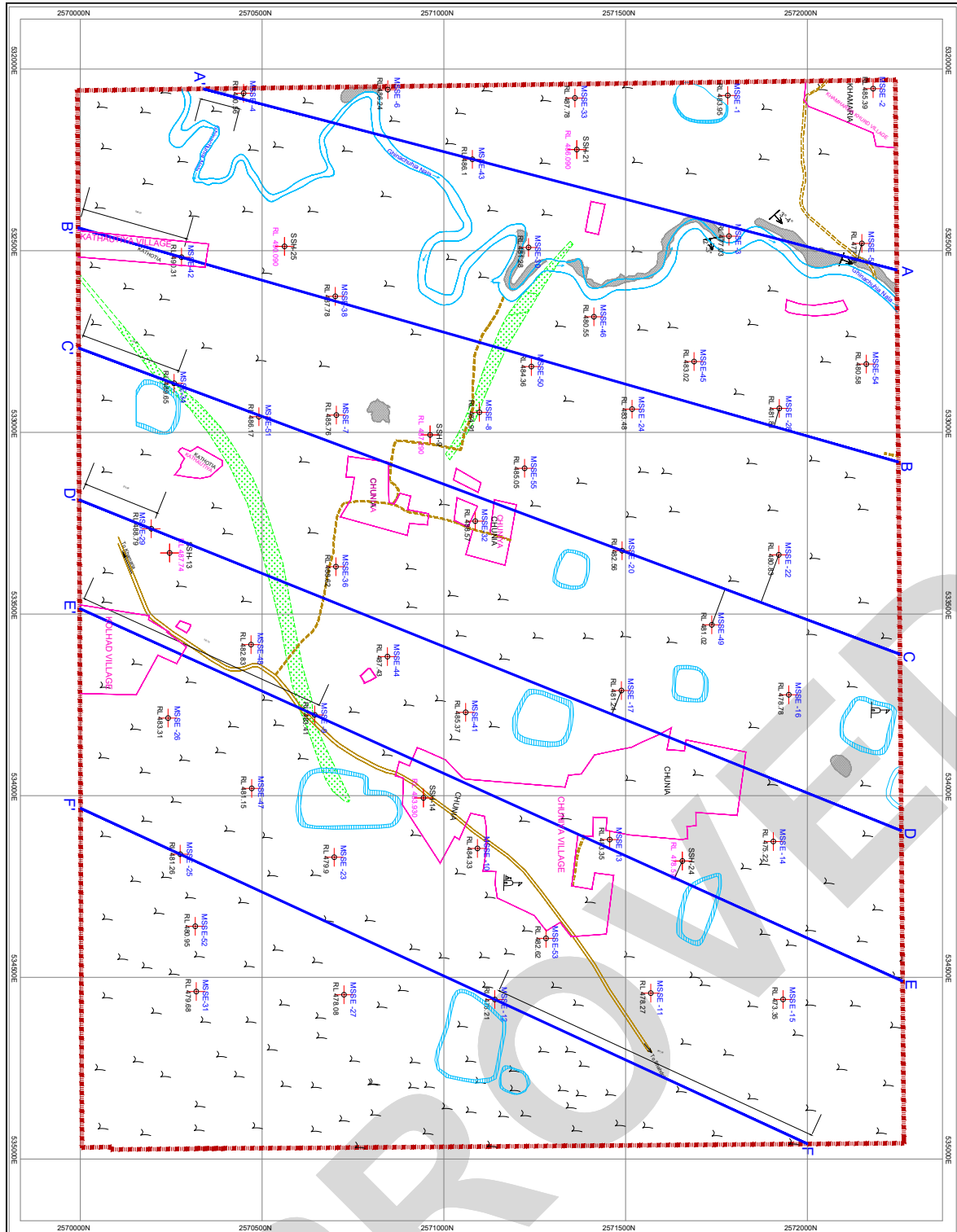
SCALE: 1 : 4000 | **DATE:** June 2025

PLATE NO. 04



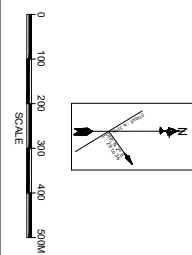
APC

Plan / Plate 5A1



INDEX :-

	BLOCK / M/L PROJECT BOUNDARY
	STRIKE & DIP DIRECTION
	BORERHOLE DRILLED BY M/EC/L
	BORERHOLE DRILLED BY G.S.I
	REDUCED LEVEL IN METER
	WATER BODY
	TEMPLE
	GEOLOGICAL CROSS SECTION LINE
	RIVER / NALA
	VILLAGE
	ROAD
	DOLERITE DYKE
	SOIL SANDY
	BARREN MEASURE SANDSTONE OUTCROPS



Source:
 PLATE NO.11 of GEOLOGICAL MAP of SAHAPUR EAST BLOCK, SOHAGPUR COALFIELD DISTRICT - SHAHDOL & UMARIA, MADHYA PRADESH, as furnished in GEOLOGICAL REPORT prepared by MINERAL EXPLORATION CORPORATION LIMITED (on behalf of NMDC LTD) in JUNE 2009.



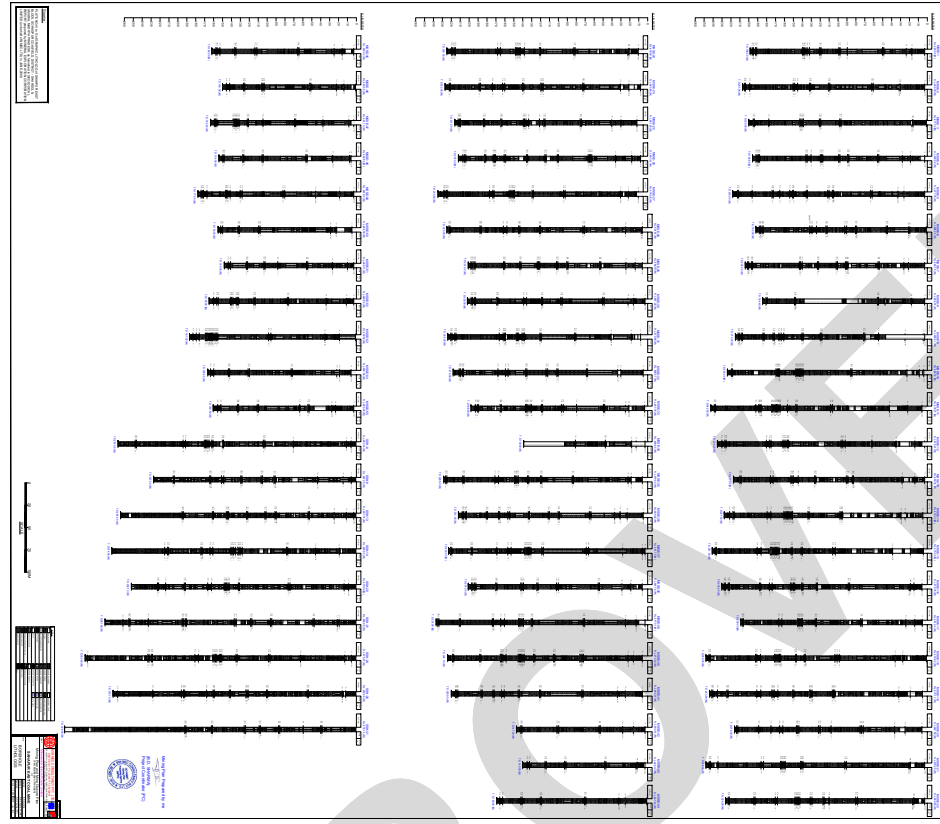
MIN MEC CONSULTANCY PVT. LTD.
 NEW DELHI, PH. 26534777, 26535881
 (COMPANIES) Regd. Office: 101, Connaught Place, New Delhi-110028
 (INDIA) Regd. Office: 101, Connaught Place, New Delhi-110028
 (INDIA) Regd. Office: 101, Connaught Place, New Delhi-110028

Client: **Minerals Advisers Private Limited**
 (First Modification / Revision)
Sahapur East Coal Mine

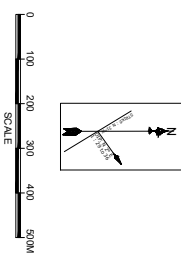
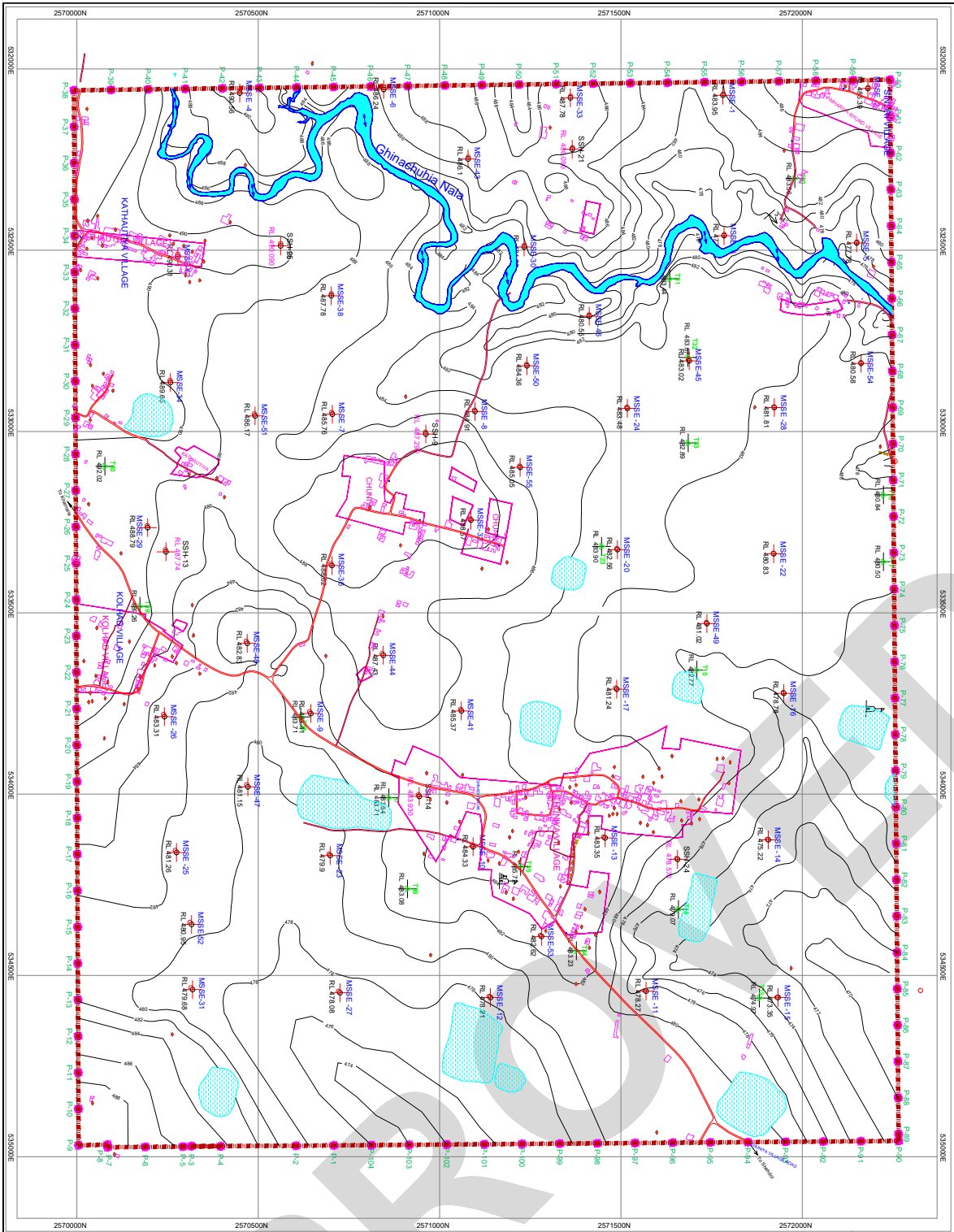
Project: Mining Plan and Mine Closure Plan

Author: B.R. Mishra
Checked: R.K. Sharma, T.A.M.E.
Approved: B.D. Sharma, P.C.
Scale: 1 : 4000 **Date:** June 2025

Plan / Plate 6A1



Plan / Plate 7



INDEX :-	
	BLOCK / ML / PROJECT BOUNDARY
	STRIKE & DIP DIRECTION
	SURFACE CONTOUR
	TRAVERSE STATIONS WITH RL (M)
	BOREHOLE DRILLED BY M.C.L.
	BOREHOLE DRILLED BY G.S.I.
	REDUCED LEVEL IN METER
	WATER BODY
	TEMPLE
	RIVER / NALA
	VILLAGE
	METALLED ROAD
	UNMETALLED ROAD

Source:
 B.R. No. 2 of 1995 (SPECIAL PLAN) SAHAPUR EAST
 BLOCK, SONMURGA COMPLETION DISTRICT - SHARDOLA &
 UNMETALLED ROAD, SAHAPUR EAST COAL MINE, SAHAPUR
 LIMITED (for benefit of MINCO LTD. in JUNE 2009 AND BY
 MAHESHWARI MINING PRIVATE LIMITED)



 MIN MEC CONSULTANCY PVT. LTD. NEW DELHI, PH. 26534777, 26535881 (COMPANIES) Registered Office, Corporate No. UAD179AAAP0190001 An ISO 9001:2015 (INDIA) Registered Office, Corporate No. UAD179AAAP0190001 An ISO 9001:2015 (INDIA) Registered Office, Corporate No. UAD179AAAP0190001 An ISO 9001:2015	CLIENT: Minerals Advisory Private Limited Mining Plan and Mine Closure Plan (First Modification / Revision) SAHAPUR EAST COAL MINE
	TITLE: SURFACE PLAN
Created: B.R. Malviya Checked: R.K. Sharma, (I.A.E.) Approved: B.D. Sharma, (I.A.E.) SCALE: 1 : 4000 DATE: June 2025	PLATE NO. 07



Handwritten signature or initials.