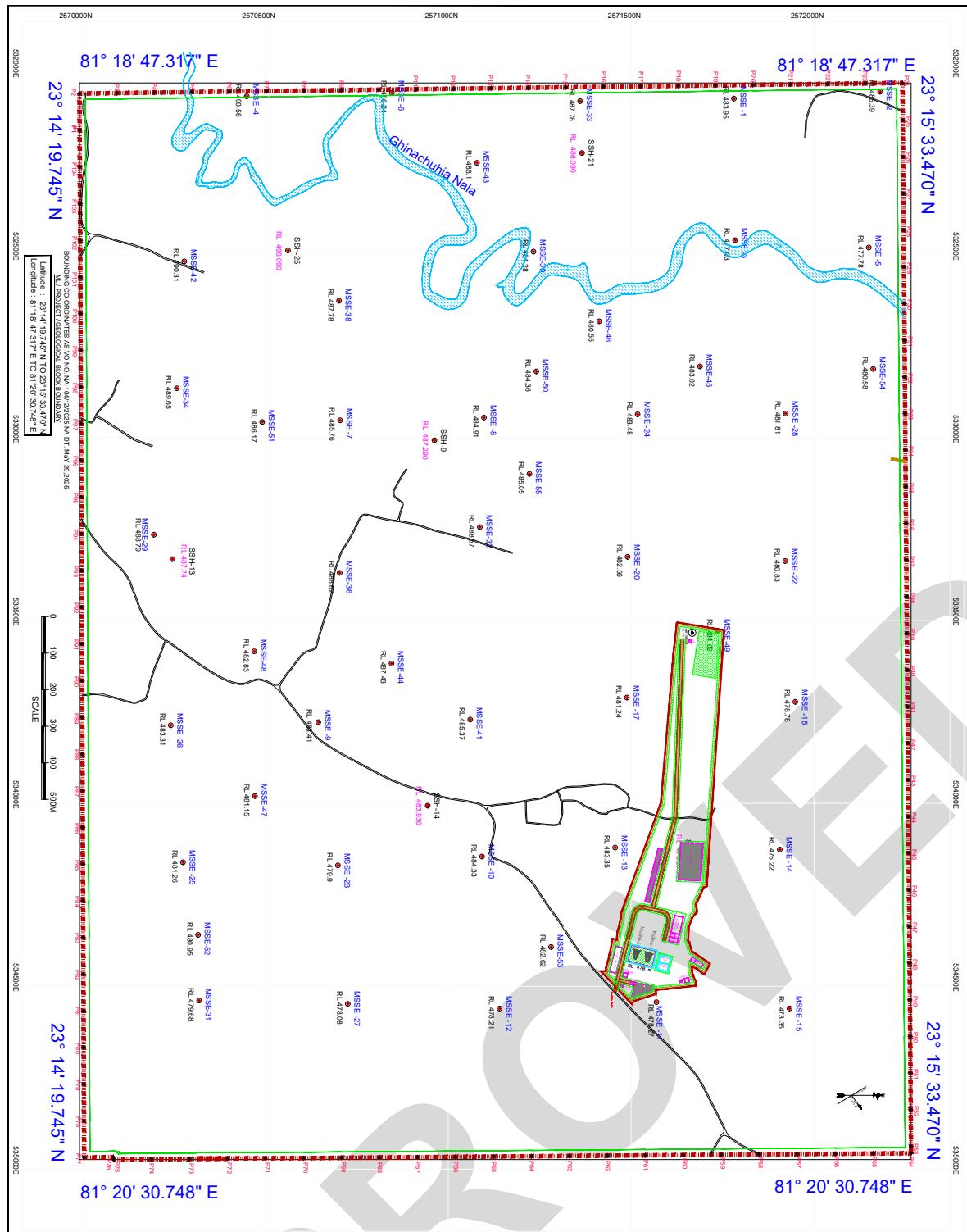


Plan / Plate 8



Cardinal Points from Vastling Order vide NA-104/12/2025-NA
DATED 29.05.2025

Station	Longitude	Latitude	Station	Longitude	Latitude
P1	81° 18' 47.317\"/>				

INDEX :-

- BOUNDARY / PROJECT BOUNDARY
- BOUNDARY PLAN AS PER VO
- 17.20 M SAFETY DAMBER
- ROUNDOFF DRILLED BY G.S.I
- REDUCED LEVEL IN METER
- INCLINE
- AIR SHAFET
- FACILITIES
- COAL STACK
- WASTE DUMP

Mining Plan Prepared by me
(B.D. Sharma)
Project Consultant (PC)

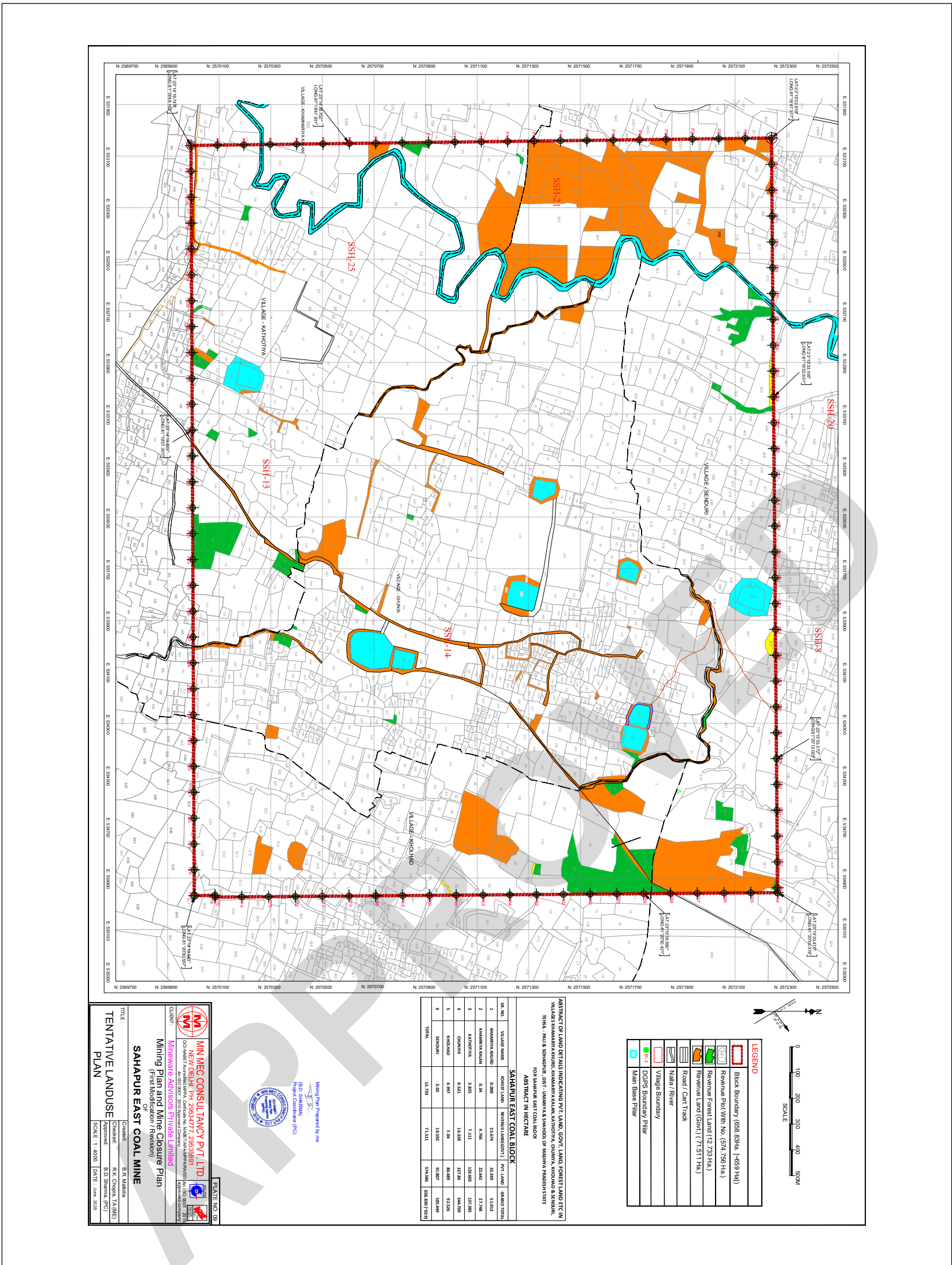
MIN MEC CONSULTANCY PVT. LTD.
NEW DELHI, PH: 26534777, 26535881
CORPORATE: Kirti Vihar, Connaught Place, New Delhi-110028
MINERALS ADVISORS PRIVATE LIMITED
Approved Consultant

SAHAAPUR EAST COAL MINE
Mining Plan and Mine Closure Plan
(First Modification / Revision)

CONCEPTUAL PLAN

Checked: B.R. Mishra
Approved: R.K. Sharma (A.M.E.)
B.D. Sharma (PC)
SCALE: 1 : 4000 DATE: June 2025

Plan / Plate 9



LEGEND

- Block Boundary (688.83Ha. [-659 Ha])
- Revenue Ppt With No. (674.756 Ha.)
- Revenue Forest Land (12.733 Ha.)
- Revenue Land (Govt.) (71.511 Ha.)
- Road / Cart Track
- Nalla / River
- Village Boundary
- DGPS Boundary Pillar
- Main State Pillar

0 100 200 300 400 500M
SCALE

ABSTRACT OF LAND DETAILS INDICATING PVT. LAND, GOVT. LAND, FOREST LAND ETC IN VILLAGES SHAMARVA KARNI, KHAMARVA KARNI, KATHNORIA, CHAKRA, SONDHRI & SONDHRI, TRIG - MAU, SONDHRI, DOST - UDHARVA SONDHRI OR MADHVA PRADHANSI VATE

ABSTRACT IN HECTARE

SAHAPUR EAST COAL BLOCK

Sr. No.	Village Name	Revenue Land	Revenue Land (Govt.)	Pvt. Land	Forest Land	Grand Total
1	SHAMARVA KARNI	0.800	2.834	23.840	13.013	40.487
2	KHAMARVA KARNI	0.341	4.396	23.840	17.748	46.325
3	KATHNORIA	3.823	7.111	12.662	37.248	56.844
4	CHAKRA	0.211	16.246	27.246	13.232	57.035
5	SONDHRI	4.297	7.241	8.829	13.232	33.600
6	SONDHRI	3.249	10.832	16.247	13.232	43.560
TOTAL		12.733	71.511	124.966	108.800 (79%)	318.010

MIN MEC CONSULTANCY PVT. LTD.
 Mining Plan and Mine Closure Plan
 (First Model / Revision)
SAHAPUR EAST COAL MINE
 TENTATIVE LANDUSE PLAN

Client: **Maharaja Advisory Private Limited**
 Approved: **E. S. Madhavi**
 Date: **June 2025**

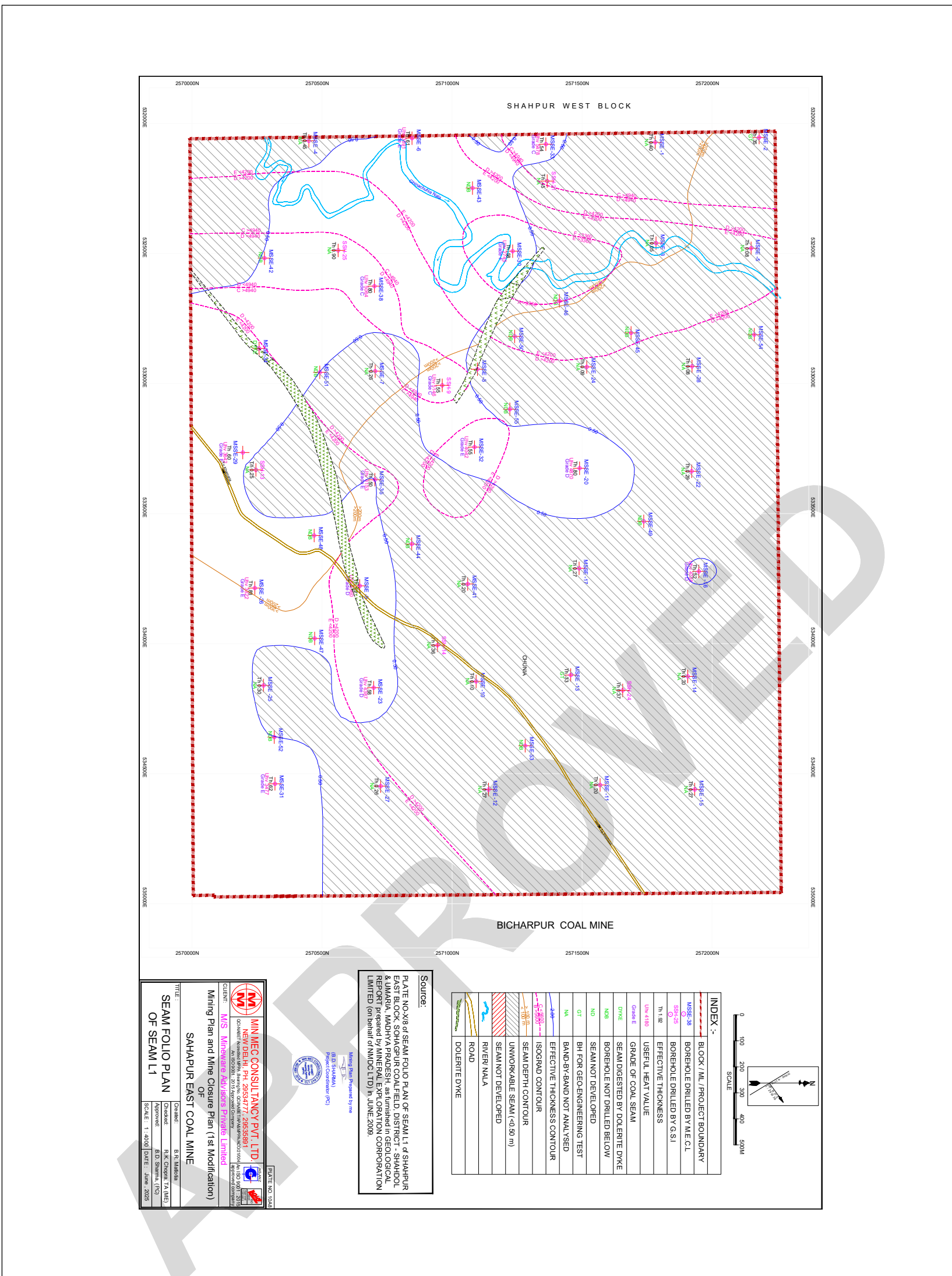
Project Coordinator: **R. D. Sharma (P.D.)**

Scale: **1:4000**

Plate No. **09**

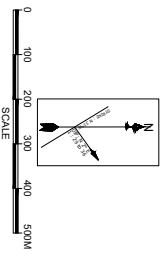


Plan / Plate 10A3



INDEX :-

MSSE-38	BLOCK / IML / PROJECT BOUNDARY
MSSE-39	BOREHOLE DRILLED BY M.E.C.L.
MSSE-40	BOREHOLE DRILLED BY G.S.I
MSSE-41	EFFECTIVE THICKNESS
MSSE-42	USEFUL HEAT VALUE
MSSE-43	GRADE OF COAL SEAM
MSSE-44	SEAM DIGESTED BY DOLERITE DYKE
MSSE-45	BOREHOLE NOT DRILLED BELOW
MSSE-46	SEAM NOT DEVELOPED
MSSE-47	BIT FOR GEOENGINEERING TEST
MSSE-48	BAND-BY-BAND NOT ANALYSED
MSSE-49	EFFECTIVE THICKNESS CONTOUR
MSSE-50	ISOGRADE CONTOUR
MSSE-51	SEAM DEPTH CONTOUR
MSSE-52	UNWORKABLE SEAM (<40 m)
MSSE-53	SEAM NOT DEVELOPED
MSSE-54	ROAD
MSSE-55	RIVER / NALA
MSSE-56	DOLERITE DYKE



Source:
 PLATE NO-X/8 OF SEAM FOLIO PLAN OF SEAM L1 OF SHAHPUR EAST BLOCK, SOHAGPUR COALFIELD, DISTRICT - SHAHdol & JUMARA, MADHYA PRADESH, as furnished in GEOLOGICAL REPORT prepared by MINERAL EXPLORATION CORPORATION LIMITED (on behalf of MINCO LTD) in JUNE 2009.

MINMEC CONSULTANCY PVT. LTD.
 NEW DELHI, PH: 26544777, 26535581
 CLIENT: **M/S. MINERAL EXPLORATION CORPORATION LIMITED**
 Mining Plan and Mine Closure Plan (1st Modification) OF SAHAPUR EAST COAL MINE

Prepared By: B. S. Mishra
Checked: R. K. Chandra, I.A. (M.E.)
Approved: B. D. Sharma, I(CS)
 SCALE: 1:4000 | DATE: June 2009

Handwritten signature or initials.