



निर्यात के लिए नहीं NOT FOR EXPORT

OPEN SERIES
MAP

No. G43E5

Scale 1:50,000

H43W4 (53D/4)	H43W8 (53D/8)	H43W12 (53D/12)
G43E1 (54A/1)	G43E5 (54A/5)	G43E9 (54A/9)
G43E2 (54A/2)	G43E6 (54A/6)	G43E10 (54A/10)

1 Sikar, RAJASTHAN.
2 Jhunjhunun, RAJASTHAN.

भारतीय सर्वेक्षण विभाग SURVEY OF INDIA

1st Edition 2013.

Price: ₹ 94/-

CONVENTIONAL SYMBOLS

Express highway, with toll; with bridge; with distance stone	120	20
Roads, metalled; according to importance	120	20
Roads, double carriageway; according to importance	120	20
Unmetalled Road. Cart-track. Pack-track with pass. Foot-path	120	20
Streams: with track in bed; undefined. Canal	120	20
Dams: masonry or rock-filled; earthwork. Weir	120	20
River: dry with water channel; with island & rocks. Tidal river	120	20
Submerged rocks. Shoal. Swamp. Reeds	120	20
Wells: lined; unlined. Tube-well. Spring. Tanks: perennial; dry	120	20
Embankments: road or rail; tank. Broken ground	120	20
Railways, broad gauge: double; single with distance stone; do	120	20
Mineral line or tramway. Kih. Cutting with tunnel	120	20
Contours with sub-features. Rocky slopes. Cliffs	120	20
Sand features: (T) flat. (Z) sand-hills (permanent). (S) dunes (shifting)	120	20
Towns or Villages: inhabited; deserted. Fort	120	20
Huts: permanent; temporary. Tower. Antiquities	120	20
Temples. Chhatra. Church. Mosque. Idgah. Tomb. Graves	120	20
Lighthouses. Lightships. Buoys: lighted; unlighted. Anchorage	120	20
Mine. Vine on trellis. Grass. Scrub	120	20
Palms: palmyra; other. Plantain. Conifer. Bamboo. Other trees	120	20
Areas: cultivated; wooded. Surveyed tree	120	20
Boundary, international	120	20
state: demarcated; undemarcated	120	20
district: subdivision, tahsil or taluk; forest	120	20
Boundary Pillars: surveyed; unlocated	120	20
Heights, triangulated; station; point; approximate	120	20
Bench-mark: geodetic; tertiary; canal	120	20
Post office. Telegraph office. Overhead tank	120	20
Rest house or inspection bungalow. Circuit house. Police station	120	20
Camping ground. Forest: reserved; protected	120	20
Spaced names: administrative; locality or tribal	120	20
Hospital. Dispensary. Veterinary: Hospital / Dispensary	120	20
Aerodrome. Helipad. Tourist site	120	20
Power line: with pylons surveyed; with poles unsurveyed	120	20

REFERENCES

NH 48 National Highway No. 48. RICO Rajasthan State Industrial Development and Investment Corporation Ltd.

NOTES

Heights are in metres and above Indian mean sea level.
Contours are approximate.
A relative height, e.g., 10, represents the approximate height, in metres, between the top and bottom of a steep slope.
A relative height, e.g., 10, against a well, indicates its total depth in metres.
Tanks, shown dry, in this area usually contain water from July to December.
Cart-roads and unmetalled roads, in this sheet are generally motorable in dry season.
Cultivation is periodic and dependent on rainfall.
Digpi is a tank which is used for collection of water.

COMPILED INDEX

A Compiled from 1:25,000 survey, 1973-75. Updated for major details during 2011-12.

Projection - UTM Datum - WGS 84

Magnetic Variation from True North about 2° East in 2010.
(Increasing by about 2' annually).

1:50,000

500 m to 1 cm 2 cm to 1 km

Metres 1000 500 0 1 2 3 Kilometres

CONTOUR INTERVAL 10 METRES

For further details about this map, please contact
Director
Rajasthan Geo-Spatial Data Centre
Survey of India
Sector 10, Vidya Nagar
Jaipur.

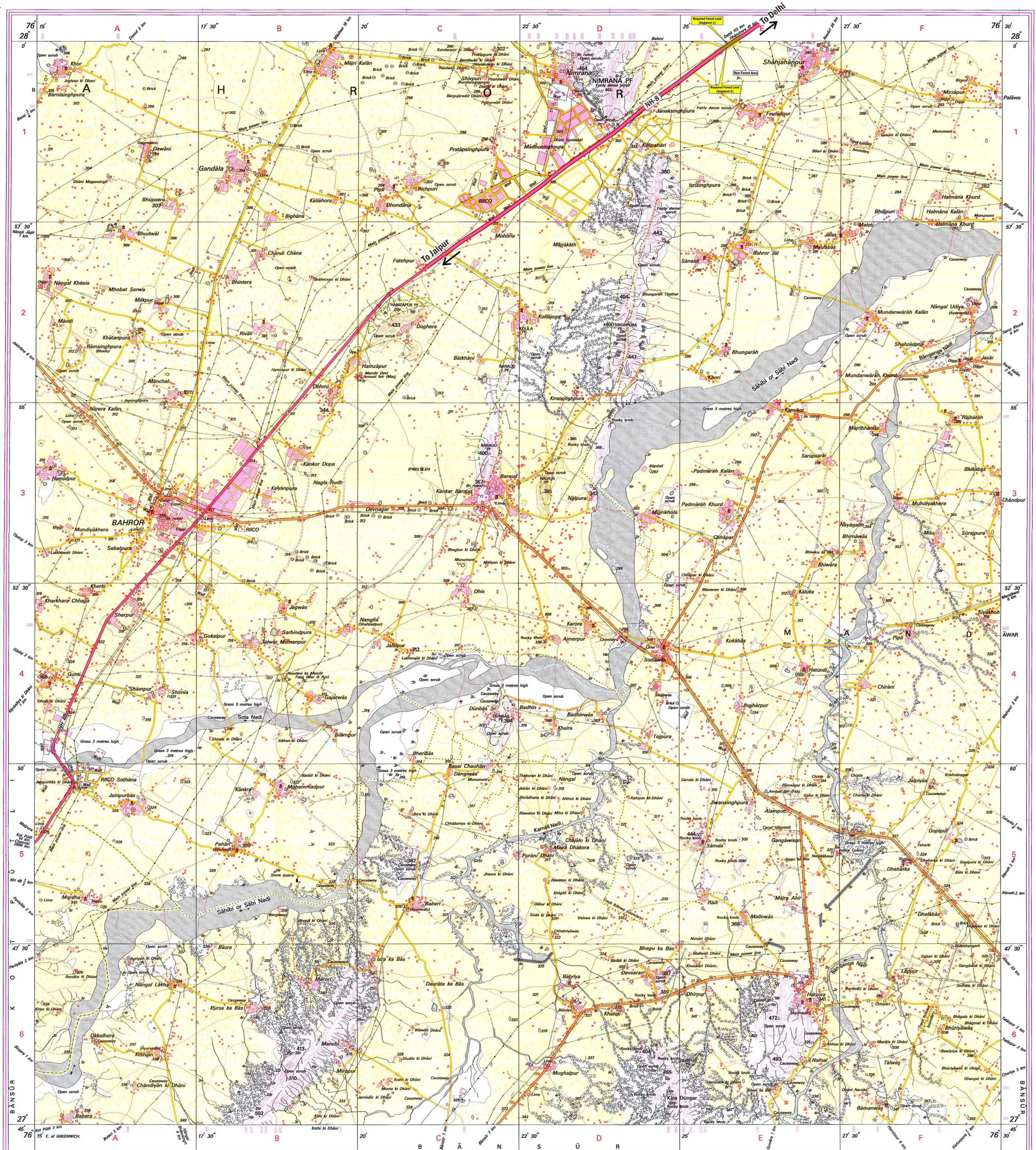
WEBSITE - www.surveyofindia.gov.in

Reproduction in whole or part by any means is prohibited
without the written permission of Survey of India, the
National Mapping Agency.

GOVERNMENT OF INDIA COPYRIGHT, 2013.

MAP SHOWING GEO-REFERENCED SURVEY OF INDIA TOPOSHEET OF REQUIRED FOREST LAND

Project Name :- "Construction of Toll Plaza Between Km. 115.00 to Km. 116.00 at Delhi-Jaipur Section of NH-8, District-Alwar, Rajasthan".
Proposal No. : FP/RJ/Road/41266/2019 (Applied Area - 2.852 Hectare)



REG. No. -WPG O'13 (Rajasthan GDC-1:50,000)-

LEGEND

- Required Forest Land
- National Highway-8

भारत के सर्वेक्षण में सर्वेक्षण रास्ते, के निर्माण में प्रयुक्त,
Published under the direction of Dr. Swarna Subba Rao, Surveyor General of India,
Survey of India, Hathi Bunka Estate, Post Box No. 37, Dehra Dun - 248001 (Uttarakhand),
Department of Science & Technology, Government of India.

परियोजना निरीक्षक / Project Director
भारत का. यका. ड. NHAI PIU Jaipur

PRINTED AT THE WESTERN PRINTING GROUP OF SURVEY OF INDIA.