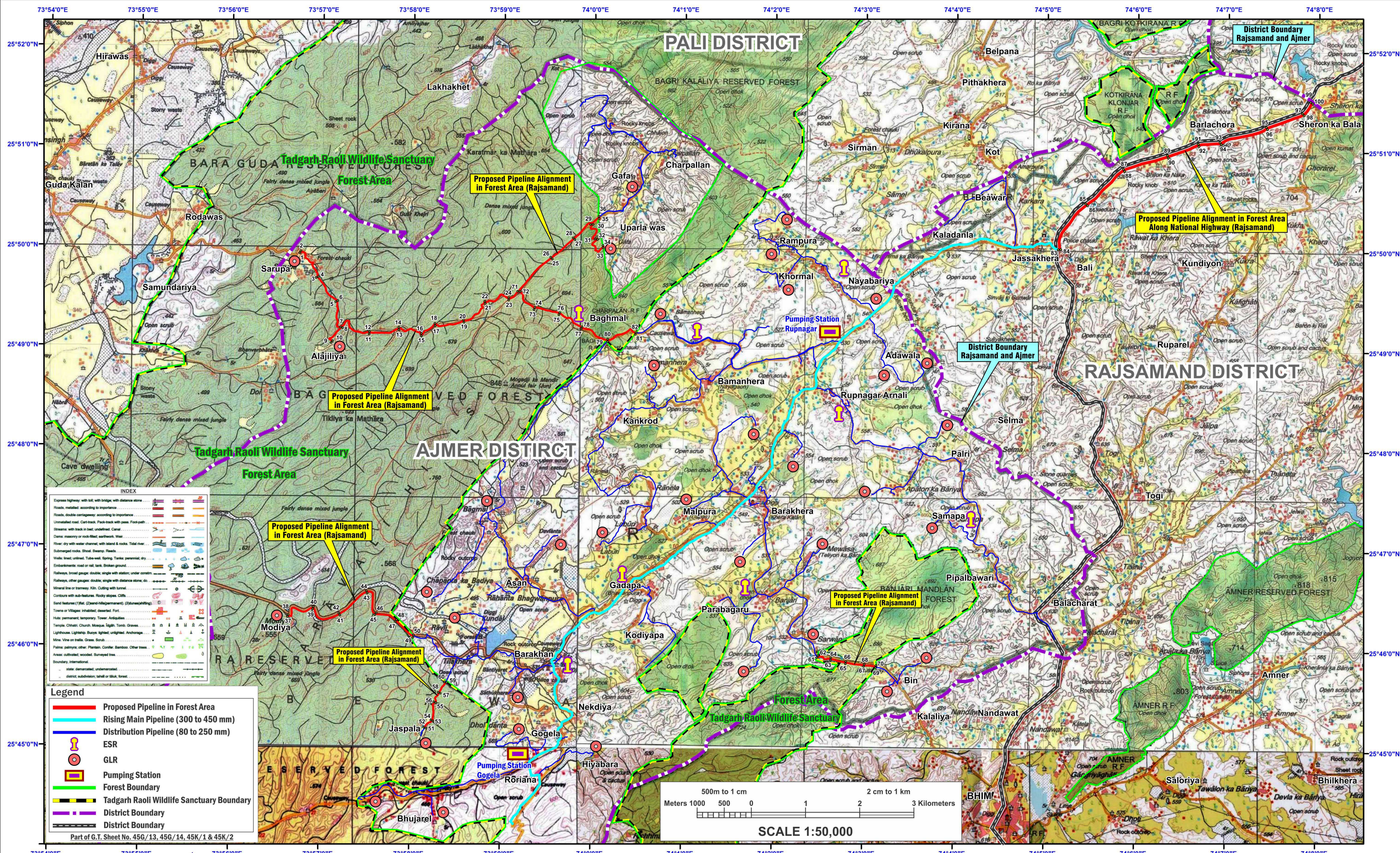
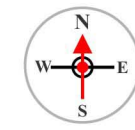


MAP SHOWING GEO-REFERENCED SURVEY OF INDIA TOPOSHEET WITH FOREST BOUNDARY AND PROPOSED PIPELINE ALIGNMENT IN WILDLIFE FOREST AND NON FOREST AREA WITH COORDINATES (RAJSAMAND DEIVISION)

Proposal No. : FP/RJ/WATER/33714/2018 (Applied Area : 7.0484 ha)

Name of Project : Fluoride Control Project Jawaaja for Remaining Village of Tehsil Beawar, 589 Village District Ajmer (Rajasthan)



Requried Forest Area Coordinates		
S.No.	Latitude	Longitude
1	25° 49' 55.430" N	73° 56' 54.887" E
2	25° 49' 55.460" N	73° 56' 54.900" E
3	25° 49' 40.338" N	73° 57' 6.369" E
4	25° 49' 40.346" N	73° 57' 6.404" E
5	25° 49' 26.069" N	73° 57' 19.700" E
6	25° 49' 26.076" N	73° 57' 19.735" E
7	25° 49' 10.688" N	73° 57' 22.858" E
8	25° 49' 10.696" N	73° 57' 22.900" E
9	25° 49' 1.886" N	73° 57' 16.354" E
10	25° 49' 1.912" N	73° 57' 16.375" E
11	25° 49' 7.211" N	73° 57' 41.855" E
12	25° 49' 7.243" N	73° 57' 41.861" E
13	25° 49' 9.885" N	73° 58' 1.181" E
14	25° 49' 9.918" N	73° 58' 1.181" E
15	25° 49' 6.189" N	73° 58' 15.326" E
16	25° 49' 6.157" N	73° 58' 15.321" E
17	25° 49' 12.621" N	73° 58' 24.779" E
18	25° 49' 12.654" N	73° 58' 24.774" E
19	25° 49' 14.837" N	73° 58' 43.977" E
20	25° 49' 14.869" N	73° 58' 43.972" E
21	25° 49' 26.179" N	73° 58' 57.536" E
22	25° 49' 26.209" N	73° 58' 57.520" E
23	25° 49' 28.300" N	73° 59' 13.931" E
24	25° 49' 28.268" N	73° 59' 13.934" E
25	25° 49' 53.155" N	73° 59' 42.051" E
26	25° 49' 53.180" N	73° 59' 42.029" E
27	25° 50' 13.176" N	74° 0' 5.392" E
28	25° 50' 13.200" N	74° 0' 5.366" E
29	25° 50' 20.547" N	74° 0' 21.232" E
30	25° 50' 20.558" N	74° 0' 21.266" E
31	25° 50' 12.317" N	74° 0' 18.269" E
32	25° 50' 12.319" N	74° 0' 18.305" E
33	25° 50' 5.450" N	74° 0' 23.633" E
34	25° 50' 5.473" N	74° 0' 23.609" E
35	25° 50' 20.886" N	74° 0' 22.544" E
36	25° 50' 20.918" N	74° 0' 22.541" E
37	25° 46' 20.785" N	73° 56' 47.500" E
38	25° 46' 20.813" N	73° 56' 47.518" E
39	25° 46' 25.397" N	73° 57' 2.400" E
40	25° 46' 25.429" N	73° 57' 2.408" E
41	25° 46' 19.569" N	73° 57' 18.134" E
42	25° 46' 19.601" N	73° 57' 18.127" E
43	25° 46' 30.610" N	73° 57' 37.064" E
44	25° 46' 30.641" N	73° 57' 37.052" E
45	25° 46' 17.144" N	73° 57' 43.830" E
46	25° 46' 17.173" N	73° 57' 43.847" E
47	25° 46' 12.755" N	73° 57' 58.336" E
48	25° 46' 12.782" N	73° 57' 58.356" E
49	25° 46' 6.237" N	73° 58' 10.906" E
50	25° 46' 6.267" N	73° 58' 10.920" E
51	25° 45' 10.530" N	73° 58' 20.021" E
52	25° 45' 10.547" N	73° 58' 19.991" E
53	25° 45' 14.657" N	73° 58' 25.180" E
54	25° 45' 14.670" N	73° 58' 25.147" E
55	25° 45' 25.959" N	73° 58' 27.205" E
56	25° 45' 25.967" N	73° 58' 27.170" E
57	25° 45' 36.720" N	73° 58' 33.099" E
58	25° 45' 36.735" N	73° 58' 33.067" E
59	25° 45' 43.899" N	73° 58' 36.981" E
60	25° 45' 43.902" N	73° 58' 36.945" E
61	25° 45' 54.659" N	74° 2' 40.014" E
62	25° 45' 54.686" N	74° 2' 40.034" E
63	25° 45' 53.361" N	74° 2' 48.031" E
64	25° 45' 53.393" N	74° 2' 48.037" E
65	25° 45' 51.147" N	74° 2' 58.716" E
66	25° 45' 51.179" N	74° 2' 58.723" E
67	25° 45' 49.573" N	74° 3' 11.409" E
68	25° 45' 49.606" N	74° 3' 11.413" E
69	25° 45' 48.924" N	74° 3' 18.107" E
70	25° 45' 48.954" N	74° 3' 18.225" E
71	25° 49' 32.617" N	73° 59' 20.300" E
72	25° 49' 32.642" N	73° 59' 20.323" E
73	25° 49' 22.681" N	73° 59' 30.856" E
74	25° 49' 22.714" N	73° 59' 30.863" E
75	25° 49' 19.495" N	73° 59' 47.423" E
76	25° 49' 19.524" N	73° 59' 47.438" E
77	25° 49' 11.359" N	74° 0' 1.987" E
78	25° 49' 11.388" N	74° 0' 2.005" E
79	25° 49' 3.569" N	74° 0' 19.524" E
80	25° 49' 3.568" N	74° 0' 19.574" E
81	25° 49' 8.286" N	74° 0' 37.907" E
82	25° 49' 8.318" N	74° 0' 37.911" E
83	25° 50' 0.159" N	74° 5' 16.865" E
84	25° 50' 0.160" N	74° 5' 16.865" E
85	25° 50' 30.734" N	74° 5' 37.879" E
86	25° 50' 30.706" N	74° 5' 37.899" E
87	25° 50' 48.635" N	74° 5' 57.244" E
88	25° 50' 48.608" N	74° 5' 57.264" E
89	25° 50' 58.250" N	74° 6' 29.485" E
90	25° 50' 58.219" N	74° 6' 29.497" E
91	25° 51' 5.722" N	74° 6' 51.975" E
92	25° 51' 5.690" N	74° 6' 51.980" E
93	25° 51' 6.339" N	74° 7' 4.329" E
94	25° 51' 6.308" N	74° 7' 4.339" E
95	25° 51' 16.525" N	74° 7' 35.124" E
96	25° 51' 16.494" N	74° 7' 35.137" E
97	25° 51' 24.281" N	74° 7' 59.477" E
98	25° 51' 24.256" N	74° 7' 59.500" E
99	25° 51' 30.668" N	74° 8' 3.239" E
100	25° 51' 30.655" N	74° 8' 3.272" E

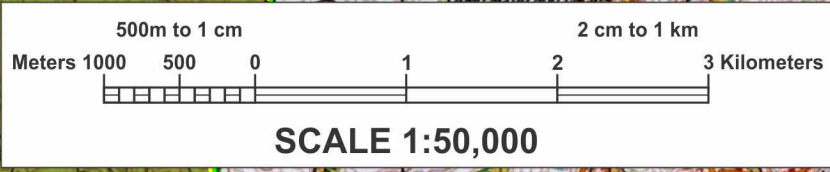
INDEX

Express highway, with toll, with bridge, with distance stone	
Roads, metalled, according to importance	
Roads, double carriageway, according to importance	
Unmetalled road, Cart track, Track road, with pass, Footpath	
Stream, with track in bed, unbridged, Canal	
Dam, masonry or rock-filled, earthen, Wall	
River, dry with water channel, with island & rocks, Tidal river	
Submerged rocks, Shoal, Swamp, Reeds	
Wells, hand, unhand, Tube-well, Spring, Tank, perennial, dry	
Embankment, road or rail, tank, Broken ground	
Railways, broad gauge, double, single with station, under construction	
Railways, other gauges, double, single with station, do	
Natural line of railway, Rtn. Cutting with tunnel	
Contours with spot-heights, Rocky slopes, Cliff	
Sand mounds (T.M. (Dune-hill) mounds), (Dune) mounds	
Towns or Villages, inhabited, deserted, Fort	
Hills, permanent, temporary, Tower, Antiquity	
Temple, Chhatra, Church, Mosque, Light, Tomb, Graves	
Lighthouse, Lightship, Buoy, light, unlighted, Anchorage	
Mine, Vein on track, Grass, Sand	
Palms, palms, other, Parasol, Conifer, Bamboo, Other trees	
Areas, cultivated, wooded, Surveyed tree	
Boundary, International	
State demarcation, colonial	
district, subdivision, tahsil or M.A. forest	

Legend

	Proposed Pipeline in Forest Area
	Rising Main Pipeline (300 to 450 mm)
	Distribution Pipeline (80 to 250 mm)
	ESR
	GLR
	Pumping Station
	Forest Boundary
	Tadgarh Raoli Wildlife Sanctuary Boundary
	District Boundary
	District Boundary

Part of G.T. Sheet No. 45G/13, 45G/14, 45K/1 & 45K/2



*(Signature)*  
EXECUTIVE ENGINEER  
P.H.E.D. PROJECT  
DIV. JAWAJA, BEAWAR