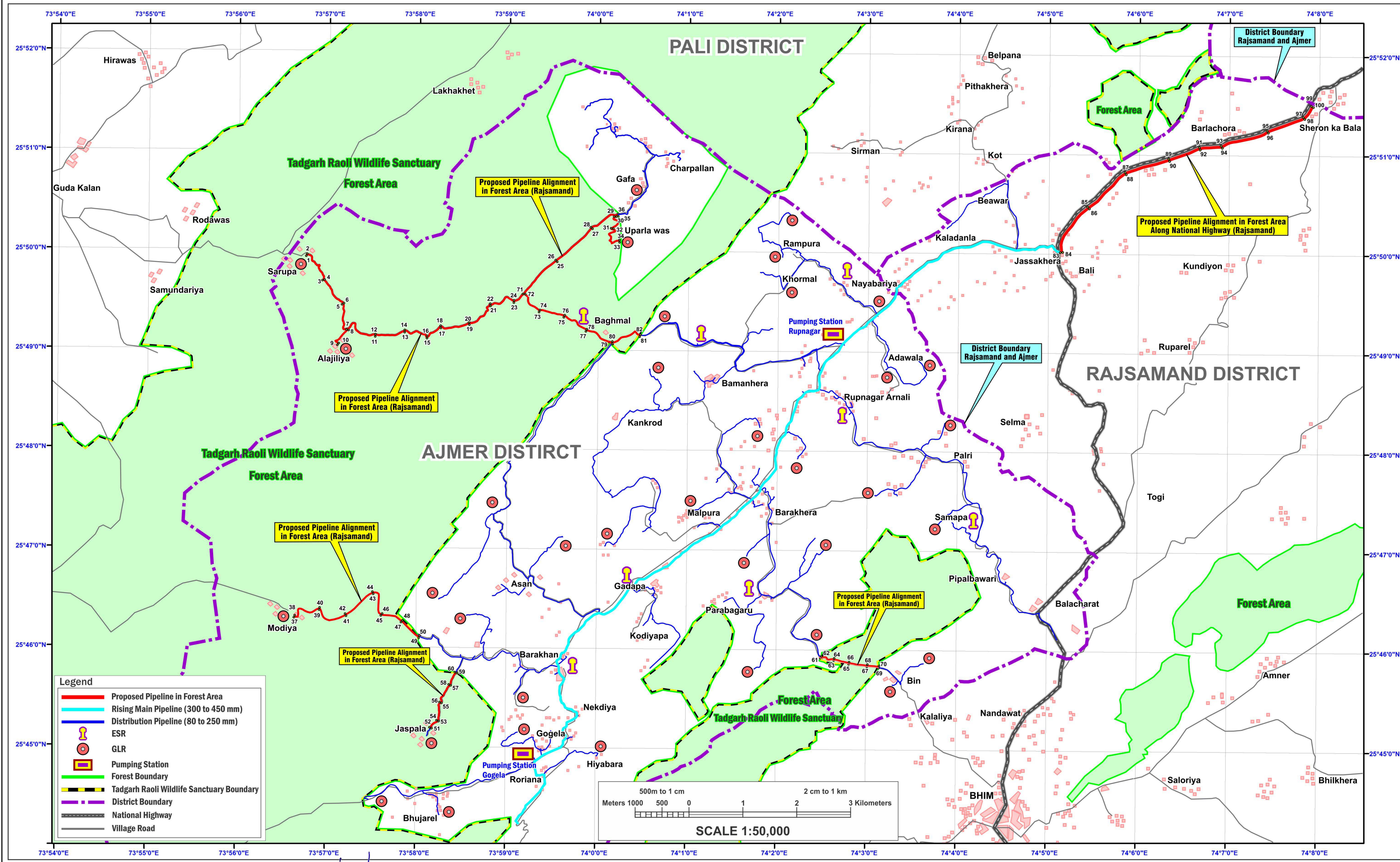
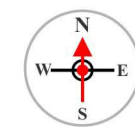


MAP SHOWING DIGITAL MAP WITH FOREST BOUNDARY AND PROPOSED PIPELINE ALIGNMENT IN WILDLIFE, FOREST AND NON FOREST AREA WITH COORDINATES (RAJSAMAND DEIVISION)

Proposal No. : FP/RJ/WATER/33714/2018 (Applied Area : 7.0484 ha)

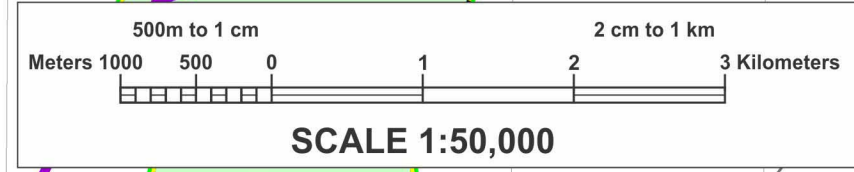
Name of Project : Fluoride Control Project Jawaaja for Remaining Village of Tehsil Beawar, 589 Village District Ajmer (Rajasthan)



Required Forest Area Coordinates		
S.No.	Latitude	Longitude
1	25° 49' 55.430" N	73° 56' 54.887" E
2	25° 49' 55.460" N	73° 56' 54.900" E
3	25° 49' 40.338" N	73° 57' 6.369" E
4	25° 49' 40.346" N	73° 57' 6.404" E
5	25° 49' 26.069" N	73° 57' 19.700" E
6	25° 49' 26.076" N	73° 57' 19.735" E
7	25° 49' 10.688" N	73° 57' 22.858" E
8	25° 49' 10.696" N	73° 57' 22.900" E
9	25° 49' 1.886" N	73° 57' 16.354" E
10	25° 49' 1.912" N	73° 57' 16.375" E
11	25° 49' 7.211" N	73° 57' 41.855" E
12	25° 49' 7.243" N	73° 57' 41.861" E
13	25° 49' 9.885" N	73° 58' 1.181" E
14	25° 49' 9.918" N	73° 58' 1.181" E
15	25° 49' 6.189" N	73° 58' 15.326" E
16	25° 49' 6.157" N	73° 58' 15.321" E
17	25° 49' 12.621" N	73° 58' 24.779" E
18	25° 49' 12.654" N	73° 58' 24.774" E
19	25° 49' 14.837" N	73° 58' 43.977" E
20	25° 49' 14.869" N	73° 58' 43.972" E
21	25° 49' 26.179" N	73° 58' 57.536" E
22	25° 49' 26.209" N	73° 58' 57.520" E
23	25° 49' 28.300" N	73° 59' 13.931" E
24	25° 49' 28.268" N	73° 59' 13.934" E
25	25° 49' 53.155" N	73° 59' 42.051" E
26	25° 49' 53.180" N	73° 59' 42.029" E
27	25° 50' 13.176" N	74° 0' 5.392" E
28	25° 50' 13.200" N	74° 0' 5.366" E
29	25° 50' 20.547" N	74° 0' 21.232" E
30	25° 50' 20.558" N	74° 0' 21.266" E
31	25° 50' 18.317" N	74° 0' 18.269" E
32	25° 50' 12.319" N	74° 0' 18.305" E
33	25° 50' 5.450" N	74° 0' 23.633" E
34	25° 50' 5.473" N	74° 0' 23.609" E
35	25° 50' 20.886" N	74° 0' 22.544" E
36	25° 50' 20.918" N	74° 0' 22.541" E
37	25° 46' 20.785" N	73° 56' 47.500" E
38	25° 46' 20.813" N	73° 56' 47.518" E
39	25° 46' 25.397" N	73° 57' 2.400" E
40	25° 46' 25.429" N	73° 57' 2.408" E
41	25° 46' 19.569" N	73° 57' 18.134" E
42	25° 46' 19.601" N	73° 57' 18.127" E
43	25° 46' 30.610" N	73° 57' 37.064" E
44	25° 46' 30.641" N	73° 57' 37.052" E
45	25° 46' 17.144" N	73° 57' 43.830" E
46	25° 46' 17.173" N	73° 57' 43.847" E
47	25° 46' 12.755" N	73° 57' 58.336" E
48	25° 46' 12.782" N	73° 57' 58.356" E
49	25° 46' 6.237" N	73° 58' 10.906" E
50	25° 46' 6.267" N	73° 58' 10.920" E
51	25° 45' 10.530" N	73° 58' 20.021" E
52	25° 45' 10.547" N	73° 58' 19.991" E
53	25° 45' 14.657" N	73° 58' 25.180" E
54	25° 45' 14.670" N	73° 58' 25.147" E
55	25° 45' 25.959" N	73° 58' 27.205" E
56	25° 45' 25.967" N	73° 58' 27.170" E
57	25° 45' 36.720" N	73° 58' 33.099" E
58	25° 45' 36.735" N	73° 58' 33.067" E
59	25° 45' 43.899" N	73° 58' 36.981" E
60	25° 45' 43.902" N	73° 58' 36.945" E
61	25° 45' 54.659" N	74° 2' 40.014" E
62	25° 45' 54.686" N	74° 2' 40.034" E
63	25° 45' 53.361" N	74° 2' 48.031" E
64	25° 45' 53.393" N	74° 2' 48.037" E
65	25° 45' 51.147" N	74° 2' 58.716" E
66	25° 45' 51.179" N	74° 2' 58.723" E
67	25° 45' 49.573" N	74° 3' 11.409" E
68	25° 45' 49.606" N	74° 3' 11.413" E
69	25° 45' 48.924" N	74° 3' 18.210" E
70	25° 45' 48.954" N	74° 3' 18.225" E
71	25° 49' 32.617" N	73° 59' 20.300" E
72	25° 49' 32.642" N	73° 59' 20.323" E
73	25° 49' 22.681" N	73° 59' 30.856" E
74	25° 49' 22.714" N	73° 59' 30.863" E
75	25° 49' 19.495" N	73° 59' 47.423" E
76	25° 49' 19.524" N	73° 59' 47.438" E
77	25° 49' 11.359" N	74° 0' 1.987" E
78	25° 49' 11.388" N	74° 0' 2.005" E
79	25° 49' 3.569" N	74° 0' 19.524" E
80	25° 49' 3.568" N	74° 0' 19.574" E
81	25° 49' 8.286" N	74° 0' 37.907" E
82	25° 49' 8.318" N	74° 0' 37.911" E
83	25° 50' 0.159" N	74° 5' 16.829" E
84	25° 50' 0.160" N	74° 5' 16.865" E
85	25° 50' 30.734" N	74° 5' 37.879" E
86	25° 50' 30.706" N	74° 5' 37.899" E
87	25° 50' 48.635" N	74° 5' 57.244" E
88	25° 50' 48.608" N	74° 5' 57.264" E
89	25° 50' 58.250" N	74° 6' 29.485" E
90	25° 50' 58.219" N	74° 6' 29.497" E
91	25° 51' 5.722" N	74° 6' 51.975" E
92	25° 51' 5.690" N	74° 6' 51.980" E
93	25° 51' 6.339" N	74° 7' 4.329" E
94	25° 51' 6.308" N	74° 7' 4.339" E
95	25° 51' 16.525" N	74° 7' 35.124" E
96	25° 51' 16.494" N	74° 7' 35.137" E
97	25° 51' 24.281" N	74° 7' 59.477" E
98	25° 51' 24.256" N	74° 7' 59.500" E
99	25° 51' 30.668" N	74° 8' 3.239" E
100	25° 51' 30.655" N	74° 8' 3.272" E

Legend

- Proposed Pipeline in Forest Area
- Rising Main Pipeline (300 to 450 mm)
- Distribution Pipeline (80 to 250 mm)
- ESR
- GLR
- Pumping Station
- Forest Boundary
- - - Tadgarh Raoli Wildlife Sanctuary Boundary
- - - District Boundary
- National Highway
- Village Road



(Signature)
EXECUTIVE ENGINEER
P.H.E.D. PROJECT
DIV. JAWAJA, BEAWAR