

DGPS SURVEYED MAP SHOWING THE FOREST AREA TO BE DIVERTED WITHIN SUBHADRA OPEN CAST PROJECT IN VILLAGE KANKARE (SHEET NO-1) OF M/S MAHANADI COAL FIELD LIMITED AT SUBHADRA AREA IN ANGUL DISTRICT.



Legend

[Red line]	DGPS SURVEYED GEO-REF COORDINATES
[Green line]	DERIVED COORDINATES OF FOREST PILLAR POINTS
[Black line]	BOUNDARY PILLARS
[Green shaded area]	REVENUE FOREST PATCHES
[Red line]	BOUNDARY

DGPS SURVEYED POINTS USED FOR GEO-REFERENCING

SL. NO.	POINT ID	EASTING	NORTHING	LONGITUDE	LATITUDE
1	BN-1.1	231884.481	232871.128	84°58'33.7988"	20°57'05.3440"
2	BN-1.2	232207.896	233053.367	84°58'01.4284"	20°57'05.4038"
3	BN-1.3	231824.340	233053.41	84°58'04.9544"	20°57'05.3996"
4	BN-2.1	231484.13	233052.688	84°57'56.6738"	20°57'05.1107"
5	CH-1.1	231415.336	233046.43	84°57'57.3578"	20°57'05.1742"
6	KU-1.1	232095.791	233035.871	84°57'59.7382"	20°57'05.3078"

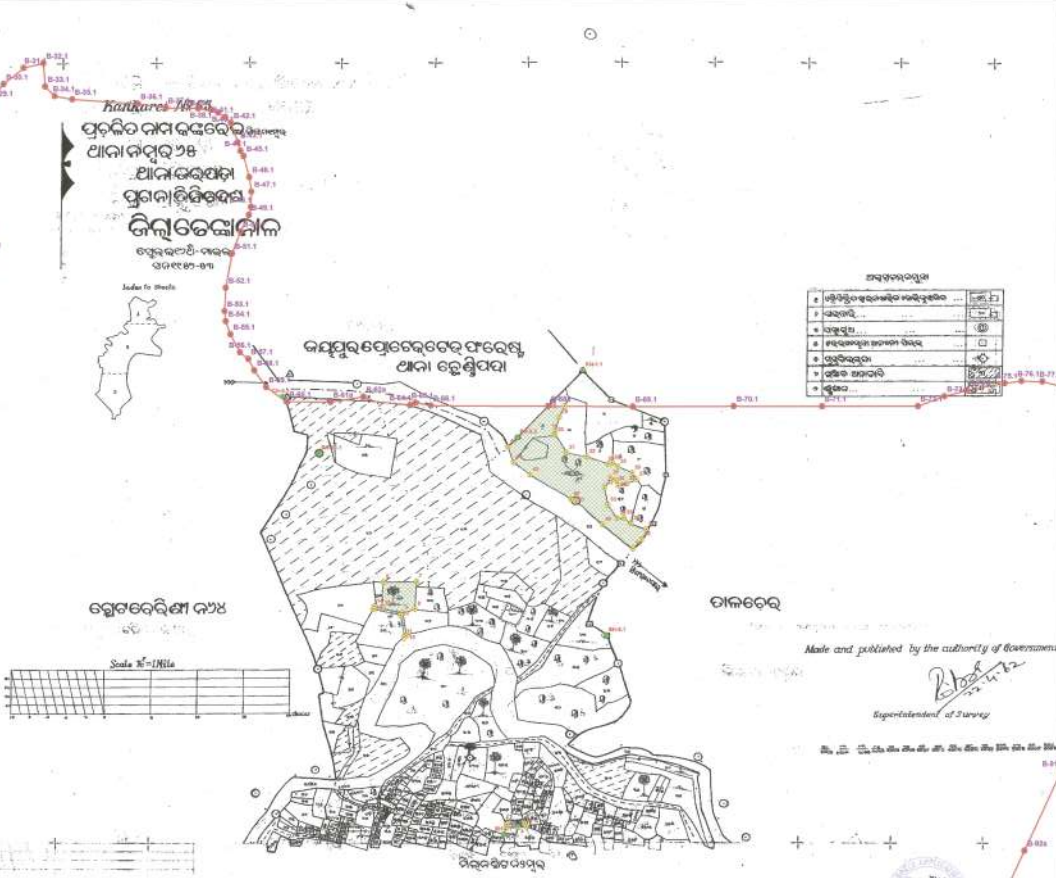
DERIVED FOREST PATCH BOUNDARY COORDINATES

PILLAR ID	LONGITUDE	LATITUDE	EASTING	NORTHING
1	84°58'33.7988"	20°57'05.3440"	231884.481	232871.128
2	84°58'01.4284"	20°57'05.4038"	232207.896	233053.367
3	84°58'04.9544"	20°57'05.3996"	231824.340	233053.41
4	84°57'56.6738"	20°57'05.1107"	231484.13	233052.688
5	84°57'57.3578"	20°57'05.1742"	231415.336	233046.43
6	84°57'59.7382"	20°57'05.3078"	232095.791	233035.871
7	84°57'59.7382"	20°57'05.3078"	232095.791	233035.871
8	84°57'59.7382"	20°57'05.3078"	232095.791	233035.871
9	84°57'59.7382"	20°57'05.3078"	232095.791	233035.871
10	84°57'59.7382"	20°57'05.3078"	232095.791	233035.871
11	84°57'59.7382"	20°57'05.3078"	232095.791	233035.871
12	84°57'59.7382"	20°57'05.3078"	232095.791	233035.871
13	84°57'59.7382"	20°57'05.3078"	232095.791	233035.871
14	84°57'59.7382"	20°57'05.3078"	232095.791	233035.871
15	84°57'59.7382"	20°57'05.3078"	232095.791	233035.871
16	84°57'59.7382"	20°57'05.3078"	232095.791	233035.871
17	84°57'59.7382"	20°57'05.3078"	232095.791	233035.871
18	84°57'59.7382"	20°57'05.3078"	232095.791	233035.871
19	84°57'59.7382"	20°57'05.3078"	232095.791	233035.871
20	84°57'59.7382"	20°57'05.3078"	232095.791	233035.871
21	84°57'59.7382"	20°57'05.3078"	232095.791	233035.871
22	84°57'59.7382"	20°57'05.3078"	232095.791	233035.871
23	84°57'59.7382"	20°57'05.3078"	232095.791	233035.871
24	84°57'59.7382"	20°57'05.3078"	232095.791	233035.871
25	84°57'59.7382"	20°57'05.3078"	232095.791	233035.871
26	84°57'59.7382"	20°57'05.3078"	232095.791	233035.871
27	84°57'59.7382"	20°57'05.3078"	232095.791	233035.871
28	84°57'59.7382"	20°57'05.3078"	232095.791	233035.871
29	84°57'59.7382"	20°57'05.3078"	232095.791	233035.871
30	84°57'59.7382"	20°57'05.3078"	232095.791	233035.871
31	84°57'59.7382"	20°57'05.3078"	232095.791	233035.871
32	84°57'59.7382"	20°57'05.3078"	232095.791	233035.871
33	84°57'59.7382"	20°57'05.3078"	232095.791	233035.871
34	84°57'59.7382"	20°57'05.3078"	232095.791	233035.871
35	84°57'59.7382"	20°57'05.3078"	232095.791	233035.871
36	84°57'59.7382"	20°57'05.3078"	232095.791	233035.871
37	84°57'59.7382"	20°57'05.3078"	232095.791	233035.871
38	84°57'59.7382"	20°57'05.3078"	232095.791	233035.871
39	84°57'59.7382"	20°57'05.3078"	232095.791	233035.871
40	84°57'59.7382"	20°57'05.3078"	232095.791	233035.871
41	84°57'59.7382"	20°57'05.3078"	232095.791	233035.871
42	84°57'59.7382"	20°57'05.3078"	232095.791	233035.871
43	84°57'59.7382"	20°57'05.3078"	232095.791	233035.871
44	84°57'59.7382"	20°57'05.3078"	232095.791	233035.871
45	84°57'59.7382"	20°57'05.3078"	232095.791	233035.871

FOREST AREA STATISTICS

SL. NO.	YEAR	AREA (HA)	PERCENTAGE	TOTAL
1	2018	1.00	0.00	1.00
2	2019	1.00	0.00	1.00
3	2020	1.00	0.00	1.00
4	2021	1.00	0.00	1.00
5	2022	1.00	0.00	1.00

SURVEYED & PREPARED BY  
  
 AREAL CONSTRUCTIONS & GEO-INDIA SERVICES  
 BHUBANESWAR



Made and published by the authority of Government  
 Superintendent of Survey  
 Forest Range Officer  
 Angul Range