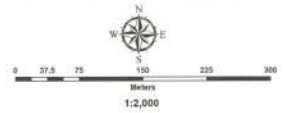
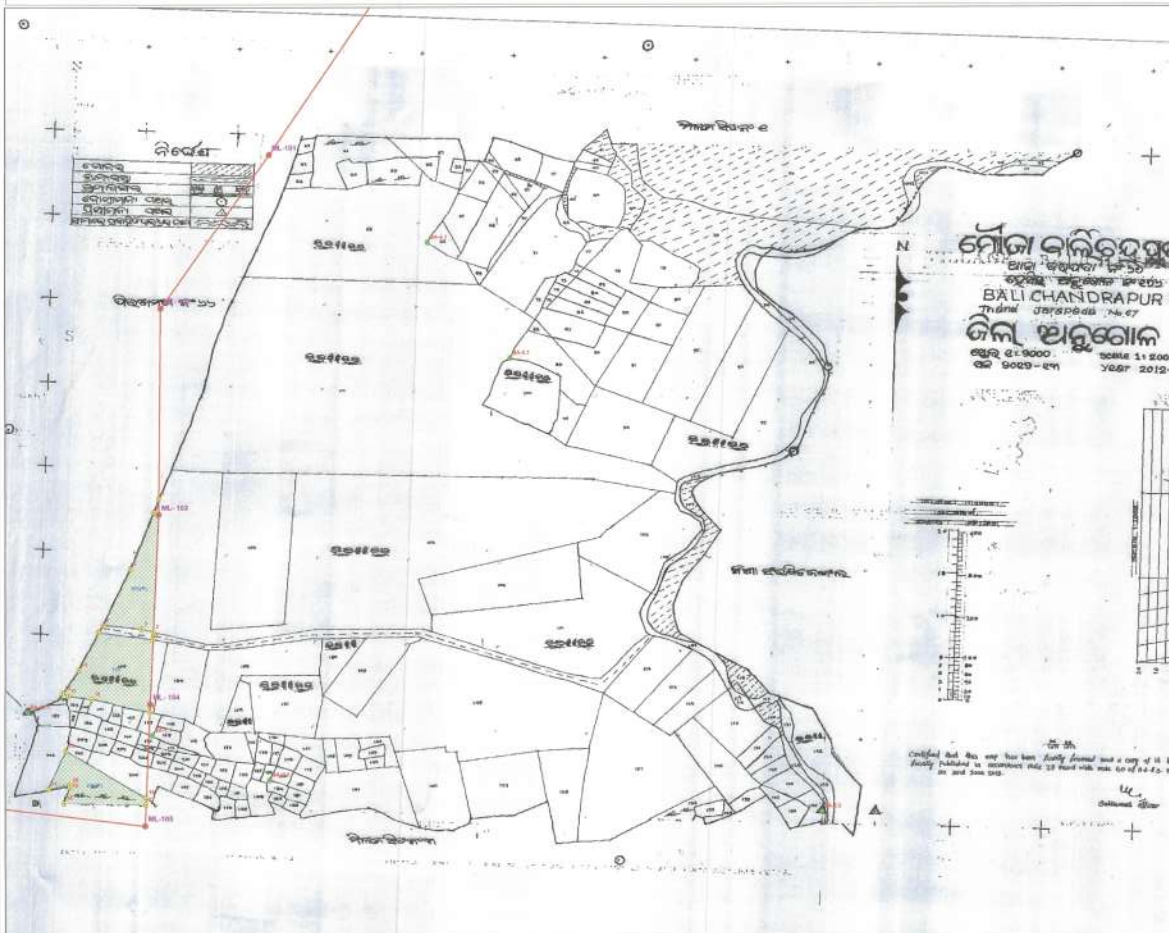


DGPS SURVEYED MAP SHOWING THE FOREST AREA TO BE DIVERTED WITHIN SUBHADRA OPEN CAST PROJECT IN VILLAGE BALICHANDRAPUR (SHEET NO-2) OF M/S MAHANADI COAL FIELD LIMITED AT SUBHADRA AREA IN ANGUL DISTRICT.



**Legend**

■	DGPS SURVEYED GEO-REF COORDINATES
■	DERIVED COORDINATES OF FOREST PILLAR POINTS
■	BOUNDARY PILLARS
■	REVENUE FOREST PATCHES
■	BOUNDARY

**DGPS SURVEYED POINTS USED FOR GEO-REFERENCES**

SL. NO	POINT ID	EASTING	NORTHING	LONGITUDE	LATITUDE
1	BA-1.1	291667.186	2316078.721	84°59'41.88122"	20°56'28.74288"
2	BA-2.2	291775.703	2316024.251	84°59'51.93396"	20°56'28.04484"
3	BA-4.1	291658.128	2317254.581	84°59'57.89430"	20°56'28.56350"
4	BA-5.1	291687.303	2317112.003	85°00'00.53700"	20°56'28.17280"
5	BA-6.2	291681.681	2316578.981	85°00'21.34300"	20°56'28.79879"
6	BA-12.1	291553.628	2316701.788	84°59'42.34300"	20°56'29.61572"

**DERIVED FOREST PATCH BOUNDARY COORDINATES**

PILLAR ID	LONGITUDE	LATITUDE	EASTING	NORTHING
1	84°59'47.34044"	20°56'28.77972"	291658.037	2316056.566
2	84°59'46.92516"	20°56'23.69148"	291649.854	2316000.144
3	84°59'46.48416"	20°56'23.79228"	291637.154	2316003.406
4	84°59'45.01932"	20°56'23.93340"	291594.885	2316008.282
5	84°59'46.05432"	20°56'26.09488"	291625.62	2316074.386
6	84°59'46.92094"	20°56'28.20500"	291651.756	2316060.952
7	84°59'46.84328"	20°56'23.68428"	291589.702	2316000.684
8	84°59'46.91112"	20°56'23.39088"	291649.337	2316790.931
9	84°59'46.78512"	20°56'20.63544"	291644.632	2316706.204
10	84°59'44.50300"	20°56'21.12300"	291581.454	2316722.018
11	84°59'43.69388"	20°56'21.23872"	291555.545	2316725.571
12	84°59'43.45548"	20°56'21.26436"	291548.709	2316723.525
13	84°59'44.09088"	20°56'22.22808"	291567.608	2316756.385
14	84°59'42.93708"	20°56'17.68884"	291532.321	2316636.972
15	84°59'43.59048"	20°56'19.13424"	291551.75	2316661.195
16	84°59'46.64832"	20°56'17.95728"	291639.425	2316605.433
17	84°59'46.63644"	20°56'17.07180"	291638.974	2316596.655
18	84°59'43.51956"	20°56'17.17796"	291548.927	2316599.51
19	84°59'43.74168"	20°56'17.34428"	291555.584	2316618.982
20	84°59'43.74024"	20°56'17.82816"	291555.579	2316620.963

**FOREST AREA STATISTICS**

SL. NO	VILLAGE NAME	PLOT NO	ISSUANCE NO.	AC	ALLO. AREA	HA	MAP AREA
1	BALICHANDRAPUR	100	100000	0.3	0.003	0.3471	
2	BALICHANDRAPUR	100	100000	1.394	0.792	3.4851	
3	BALICHANDRAPUR	100	100000	1.3	0.807	0.4021	
	TOTAL			3.094	1.602	4.2343	

**SURVEYED & PREPARED BY**

**AREAL CONSTRUCTIONS & GEO-INDIA SERVICES**  
BHUBANESWAR