

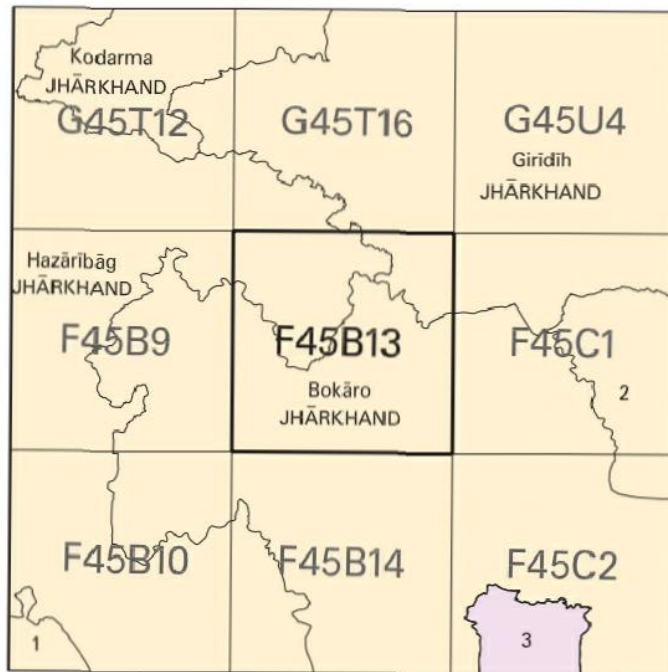


निर्यात के लिए नहीं NOT FOR EXPORT

OPEN SERIES
MAP

No. F45B13

Scale 1:50,000



1 Ranchi, JHARKHAND.
2 Dhanbad, JHARKHAND.
3 Purulia, WEST BENGAL.

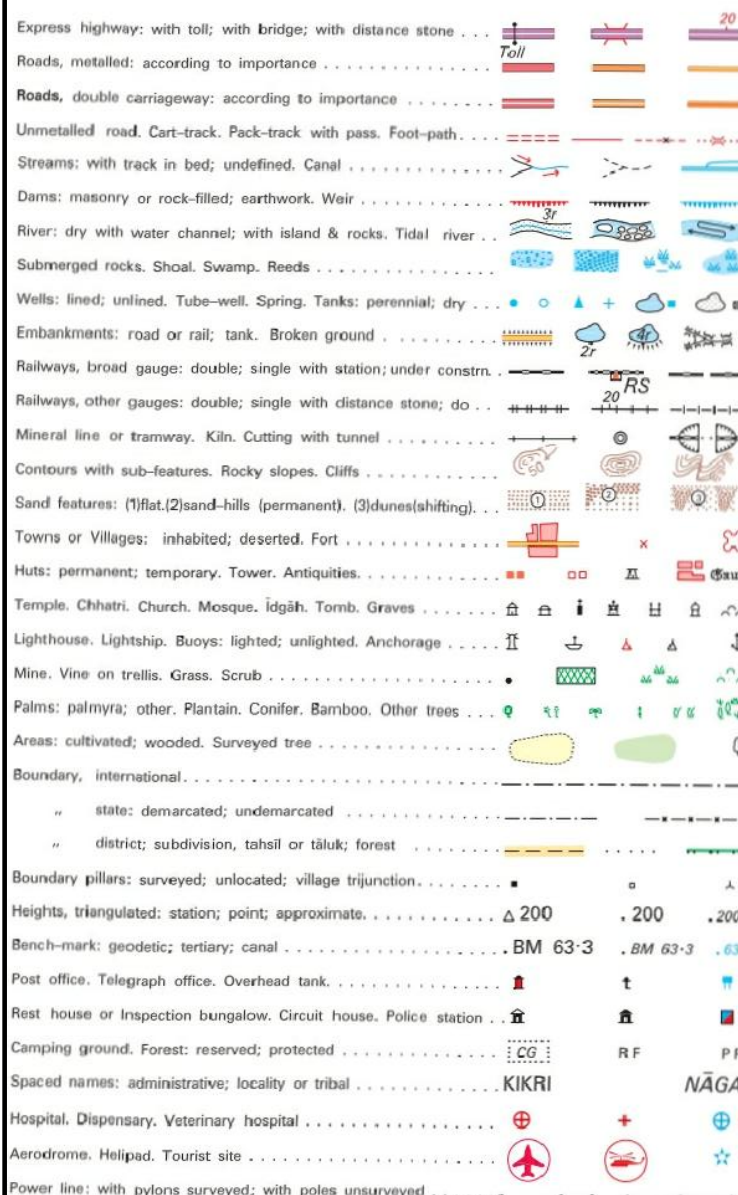
भारतीय सर्वेक्षण विभाग

SURVEY OF INDIA

1st Edition 2009.

Price : Rs. 50/-

CONVENTIONAL SYMBOLS



REFERENCE

Chy Chimney

NOTES :-

1. All heights are in metres and above Indian mean sea level.
2. Hours are approximate.
3. Relative height, dr, represents the approximate height, in metres, between the top and bottom of a slope.
4. Final Highway No. 2 is passing through the north east corner of the sheet.
5. Triangulated heights and contours in this sheet have not been adjusted to the heights of the spirit-level bench - marks and may not be strictly in accordance with them.

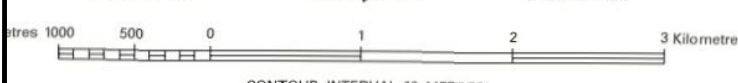
COMPILATION INDEX

A. Surveyed during 1975-76. Updated for major details during 2004-05.

Projection - UTM Datum - WGS 84

Magnetic Variation from True North about 1° West in 2005.
(Decreasing by about 1" annually).

1:50,000



CONTOUR INTERVAL 10 METRES

For further details about this map, please contact

Director

Jharkhand Geo-Spatial Data Centre

Survey of India, Doranda

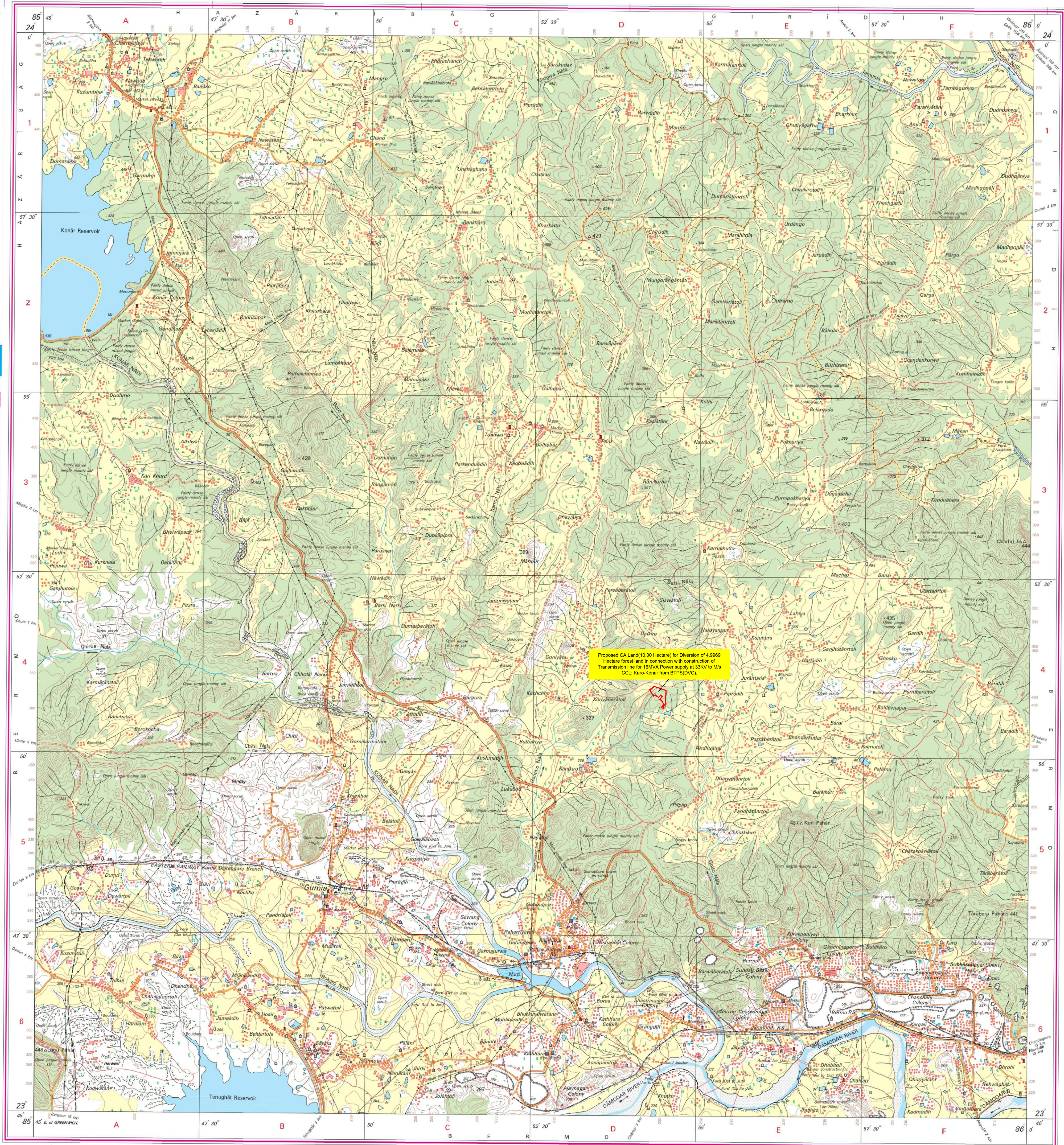
Ranchi - 834002

Fax : 0651 - 2482789

WEBSITE - www.surveyofindia.gov.in

Reproduction in whole or part by any means is prohibited
without the written permission of Survey of India, the
National Mapping Agency.

GOVERNMENT OF INDIA COPYRIGHT, 2009.



REG. No. -SPG D-59 (Jharkhand GDC-150,000-)

भारत के महामेखक के निदेशन से प्रकाशित,
Published under the direction of Surveyor General of India,
Survey of India, Hithibarkala Estate, Post Box No. 37, Dehra Dun-248001 (Uttarakhand)
Department of Science & Technology, Government of India.

PRINTED AT THE SOUTHERN PRINTING GROUP OF SURVEY OF INDIA.