

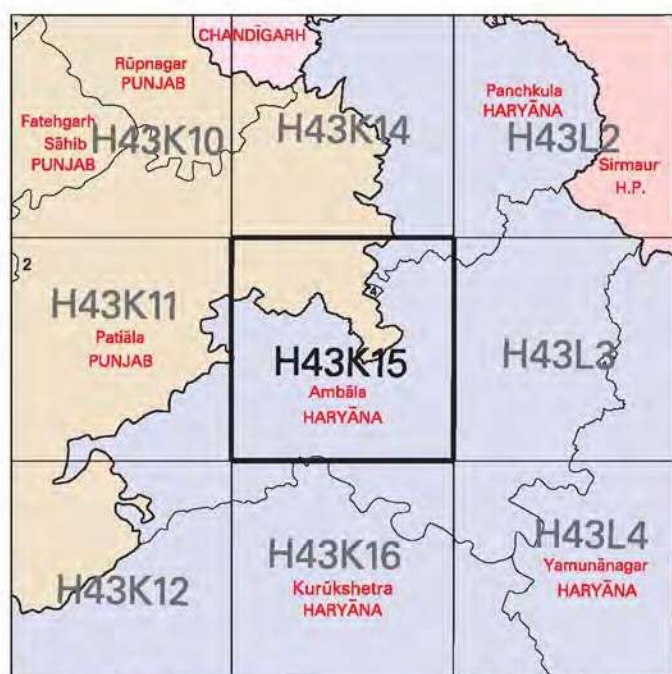


NOT FOR EXPORT

OPEN SERIES  
MAP

No. H43K15

Scale 1:50,000



1. Ropar, PUNJAB. 2. Ferozpur, PUNJAB. 3. Solan, HIMACHAL PRADESH. 4. Patiala, PUNJAB.

भारतीय सर्वेक्षण विभाग

SURVEY OF INDIA

1st Edition 2006.

Price : Rs. 50/-

#### CONVENTIONAL SYMBOLS



#### REFERENCES

NS-1 National Highway No. 1

#### NOTES :-

Heights and contours are in metres and above Indian mean sea level. Contours are approximate. The course of Ghaggar Nadi, Ghaggar and Markanda Rivers are liable to continual change owing to shifting of the river bed. Tanks shown dry, in this area usually contain water from July to March. Tube-wells are numerous throughout the sheet, only the important ones have been shown. Unmetalled roads and cart-tracks in this sheet are generally motorable in dry season. Permission to use those along canals and over embankments is required from the Irrigation authorities. The triangulated heights and contours in this sheet have not been adjusted to the heights of spirit-levelled bench-marks and may not be strictly in accordance with them. The administrative boundaries and names have been brought up-to-date to 2002. The state boundary between Punjab and Haryana States has been surveyed as pointed out by the local officials on the ground but has not been verified by the Government concerned.

#### COMPILATION INDEX

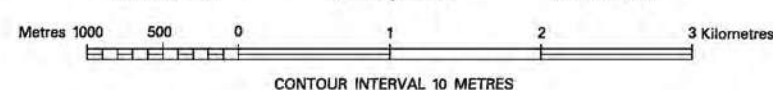
A. Compiled from 1:25,000 survey of 1997-98.



Projection - UTM Datum - WGS 84

Magnetic Variation from True North about 1° East in 2000. (Increasing by about 2' annually).

1:50,000



CONTOUR INTERVAL 10 METRES

For further details about this map, please contact

Director

Punjab & Chandigarh Geo-Spatial Data Centre

Survey of India, Sector 32 A

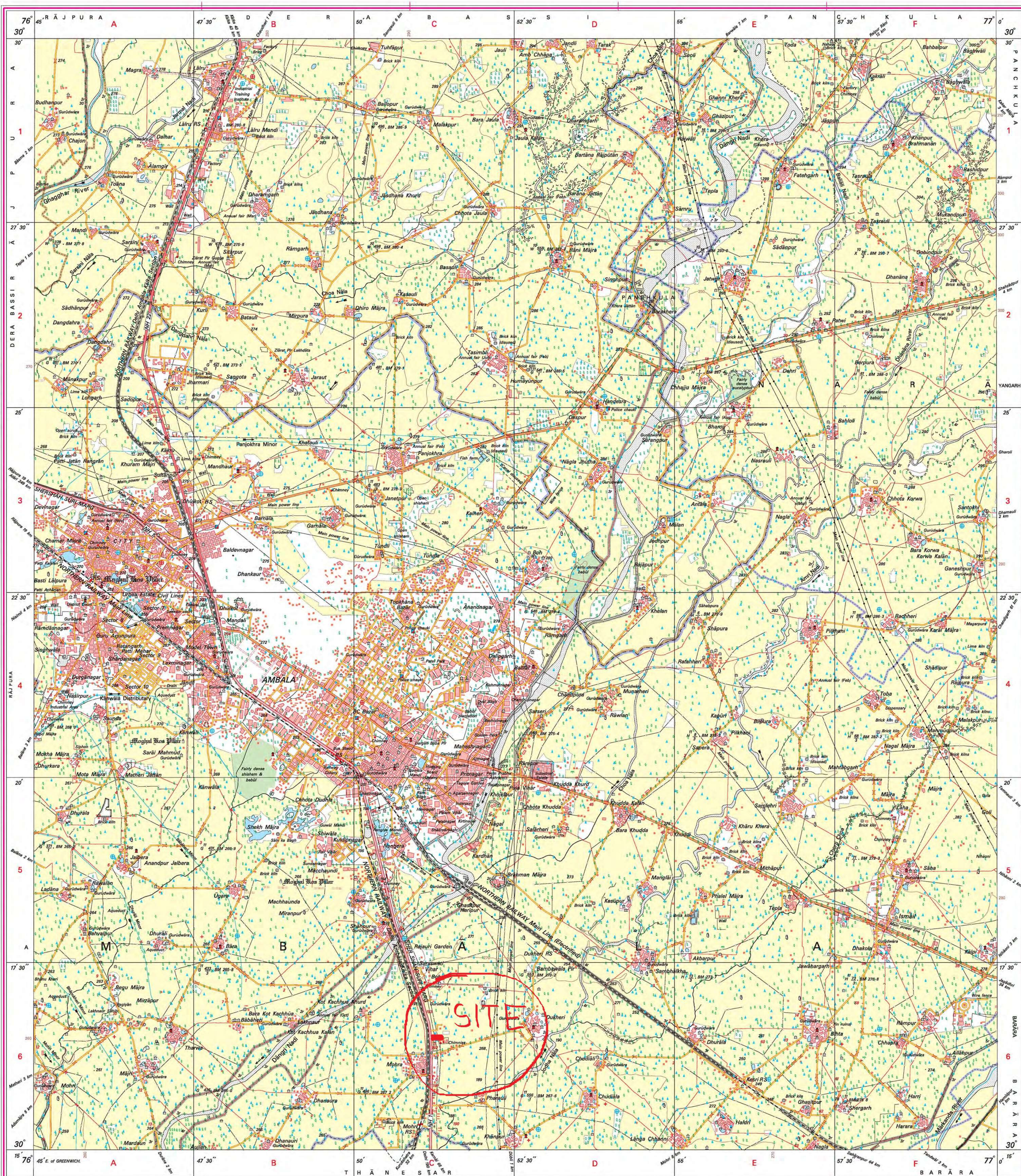
Chandigarh.

Fax : 0172 - 2606916

WEBSITE - www.surveyofindia.gov.in

Reproduction in whole or part by any means is prohibited without the written permission of Survey of India, the National Mapping Agency.

GOVERNMENT OF INDIA COPYRIGHT, 2006.



REG. No. -WPG 016 (P&C 1:50,000)

भारत के महासर्वेक्षक नेत्र जगत राम गोपाल राय, बी.टेक., पी.जी.डि. (सर्वेक्षण फोटो), एअरफोटोमेट्री, एअरफोटो, एअरफोटो, के निदेशन में तैयार किया।  
Published under the direction of Major General M. Gopal Rao, B.Tech., P.G.Dip. (Aerial Photo), MIME, MCA, FIS, Surveyor General of India,  
Survey of India, Hithibarkala Estate, Post Box No. 37, Dehra Dun - 248001 (Uttaranchal)  
Department of Science & Technology, Government of India.

PRINTED AT THE WESTERN PRINTING GROUP OF SURVEY OF INDIA.

For Mahakali Agro Ind. Pvt. Ltd.  
Auth. Sign. / Director