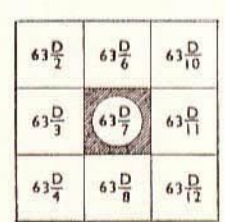


Res. No. 6111/D/77 (C.C. 43-1-33,333-3412/80-8006) B9.

- Roads, metalled: according to importance, distance, stone, 20
unmetalled: do. do. bridge
Cart track, pack-track and pass, foot-path with bridge
Bridges, with pier, without, Casseway, Trestle or Ferry
Streams, with track in both directions, Canal
Dams, masonry or rock-filled, earthwork, Weir
River banks, shelving, steep, 3 to 6 metres, over 6 metres
dry with water channel, with island & rocks, tidal river
Submerged rocks, Shoal, Swamp, Reeds
Wells, lined, unlined, Tube-well, Spring, Tanks, perennial, dry
Embankments, road or rail track, Broken ground
Railways, broad gauge, double single with station, under construction
other gauges, do. do. with distance station, do.
Mineral line, or tramway, Trolleybus line, Guttering with tunnel
Contours, with vine-forest, Rocky slopes, Cliffs
Sand features, dunes, sand hills and dunes, dunes, dunes, dunes

Index to Sheets



500 m to 1 cm
Metres 1000 500 1 2 3 4 5 6 7 8 9 10
Kilometres

HEIGHTS & CONTOURS IN METRES
CONTOUR INTERVAL 20 METRES

*Water features are shown in blue where they generally contain water.
*Cultivated areas are coloured yellow.
The exterior boundaries of areas of Reserved or Protected Forests are shown by green ribbons.
Contours are approximate.
A relative height, dr, represents the approximate height, in metres, between the top and bottom of a steep slope.
Wooded areas are coloured green. Scattered trees and other vegetation are in green, but prominent surveyed trees are in black.
*Not applicable.

The triangulated heights and contours in this sheet have not been adjusted to the heights of the spirit-levelled bench-marks, and may not be strictly in accordance with them.
The kilometre stone numbers along roads are shown in slant type, e.g. '5', whereas milestone numbers are shown in upright type, e.g. '5'.

Administrative Index



- Points at the 101 (B.L.O.) Panna Gaur or Survey of India
Towns or Villages, inhabited, deserted, Fort, Antiquities, etc.
Huts, permanent, temporary, Tower, Antiquities, etc.
Temple, Chhatra, Church, Mosque, Idgah, Tomb, Graves, etc.
Lighthouse, Lightship, Buoy, Beacon, Lighted Anchorage, etc.
Mine, Vine, or wells, Grass, Scrub
Palms, papyrus, other, Plantain, Conifer, Bamboo, Other trees, etc.
Boundary, international
state, demarcated, undemarcated
district, sub-division, taluk, or tehsil, forest
Boundary pillars, surveyed, uncoloured, village, triangulation
Heights, triangulated, station, point, approximate, BM 200, 200, 200
Bench-mark, Geodetic, tertiary, canal, etc., etc., etc., BM 63.3, BM 63.3, BM 63.3
Post office, Telegraph office, Combined office, Police station, P.O., T.O., P.T.O., P.S.
Bungalows, ash or tramway, inspection, Reservoir, etc.
Circuit house, Camping ground, Forest, reserved, protected, etc.
Spaced names: administrative, locally or tribal, etc., etc., etc., KIKRI, NAGA

1st Edition 1971.
Previous Edition on 1:63,000 scale: 1st (Provisional) 1952.

REFER TO THIS MAP AS : I:50,000
SHEET 63 D/7 FIRST EDITION
INDIA

GOVERNMENT OF INDIA, COPYRIGHT, 1971.
Price Ten Rupees.

Proposed 33 kv saleha kalda Medicine Plantation

N- 58.5 CM
E- 53.0 CM

INDIA

REFER TO THIS MAP AS - I:50,000
SHEET 63 D/11 FIRST EDITION

निर्यात के लिए नहीं NOT FOR EXPORT

FIRST EDITION

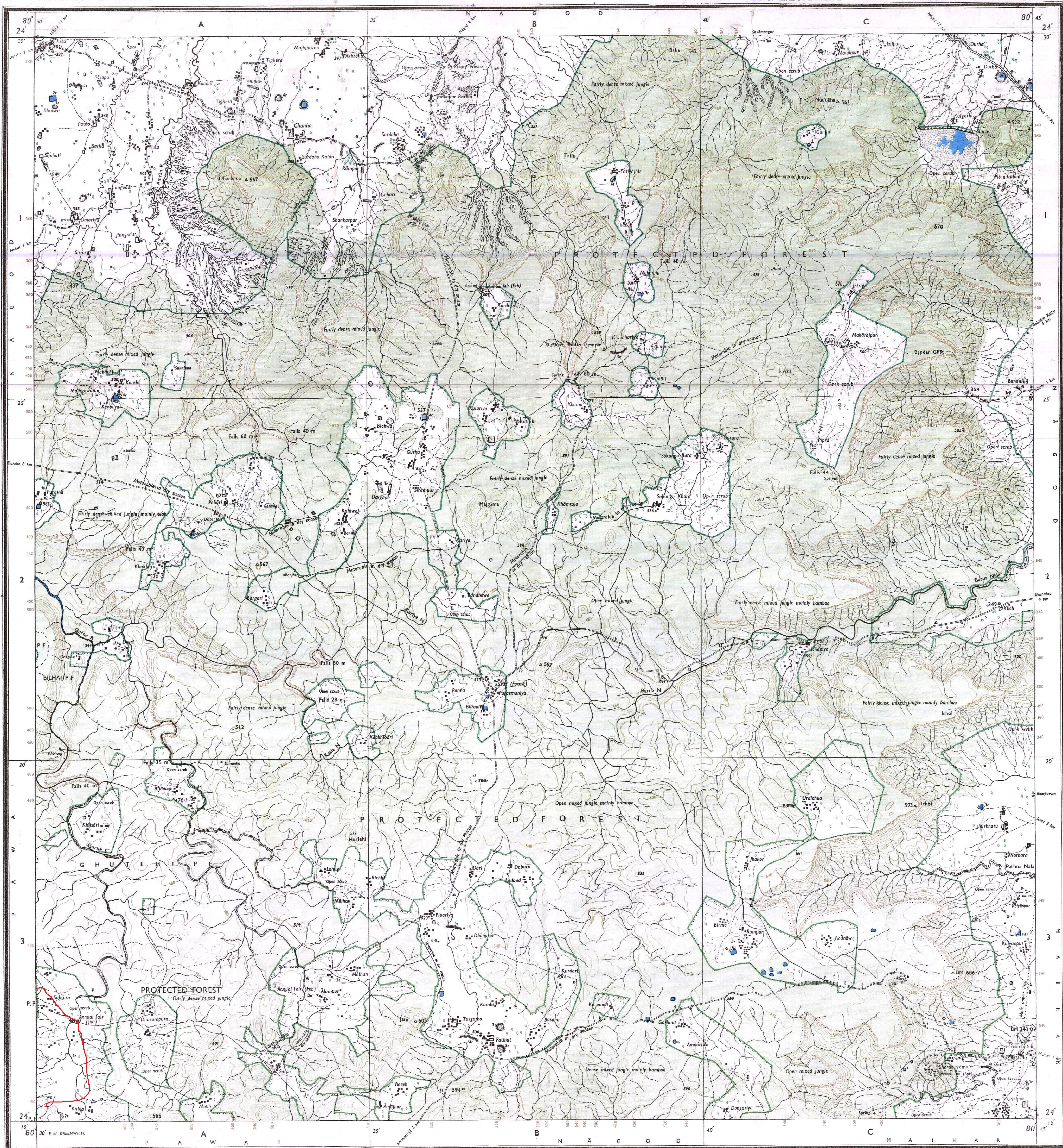
MADHYA PRADESH

NO. 63 P

PANNA & SATNA DISTRICTS.

Surveyed 1968-69.

Magnetic Variation from True North about $\frac{1}{2}^{\circ}$ West in 1970.
(Increasing by about 1" annually)



REG. No. 6617-NPG D/77/C.C.44-1.33.333-4112 80-4006 84-Printed 56/78

Roads, metalled: according to importance: distance stone	
unmetalled: do.	do.
Cart-tracks, pack-track and pass. Footpath with bridge	do.
Bridges: with piers, without. Causeway. Ford or Ferry	do.
Streams: with track in bed: undefined. Canal	do.
Dams: masonry or rock-filled: earthen: Well	do.
River banks: shelving: steep: 3 to 6 metres: over 6 metres	do.
dry with water channel: with island & rocks: tidal river	do.
Submerged rocks. Shoal. Swamp. Reeds	do.
Wells: lined: unlined: Tube-well: Spring: perennial: dry: do.	do.
Embankments: road or rail: tank: Broken ground	do.
Railways: broad gauge: double: single with station: under constn.	do.
other gauges: do. do. with distance stone: do.	do.
Mine: shaft: or underground: Telegraph line: Cutting with tunnel	do.
Contours with sub-features: Rocky slopes. Cliffs	do.
Sand features: dunes: dunes: dunes: dunes: dunes	do.

1st Edition 1971.
Previous Edition on 1-inch scale: 1st (Previous) 1952.

Index to Sheets

61 D 6	61 D 10	61 D 14
61 D 7	61 D 11	61 D 15
61 D 8	61 D 12	61 D 16

Published under the direction of Brigadier J.S. Pant, M.S., M.I.E., Surveyor General of India.

1971.
I:50,000

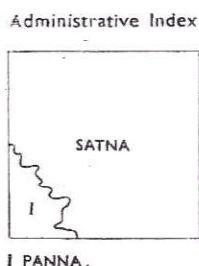
500 m to 1 cm
Metres 1000 500 0 1 2 3 4 5 6 7 Kilometres

HEIGHTS & CONTOURS IN METRES
CONTOUR INTERVAL 20 METRES

*Water features are shown in blue where they generally contain water.
*Cultivated areas are coloured yellow.
*Contours are approximate.
*A relative height, dr., represents the approximate height, in metres, between the top of a steep slope and the base of a steep slope.
*Areas are coloured green. Scattered trees and other vegetation are in green, but prominent surveyed trees are in black.

*Not applicable.

The triangulated heights and contours in this sheet have not been adjusted to the heights of the spirit-levelled bench-marks and may not be strictly in accordance with them.



I PANNA.

PRINTED AT THE NORTHERN PRINTING GROUP OF SURVEY OF INDIA

Towns or Villages: inhabited: deserted: Fort	do.
Huts: permanent: temporary: Tower: Antiquities	do.
Temple: Chhatri: Church: Mosque: Idgah: Tomb: Graves	do.
Lighthouse: Lightship: Buoy: Lighted: unlighted: Anchorage	do.
Mine: Vine: on trellis: Grass: Scrub	do.
Palms: palms: other: Plantain: Conifer: Bamboo: Other trees	do.
Boundary: international	do.
State: demarcated: undemarcated	do.
District: subdivided: taluk: forest	do.
Boundary pillars: surveyed: unlocated: village: junction	do.
Heights triangulated: station: point: approximate: BM 633	do.
Bench-mark: Goussier: tertiary: sand	do.
Post office: Telegraph office: Combined office: Police station: P.O.	do.
Bungalows: dak: or travellers: inspection: Rest-house: do.	do.
Circuit house: Camping ground: Forest: reserved: protected: CM	do.
Spaced names: administrative: locality or tribal: KIKRI	do.
NAGA	do.

GOVERNMENT OF INDIA COPYRIGHT, 1971.
Price: Twenty nine Rupees.

REFER TO THIS MAP AS - I:50,000
SHEET 63 D/11 FIRST EDITION

INDIA