

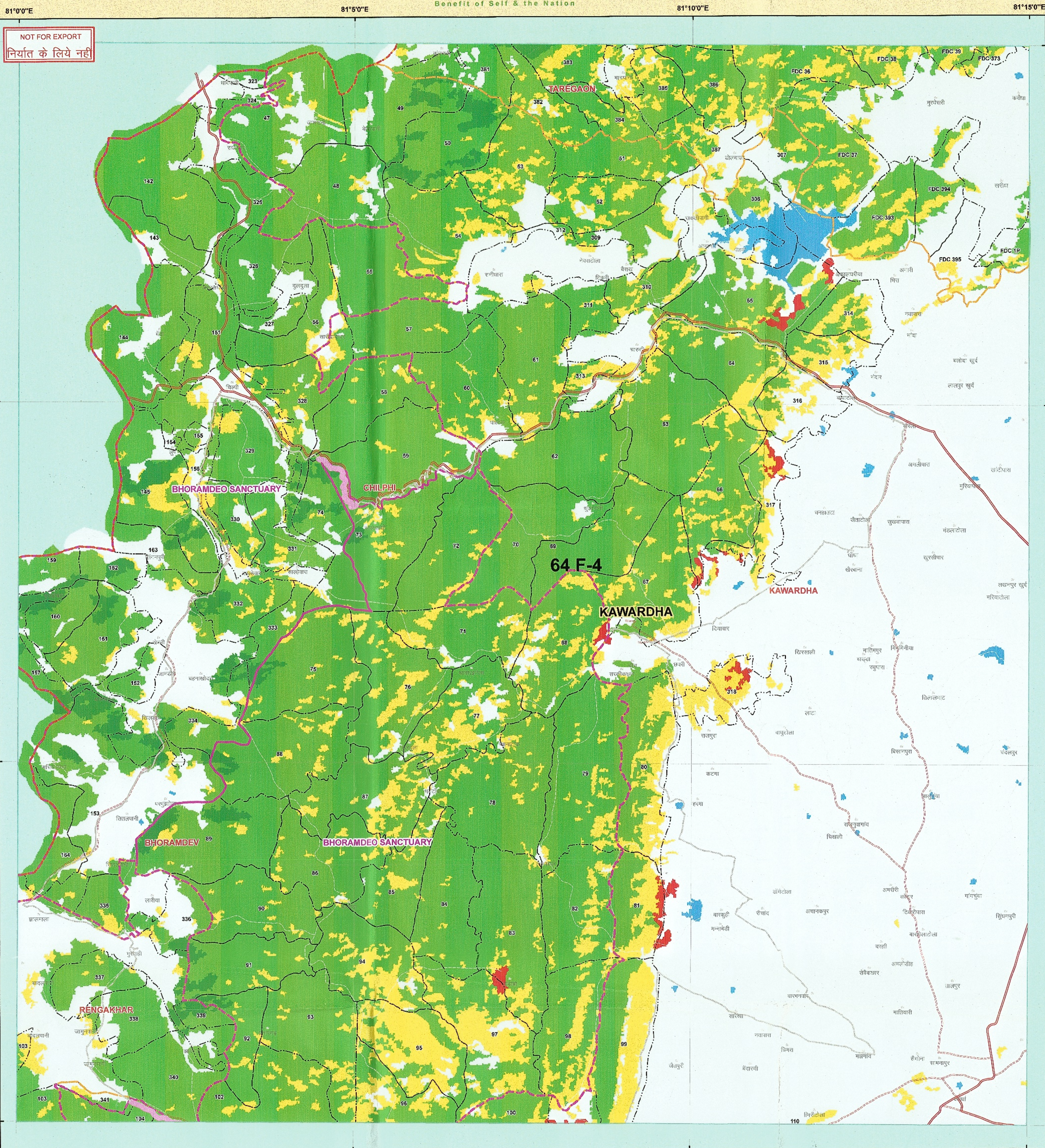
Chhattisgarh Forest Department  
Forest Cover Map  
Sheet. No. 64 F 04

वन आवरण मानचित्र

मानचित्र स्केल 1 : 50000

टोपो शीट नं. - 64/F/04

Save Trees, Save Forests and Save Wildlife for the Benefit of Self & the Nation



ROAD\_TYPE

- Cart Track
- Metalled Road
- UnMetalled Road
- DGPS\_Revenue\_Forest
- DGPS\_Forest\_Route
- DGPS\_Proposed OFC Line
- DGPS\_Revenue\_forest\_Area
- DGPS\_Forest\_Area
- 10KMBUFFER
- FOREST DIVISION REGION

Legend

- PROTECTED AREA
- FOREST RANGE REGION
- COMPARTMENT REGION
- TOWN / VILLAGE

Class\_Name

- MDF
- NON FOREST
- OPEN FOREST
- SCRUB
- VDF
- WATER

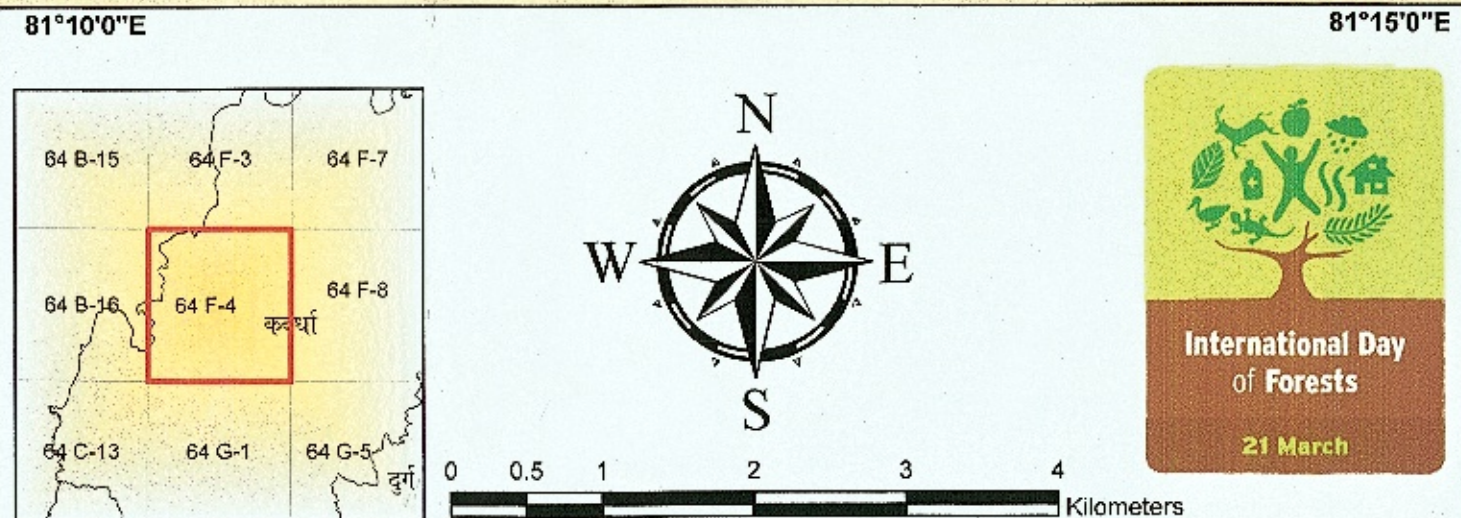
MAP PREPARED FOR:

JCEO,  
Chhattisgarh Infotech Promotion Society CHIPS,  
2nd Floor, SDC Building, Civil Line,  
Raipur (C.G.)

REG.No. : FP/CG/OFC/43124/2019

Map Subject :- Diversion of Forest Land for non-forest purpose under Forest Conservation Act, 1980 Proposed for BharatNet Phase-II Kawardha Division "BharatNet project which is a GOI initiative. Under this project, connectivity will be provided at 5,987 GPs & 85 Blocks through optic fiber cable laying of approximately 32,466 KM. The laying of Optical Fiber cable of 32,466 KM will involve 26 district across the States", area - 1.076 ha.-regarding.

Note :- Shapefile provided by user agencies.



Source :- FOREST SURVEY OF INDIA FOREST COVER CLASSIFICATION SCHEME.  
Very Dense Forest :- All land with tree cover (including Mangrove cover) of canopy density of 70 % and above.  
Moderately Dense Forest :- All land with tree cover (including Mangrove Cover) of canopy density between 40% and 70% above.  
Open Forest :- All land with tree cover (including Mangrove Cover) of canopy density between 10-40%  
Scrub :- All forest lands with poor tree growth mainly of small or stunted trees having canopy density less than 10%  
Non Forest :- Any Area not included in the above classes.

Prepared and Printed by:- GIS Cell  
Forest Management Information System Division, Raipur