

MAP SHOWING FOREST LAND REQUIREMENT OF RESSING HYDRO ELECTRIC PROJECT (6 MW) IN SAGALEE
FOREST DIVISION UNDER PAPUM PARE DISTRICT, ARUNACHAL PRADESH

83E/7,8

93°20'0"E

93°22'0"E



27°16'0"N

27°16'0"N

27°14'0"N

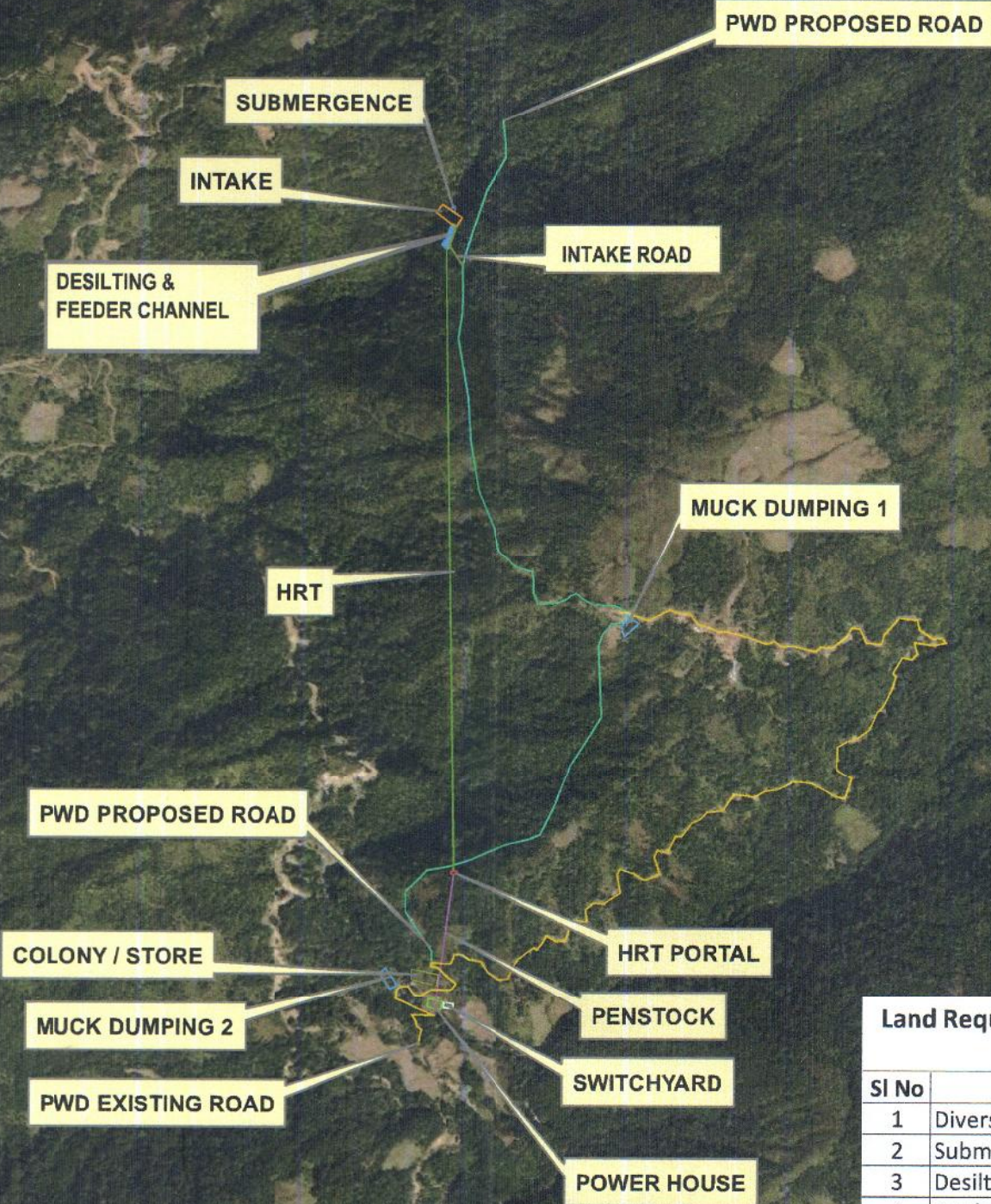
27°14'0"N

93°20'0"E

93°22'0"E

Legend 1:20,000

- RESSING_HEP_INTAKE_ROAD
- RESSING_HEP_INTAKE
- RESSING_HEP_HRT_PORTAL
- RESSING_HEP_SWITCH_YARD
- RESSING_HEP_HRT
- RESSING_HEP_SUBMERGENCE
- RESSING_HEP_EXISTING_PWD_ROAD
- RESSING_HEP_PROPOSED_PWD
- RESSING_HEP_DUMPING_2
- RESSING_HEP_DUMPING_1
- RESSING_HEP_PH
- DESILTING & FEEDER CHANNEL
- RESSING_HEP_PENSTOCK
- RESSING_HEP_COLONY_STORE



Land Requirement of Rassing Hydro Electric Project (6 MW) in Papumpare District in Arunachal Pradesh

SI No	Components	Area	Forest Land	Private Land	Total Area
1	Diversion Area	0.250	0.250	0.0	0.250
2	Submergence	0.015	0.015	0.0	0.015
3	Desilting & Feeder Channel	0.106	0.106	0.0	0.106
4	Intake Road	0.055		0.055	0.055
5	Dumping Area-I	0.138		0.138	0.138
6	Dumping Area-II	0.132		0.132	0.132
7	Penstock/HRT Portal	0.068		0.068	0.068
8	PH Road	0.033		0.033	0.033
9	Power House	0.105		0.105	0.105
10	Switch Yard	0.062		0.062	0.062
11	Colony/Workshop & Store	0.254		0.254	0.254
12	HRT	0.545	0.545	0.00	0.545
Total Area		1.762	0.916	0.847	1.762