



निर्यात के लिए नहीं NOT FOR EXPORT

OPEN SERIES
MAP

No. F44F2

Scale 1:50,000

F44E13 (64/13)	F44F1 (64M/1)	F44F5 (64M/5)
F44E14 (64/14)	F44F2 (64M/2)	F44F6 (64M/6)
F44E15 (64/15)	F44F3 (64M/3)	F44F7 (64M/7)

1. Korea, CHHATTISGARH
2. Singrauli, MADHYA PRADESH.

भारतीय सर्वेक्षण विभाग SURVEY OF INDIA

1st Edition: 2012.

Price: Rs. 77/-

CONVENTIONAL SYMBOLS

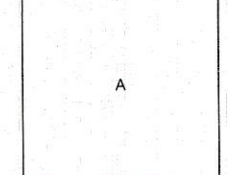
Express highway, with toll, with bridge, with distance stone	
Roads, metalled, according to importance	
Unmetalled road, Cart-track, Pack-track with pass, Foot-path	
Streams, with track in bed, undrained, Canal	
Dams, masonry or rock-filled, earthwork, Weir	
River, dry with water channel, with island & rocks, Tidal river	
Submerged rocks, Shoal, Swamp, Reeds	
Wells, lined, unlined, Tube-well, Spring, Tanks, perennial, dry	
Embankments, road or rail, tank, Broken ground	
Railways, broad gauge, double, single with station, under constr.	
Railways, other gauges, double, single with distance stone, do.	
Mineral line or tramway, KJN, Cutting with tunnel	
Contours with sub-features, Rocky slopes, Cliffs	
Sand features: (1) flat, (2) sand-hills (permanent), (3) dunes (shifting)	
Towns or Villages: inhabited, deserted, Fort	
Huts: permanent, temporary, Tower, Antiquities	
Temple, Chhatra, Church, Mosque, Idgah, Tomb, Graves	
Lighthouse, Lightship, Buoys: lighted, unlighted, Anchorage	
Mine, Vine on trellis, Grass, Scrub	
Palms, palms, other, Plantain, Conifer, Bamboo, Other trees	
Areas: cultivated, wooded, Surveyed tree	
boundary, international	
state, demarcated, undemarcated	
district, subdivision, tahsil or taluk, forest	
Boundary pillars: surveyed, unlocated	
Heights, triangulated, station, point, approximate	
Bench-mark: geodetic, tertiary, canal	
Post office, Telegraph office, Overhead tank	
Rest house or inspection bungalow, Circuit house, Police station	
Camping ground, Forest, reserved, protected	
Spaced names: administrative, locality or tribal	
Hospital, Dispensary, Veterinary, Hospital / Dispensary	
Aerodrome, Helped, Tourist site	
Power line: with pylons surveyed, with poles unsurveyed	

NOTES :-

Heights are in metres and above Indian mean sea level.
Contours are approximate.
A relative height, e.g., 40, represents the approximate height, in metres, between the top and bottom of a steep slope.
Tanks shown dry, in this area usually contain water from July to December.
The exterior boundaries of reserved or Protected Forest are shown by green ribands.
The common boundary between Pingla and Mānpura RF could not be shown for want of reliable information.

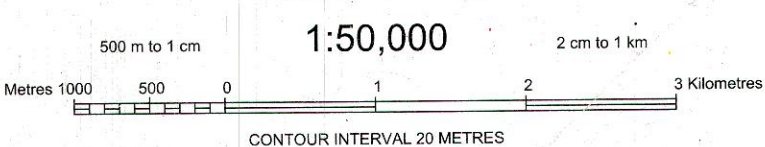
COMPILATION INDEX

A. Surveyed during 1969-70. Updated for major details during 2004-05.



Projection - UTM Datum - WGS 84

Magnetic Variation from True North about 1° West in 2005.
(Decreasing by about 1° annually)



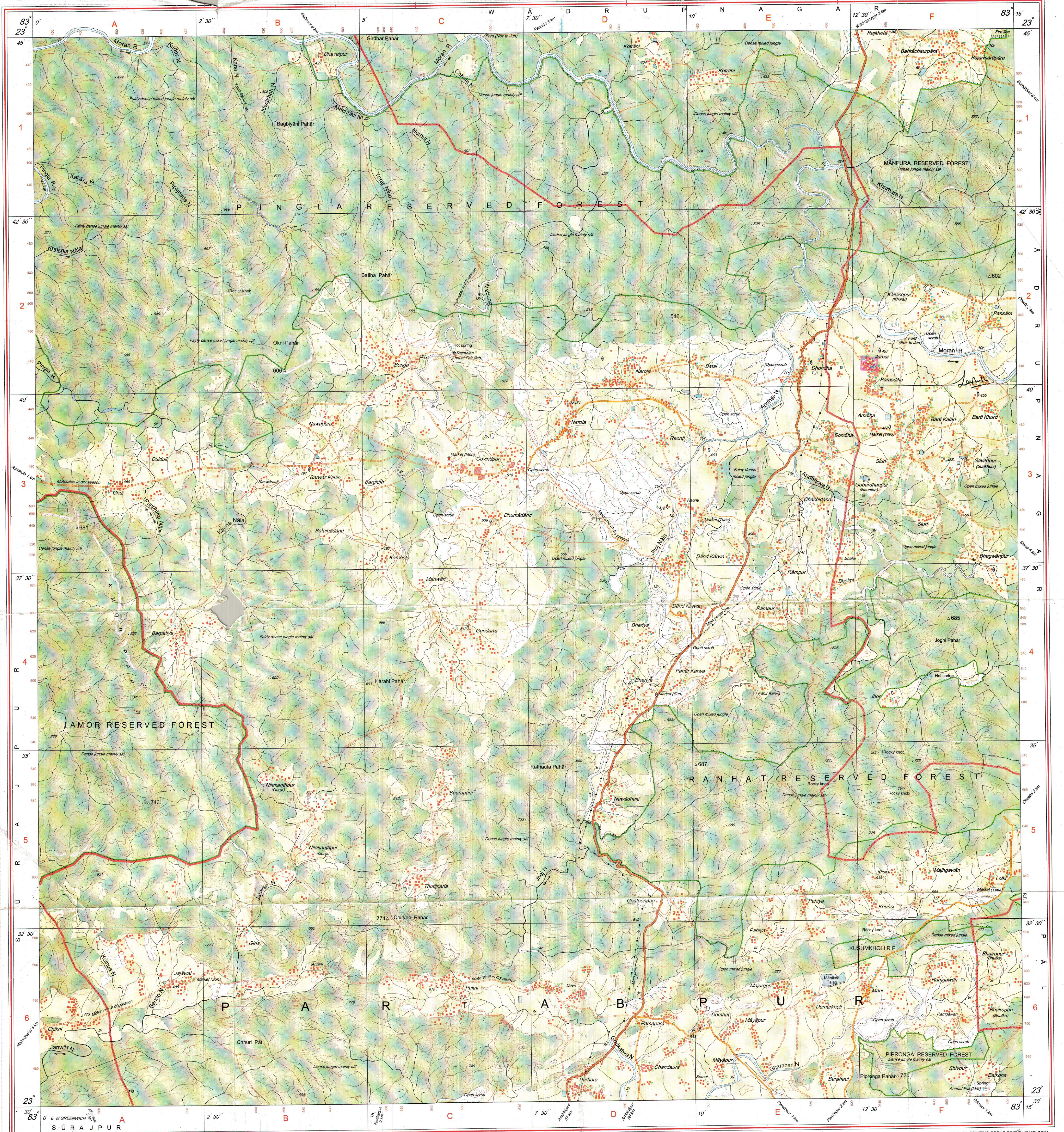
CONTOUR INTERVAL 20 METRES

For further details about this map, please contact
Director
Chhattisgarh Geo-Spatial Data Centre
Survey of India, Pachpedi Naka
Raipur.

WEBSITE - www.surveyofindia.gov.in

Reproduction in whole or part by any means is prohibited
without the written permission of Survey of India, the
National Mapping Agency.

GOVERNMENT OF INDIA COPYRIGHT, 2012



REG. No. 9390-SPG D/10 (Chhattisgarh GDC:1:50,000)-1015-12.

भारत के सर्वेक्षण के द्वारा सर्वेक्षण, के निर्देशन में प्रकाशित.
Published under the direction of Dr. Swarna Subba Rao, Surveyor General of India,
Survey of India, Hathi Barkala Estate, Post Box No. 37, Dehra Dun - 248001 (Uttarakhand),
Department of Science & Technology, Government of India.

PRINTED AT THE SOUTHERN PRINTING GROUP OF SURVEY OF INDIA.

PROPOSED AREA
Executive Engineer
Divisional Forest Officer
Balamrup Division Balamrup