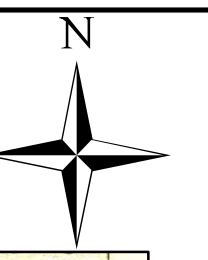


Meenakshi Odisha Power Private Ltd., Hyderabad. (Formerly Sileru Power Generation Private Ltd.)
 Details of Alternatives examined for the Forest Land required for construction of 25 MW (2 X 12.5 MW) Shaheed Lakhman Nayak
 Small Hydro Electric Scheme in Tentuligumma village, Boipariguda block, Boipariguda tehsil, Koraput District, Odisha.



MADHYA PRADESH
 ORISSA

FIRST EDITION

Magnetic Variation from True North about 1 1/2° West in 1970.
 (Decreasing by about 1' annually).

No. 65 1/2

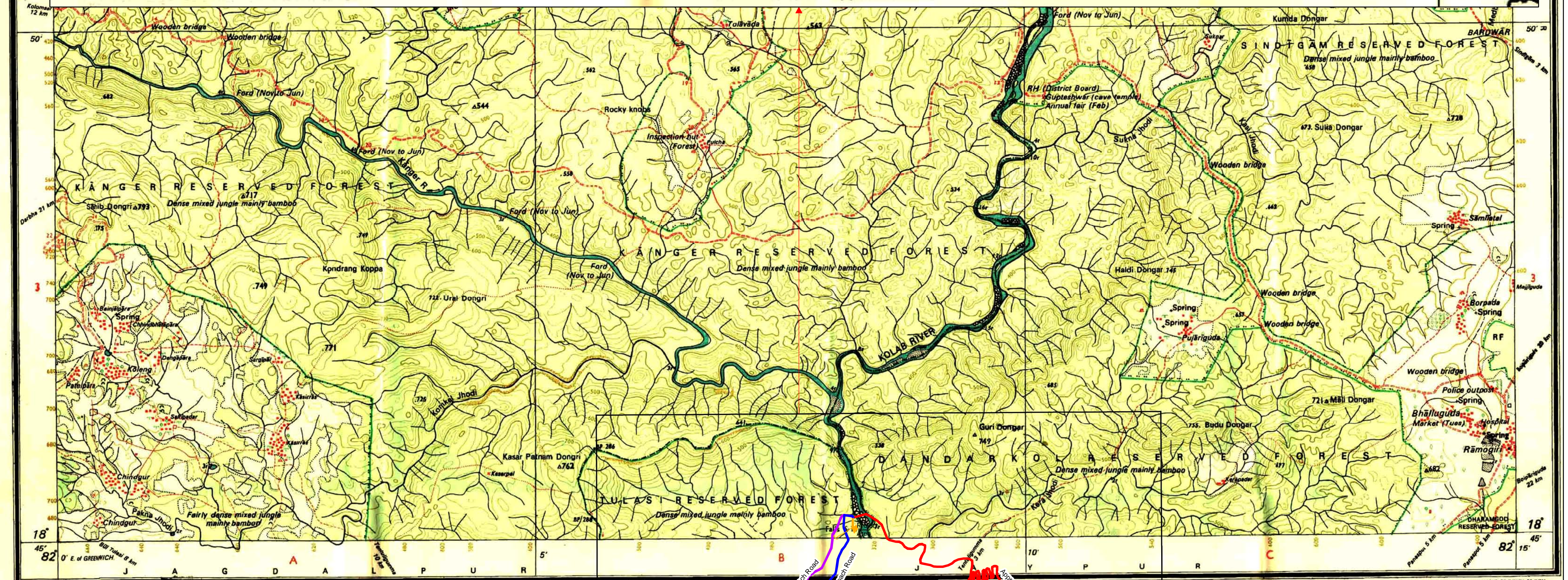
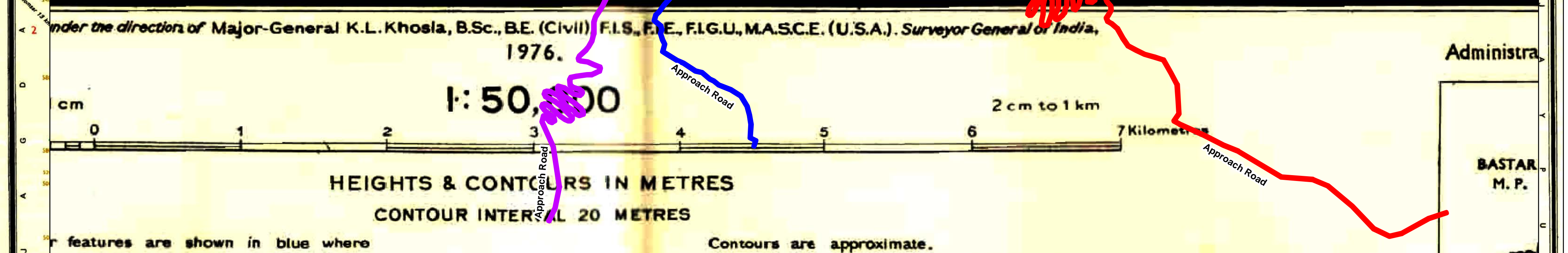
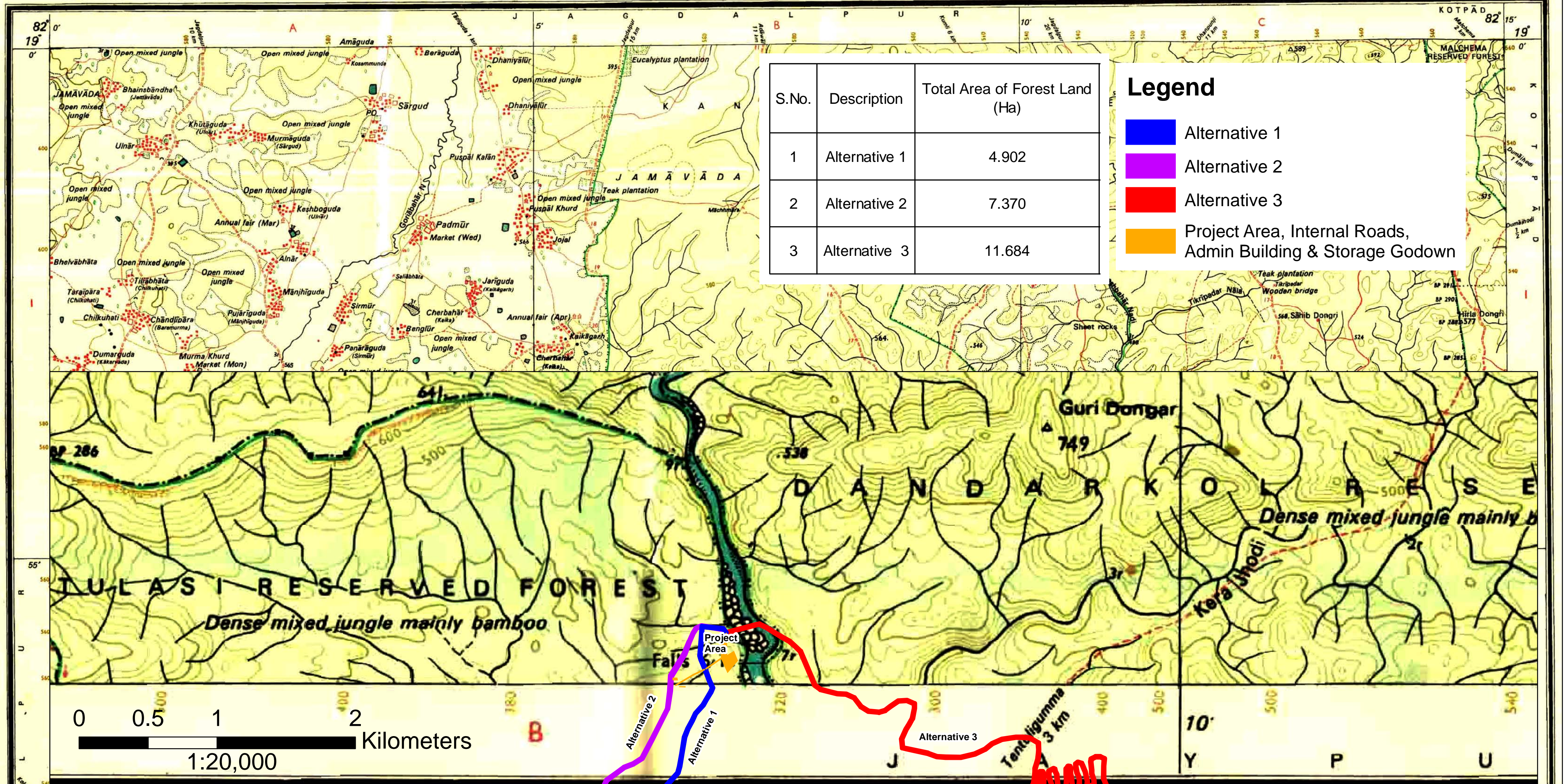
BASTAR DISTRICT.
 KORAPUT DISTRICT.

Surveyed 1972-73.

| S.No. | Description | Total Area of Forest Land (Ha) |
|-------|---------------|--------------------------------|
| 1 | Alternative 1 | 4.902 |
| 2 | Alternative 2 | 7.370 |
| 3 | Alternative 3 | 11.684 |

Legend

- Alternative 1
- Alternative 2
- Alternative 3
- Project Area, Internal Roads, Admin Building & Storage Godown



Index to Sheets

| | | |
|---------|---------|---------|
| 45° 15' | 45° 45' | 46° 15' |
| 45° 45' | 46° 15' | 46° 45' |
| 46° 15' | 46° 45' | 47° 15' |

Administrative Index

| | | |
|---------------|----------|--------------|
| 500 m to 1 cm | 1:50,000 | 2 cm to 1 km |
| 5000 | 500 | 1 |
| 1 | 2 | 3 |
| 4 | 5 | 6 |
| 7 | 8 | 9 |
| 10 | 11 | 12 |
| 13 | 14 | 15 |
| 16 | 17 | 18 |
| 19 | 20 | 21 |
| 22 | 23 | 24 |
| 25 | 26 | 27 |
| 28 | 29 | 30 |
| 31 | 32 | 33 |
| 34 | 35 | 36 |
| 37 | 38 | 39 |
| 40 | 41 | 42 |
| 43 | 44 | 45 |
| 46 | 47 | 48 |
| 49 | 50 | 51 |
| 52 | 53 | 54 |
| 55 | 56 | 57 |
| 58 | 59 | 60 |
| 61 | 62 | 63 |
| 64 | 65 | 66 |
| 67 | 68 | 69 |
| 70 | 71 | 72 |
| 73 | 74 | 75 |
| 76 | 77 | 78 |
| 79 | 80 | 81 |
| 82 | 83 | 84 |
| 85 | 86 | 87 |
| 88 | 89 | 90 |
| 91 | 92 | 93 |
| 94 | 95 | 96 |
| 97 | 98 | 99 |
| 100 | 101 | 102 |
| 103 | 104 | 105 |
| 106 | 107 | 108 |
| 109 | 110 | 111 |
| 112 | 113 | 114 |
| 115 | 116 | 117 |
| 118 | 119 | 120 |
| 121 | 122 | 123 |
| 124 | 125 | 126 |
| 127 | 128 | 129 |
| 130 | 131 | 132 |
| 133 | 134 | 135 |
| 136 | 137 | 138 |
| 139 | 140 | 141 |
| 142 | 143 | 144 |
| 145 | 146 | 147 |
| 148 | 149 | 150 |
| 151 | 152 | 153 |
| 154 | 155 | 156 |
| 157 | 158 | 159 |
| 160 | 161 | 162 |
| 163 | 164 | 165 |
| 166 | 167 | 168 |
| 169 | 170 | 171 |
| 172 | 173 | 174 |
| 175 | 176 | 177 |
| 178 | 179 | 180 |
| 181 | 182 | 183 |
| 184 | 185 | 186 |
| 187 | 188 | 189 |
| 190 | 191 | 192 |
| 193 | 194 | 195 |
| 196 | 197 | 198 |
| 199 | 200 | 201 |
| 202 | 203 | 204 |
| 205 | 206 | 207 |
| 208 | 209 | 210 |
| 211 | 212 | 213 |
| 214 | 215 | 216 |
| 217 | 218 | 219 |
| 220 | 221 | 222 |
| 223 | 224 | 225 |
| 226 | 227 | 228 |
| 229 | 230 | 231 |
| 232 | 233 | 234 |
| 235 | 236 | 237 |
| 238 | 239 | 240 |
| 241 | 242 | 243 |
| 244 | 245 | 246 |
| 247 | 248 | 249 |
| 250 | 251 | 252 |
| 253 | 254 | 255 |
| 256 | 257 | 258 |
| 259 | 260 | 261 |
| 262 | 263 | 264 |
| 265 | 266 | 267 |
| 268 | 269 | 270 |
| 271 | 272 | 273 |
| 274 | 275 | 276 |
| 277 | 278 | 279 |
| 280 | 281 | 282 |
| 283 | 284 | 285 |
| 286 | 287 | 288 |
| 289 | 290 | 291 |
| 292 | 293 | 294 |
| 295 | 296 | 297 |
| 298 | 299 | 300 |
| 301 | 302 | 303 |
| 304 | 305 | 306 |
| 307 | 308 | 309 |
| 310 | 311 | 312 |
| 313 | 314 | 315 |
| 316 | 317 | 318 |
| 319 | 320 | 321 |
| 322 | 323 | 324 |
| 325 | 326 | 327 |
| 328 | 329 | 330 |
| 331 | 332 | 333 |
| 334 | 335 | 336 |
| 337 | 338 | 339 |
| 340 | 341 | 342 |
| 343 | 344 | 345 |
| 346 | 347 | 348 |
| 349 | 350 | 351 |
| 352 | 353 | 354 |
| 355 | 356 | 357 |
| 358 | 359 | 360 |
| 361 | 362 | 363 |
| 364 | 365 | 366 |
| 367 | 368 | 369 |
| 370 | 371 | 372 |
| 373 | 374 | 375 |
| 376 | 377 | 378 |
| 379 | 380 | 381 |
| 382 | 383 | 384 |
| 385 | 386 | 387 |
| 388 | 389 | 390 |
| 391 | 392 | 393 |
| 394 | 395 | 396 |
| 397 | 398 | 399 |
| 400 | 401 | 402 |
| 403 | 404 | 405 |
| 406 | 407 | 408 |
| 409 | 410 | 411 |
| 412 | 413 | 414 |
| 415 | 416 | 417 |
| 418 | 419 | 420 |
| 421 | 422 | 423 |
| 424 | 425 | 426 |
| 427 | 428 | 429 |
| 430 | 431 | 432 |
| 433 | 434 | 435 |
| 436 | 437 | 438 |
| 439 | 440 | 441 |
| 442 | 443 | 444 |
| 445 | 446 | 447 |
| 448 | 449 | 450 |
| 451 | 452 | 453 |
| 454 | 455 | 456 |
| 457 | 458 | 459 |
| 460 | 461 | 462 |
| 463 | 464 | 465 |
| 466 | 467 | 468 |
| 469 | 470 | 471 |
| 472 | 473 | 474 |
| 475 | 476 | 477 |
| 478 | 479 | 480 |
| 481 | 482 | 483 |
| 484 | 485 | 486 |
| 487 | 488 | 489 |
| 490 | 491 | 492 |
| 493 | 494 | 495 |
| 496 | 497 | 498 |
| 499 | 500 | 501 |
| 502 | 503 | 504 |
| 505 | 506 | 507 |
| 508 | 509 | 510 |
| 511 | 512 | 513 |
| 514 | 515 | 516 |
| 517 | 518 | 519 |
| 520 | 521 | 522 |
| 523 | 524 | 525 |
| 526 | 527 | 528 |
| 529 | 530 | 531 |
| 532 | 533 | 534 |
| 535 | 536 | 537 |
| 538 | 539 | 540 |
| 541 | 542 | 543 |
| 544 | 545 | 546 |
| 547 | 548 | 549 |
| 550 | 551 | 552 |
| 553 | 554 | 555 |
| 556 | 557 | 558 |
| 559 | 560 | 561 |
| 562 | 563 | 564 |
| 565 | 566 | 567 |
| 568 | 569 | 570 |
| 571 | 572 | 573 |
| 574 | 575 | 576 |
| 577 | 578 | 579 |
| 580 | 581 | 582 |
| 583 | 584 | 585 |
| 586 | 587 | 588 |
| 589 | 590 | 591 |
| 592 | 593 | 594 |
| 595 | 596 | 597 |
| 598 | 599 | 600 |
| 601 | 602 | 603 |
| 604 | 605 | 606 |
| 607 | 608 | 609 |
| 610 | 611 | 612 |
| 613 | 614 | 615 |
| 616 | 617 | 618 |
| 619 | 620 | 621 |
| 622 | 623 | 624 |
| 625 | 626 | 627 |
| 628 | 629 | 630 |
| 631 | 632 | 633 |
| 634 | 635 | 636 |
| 637 | 638 | 639 |
| 640 | 641 | 642 |
| 643 | 644 | 645 |
| 646 | 647 | 648 |
| 649 | 650 | 651 |
| 652 | 653 | 654 |
| 655 | 656 | 657 |
| 658 | 659 | 660 |
| 661 | 662 | 663 |
| 664 | 665 | 666 |
| 667 | 668 | 669 |
| 670 | 671 | 672 |
| 673 | 674 | 675 |
| 676 | 677 | 678 |
| 679 | 680 | 681 |
| 682 | 683 | 684 |
| 685 | 686 | 687 |
| 688 | 689 | 690 |
| 691 | 692 | 693 |
| 694 | 695 | 696 |
| 697 | 698 | 699 |
| 700 | 701 | 702 |
| 703 | 704 | 705 |
| 706 | 707 | 708 |
| 709 | 710 | 711 |
| 712 | 713 | 714 |
| 715 | 716 | 717 |
| 718 | 719 | 720 |
| 721 | 722 | 723 |
| 724 | 725 | 726 |
| 727 | 728 | 729 |
| 730 | 731 | 732 |
| 733 | 734 | 735 |
| 736 | 737 | 738 |
| 739 | 740 | 741 |
| 742 | 743 | 744 |
| 745 | 746 | 747 |
| 748 | 749 | 750 |
| 751 | 752 | 753 |
| 754 | 755 | 756 |
| 757 | 758 | 759 |
| 760 | 761 | 762 |
| 763 | 764 | 765 |
| 766 | 767 | 768 |
| 769 | 770 | 771 |
| 772 | 773 | 774 |
| 775 | 776 | 777 |
| 778 | 779 | 780 |
| 781 | 782 | 783 |
| 784 | 785 | 786 |
| 787 | 788 | 789 |
| 790 | 791 | 792 |
| 793 | 794 | 795 |
| 796 | 797 | 798 |
| 799 | 800 | 801 |
| 802 | 803 | 804 |
| 805 | 806 | 807 |
| 808 | 809 | 810 |
| 811 | 812 | 813 |
| 814 | 815 | 816 |
| 817 | 818 | 819 |
| 820 | 821 | 822 |
| 823 | 824 | 825 |
| 826 | 827 | 828 |
| 829 | 830 | 831 |
| 832 | 833 | 834 |
| 835 | 836 | 837 |
| 838 | 839 | 840 |
| 841 | 842 | 843 |
| 844 | 845 | 846 |
| 847 | 848 | 849 |
| 850 | 851 | 852 |
| 853 | 854 | 855 |
| 856 | 857 | 858 |
| 859 | 860 | 861 |
| 862 | 863 | 864 |
| 865 | 866 | 867 |
| 868 | 869 | 870 |
| 871 | 872 | 873 |
| 874 | 875 | 876 |
| 877 | 878 | 879 |
| 880 | 881 | 882 |
| 883 | 884 | 885 |
| 886 | 887 | 888 |
| 889 | 890 | 891 |
| 892 | 893 | 894 |
| 895 | 896 | 897 |
| 898 | 899 | 900 |
| 901 | 902 | 903 |
| 904 | 905 | 906 |
| 907 | 908 | 909 |
| 910 | 911 | 912 |
| 913 | 914 | 915 |
| 916 | 917 | 918 |
| 919 | 920 | 921 |
| 922 | 923 | 924 |
| 925 | 926 | 927 |
| 928 | 929 | 930 |
| 931 | 932 | 933 |
| 934 | 935 | 936 |
| 937 | 938 | 939 |
| 940 | 941 | 942 |
| 943 | 944 | 945 |
| 946 | 947 | 948 |
| 949 | 950 | 951 |
| 952 | 953 | 954 |
| 955 | 956 | 957 |
| 958 | 959 | 960 |

Meenakshi Odisha Power Private Ltd., Hyderabad. (Formerly Sileru Power Generation Private Ltd.)
 Details of Alternatives examined for the Forest Land required for construction of 25 MW (2 X 12.5 MW) Shaheed Lakhman Nayak
 Small Hydro Electric Scheme in Tentuligumma village, Boipariguda block, Boipariguda tehsil, Koraput District, Odisha.



मध्य प्रदेश, उड़ीसा

MADHYA PRADESH, ORISSA

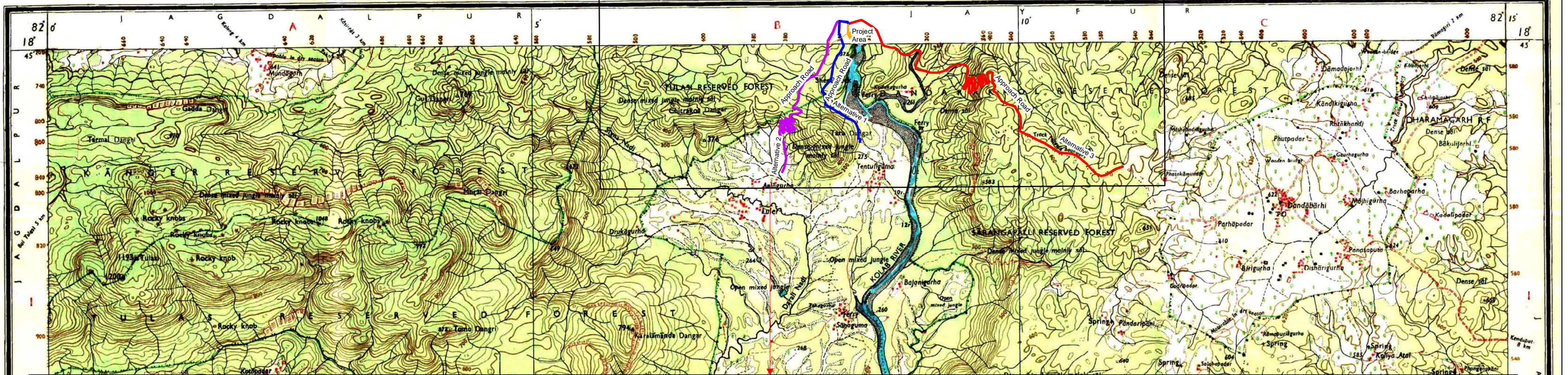
FIRST EDITION

Magnetic Variation from True North about 1 1/2° West in 1975.
 (Decreasing by about 1 annually)

No. 65 1/2

BASTAR DISTRICT.
 KORAPUT DISTRICT.

Surveyed 1977-78.
 (Also see foot-note)



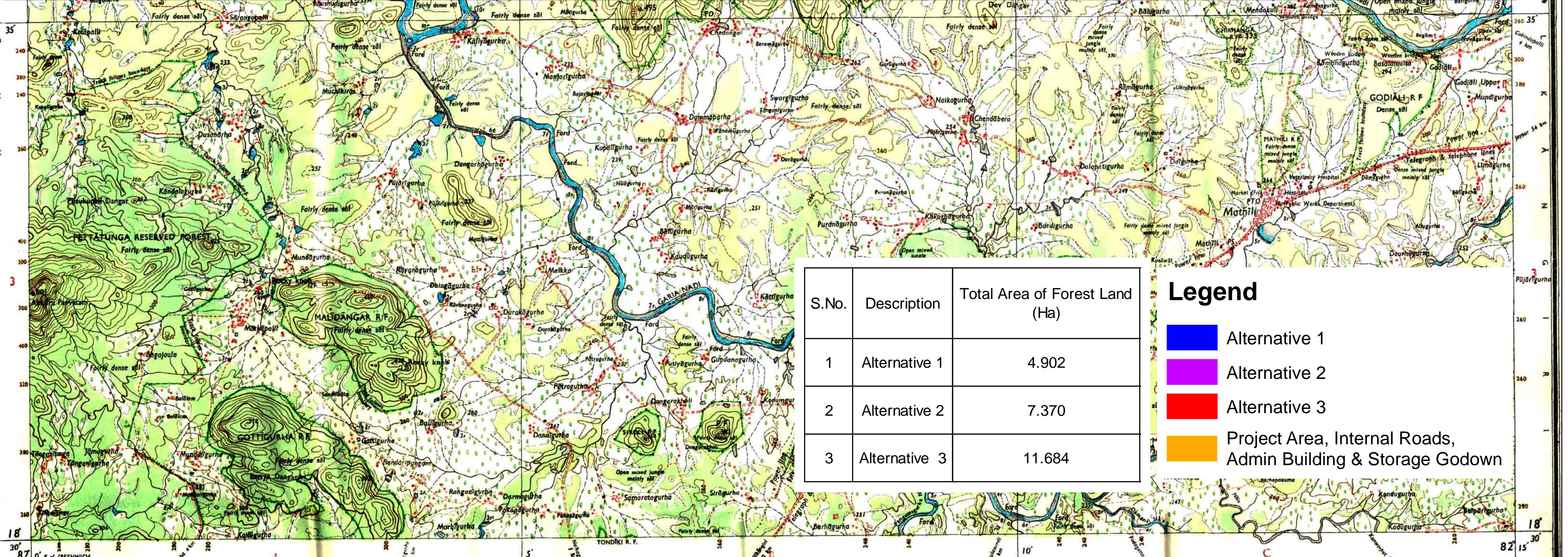
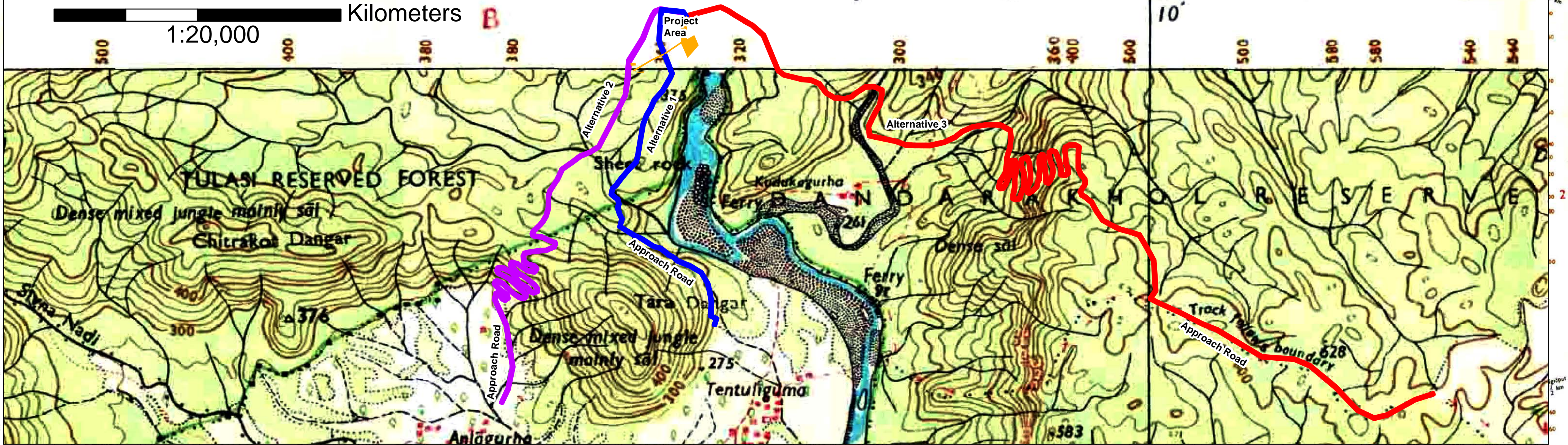
मध्य प्रदेश, उड़ीसा

MADHYA PRADESH, ORISSA

FIRST EDITION

Magnetic Variation from True North about 1 1/2° West in 1975.
 (Decreasing by about 1 annually)

0 0.5 1 2 Kilometers
 1:20,000



| S.No. | Description | Total Area of Forest Land (Ha) |
|-------|---------------|--------------------------------|
| 1 | Alternative 1 | 4.902 |
| 2 | Alternative 2 | 7.370 |
| 3 | Alternative 3 | 11.684 |

Legend

- █ Alternative 1
- █ Alternative 2
- █ Alternative 3
- █ Project Area, Internal Roads, Admin Building & Storage Godown

Revised Edition 1982.
 Previous Edition on 1:50,000 scale: 1st 1933, 2nd 1945.

| Symbol | Description |
|----------|--|
| [Symbol] | Roads metalled according to importance, distance stone unmetalled, etc. |
| [Symbol] | Cart-track, Path-track and pass. Foot-path with bridge. |
| [Symbol] | Bridges with parapet, Causeway, Ford or Ferry. |
| [Symbol] | Streams with track in bed, undefined. Canal. |
| [Symbol] | Dams: masonry or rock filled earthwork. Weir. |
| [Symbol] | River banks: shaly, steep, 3 to 6 metres; over 6 metres. |
| [Symbol] | Shaly with water channel, with island & rocky tidal river. |
| [Symbol] | Submerged rocks, Shoal, Swamp, Reeds. |
| [Symbol] | Wells used, unlined tube-well, Spring, Tank, Perennial, dry. |
| [Symbol] | Embankments: road-rail, tank, Broken ground. |
| [Symbol] | Railways: broad gauge, double single with station under construction, other gauges, do. do. with distance stone. |
| [Symbol] | Mineral line or tramway. Telegraph line. Casing with line. |
| [Symbol] | Contours with sub-features. Rocky slopes. Cliffs. |
| [Symbol] | Sand features on official, sand hills and dunes, rocky, shaly, shaly dunes. |

Index to Sheets

| | | |
|--------|--------|--------|
| 65 1/3 | 65 1/2 | 65 2/3 |
| 65 1/4 | 65 1/2 | 65 2/3 |
| 65 1/5 | 65 1/2 | 65 2/3 |

500 m to 1 cm
 1:50,000
 2 cm to 1 km

HEIGHTS & CONTOURS IN METRES
 CONTOUR INTERVAL 20 METRES

* Water features are shown in blue where they generally contain water.
 * Cultivated areas are coloured yellow.
 * The exterior boundaries of areas of Reserved or Protected Forests are shown by green ribbons.
 * Contours are approximate.
 * A relative height, 'R', represents the approximate height in metres, between the top and bottom of a steep slope.
 * Wooded areas are coloured green. Scattered trees and other vegetation are in green, but prominent surveyed trees are in black.
 * Not applicable

Administrative Index



Printed at the 102/PLD, Planning Group or Surveyor General's Office.

| | |
|----------|---|
| [Symbol] | Towns or Villages: inhabited, deserted, Fort. |
| [Symbol] | Huts: permanent, temporary, Tower, Antiquities. |
| [Symbol] | Temple, Chhatri, Church, Mosque, Idgh, Tomb, Graves. |
| [Symbol] | Lighthouse, Lightship, Buoy, Lighted, unlighted, Anchorage. |
| [Symbol] | Bench-mark, Geodesic, levelling, aneroid, BM 43-3, BM 43-3, BM 43-3. |
| [Symbol] | Mine, Mine on earth, Grass, Scrub, etc. |
| [Symbol] | Palms, palm grove, Plantain, Conifer, Bamboo, Other trees. |
| [Symbol] | Boundary: international. |
| [Symbol] | state: demarcated, undemarcated. |
| [Symbol] | district: sub-divisional or taluk: forest. |
| [Symbol] | Boundary pillars: surveyed, unlocated, village: triangulation. |
| [Symbol] | Height: triangulation, station, point, approximate. |
| [Symbol] | Bench-mark: Geodesic, levelling, aneroid, BM 43-3, BM 43-3, BM 43-3. |
| [Symbol] | Post office, Telegraph office, Combined office, Police station, P.O. TO P.T.O. P.S. |
| [Symbol] | Bungalow, dak or travellers' inspection, Rest-house. |
| [Symbol] | DB 18 (Canal) RH (Forest) Circuit house, Camping ground, Forest: reserved, protected, CH, CE, RF, PF. |
| [Symbol] | Spaced names: administrative, locality or tribal. |
| [Symbol] | KIKRI |
| [Symbol] | NAGA |

The state boundary between Madhya Pradesh and Orissa States has been surveyed as pointed out by the local officials on the ground, but has not been verified by the Government of Orissa.
 Forest boundary pillars are in the form of conspicuous rivets made of loose stone with wooden poles; centrally embedded and shown along a portion of taluk boundary line.
 Unmetalled roads in this sheet, against which there is no descriptive remark, are generally motorable in dry season.
 Rivers are generally fordable from 1st October to June.
 Tanks shown dry in this area usually contain water from July to October.

GOVERNMENT OF INDIA COPYRIGHT, 1982.
 Price: Ten Rupees.

REFER TO THIS MAP AS: 1:50,000
 SHEET 65 1/2 FIRST EDITION