

No. F43A2

Scale 1:50,000

Banās Kāntha GUJARAT F42F13 (41M/13)	F43A1 (46A/1) Pātan GUJARAT	F43A5 (46A/5)
F42F14 (41M/14)	F43A2 (46A/2)	F43A6 (46A/6) Mahesāna GUJARAT
F42F15 (41M/15)	F43A3 (46A/3) Ahmedābād GUJARAT	F43A7 (46A/7)

1 Gāndhinagar, GUJARAT.
2 Banās Kāntha, GUJARAT.
3 Surendranagar, GUJARAT.

भारतीय सर्वेक्षण विभाग SURVEY OF INDIA

1st Edition 2011.

Price : Rs. 70/-

CONVENTIONAL SYMBOLS

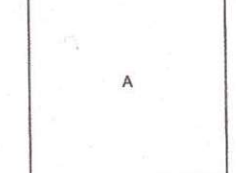
Express highway, with toll, with bridge, with distance stone	
Roads, metalled, according to importance	
Roads, double carriageway, according to importance	
Unmetalled road, Cart-track, Pack-track with pass, Foot-path	
Streams, with track in bed, undefined, Canal	
Dams, masonry or rock-filled, earthenwork, Weir	
River, dry with water channel, with island & rocks, Tidal river	
Submerged rocks, Shoal, Swamp, Reeds	
Wells, lined, unlined, Tube-well, Spring, Tanks, perennial, dry	
Embankments, road or rail, tank, Broken ground	
Railways, broad gauge, double, single with distance stone, do	
Mineral line or tramway, Kin, Cutting with tunnel	
Contours with sub-features, Rocky slopes, Cliffs	
Sand features: (1) flat, (2) sand-hills (permanent), (3) dunes (shifting)	
Towns or Villages: inhabited, deserted, Fort	
Hills: permanent, temporary, Tower, Antiquities	
Temple, Chhatra, Church, Mosque, Idgah, Tomb, Graves	
Lighthouse, Lightship, Buoy: lighted, unlighted, Anchorage	
Mine, Vine on trellis, Grass, Scrub	
Palms: palmyra, other, Plantain, Conifer, Bamboo, Other trees	
Areas: cultivated, wooded, Surveyed tree	
Boundary, international	
state: demarcated, undemarcated	
district, subdivision, taluk or taluk, forest	
Boundary pillars: surveyed, unlocated	
Heights, triangulated, station, point: approximate	
Bench-mark, geodetic, tertiary, canal	
Post office, Telegraph office, Overhead tank	
Rest house or inspection bungalow, Circuit house, Police station	
Camping ground, Forest, reserved, protected	
Spaced names: administrative, locality or tribal	
Hospital, Dispensary, Veterinary, Hospital / Dispensary	
Aerodrome, Heliport, Tourist site	
Power line, with pylons surveyed, with poles unsurveyed	

NOTES :-

Heights are in metres and above Indian mean sea level.
Contours are approximate.
A relative height, e.g., 20, represents the approximate height, in metres, between the top and bottom of a steep slope.
The triangulated heights and contours in this sheet have not been adjusted to the heights of the spirit-levelled bench-marks and may not be strictly in accordance with them.
Cart-tracks in this sheet against which there is no descriptive remarks are generally motorable (four-wheel drive) in dry season.
Tanks, shown dry, in this area usually contain water from July to November.
In areas, where no tube-wells exist, cultivation is periodic and dependent on rainfall.

COMPILATION INDEX

A Surveyed during 1961-62. Updated for major details during 2005-06.



Projection - UTM Datum - WGS 84

Magnetic Variation from True North about 1° West in 2005.
(Decreasing by about 1' annually).

1:50,000

500 m to 1 cm
2 cm to 1 km
Metres 1000 500 0 1 2 3 Kilometres

CONTOUR INTERVAL 20 METRES

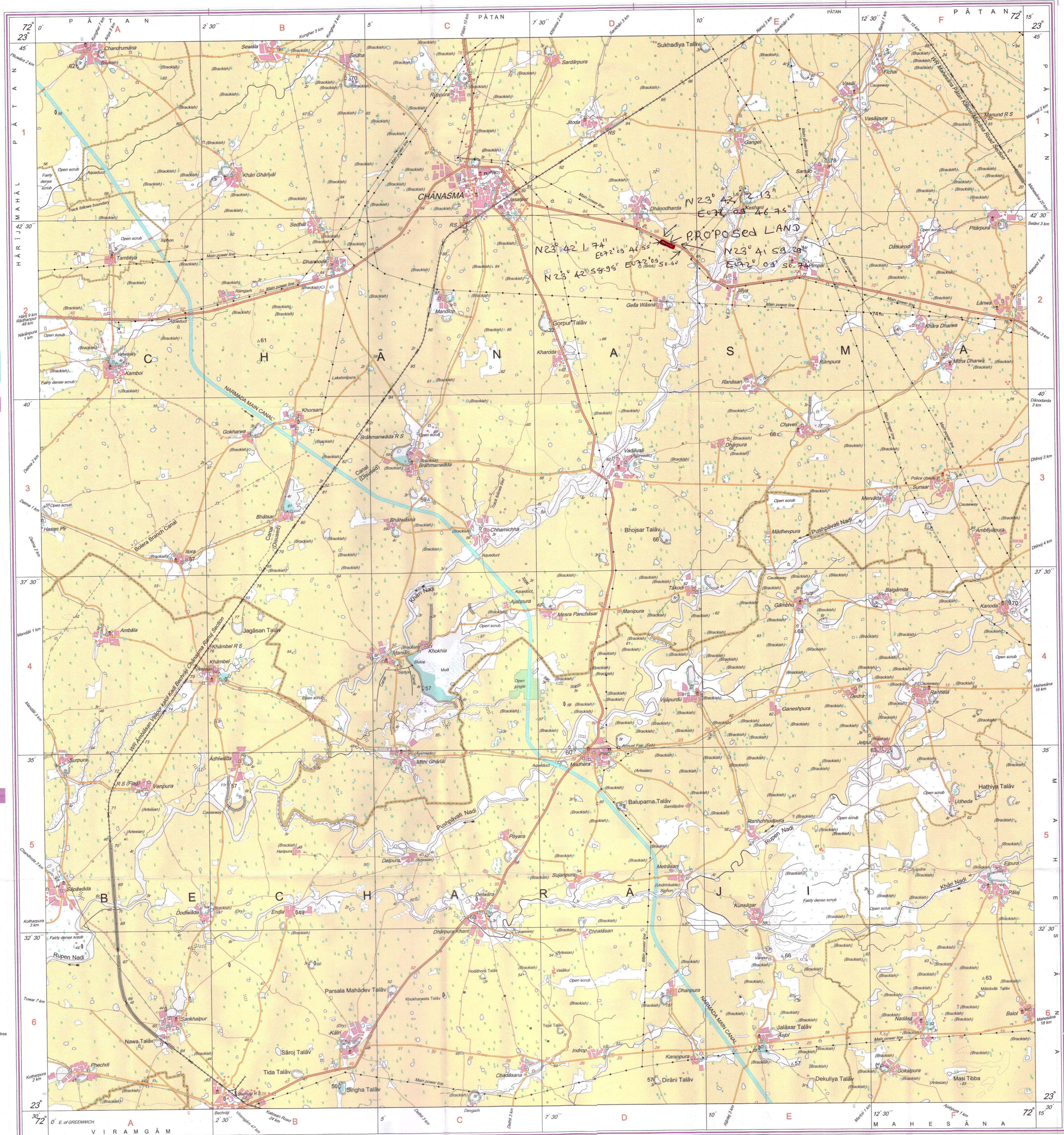
For further details about this map, please contact

Director
Gujarat, Damān & Diu Geo-Spatial Data Centre
Survey of India, Sector 10(A)
Gāndhinagar.

WEBSITE - www.surveyofindia.gov.in

Reproduction in whole or part by any means is prohibited
without the written permission of Survey of India, the
National Mapping Agency.

GOVERNMENT OF INDIA COPYRIGHT, 2011.



REG. No. SPG D11 (GD & D GDC-1:50,000)

Bill No 35/44
dt. 29.02.2014
re

भारत के सर्वेक्षक, सर्वेक्षण विभाग, दिल्ली, के निदेश से प्रकाशित।
Published under the direction of Swarna Subba Rao, B.E., Surveyor General of India,
Survey of India, Hattibarkala Estate, Post Box No.37, Dehra Dun-248001 (Uttarakhand)
Department of Science & Technology, Government of India.

PRINTED AT THE SOUTHERN PRINTING GROUP OF SURVEY OF INDIA.