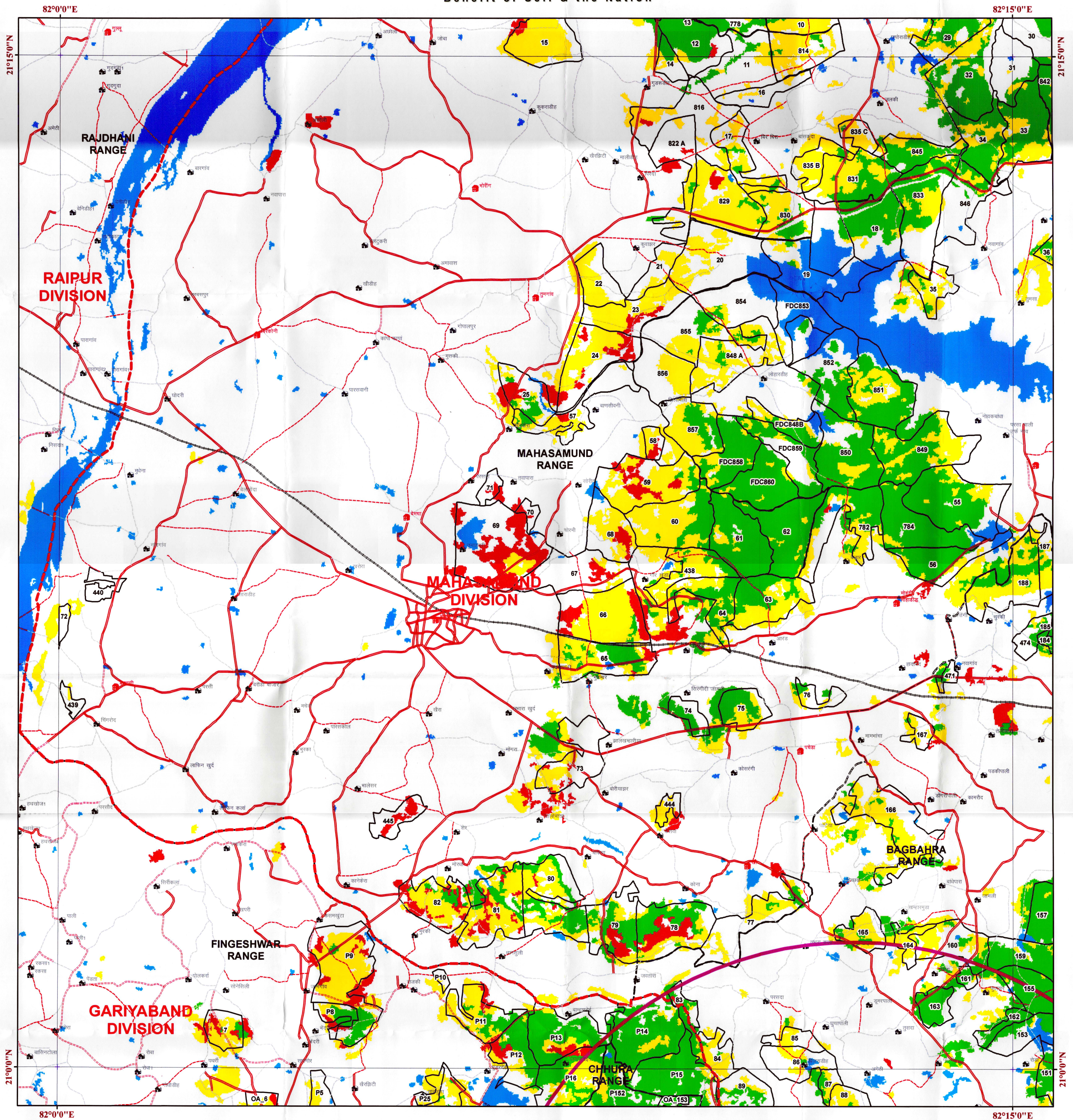


# छत्तीसगढ़ वन विभाग वन आवरण मानचित्र



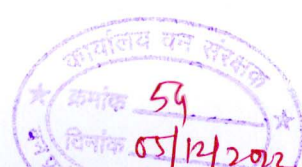
## Toposheet No.- 64 K 04

Save Trees, Save Forests and Save Wildlife for the  
Benefit of Self & the Nation



### LEGEND

- Town / City
- Village
- DGPS\_POINTS
- Cart Tracks
- Metalled Road
- Tracks
- UnMetalled Road
- Rail
- FOREST\_ROUTE\_USTR
- NON\_FOREST\_ROUTE
- FOREST\_ROUTE\_LINE
- NON\_FOREST\_ROUTE\_AREA
- FOREST\_ROUTE\_AREA
- 10\_KM\_Buffer
- Compartment Boundary
- Range Boundary
- NP/WLS Boundary
- Division Boundary
- CGGrid\_15m\_region
- Forest Cover**
- ISFR 2021**
- MDF
- NON FOREST
- OPEN FOREST
- SCRUB
- VDF
- WATER



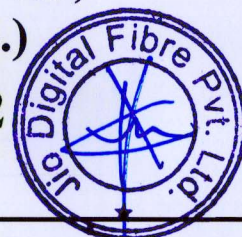
MAP PREPARED BY  
Programmer/Asstt. Programmer  
Nandhu Thakur, Chhatisgarh  
Signature: \_\_\_\_\_

1 cm = 1 km

0 1 2 4 6 8 KM

MAP PREPARED FOR:-  
Assistant Vice President (Corpo. Aff.)  
Jio Digital Fiber Pvt. Ltd.,  
Fourth Floor, Office No.- 401-405,  
Ambuja Mall, Raipur (C.G.)  
FP/CG/OFC/155724/2022

Divisional Forest Officer  
Gariyaband Division, Chhattisgarh



Division of forest land for non-forest purpose under Forest Conservation Act, 1980 Proposed for Jio Digital Fiber Private Ltd. Raipur Laying of Optical Fibre Cable (OFC) line in Gariyaband Forest Division under Gariyaband District of Chhattisgarh State, Area 2.921 ha.

Note :- Shapefile provided by user agencies.

