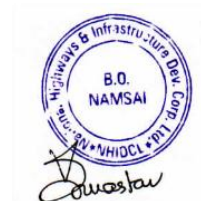


Distance of Project Road from Line of Actual Control (LAC)

CERTIFICATE

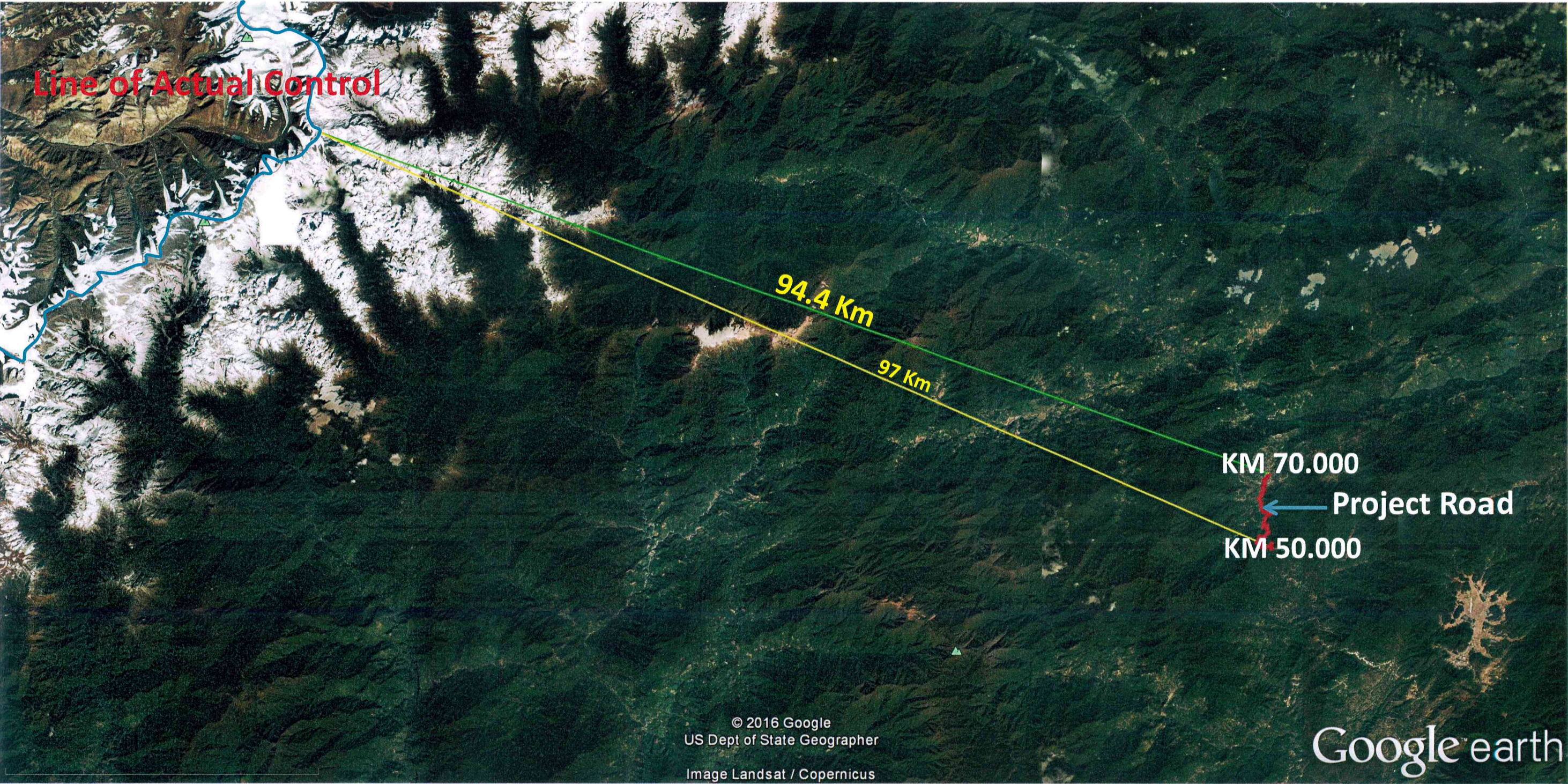
This is to certify that existing alignment from Km 50.00 on Joram-Koloriang Road (Design CH Km 44.00) to CH Km 70.00 Near New Palin (Design CH Km 44.00) of Joram-Koloriang Road is situated within 100 Km Areal Distance from Line of Actual Control. However actual aerial distance measured from Google Earth imagery for these locations on this road are as under:-

SL No	Location	Distance from LAC in (Approx Km)
1	Starting Chainage Km 50.00 on Joram-Koloriang Road (Design Chainage Km 44.000)	97.0 Km
2.	Ending Chainage Km 70.00 near New Palin on Joram-Koloriang Road (Design Chainage Km 59.363)	94.4Km



Shri Vivek Srivastava
GM (Projects), NHIDCL
Namsai, Arunachal Pradesh.

Distance of Project road from Line of Actual Control



Shri Vivek Srivastava
GM Projects, NHIDCL
Namsai, Arunachal Pradesh