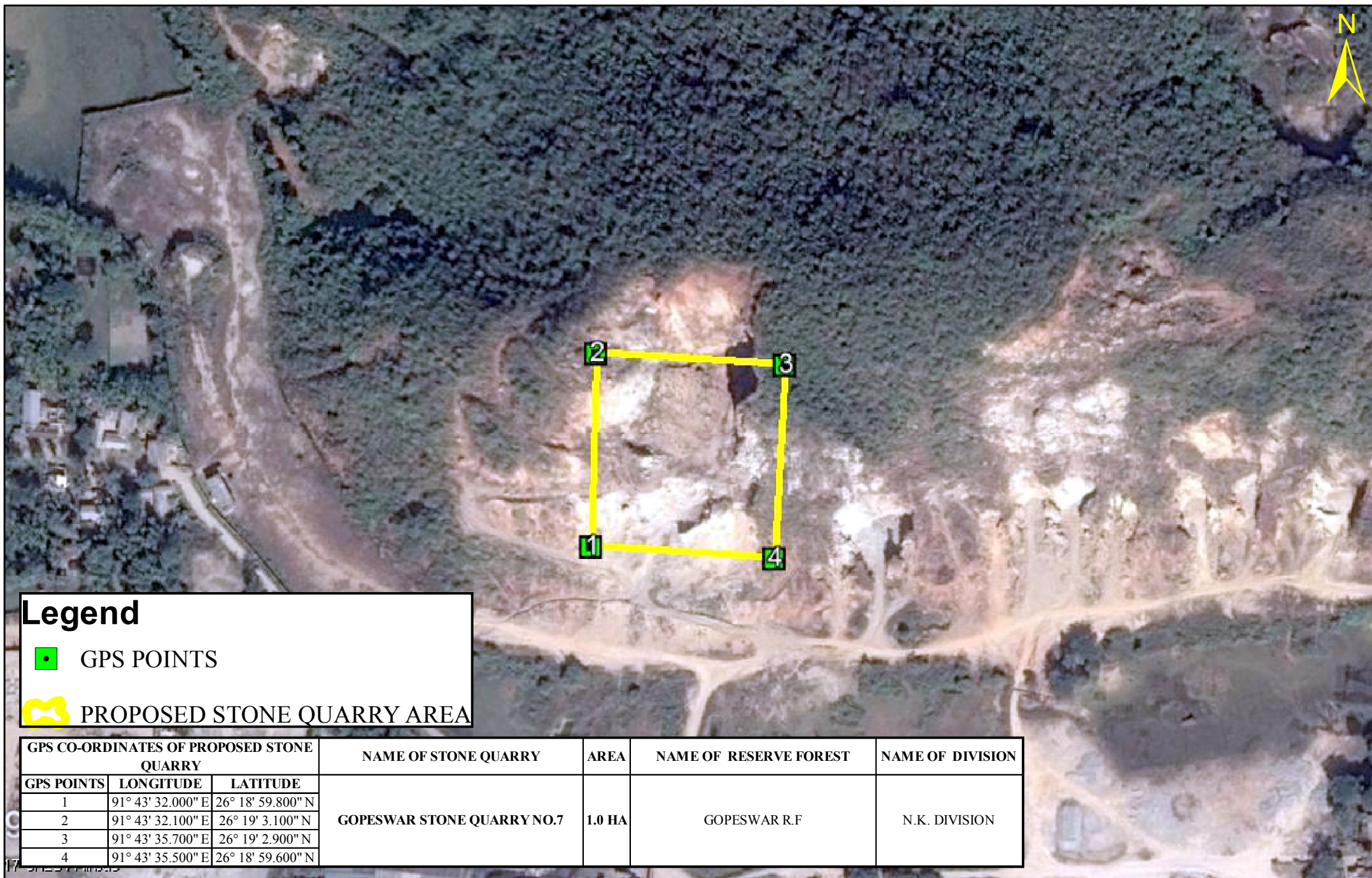


MAP SHOWING THE PROPOSED 1.0 HECTARE GOPESWAR STONE QUARRY NO.7 UNDER SILA RANGE, NORTH KAMRUP DIVISION



Legend

 GPS POINTS

 PROPOSED STONE QUARRY AREA

GPS CO-ORDINATES OF PROPOSED STONE QUARRY			NAME OF STONE QUARRY	AREA	NAME OF RESERVE FOREST	NAME OF DIVISION
GPS POINTS	LONGITUDE	LATITUDE				
1	91° 43' 32.000" E	26° 18' 59.800" N	GOPESWAR STONE QUARRY NO.7	1.0 HA	GOPESWAR R.F	N.K. DIVISION
2	91° 43' 32.100" E	26° 19' 3.100" N				
3	91° 43' 35.700" E	26° 19' 2.900" N				
4	91° 43' 35.500" E	26° 18' 59.600" N				