



नियत क लिय नहै NOT FOR EXPORT
OPEN SERIES
MAP

No. F45B10

Scale 1:50,000

F45B5 (73E/5)	F45B9 (73E/9)	F45B13 (73E/13)
F45B6 (73E/6)	F45B10 (73E/10) Jharkhand	F45B14 (73E/14) Bokaro Jharkhand
F45B7 (73E/7)	F45B11 (73E/11) Ranchi Jharkhand	F45B15 (73E/15) Purniya West Bengal

1 Girdih, Jharkhand.

भारतीय सर्वेक्षण विभाग

SURVEY OF INDIA

1st Edition 2010.

Price: Rs.70/-

CONVENTIONAL SYMBOLS

Express highway: with toll; with bridge; with distance stone	20
Roads, metalled: according to importance	
Roads, double carriageway: according to importance	
Unmetalled road: Cart-track, Pucca-track with pass, Foot-path	
Stream: with track in bed; unfilled; Canal	
Dam: masonry or rock-filled; earthwork; Weir	
River: dry with water channel; with island & rocks; Tidal river	
Submerged rocks, Shoal, Swamp, Reeds	
Wells: fitted; unfitted; Tube-well; Spring; Tanks: perennial; dry	
Embankments: road or rail; tank; Broken ground under constr.	
Railways, broad gauge: double; single with station; under constr.	
Railways, other gauges: double; single with distance stone; do.	
Mineral line or tramway, K.M. Cutting with tunnel	
Contours with sub-features: Rocky slopes, Cliffs	
Sand features: (fitted) (sand-rills) (permanent) (discontinuous) (fitted)	
Towns or Villages: inhabited; deserted; Fort	
Huts: permanent; temporary; Tower, Antiquities	
Temples, Chhapp, Church, Mosque, Idgah, Tomb, Graves	
Lighthouses, Lightships, Buoys: lighted; unlighted; Anchorage	
Mine: Vine on trellis, Grass, Scrub	
Palm: palm-tree; other; Plantain, Conifer, Bamboo, Other trees	
Areas: cultivated; wooded; Surveyed tree	
Boundary, international	
State: demarcated; undemarcated	
District: subdivided; taluk or taluk; forest	
Boundary pillars: surveyed; unlocated; village trijunction	
Height: triangulation; station; point; approximate	
Bench-mark: geodetic; tertiary; canal	
Post office, Telegraph office, Overhead tank	
Rail house or inspection bungalow, Circuit house, Police station	
Camping ground, Forest: reserved; protected	
Spaced names: administrative; locality or tribal	
Hospital, Dispensary, Veterinary; Hospital/Dispensary	
Aerodrome, Heliport, Tourist site	
Power line: with pylons surveyed; with poles unsurveyed	

REFERENCES

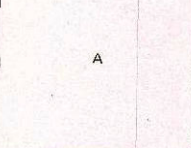
NH 33 National Highway No. 33. PWD Public Works Department.
SER South Eastern Railway. City, Chumey.

NOTES :-

Heights are in metres and above Indian mean sea level.
Contours are approximate.
A relative height, h_r , represents the approximate height, in metres, between the top and bottom of a steep slope.
The triangulated heights and contours in this sheet have not been adjusted to the heights of the spirit levelled bench - marks and may not be strictly in accordance with them.
The kilometre scale numbers along roads are shown in black type, e.g., 5, whereas milestone numbers are shown in single type, e.g., 5.
Forest boundaries north of the Damodar River have not been shown for want of reliable information.
The exterior boundaries of areas of Reserved or Protected Forests are shown by green lines.

COMPILED INDEX

A. Surveyed during 1975-76. Updated for major details from satellite imagery of 2007 dated 2006-06.



Projection - UTM Datum - WGS 84

Magnetic Variation from True North about $\frac{1}{4}$ West in 2005.
(Decreasing by about 1' annually).

1:50,000

500 m to 1 km 2 cm to 1 km
Metres 1000 500 0 1 2 3 Kilometres

CONTOUR INTERVAL 10 METRES

For further details about this map, please contact

Director

Jharkhand Geo-Spatial Data Centre

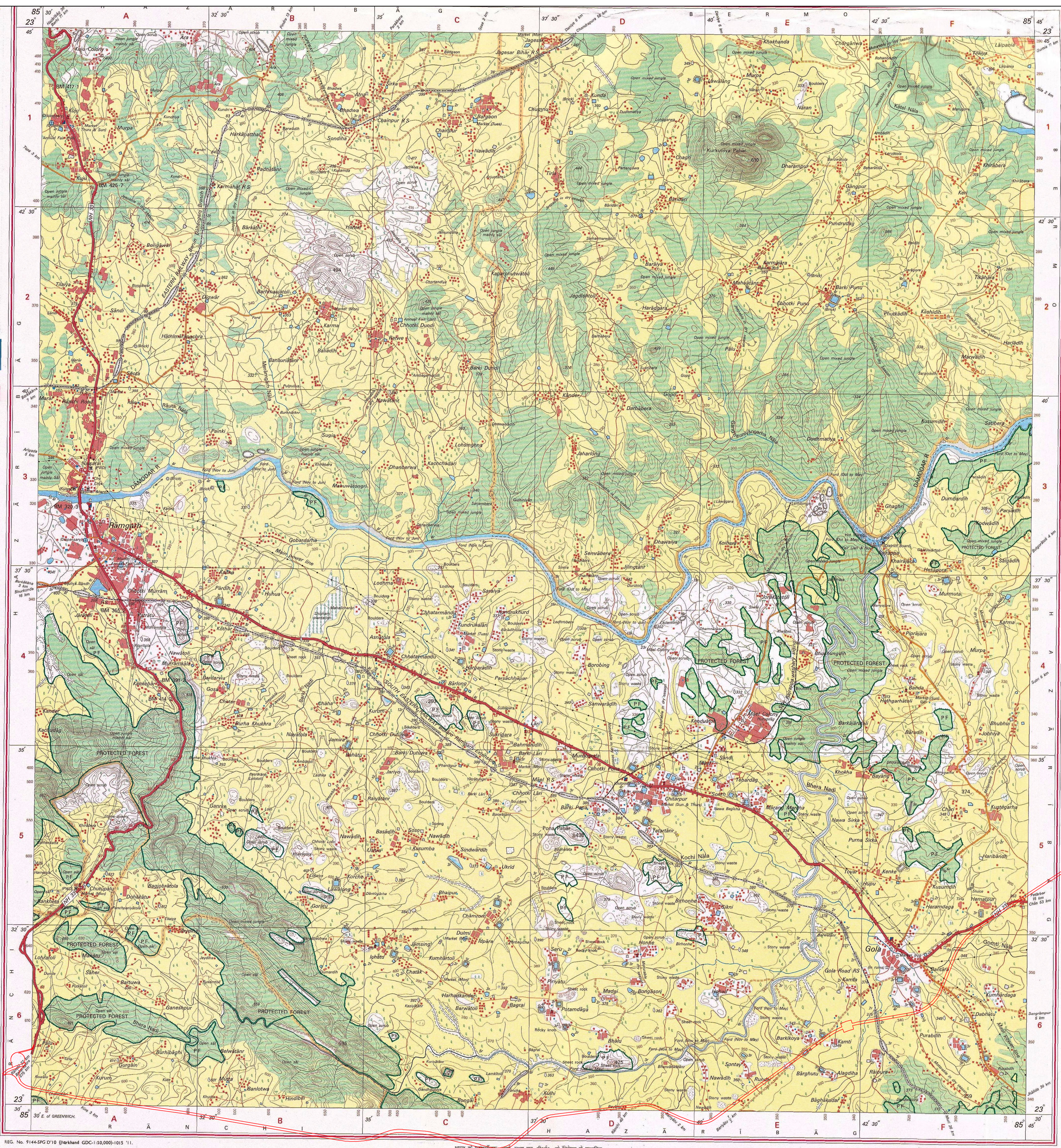
Survey of India, Dordanda

Ranchi - 834002.

Fax : 0651 - 2482789

WEBSITE - www.surveyofindia.gov.in

Reproduction in whole or part by any means is prohibited without the written permission of Survey of India, the National Mapping Organisation.



REG. No. 9144-SPG D'10 (Jharkhand GDC:1:50,000)-1015 '11.

भारत के नक्शाकार - सर्वेक्षण विभाग, नई दिल्ली, के नियंत्रण में प्रकाशित.

PRINTED AT THE SOUTHERN PRINTING GROUP OF SURVEY OF INDIA.

Name of Project : Diversion of fresh Forest Land for development of Economic Corridors, Inter Corridors, Feeder Routes
etc., under Bharatmala Pariyojana of Jaina More -Gola -Ormanji section in the state of Jharkhand.