

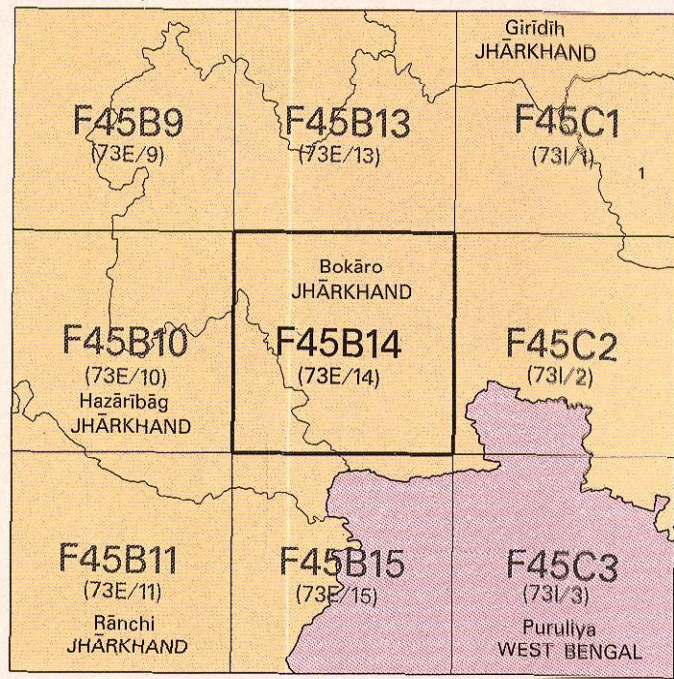


निर्यात के लिए नहीं NOT FOR EXPORT

OPEN SERIES
MAP

No. F45B14

Scale 1:50,000



1 Dhanbad, JHARKHAND.

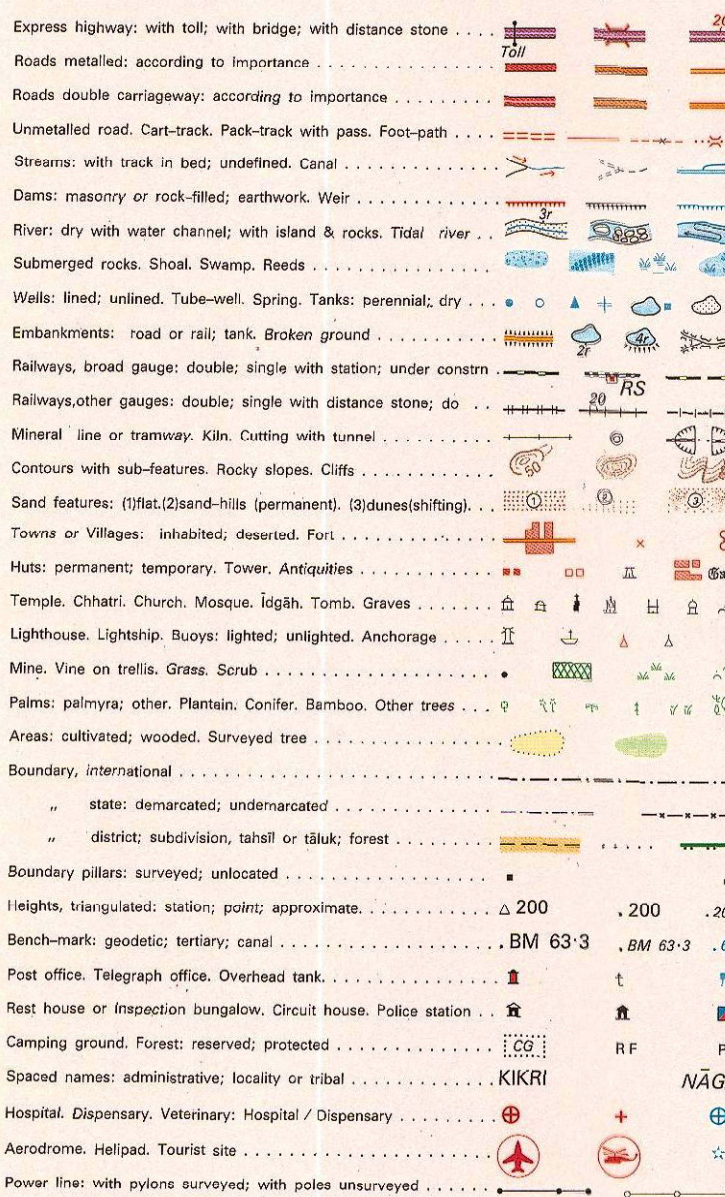
भारतीय सर्वेक्षण विभाग

SURVEY OF INDIA

1st Edition 2009.

Price : Rs. 50 /-

CONVENTIONAL SYMBOLS



REFERENCES

NH 23 National Highway No. 23. SER South Eastern Railway.
CMBK Chandi Murti Barika Kana.

NOTES :-

Heights are in metres and above Indian mean sea level.
Contours are approximate.
A relative height, - B, represents the approximate height, in metres, between the top and bottom of a steep slope.
Tanks, shown dry, in this area usually contain water from July to December.
The kilometre stone numbers along roads are shown in slant type, e.g., 5' whereas milestone numbers are shown in upright type, e.g., 5.
Cultivation is periodic and dependent on rainfall.
Unmetalled road along the canal embankment is shown by cart-track symbol.
All unmetalled roads are motorable in dry season.
A relative height, e.g., 6', marked along a canal, indicates the height of the top of the canal embankment above the adjacent country.

COMPILED INDEX

A. Surveyed during 1975-76. Updated for major details from 1:25,000 survey 1980-88 and from satellite imagery of 2007. During 2008-06.



Projection - UTM Datum - WGS 84

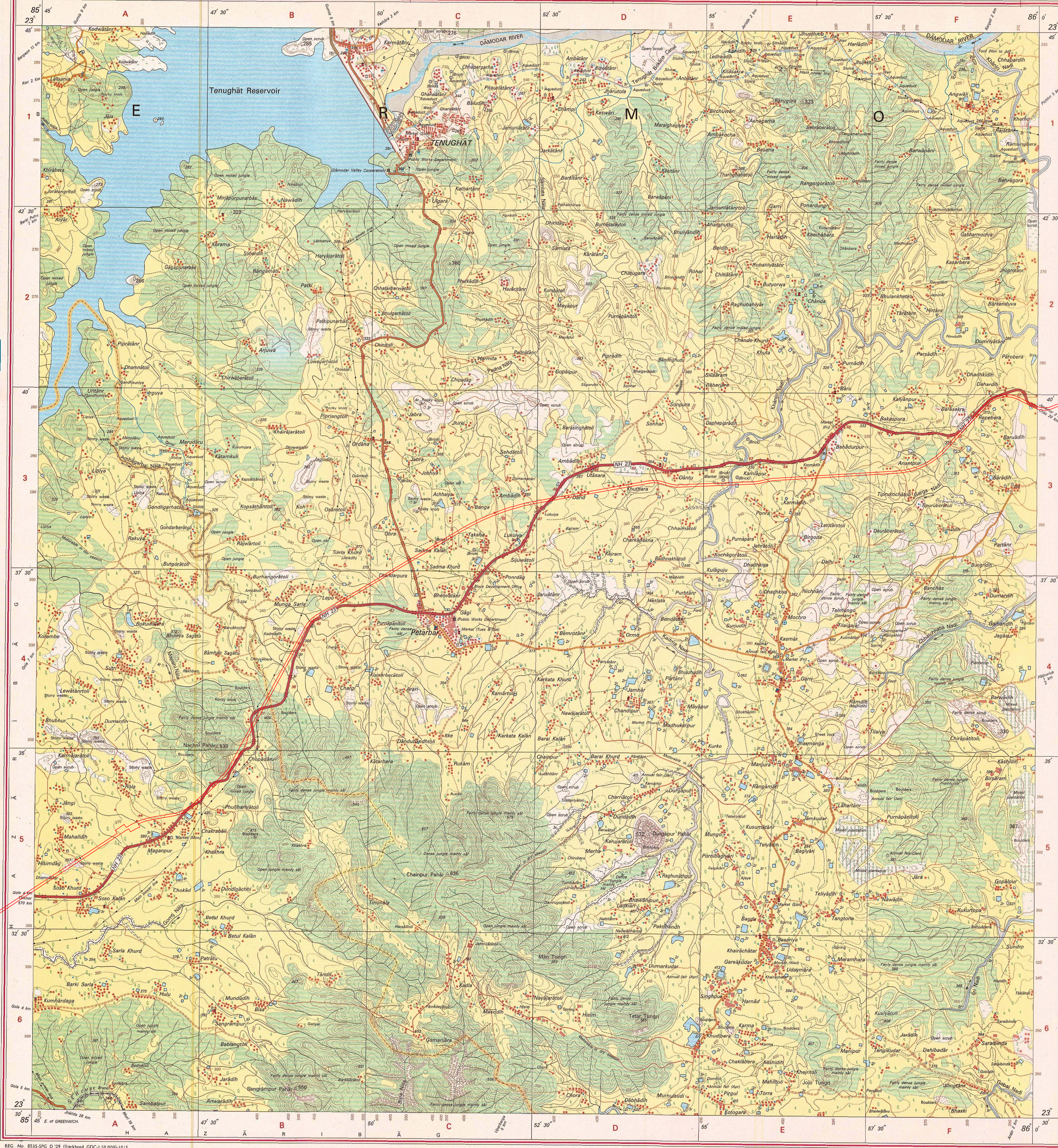
Magnetic Variation from True North about 2° West in 2005.
(Decreasing by about 1' annually)

For further details about this map, please contact

Director
Jharkhand Geo-Spatial Data Centre
Survey of India, Dhanbad
Ranchi - 834002
Fax : 0651 - 2482789

WEBSITE - www.surveyofindia.gov.in

Reproduction in whole or part by any means is prohibited without the written permission of Survey of India, the



Division: Bokaro

Name of Project : Diversion of fresh Forest Land for development of Economic Corridors, Inter Corridors, Feeder Routes etc., under Bharatmala Pariyojana of Jaina More -Gola -Ormanji section in the state of Jharkhand.