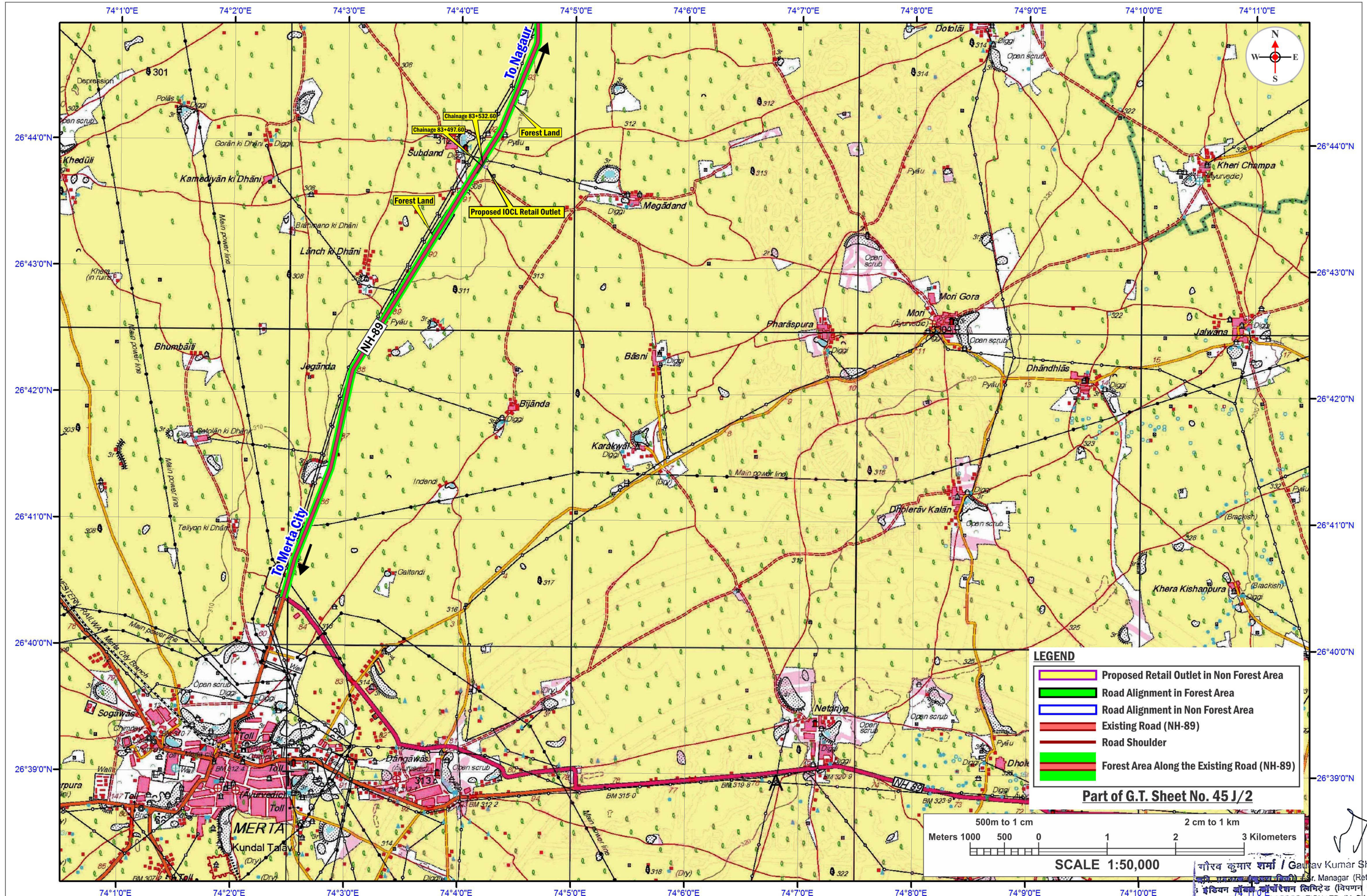


MAP SHOWING GEO-REFERENCED SURVEY OF INDIA TOPOSHEET WITH FOREST LAND BOUNDARY & PROPOSED ROAD ALIGNMENT

Construction of Approach Road for Proposed Indian Oil Corporation Ltd. Retail Outlet on Nagaur - Merta City Road (NH-89) Between KM Stone No. 83-84 (Chainage: 83+497.60 - 83+532.60) LHS in Khasra No. 209/108, At Village-Shubhdand, Tehsil-Merta, District-Nagaur, Rajasthan

Proposal No. : FP/RJ/ROAD/35700/2018 (Applied Area : 0.1887 ha)



गौरव कुमार शर्मा / Gaurav Kumar Sharma
Sr. Manager (Retail Sales)
INDIAN OIL CORPORATION LTD. (M.D.)
अजमेर / AJMER-305006



निर्यात के लिए नहीं NOT FOR EXPORT



No. G43I2

Scale 1:50,000

G43H13 (45F/13)	G43I1 (45J/1)	G43I5 (45J/5)
G43H14 (45F/14)	Nagaur RAJASTHAN G43I2 (45J/2)	G43I6 (45J/6)
G43H15 (45F/15)	G43I3 (45J/3) Pali RAJASTHAN	G43I7 (45J/7) Ajmer RAJASTHAN

1 Jodhpur, RAJASTHAN.

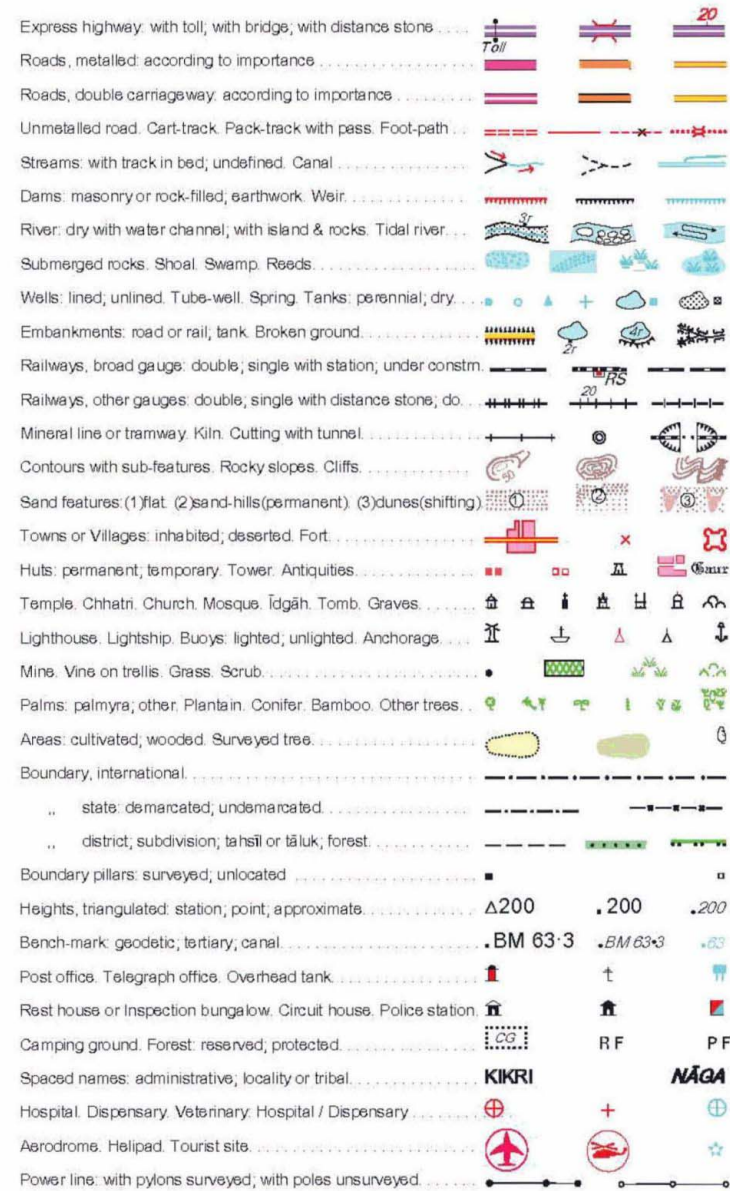
भारतीय सर्वेक्षण विभाग

SURVEY OF INDIA

1st Edition 2011.

Price : Rs. 77/-

CONVENTIONAL SYMBOLS



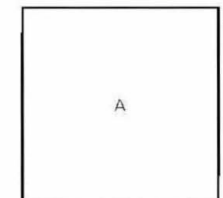
REFERENCE

NH 89 National Highway 89

NOTES :-

Height in metres and above Indian mean sea level.
Contours are approximate.
A relative height, h_r , represents the approximate height, in metres, between the top and bottom of a steep slope.
Tanks, shown dry, in this area, usually contain water from July to September.
A relative height h_r against a well, indicates its total depth in metres.
Most of the unlined well symbols indicate covered tanks, called 'Aurals', which usually contain surface collection of rainwater.
Unmetalled roads and cart tracks in the sheet are generally motorable (four-wheel drive).
Digg is a tank which is used for collection of water.
Pyau is a place where there is arrangement for serving drinking water.
Cultivation is periodic and dependent on rainfall.

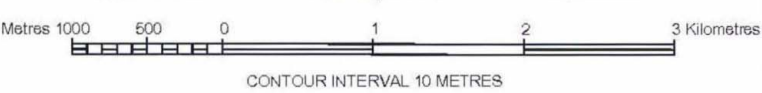
COMPILATION INDEX



Projection - UTM Datum - WGS 84

Magnetic Variation from True North about $\frac{1}{4}^\circ$ East in 2005.
(Increasing by about $1'$ annually).

1:50,000



CONTOUR INTERVAL 10 METRES

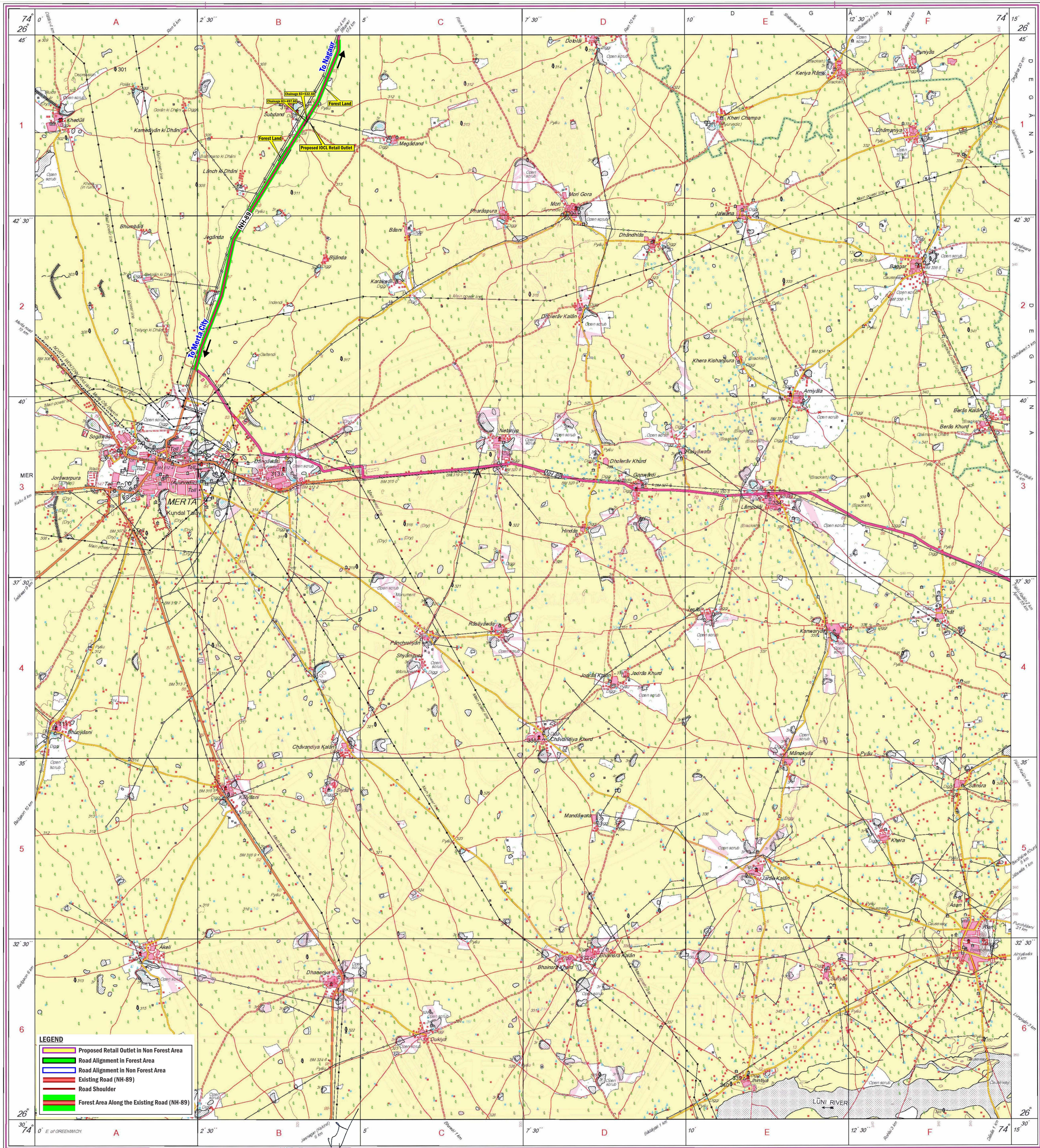
For further details about this map, please contact
Director
Rajasthan Geo-Spatial Data Centre
Survey of India
Sector 10, VidyaDhamagar
Jaipur.

WEBSITE - www.surveyofindia.gov.in

Reproduction in whole or part by any means is prohibited
without the written permission of Survey of India, the
National Mapping Agency.

GOVERNMENT OF INDIA COPYRIGHT, 2011.

MAP SHOWING GEO-TOPOGRAPHIC SURVEY OF INDIA TOPO SHEET WITH FOREST LAND BOUNDARY & PROPOSED ROAD ALIGNMENT
Construction of Approach Road for Proposed Indian Oil Corporation Ltd. Retail Outlet on Nagaur - Merta City Road (NH-89) Between KM Stone No. 83-84 (Chainage: 83+497.60 - 83+532.60) LHS in Khasra No. 209/108, At Village-Shubhdand, Tehsil-Merta, District-Nagaur, Rajasthan
Proposal No. : FP/RJ/ROAD/35700/2018 (Applied Area : 0.1887 ha)



REG. No. P.D.F. - WPDG 11 (Rajasthan QDC-150,000)

निर्यात के लिए नहीं / Gaurav Kumar Sharma
निर्यात के लिए नहीं / (Sr. Manager (Retail Sales))
भारतीय सर्वेक्षण विभाग / (विपणन प्रभाग)
INDIAN OIL CORPORATION LTD. (M. D.)
अवधर शर्मा कार्यालय / Ajmer Divisional Office
जयपुर / AJMER - 305005

भारत के नक्शेसंग्रह, स्वर्ण सुब्बा राव, बीएन, के निवेदन में प्रकाशित,
Published under the direction of Swarna Subba Rao, B.E., Surveyor General of India,
Survey of India, Hattibarkala Estate, Post Box No. 37, Dehra Dun-248001 (Uttarakhand)
Department of Science & Technology, Government of India.

PRINTED AT THE WESTERN PRINTING GROUP OF SURVEY OF INDIA