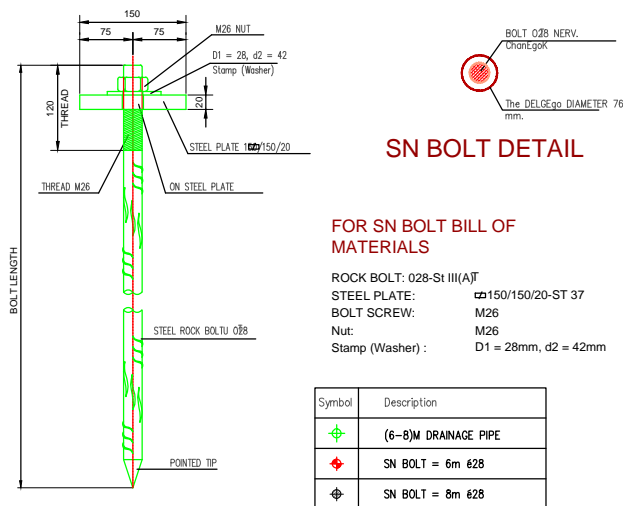


# PORTAL DRAWING



#### Notes:

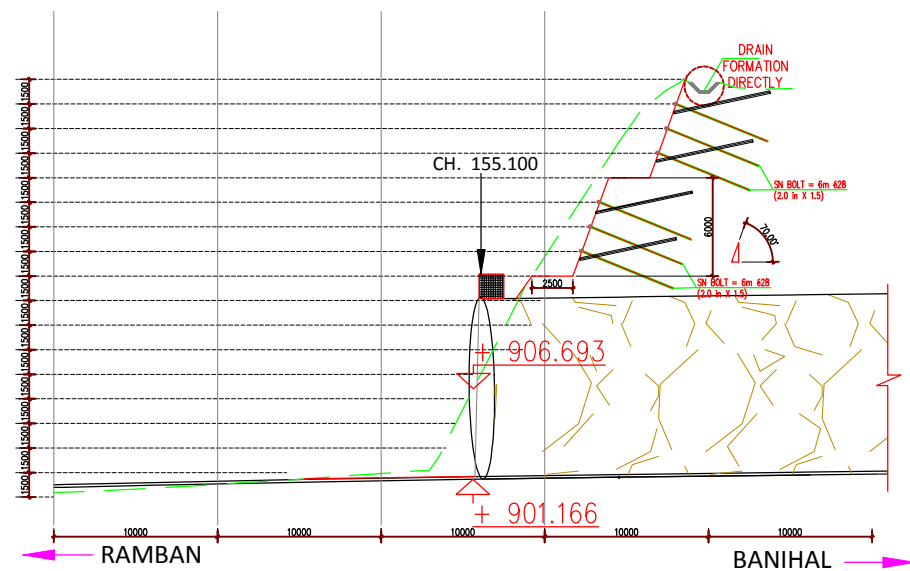
- 1-TORQUE CALIBRATED TO FORM 2-TON FORCE IN THE NUTS BOLTD WILL BE BORED WITH THE KEY.
- 2-OUT 5-6 cm. THE ENDS OF THE BOLT WILL BE CUT WITH OXYGEN.
- 3-MESH STEEL RADIAL DIRECTION 3 EYE, LONGITUDINAL DIRECTION 2 EYE OVERLAP.
- 4-IF AMBIENT CONDITIONS ARE MORE VARIABLE THAN EXPECTED, THE BOLT AND WIP APPLICATION LENGTH, RANGE, SHAPE AND TYPE (SUPPORT SYSTEMS) ENGINEER AND WILL BE REVISED ON SITE WITH THE APPROVAL OF THE ADMINISTRATION.
- 5-TUNNEL PORTAL EXCAVATION; EXCAVATION STAGE HEIGHT 2.5m. TO BE DONE, AN UPPER SHEV EXCAVATION WILL NOT BE ENTERED INTO A SUB-SHEV EXCAVATIONS BEFORE COMPLETION.
- 6-SUPPORT SYSTEM (Genus and Quantity) ENVIRONMENTAL CONDITIONS ENCOUNTERED DURING EXCAVATION BE REVISED BY THE ENGINEER AND THE ADMINISTRATION.

- 7-BOLT FORAGES WHEN FACED WITH WATER SENSITIVE FLOORS DURING MANUFACTURING WILL BE MADE WITH DRY PUNCH.
- 8-PG BOLT and IBO BOLT WHEN ALL BOLT need TO be DESIGNATED as SN BOLT REPLACEABLE
- 9-COORDINATES ARE IN THE UTM SYSTEM.

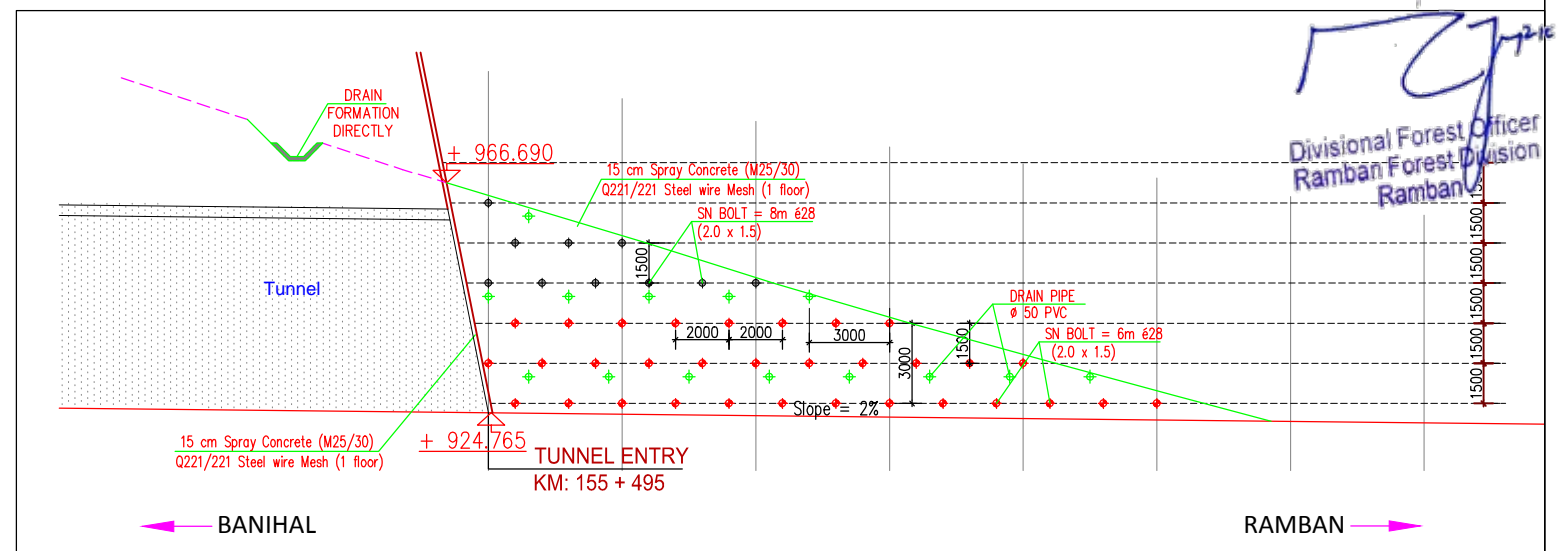
Material	
1-BOLT	:Ø28mm TOR
2- WIRE MESH	: Q221/221
3-SPRAY CONCRETE	: M20/25

परियोजना निदेशक  
 Project Director  
 राष्ट्रीय राजमार्ग निदेशक, पी. एन. इन्फ्रा राकन  
 National Highway Authority of India, P.U, Ramban

#### SN BOLT DETAILS 1/5

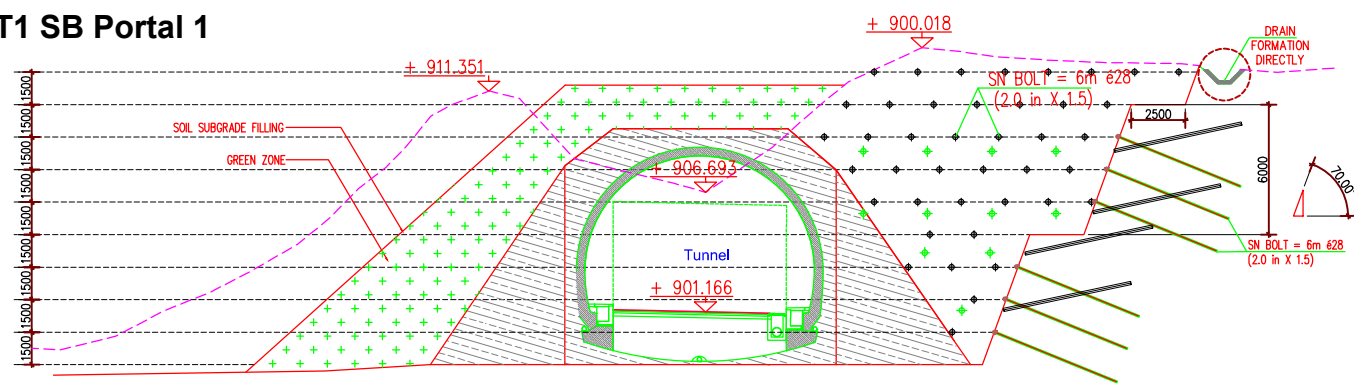


LONG SECTION VIEW AT TUNNEL PORTAL CH 155+100



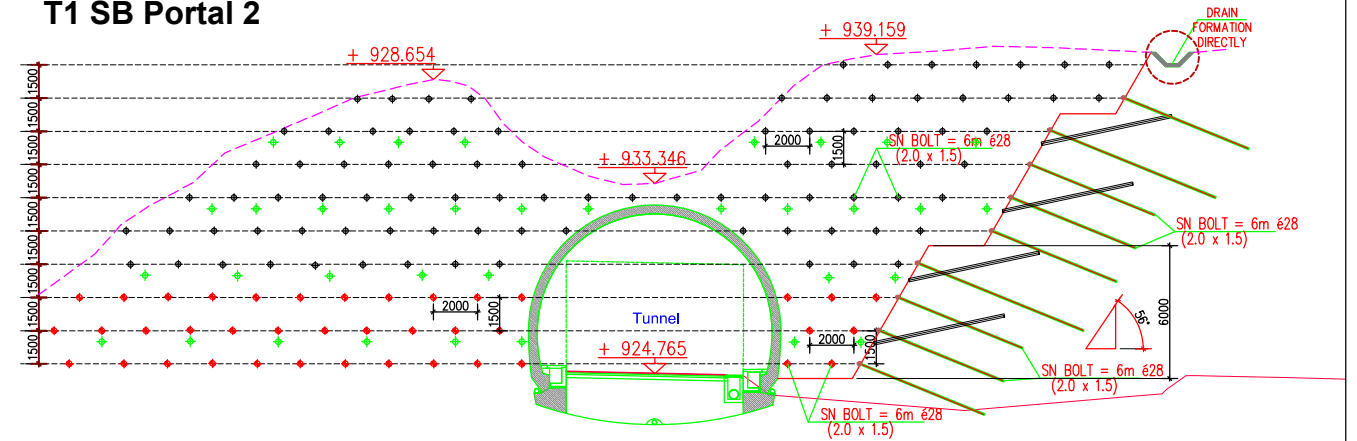
LONG SECTION VIEW AT TUNNEL PORTAL CH 155+495

#### T1 SB Portal 1



TUNNEL SECTION AT PORTAL CH 155+100

#### T1 SB Portal 2



TUNNEL SECTION AT PORTAL CH 155+495

Client :-



NATIONAL HIGHWAYS  
 AUTHORITY OF INDIA

Project Title :-

From Existing Ch.148+047 (NB) / Ch.150+056(SB) to Design.  
 Ch.154+210 (NB)/ Ch.155+940(SB), (Section - I)

Drawing Name :-

FINAL FEASIBILITY REPORT  
 TUNNEL (AT1)  
 CH:155 + 100.00-CH: 155 + 495  
 PORTAL EXCAVATION PLAN  
 AND SECTIONS



Intercontinental Consultants & Technocrats Pvt. Ltd.,  
 in Joint Venture with  
 ALTINOK Consulting Engineering Inc.  
 A-8, Green Park, New Delhi - 110016, India

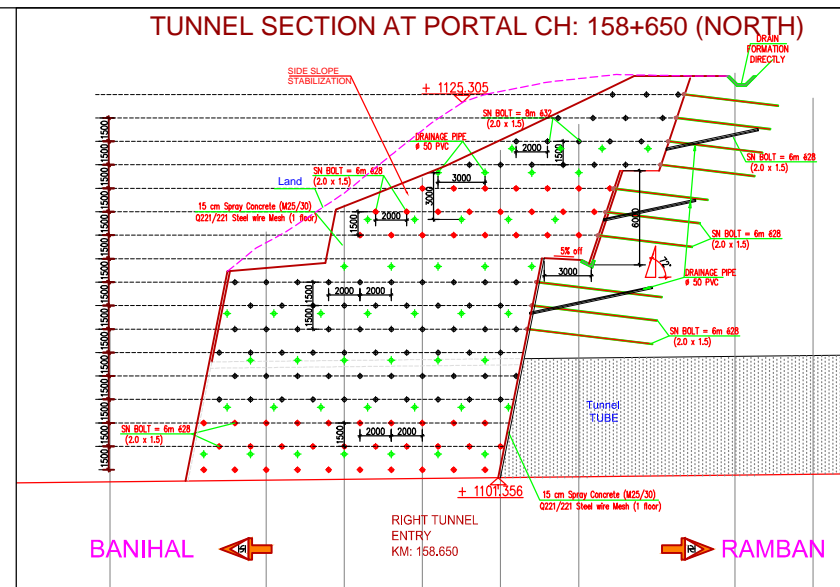
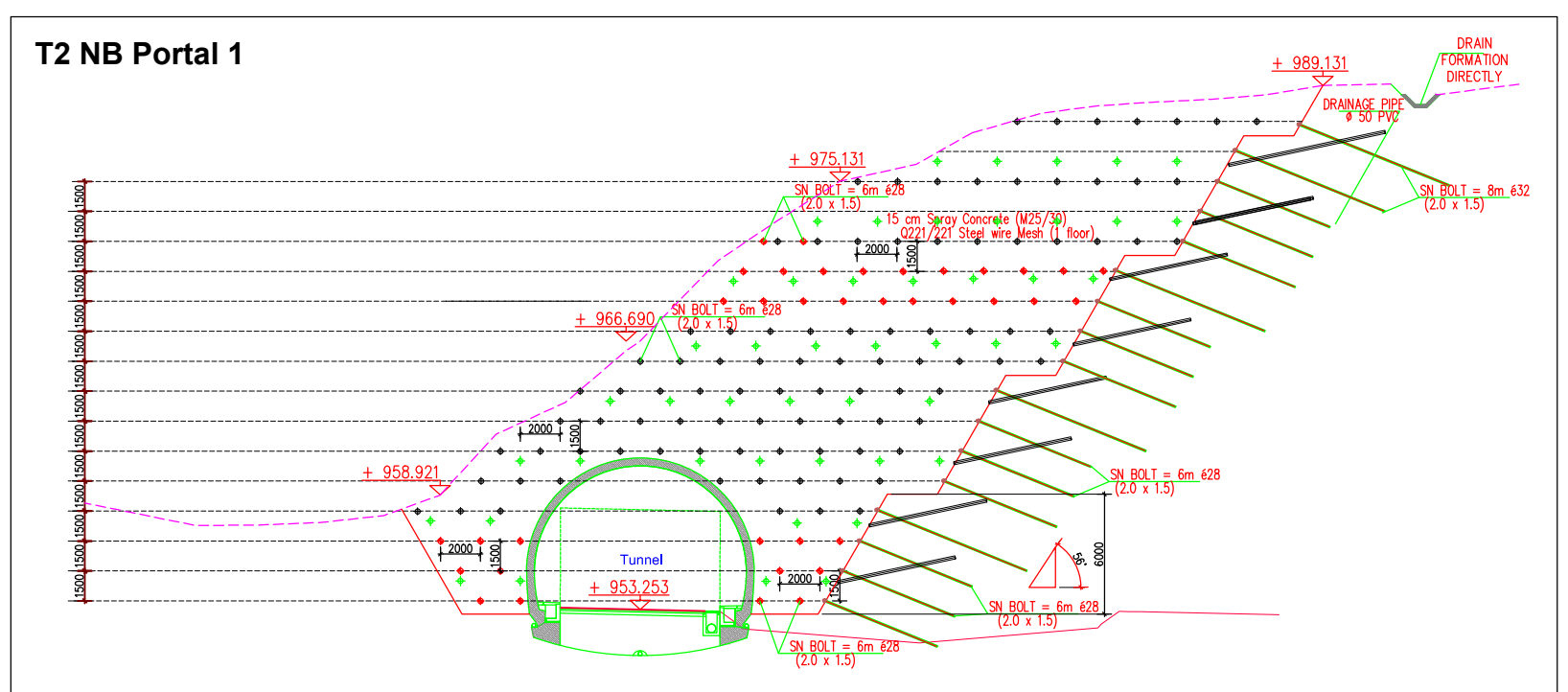
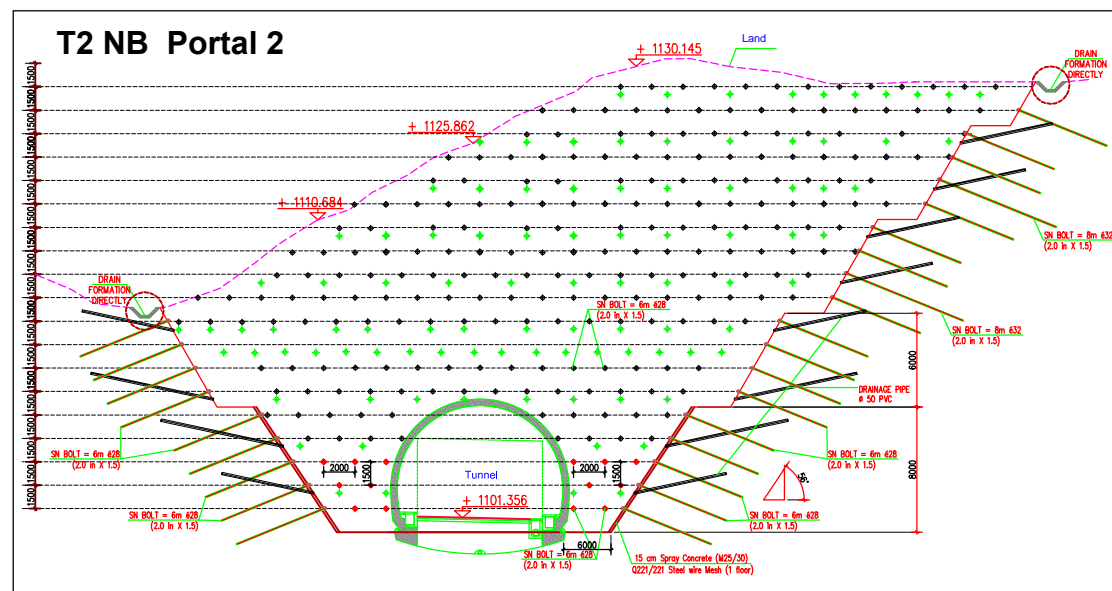
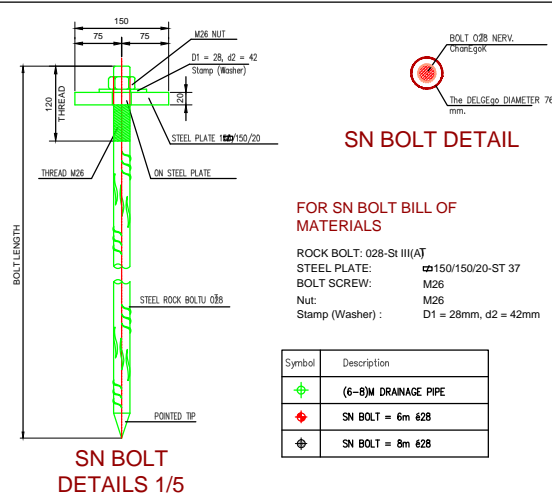
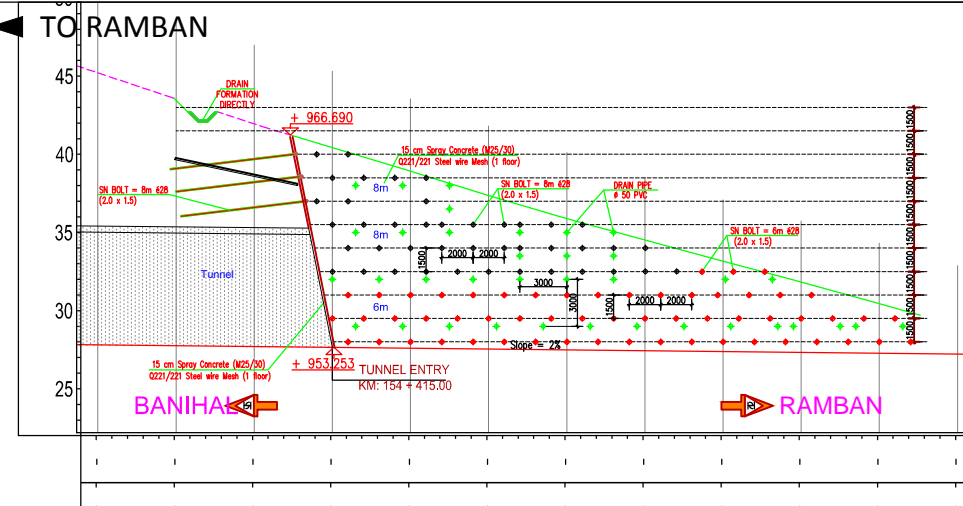
YGP  
 Prepared by

ANP  
 Designed by

SWB  
 Checked by

Sandip  
 Bhattacharjee  
 Approved by

R1	June - 2021	Initial Plan
R0	February - 2021	Initial Plan
Revisions	Date	Description
Revisions		
Drawing Title :- NHA / RAM - BAIN / PD / 01		Rev. 00
Scale - N.T.S.		



परियोजना निदेशक  
Project Director  
भारतीय राष्ट्रीय राजमार्ग प्राधिकरण, पी.यू.आर. इकाई रामनगर  
National Highway Authority of India, P.U., Ramnagar

Divisional Forest Officer  
Ramban Forest Division  
Ramban

Client :-



---

Project Title :-





Construction of Four Laning of part of Ramban to Banihal Section of NH-1A (Now NH-44), from Ch.154+210 to Ch.158+675 (North Bound) and from Ch.155+940 to Ch.160+282 (South Bound) including Construction of Twin Tube Tunnel (Package-I) in the UT of Jammu & Kashmir on EPC Mode

Drawing Name :-
-----------------

FINAL FEASIBILITY REPORT  
TUNNEL (AT2)  
CH:154 + 415.00-CH: 158 + 650.00 (NORTH)  
PORTAL EXCAVATION PLAN  
AND SECTIONS



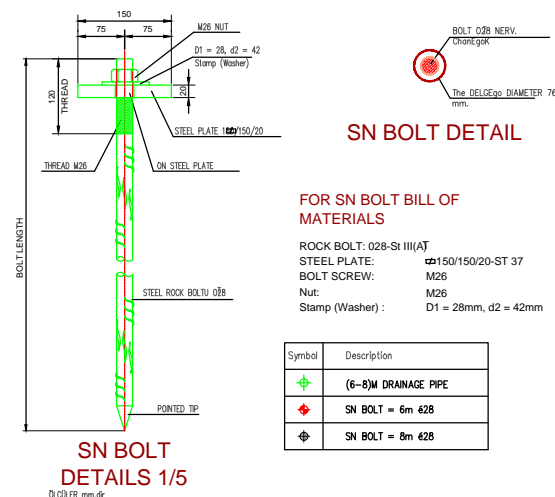
Intercontinental Consultants & Technocrats Pvt. Ltd.,  
in Joint Venture with  
ALTINOK Consulting Engineering Inc.  
A-8, Green Park, New Delhi - 110016, India

 YGP	 RC	 SWB	 Sandip Bhattacharjee
Prepared by	Designed by	Checked by	Approved by

R1	June - 2021	Initial Plan
R0	March - 2021	Initial Plan
Revisions	Date	Description
Revisions		
Drawing Title :- NHA/ / RAM-BANI / NB/PD/ 01		Rev. R0
Scale:- N.T.S		Sheet No :- 01 of 03

◀ TO RAMBAN

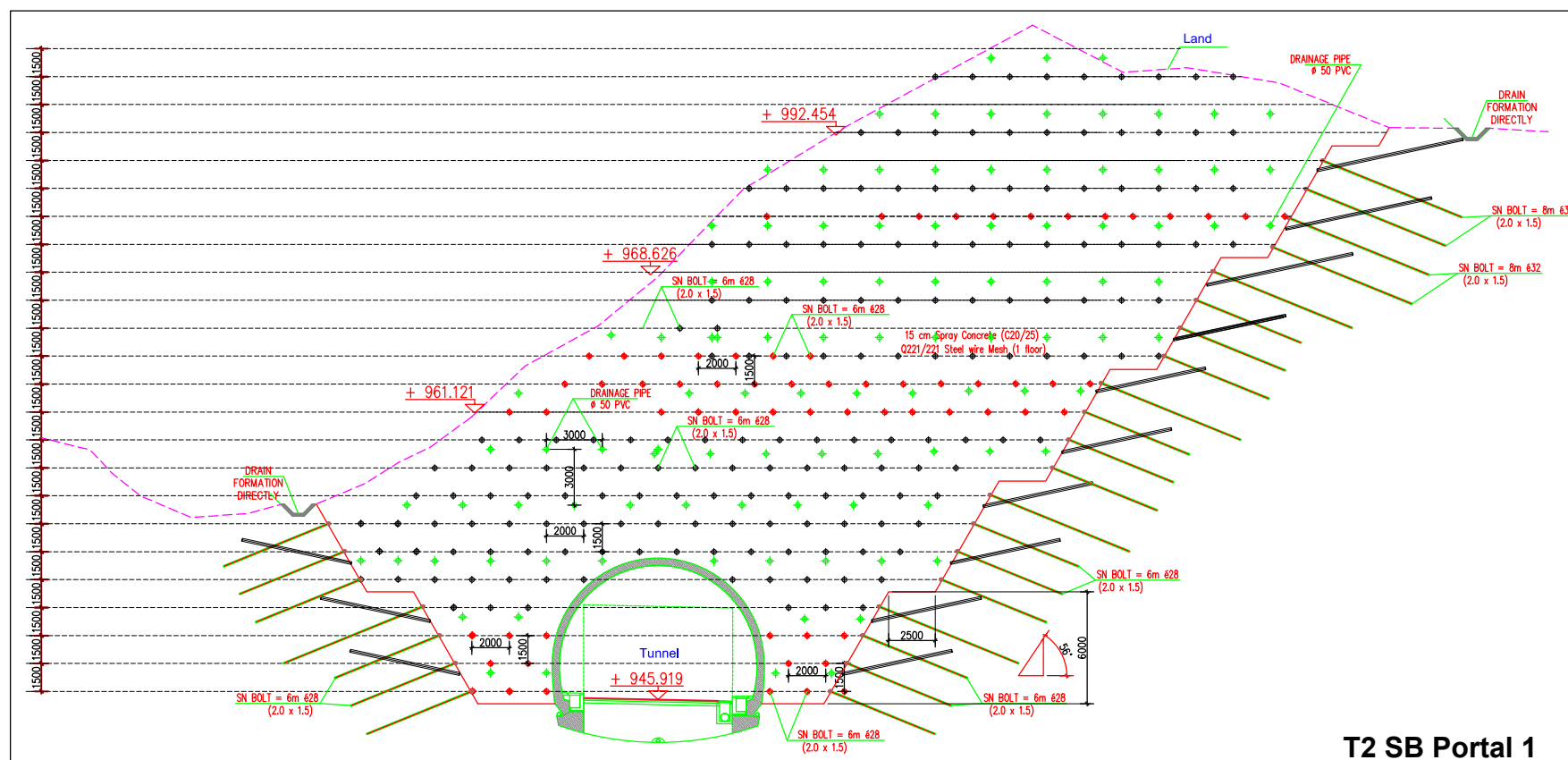
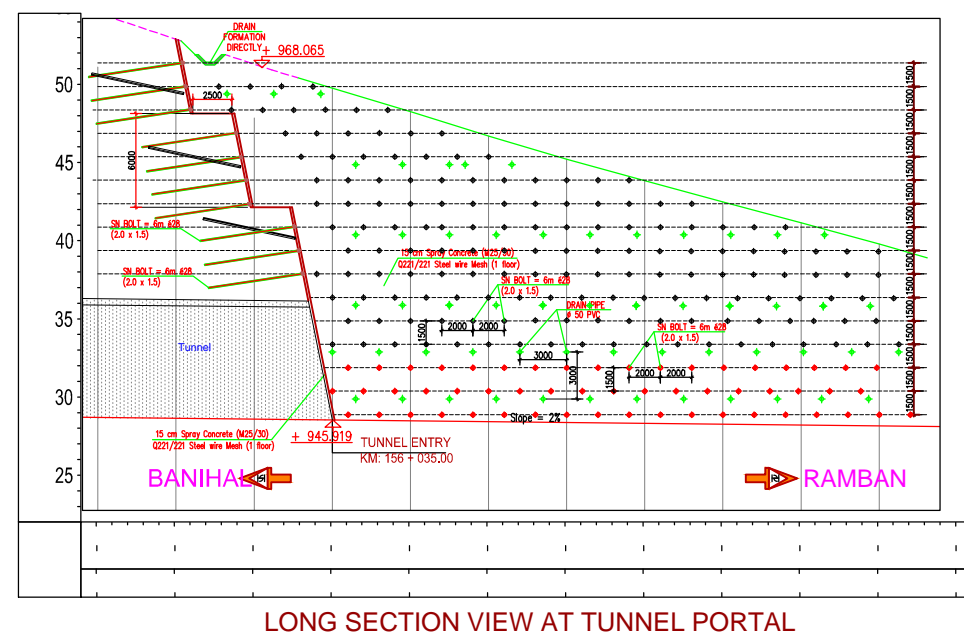
TO BANIHAL ►



<u>Material</u>	
1-BOLT	: $\phi 28\text{mm TOR}$
2- WIRE MESH	: Q221/221
3-SPRAY CONCRETE	: M20/25

Notes:

- 1-TORQUE CALIBRATED TO FORM 2-TON FORCE IN THE NUTS BOLDTA WILL BE BORED WITH THE KEY.
- 2-OUT 5-6 cm. THE ENDS OF THE BOLT WILL BE CUT WITH OXYGEN.
- 3-MESH STEEL RADIAL DIRECTION 3 EYE, LONGITUDINAL DIRECTION 2 EYE OVERLAP.
- 4-IF AMBIENT CONDITIONS ARE MORE VARIABLE THAN EXPECTED, THE BOLT AND WIP APPLICATION LENGTH, RANGE, SHAPE AND TYPE (SUPPORT SYSTEMS) ENGINEER AND WILL BE REVISED ON SITE WITH THE APPROVAL OF THE ADMINISTRATION.
- 5-TUNNEL PORTAL EXCAVATION: EXCAVATION STAGE HEIGHT 2.5m. To be DONE.
- 6-UPPER SHEET EXCAVATION WILL NOT BE ENTERED INTO A SUB-RE EXCAVATIONS BEFORE COMPLETION.
- 6-SUPPORT SYSTEM (Genus and Quantity) ENVIRONMENTAL CONDITIONS ENCOUNTERED DURING EXCAVATION BE REVISED BY THE ENGINEER AND THE ADMINISTRATION.
- 7-BOLT FORGES WHEN FACED WITH WATER SENSITIVE FLOORS DURING MANUFACTURING WILL BE MADE WITH DRY PUNCH.
- 8-PC BOLT AND IBO BOLT WHEN ALL BOLT NEED TO BE DESIGNATED AS SN BOLT REPLACEABLE
- 9-COORDINATES ARE IN THE UTM SYSTEM.



TUNNEL SECTION AT PORTAL CH: 156+035 (SOUTH)

  
परियोजना निर्देशक  
Project Director  
भारतीय राष्ट्रीय राजमार्ग प्राधिकरण, पी. एन. इकाई बंगल  
National Highway Authority of India, P.U., Ramban

Divisional Forest Officer  
Ramban Forest Division  
Ramban

Client :-



NATIONAL HIGHWAYS  
AUTHORITY OF INDIA

---

Project Title :-

Construction of Four Laning of part of Ramban to Banihal Section of NH-1A (Now NH-44), from Ch.154+210 to Ch.158+675 (North Bound) and from Ch.155+940 to Ch.160+282 (South Bound) including Construction of Twin Tube Tunnel (Package-I) in the UT of Jammu & Kashmir on EPC Mode

Drawing Name :-
-----------------

FINAL FEASIBILITY REPORT  
TUNNEL (AT2)  
CH:156 + 035.00 (SOUTH)  
PORTAL EXCAVATION PLAN  
AND SECTIONS



Intercontinental Consultants & Technocrats Pvt. Ltd.,  
in Joint Venture with  
ALTINOK Consulting Engineering Inc.  
A-8, Green Park, New Delhi - 110016, India



IGP
Prepared by



Designed by



SWB
Checked by

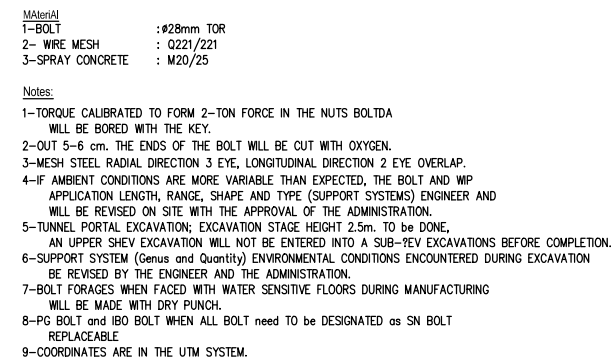


Approved by

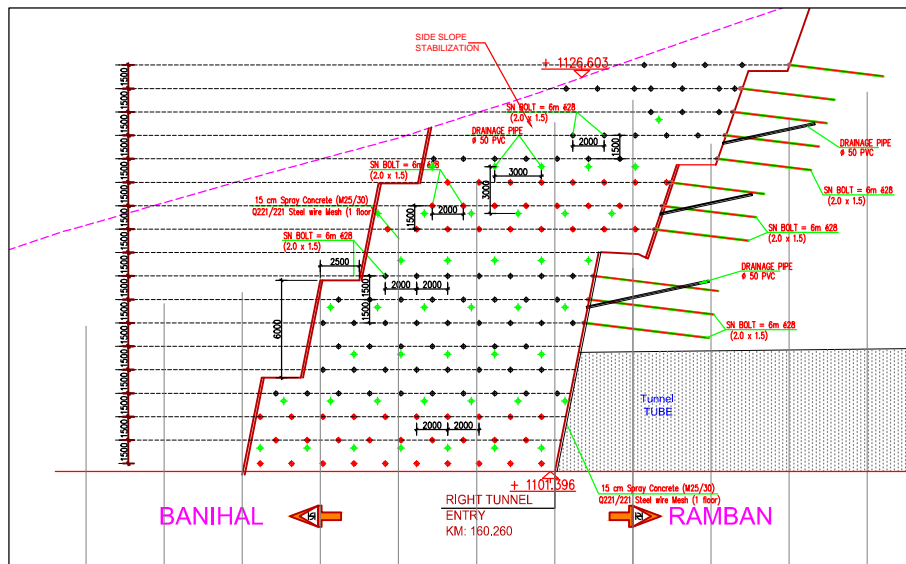
R1	June - 2021	Initial Plan
R0	March - 2021	Initial Plan
Revisions	Date	Description
Revisions		
Drawing Title :- NHAI / RAM-BANI / SB/PD/ 03		Rev. R0
Scale:- N.T.S		Sheet No :- 03 of 03



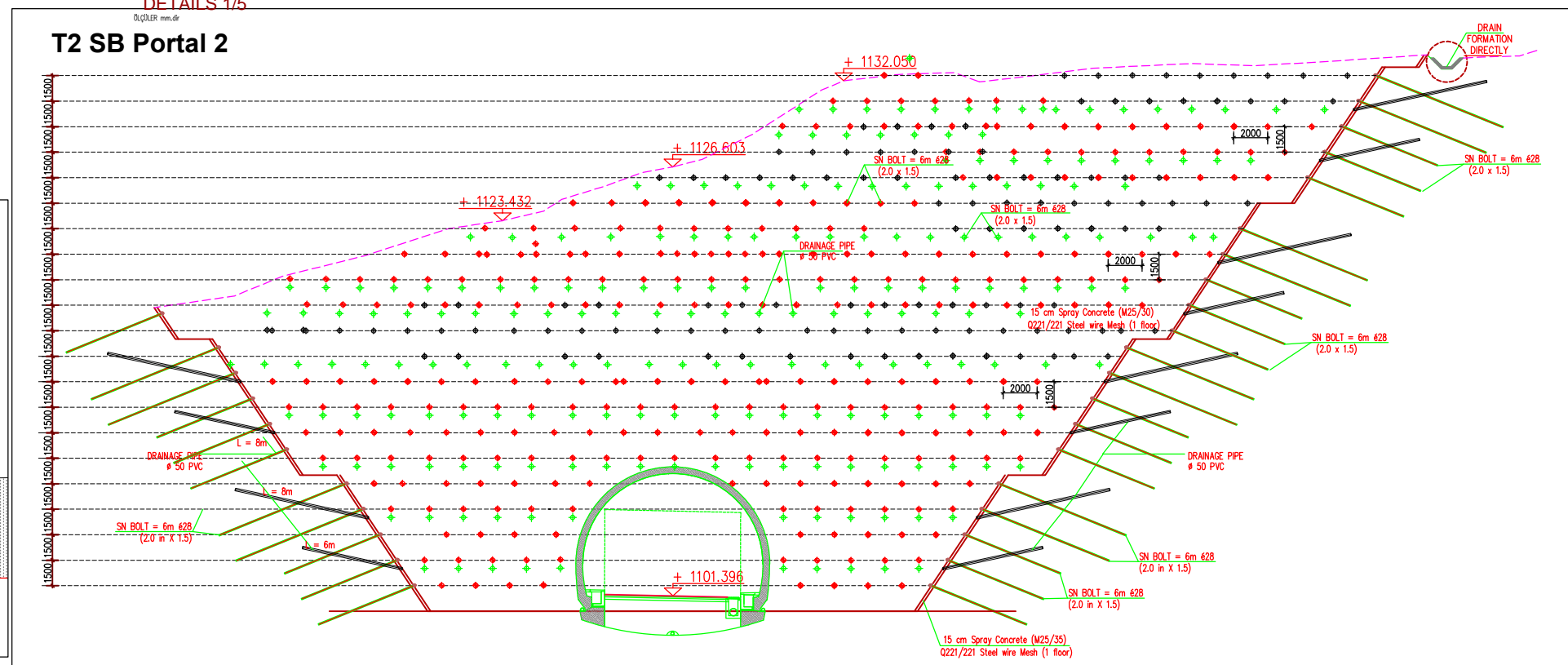
TO BANIHAL ►



## SN BOLT DETAILS 1/5



LONG SECTION VIEW AT TUNNEL PORTAL



TUNNEL SECTION AT PORTAL CH: 160+260 (SOUTH)

  
परियोजना निदेशक  
Project Director  
भारत का राष्ट्रीय राजमार्ग प्रकल्प, पी.यू.आर. इकाई रामन  
National Highway Authority of India, P.U. Ramnagar

Divisional Forest Officer  
Ramban Forest Division  
Ramban

Client :-



NATIONAL HIGHWAYS  
AUTHORITY OF INDIA

---

Project Title :-





Construction of Four Laning of part of Ramban to Banihal Section of NH-1A (Now NH-44), from Ch.154+210 to Ch.158+675 (North Bound) and from Ch.155+940 to Ch.160+282 (South Bound) including Construction of Twin Tube Tunnel (Package-I) in the UT of Jammu & Kashmir on EPC Mode

Drawing Name :-
-----------------

FINAL FEASIBILITY REPORT  
TUNNEL (AT2)  
CH: 160 + 260.00 (SOUTH)  
PORTAL EXCAVATION PLAN  
AND SECTIONS



Intercontinental Consultants & Technocrats Pvt. Ltd.,  
in Joint Venture with  
ALTINOK Consulting Engineering Inc.  
A-8, Green Park, New Delhi - 110016, India

			
YGP	RC	SWB	Sandip Bhattacharjee
Prepared by	Designed by	Checked by	Approved by

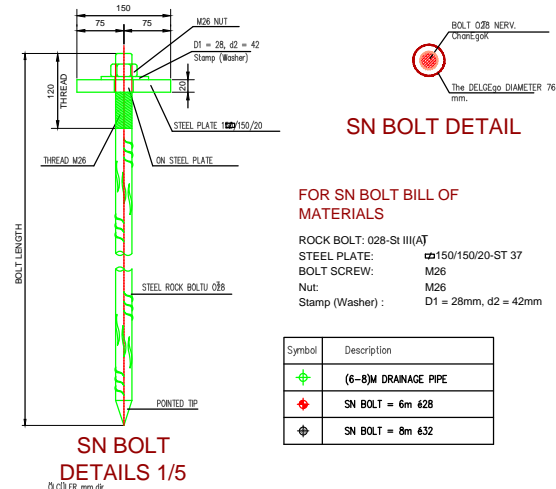
R1	June - 2021	Initial Plan
R0	March - 2021	Initial Plan
Revisions	Date	Description
Revisions		
Drawing Title :- NHAI / RAM-BANI / SB/PD/ 02		Rev. R0
Scale:- N.T.S		Sheet No :- 02 of 03

◀ TO RAMBAN

TO BANIHAL ▶

परियोजना निदेशक  
Project Director  
भारतीय राष्ट्रीय राजमार्ग प्राधिकरण, पी.यू. रामबान  
National Highway Authority of India, P.U., Ramban

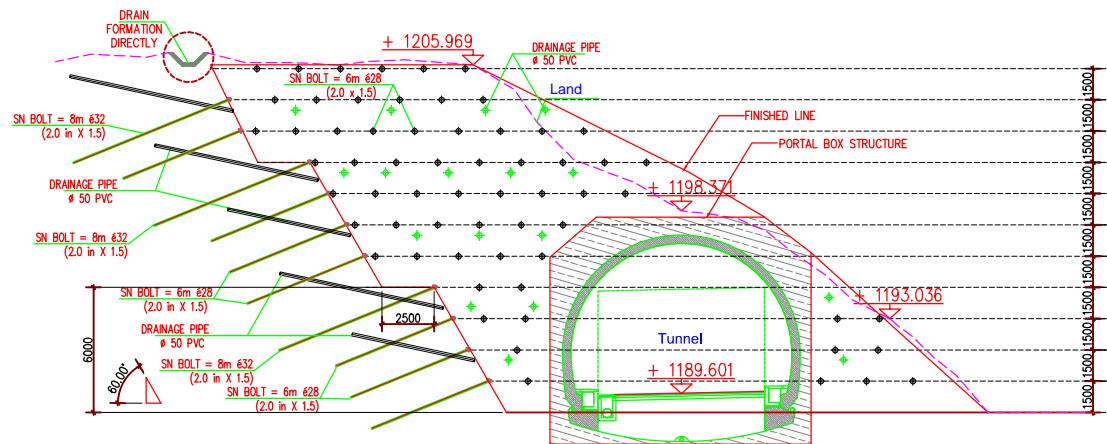
Divisional Forest Officer  
Ramban Forest Division  
Ramban



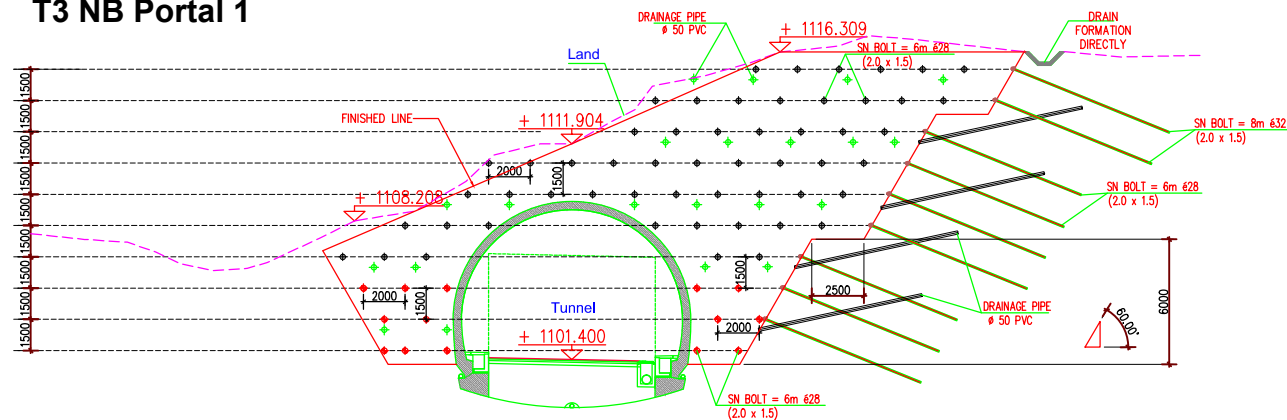
Material:  
1-BOLT : 28mm TOR  
2-WIRE MESH : Q221/221  
3-SPRAY CONCRETE : M20/25

- Notes:
- 1-TORQUE CALIBRATED TO FORM 2-TON FORCE IN THE NUTS BOLTDA WILL BE BORED WITH THE KEY.
  - 2-OUT 5-6 cm. THE ENDS OF THE BOLT WILL BE CUT WITH OXYGEN.
  - 3-MESH STEEL RADIAL DIRECTION 3 EYE, LONGITUDINAL DIRECTION 2 EYE OVERLAP.
  - 4-IF AMBIENT CONDITIONS ARE MORE VARIABLE THAN EXPECTED, THE BOLT AND WIP APPLICATION LENGTH, RANGE, SHAPE AND TYPE (SUPPORT SYSTEMS) ENGINEER AND WILL BE REVISED ON SITE WITH THE APPROVAL OF THE ADMINISTRATION.
  - 5-TUNNEL PORTAL EXCAVATION; EXCAVATION STAGE HEIGHT 2.5m. TO BE DONE. AN UPPER SHEV EXCAVATION WILL NOT BE ENTERED INTO A SUB-REV EXCAVATIONS BEFORE COMPLETION.
  - 6-SUPPORT SYSTEM (Genus and Quantity) ENVIRONMENTAL CONDITIONS ENCOUNTERED DURING EXCAVATION BE REVISED BY THE ENGINEER AND THE ADMINISTRATION.
  - 7-BOLT FORAGES WHEN FACED WITH WATER SENSITIVE FLOORS DURING MANUFACTURING WILL BE MADE WITH DRY PUNCH.
  - 8-PG BOLT and IBO BOLT WHEN ALL BOLT need to be DESIGNATED as SN BOLT REPLACEABLE
  - 9-COORDINATES ARE IN THE UTM SYSTEM.

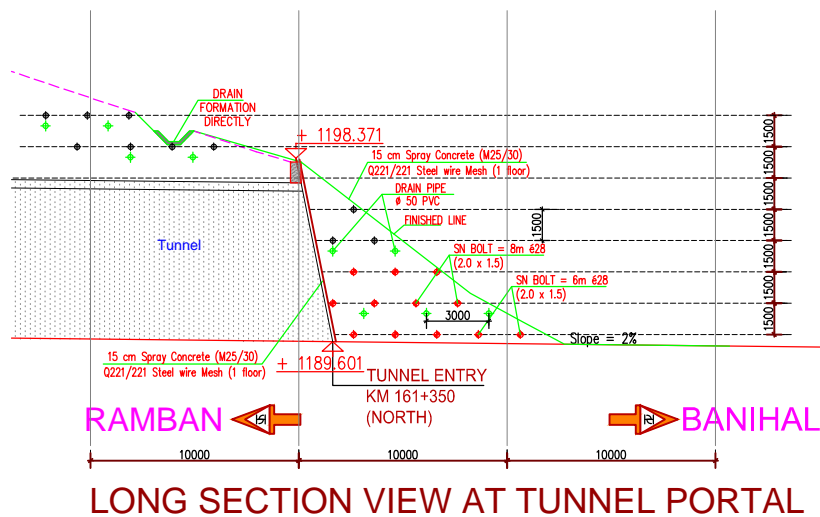
T3 NB Portal 2



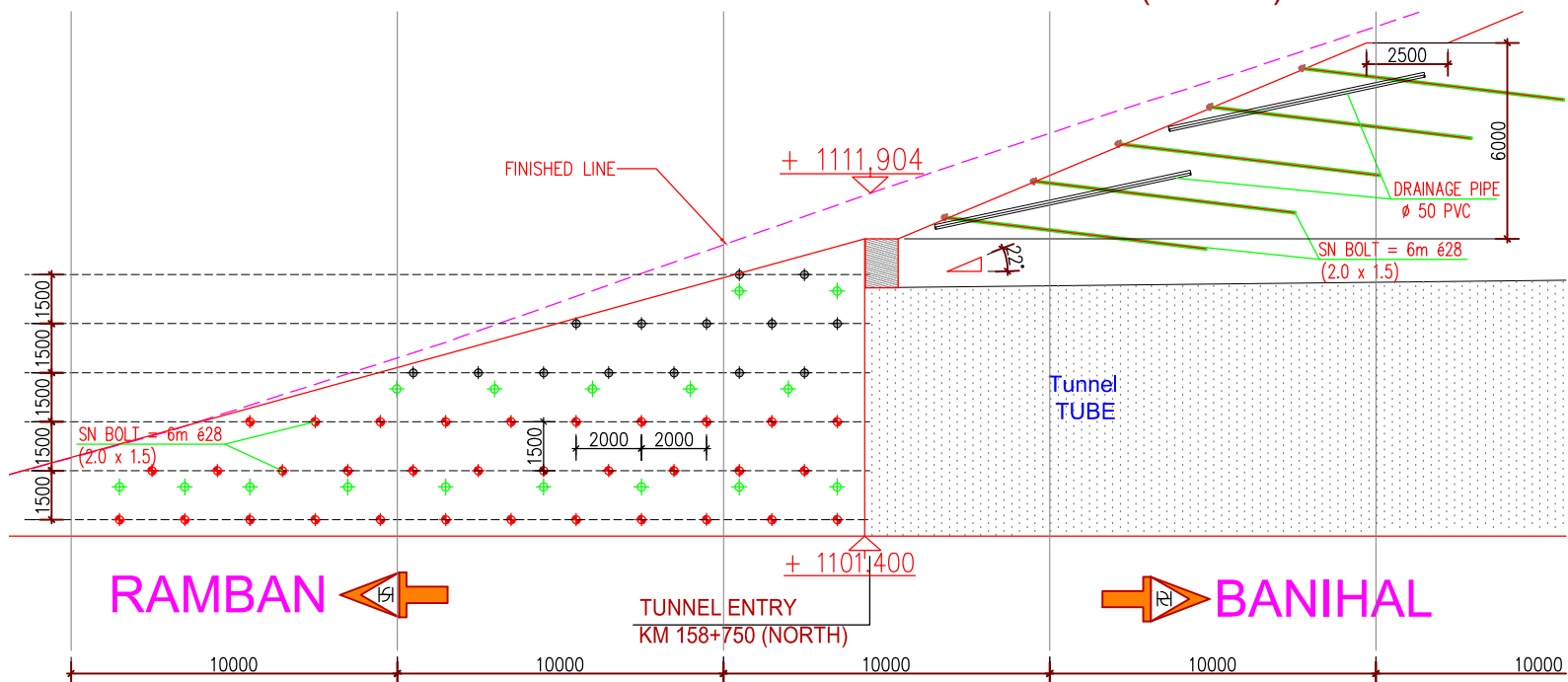
T3 NB Portal 1



TUNNEL SECTION AT PORTAL CH : 161+350 (NORTH)



TUNNEL SECTION AT PORTAL CH : 158+750 (NORTH)



LONG SECTION VIEW AT TUNNEL PORTAL

Client :-



NATIONAL HIGHWAYS  
AUTHORITY OF INDIA

Project Title :-

Construction of Four Laning of part of Ramban to Banihal Section of NH-1A (Now NH-44), from Ch.158+675 to Ch.164+660 (North Bound) and Ch.160+282 to Ch.163+368 (South Bound) connecting with Existing Tunnel-T4) excluding Ch.161+544 to Ch.164+100 (North Bound) including Construction of Twin Tube Tunnel (Package-II) in the UT of Jammu & Kashmir on EPC Mode

Drawing Name :-

FINAL FEASIBILITY REPORT  
TUNNEL (AT3)  
CH:158 + 750.00-CH: 161 + 350.00 (NORTH)  
PORTAL EXCAVATION PLAN  
AND SECTIONS



Intercontinental Consultants & Technocrats Pvt. Ltd.,  
in Joint Venture with  
ALTINOK Consulting Engineering Inc.  
A-8, Green Park, New Delhi - 110016, India

Prepared by  
YGP

Designed by  
ANP

Checked by  
SWB

Approved by  
Sandip Bhattacharjee

R1

June - 2021

Initial Plan

R0

March - 2021

Initial Plan

Revisions

Date

Description

Revisions

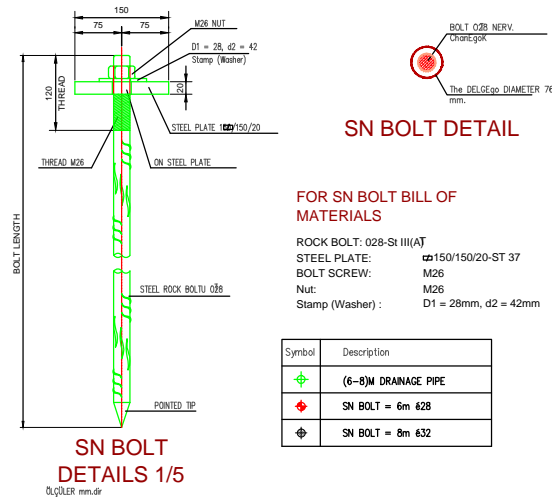
Drawing Title :- NHAI / RAM-BANI / NB/PD/ 01

Rev.  
R0

Scale:- N.T.S

◀ TO RAMBAN

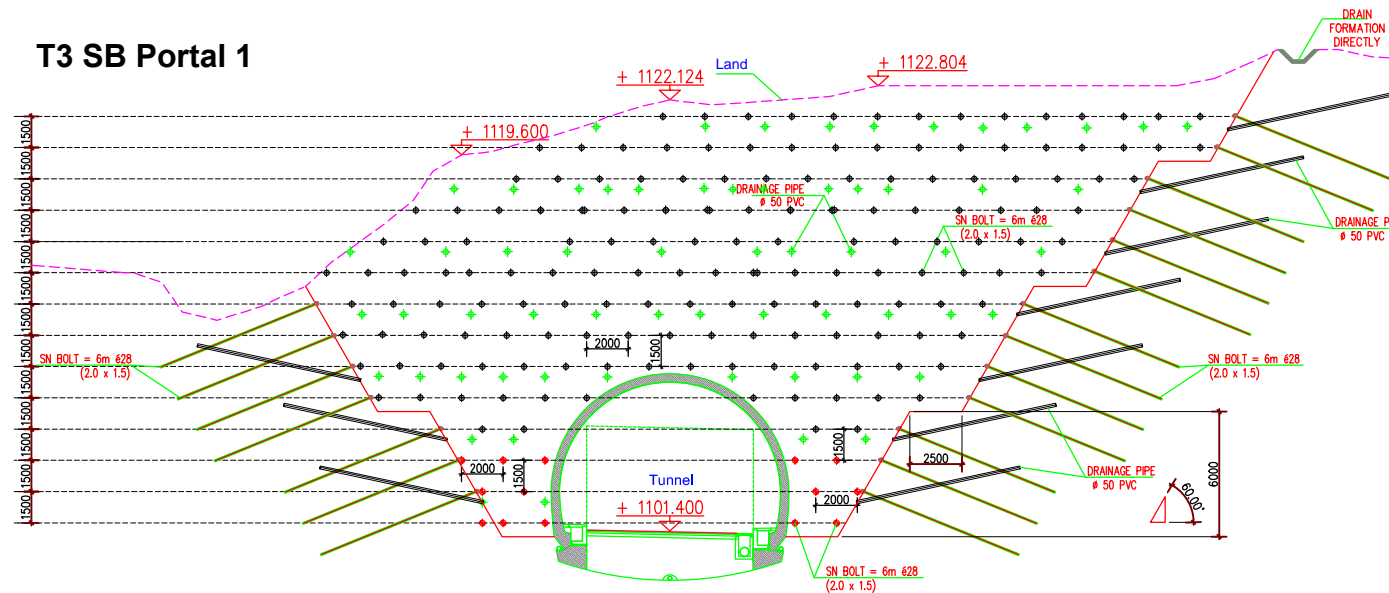
TO BANIHAL ▶



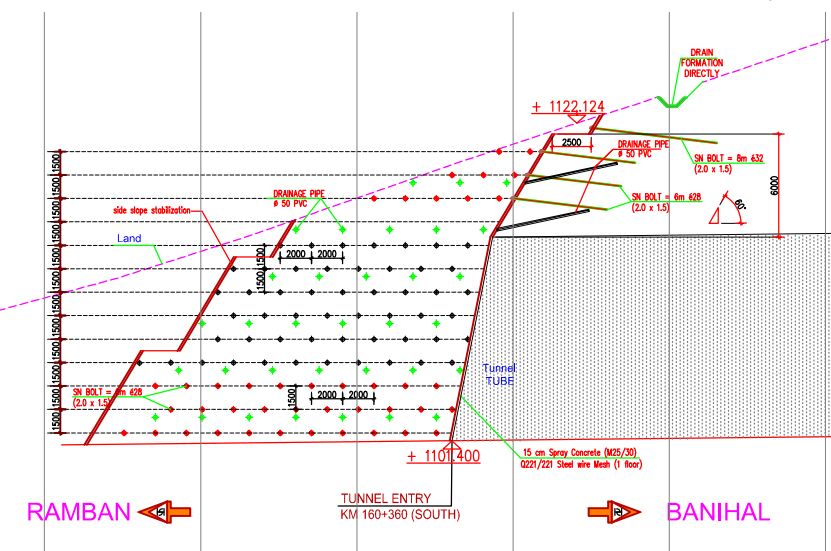
Material  
1-BOLT : #28mm TOR  
2- WRE MESH : Q221/221  
3-SPRAY CONCRETE : M20/25

Notes:  
1-TORQUE CALIBRATED TO FORM 2-TON FORCE IN THE NUTS BOLTA  
WILL BE BORED WITH THE KEY.  
2-OUT 5-6 cm. THE ENDS OF THE BOLT WILL BE CUT WITH OXYGEN.  
3-MESH STEEL RADIAL DIRECTION 3 EYE, LONGITUDINAL DIRECTION 2 EYE OVERLAP.  
4-IF AMBIENT CONDITIONS ARE MORE VARIABLE THAN EXPECTED, THE BOLT AND WIP  
APPLICATION LENGTH, RANGE, SHAPE AND TYPE (SUPPORT SYSTEMS) ENGINEER AND  
WILL BE REVISED ON SITE WITH THE APPROVAL OF THE ADMINISTRATION.  
5-TUNNEL PORTAL EXCAVATION; EXCAVATION STAGE HEIGHT 2.5m. TO BE DONE,  
AN UPPER SHEV EXCAVATION WILL NOT BE ENTERED INTO A SUB-REV EXCAVATIONS BEFORE COMPLETION.  
6-SUPPORT SYSTEM (Genus and Quantity) ENVIRONMENTAL CONDITIONS ENCOUNTERED DURING EXCAVATION  
BE REVISED BY THE ENGINEER AND THE ADMINISTRATION.  
7-BOLT FORAGES WHEN FACED WITH WATER SENSITIVE FLOORS DURING MANUFACTURING  
WILL BE MADE WITH DRY PUNCH.  
8-PG BOLT and IBO BOLT WHEN ALL BOLT need TO be DESIGNATED as SN BOLT  
REPLACEABLE  
9-COORDINATES ARE IN THE UTM SYSTEM.

### T3 SB Portal 1



### TUNNEL SECTION AT PORTAL CH: 160+360 (SOUTH)



परियोजना निर्देशक  
Project Director  
भारतीय राष्ट्रीय राजमार्ग प्राधिकरण, पी.यू. नई दिल्ली  
National Highway Authority of India, P.U., New Delhi

Divisional Forest Officer  
Ramban Forest Division  
Ramban

Client :-



NATIONAL HIGHWAYS  
AUTHORITY OF INDIA

Project Title :-

Construction of Four Laning of part of Ramban to Banihal Section of NH-1A (Now NH-44),  
from Ch.158+675 to Ch.164+660 (North Bound) and Ch.160+282 to Ch.163+368 (South  
Bound connecting with Existing Tunnel-T4) excluding Ch.161+544 to Ch.164+100 (North  
Bound) including Construction of Twin Tube Tunnel (Package-II)  
in the UT of Jammu & Kashmir on EPC Mode

Drawing Name :-

FINAL FEASIBILITY REPORT  
TUNNEL (AT3)  
CH: 160 + 360.00 (SOUTH)  
PORTAL EXCAVATION PLAN  
AND SECTIONS



Intercontinental Consultants & Technocrats Pvt. Ltd.,  
in Joint Venture with  
ALTINOK Consulting Engineering Inc.  
A-8, Green Park, New Delhi - 110016, India

Prepared by  
YGP

Designed by  
ANP

Checked by  
SWB

Approved by  
Sandip  
Bhattacharjee

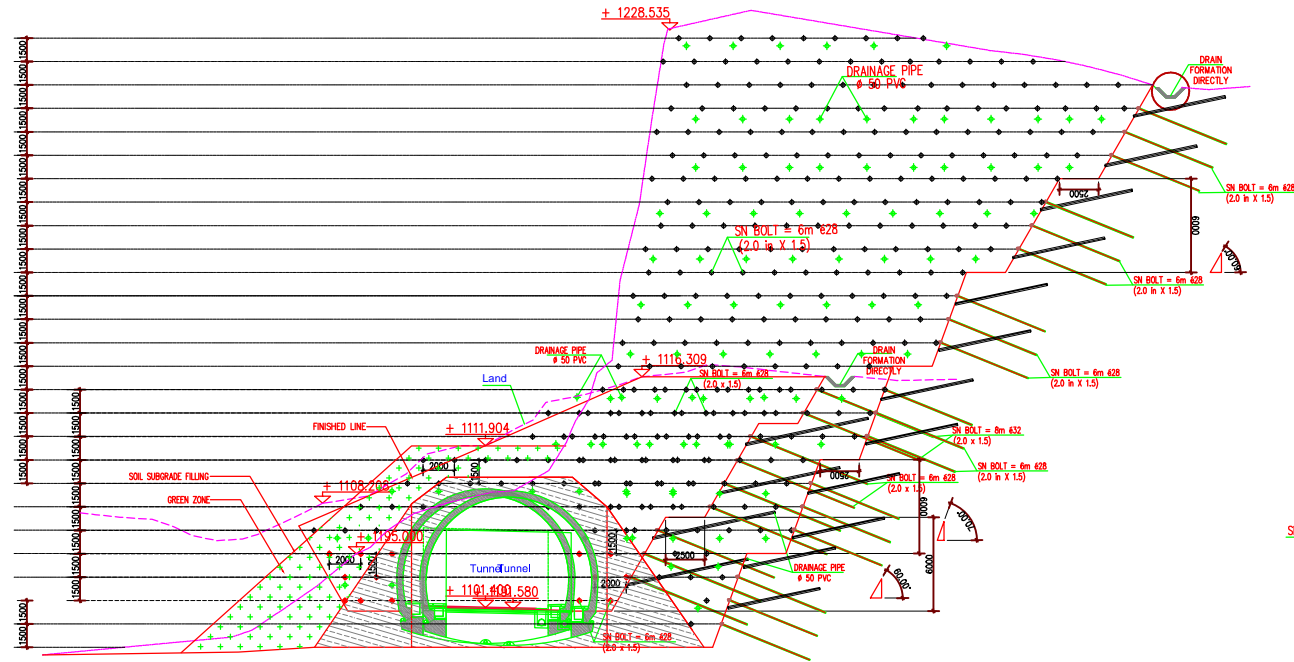
R1	June - 2021	Initial Plan
R0	March - 2021	Initial Plan
Revisions	Date	Description
Revisions		
Drawing Title :- NHAI / RAM-BANI / SB/PD/ 02		Rev. R0
Scale:- N.T.S		



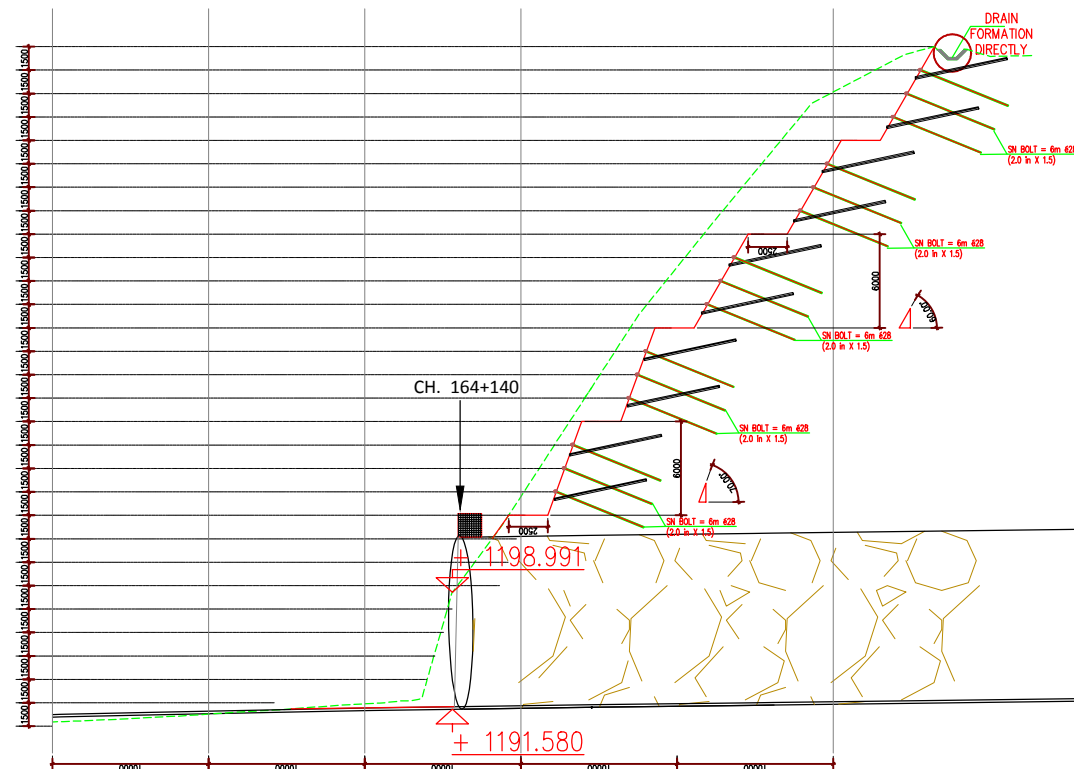
TO RAMBAN

TO BANIHAL

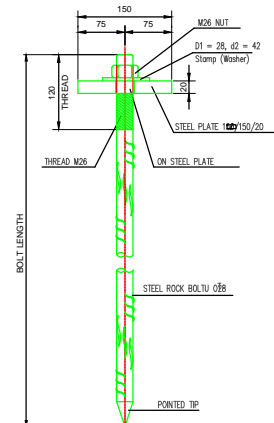
### T4 NB Portal 1



TUNNEL SECTION AT PORTAL CH: 164+140



LONG SECTION VIEW AT TUNNEL PORTAL CH: 164+140

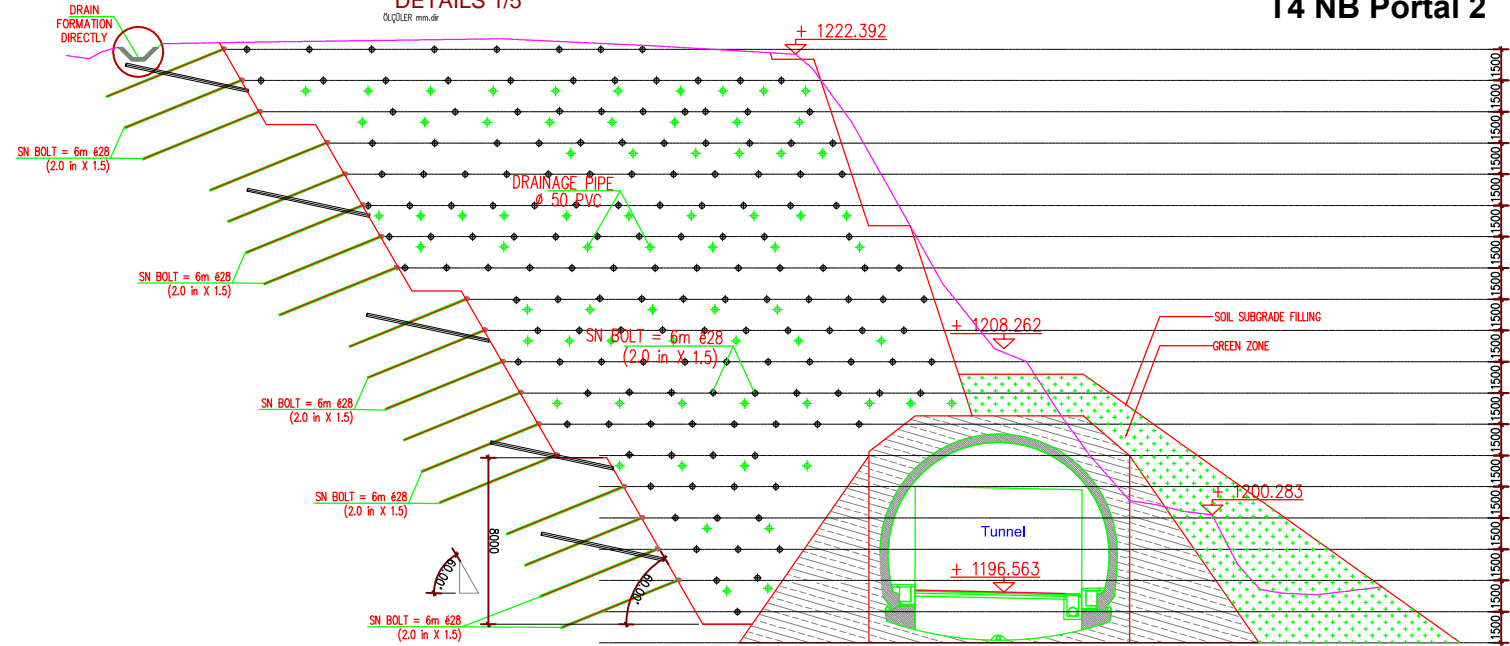


### FOR SN BOLT BILL OF MATERIALS

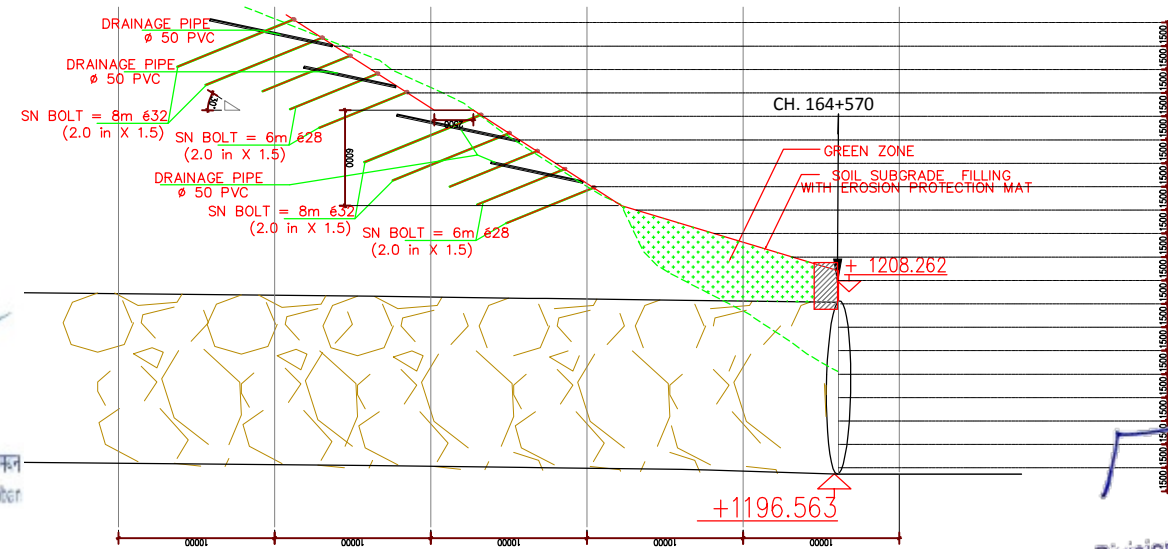
ROCK BOLT: 028-SI III(AT)  
STEEL PLATE: 150/150/20-ST 37  
BOLT SCREW: M26  
Nut: M26  
Stamp (Washer): D1 = 28mm, d2 = 42mm

Symbol	Description
+	(6-8M) DRAINAGE PIPE
+	SN BOLT = 6m 428
+	SN BOLT = 8m 432

### SN BOLT DETAILS 1/5



TUNNEL SECTION AT PORTAL CH: 164+570



LONG SECTION VIEW AT TUNNEL PORTAL CH: 164+570

Client :-



NATIONAL HIGHWAYS  
AUTHORITY OF INDIA

Project Title :-

Construction of Four Lining of part of Ramban to Banihal Section of NH-1A (Now NH-44), from Ch.158+675 to Ch.164+660 (North Bound) and Ch.160+282 to Ch.163+368 (South Bound) connecting with Existing Tunnel-T4) excluding Ch.161+544 to Ch.164+100 (North Bound) including Construction of Twin Tube Tunnel (Package-II) in the UT of Jammu & Kashmir on EPC Mode

Drawing Name :-

FINAL FEASIBILITY REPORT  
TUNNEL (AT4)  
CH: 164 + 140.00- CH: 164 + 570.00  
EXIT PORTAL EXCAVATION PLAN  
AND SECTIONS



Intercontinental Consultants & Technocrats Pvt. Ltd.,  
in Joint Venture with  
ALTINOK Consulting Engineering Inc.  
A-8, Green Park, New Delhi - 110016, India

Prepared by  
YGP

Designed by  
ANP

Checked by  
SWB

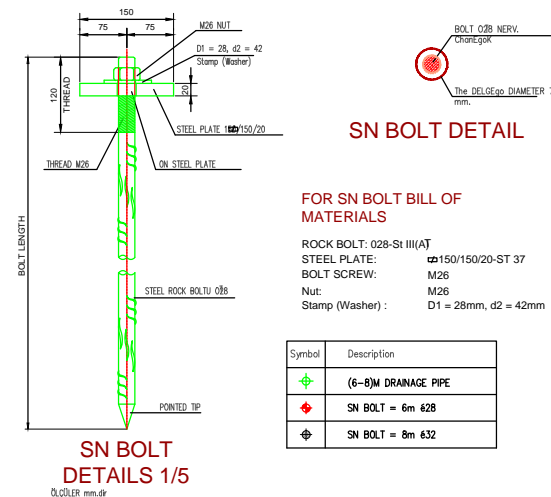
Approved by  
Sandip Bhattacharjee

R1	June - 2021	Initial Plan
R0	March - 2021	Initial Plan
Revisions	Date	Description
Revisions		
Drawing Title :- NHAI / RAM-BANI / NB/PD/ 03		
Scale:- N.T.S		
Rev. R0		



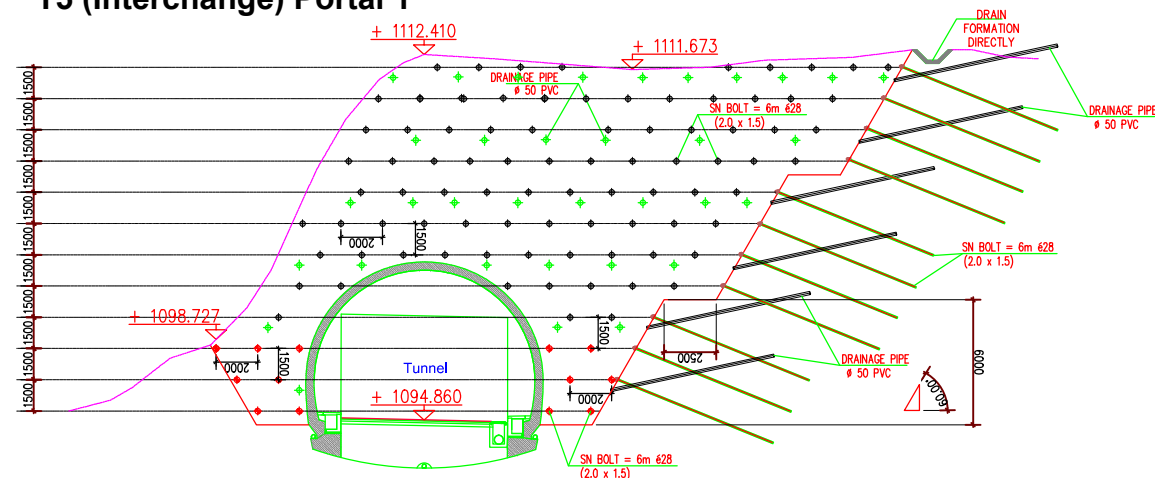
TO RAMBAN

TO BANIHAL

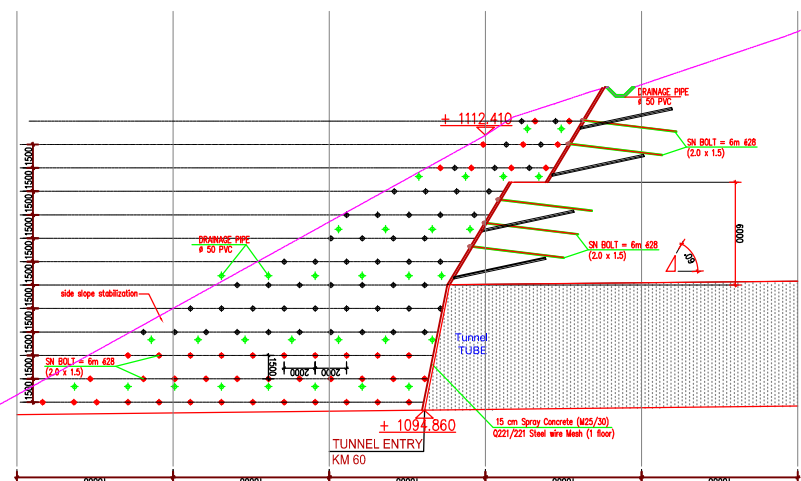


- Material:  
1-BOLT :  $\phi 28$ mm TOR  
2- WIRE MESH : Q221/221  
3-SPRAY CONCRETE : M20/25
- Notes:  
1-TORQUE CALIBRATED TO FORM 2-TON FORCE IN THE NUTS BOLTA WILL BE BORED WITH THE KEY.  
2-OUT 5-6 cm. THE ENDS OF THE BOLT WILL BE CUT WITH OXYGEN.  
3-MESH STEEL RADIAL DIRECTION 3 EYE, LONGITUDINAL DIRECTION 2 EYE OVERLAP.  
4-IF AMBIENT CONDITIONS ARE MORE VARIABLE THAN EXPECTED, THE BOLT AND WIP APPLICATION LENGTH, RANGE, SHAPE AND TYPE (SUPPORT SYSTEMS) ENGINEER AND WILL BE REVISED ON SITE WITH THE APPROVAL OF THE ADMINISTRATION.  
5-TUNNEL PORTAL EXCAVATION; EXCAVATION STAGE HEIGHT 2.5m. TO BE DONE, AN UPPER SHEV EXCAVATION WILL NOT BE ENTERED INTO A SUB-REV EXCAVATIONS BEFORE COMPLETION.  
6-SUPPORT SYSTEM (Genus and Quantity) ENVIRONMENTAL CONDITIONS ENCOUNTERED DURING EXCAVATION BE REVISED BY THE ENGINEER AND THE ADMINISTRATION.  
7-BOLT FORAGES WHEN FACED WITH WATER SENSITIVE FLOORS DURING MANUFACTURING WILL BE MADE WITH DRY PUNCH.  
8-PG BOLT AND IBO BOLT WHEN ALL BOLT need to be DESIGNATED as SN BOLT REPLACEABLE  
9-COORDINATES ARE IN THE UTM SYSTEM.

### T5 (Interchange) Portal 1

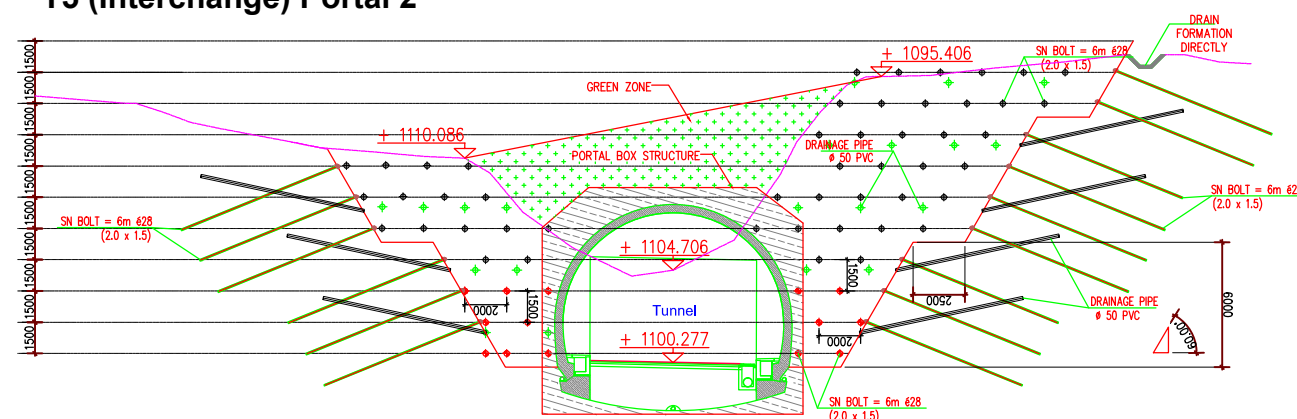


TUNNEL SECTION AT PORTAL CH : 0+060

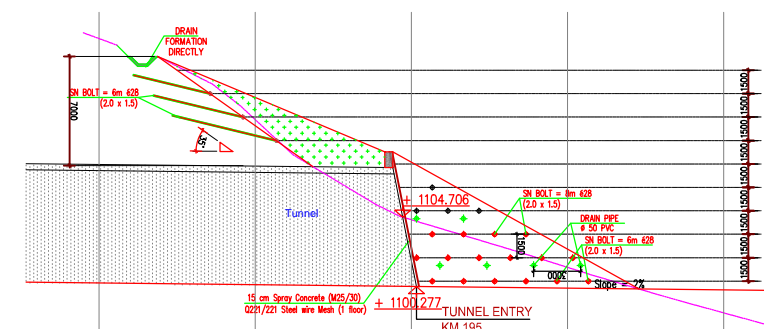


LONG SECTION VIEW AT TUNNEL PORTAL CH : 0+060

### T5 (Interchange) Portal 2



TUNNEL SECTION AT PORTAL CH : 0+195



LONG SECTION VIEW AT TUNNEL PORTAL CH : 0+195

Client :-



NATIONAL HIGHWAYS  
AUTHORITY OF INDIA

Project Title :-

Construction of Four Laning of part of Ramban to Banihal Section of NH-1A (Now NH-44), from Ch.158+675 to Ch.164+660 (North Bound) and Ch.160+282 to Ch.163+368 (South Bound) connecting with Existing Tunnel-T4) excluding Ch.161+544 to Ch.164+100 (North Bound) including Construction of Twin Tube Tunnel (Package-II) in the UT of Jammu & Kashmir on EPC Mode

Drawing Name :-

FINAL FEASIBILITY REPORT  
DIGDOL INTERCHANGE  
RAMP TUNNEL  
CH : - KM 0+060 - CH : 0+195  
PORTAL EXCAVATION PLAN  
AND SECTIONS



Intercontinental Consultants & Technocrats Pvt. Ltd.,  
in Joint Venture with  
ALTINOK Consulting Engineering Inc.  
A-8, Green Park, New Delhi - 110016, India

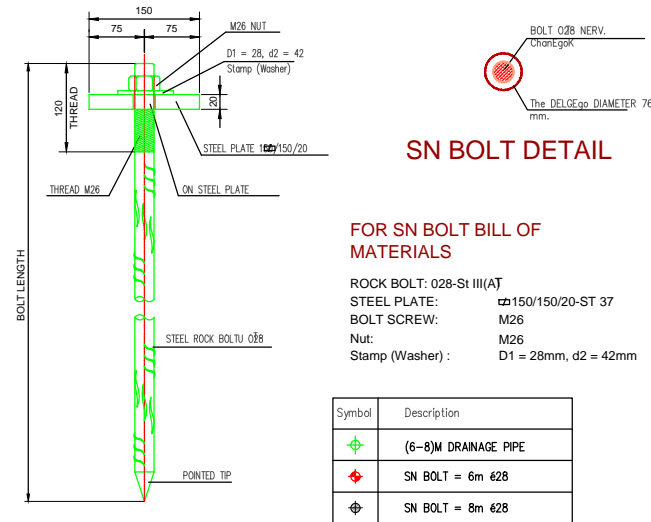
Prepared by  
YGP

Designed by  
ANP

Checked by  
SWB

Approved by  
Sandip Bhattacharjee

R1	June - 2021	Initial Plan
R0	March - 2021	Initial Plan
Revisions	Date	Description
Revisions		
Drawing Title :- NHAI / RAM-BANI / NB/PD/ 04		Rev. R0
Scale:- N.T.S		



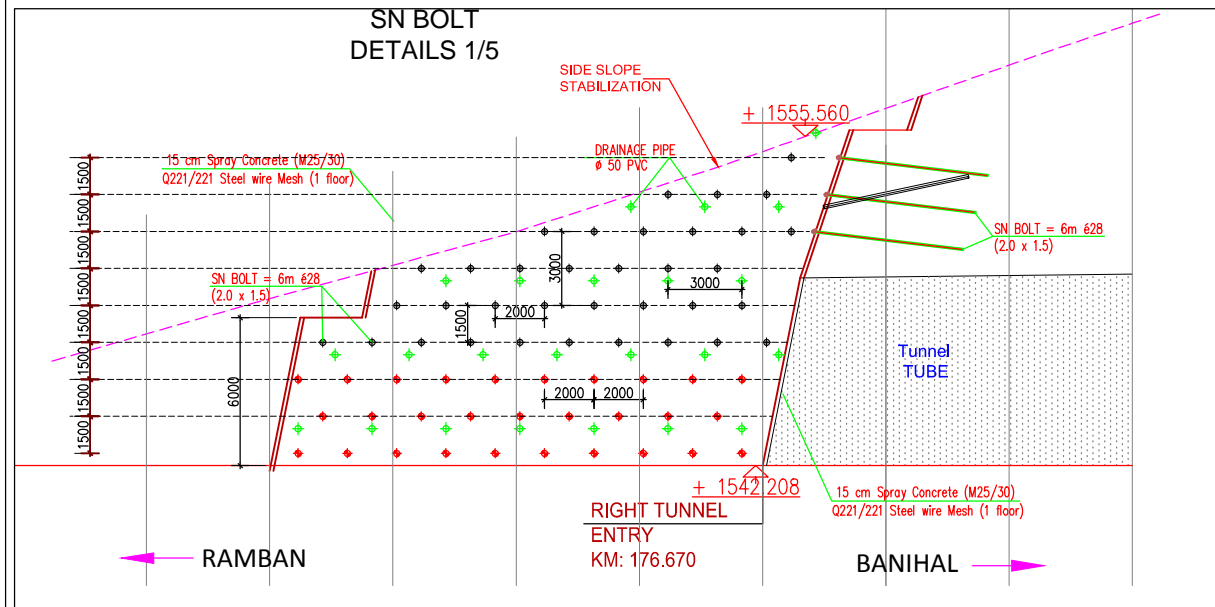
#### Notes:

- 1-TORQUE CALIBRATED TO FORM 2-TON FORCE IN THE NUTS BOLTD A WILL BE BORED WITH THE KEY.
- 2-OUT 5-6 cm. THE ENDS OF THE BOLT WILL BE CUT WITH OXYGEN.
- 3-MESH STEEL RADIAL DIRECTION 3 EYE, LONGITUDINAL DIRECTION 2 EYE OVERLAP.
- 4-IF AMBIENT CONDITIONS ARE MORE VARIABLE THAN EXPECTED, THE BOLT AND WIP APPLICATION LENGTH, RANGE, SHAPE AND TYPE (SUPPORT SYSTEMS) ENGINEER AND WILL BE REVISED ON SITE WITH THE APPROVAL OF THE ADMINISTRATION.
- 5-TUNNEL PORTAL EXCAVATION; EXCAVATION STAGE HEIGHT 2.5m. TO BE DONE, AN UPPER SHEV EXCAVATION WILL NOT BE ENTERED INTO A SUB-SHEV EXCAVATIONS BEFORE COMPLETION.
- 6-SUPPORT SYSTEM (Genus and Quantity) ENVIRONMENTAL CONDITIONS ENCOUNTERED DURING EXCAVATION BE REVISED BY THE ENGINEER AND THE ADMINISTRATION.

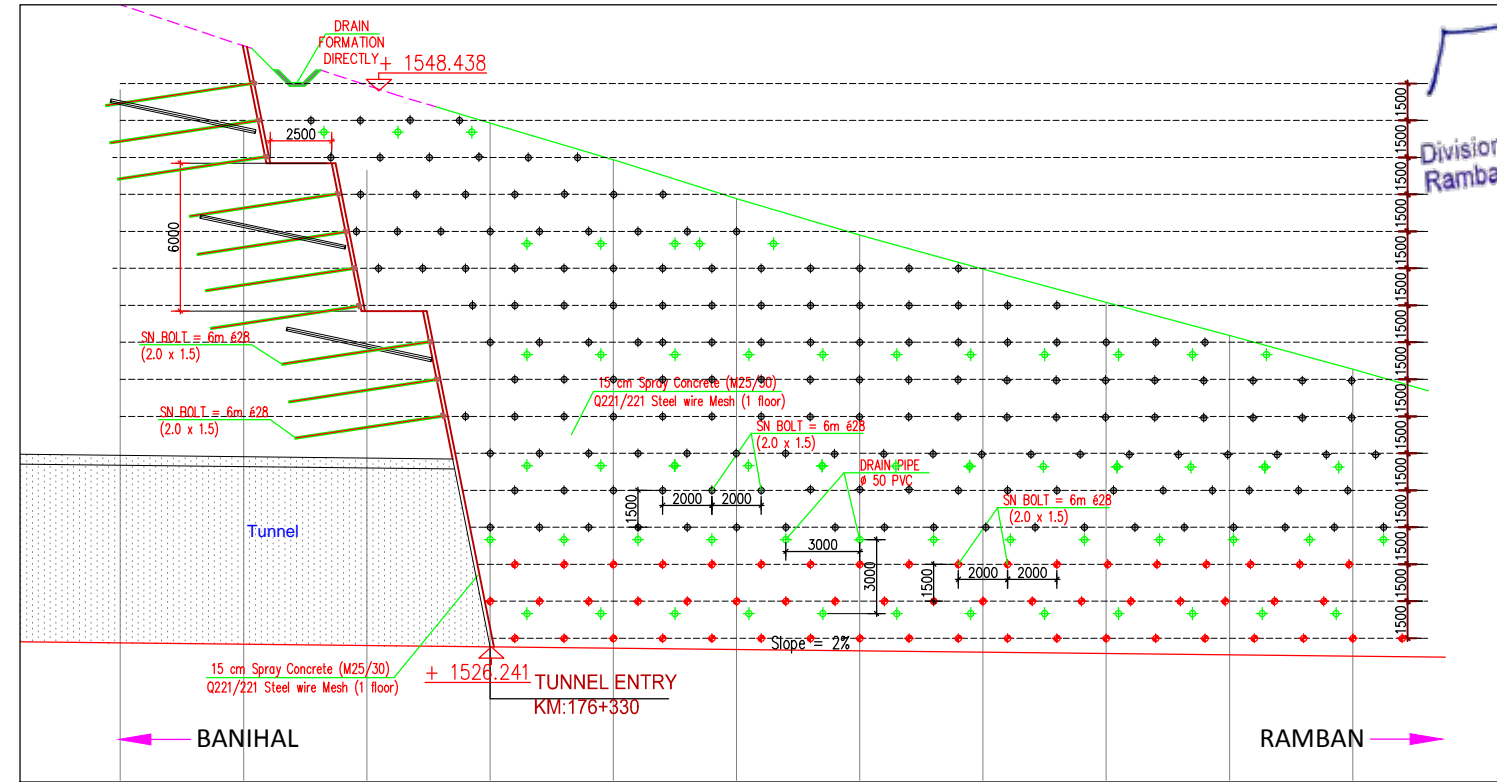
- 7-BOLT FORAGES WHEN FACED WITH WATER SENSITIVE FLOORS DURING MANUFACTURING WILL BE MADE WITH DRY PUNCH.
- 8-PG BOLT and IBO BOLT WHEN ALL BOLT need TO be DESIGNATED as SN BOLT REPLACEABLE
- 9-COORDINATES ARE IN THE UTM SYSTEM.

Material	
1-BOLT	: Ø28mm TOR
2- WIRE MESH	: Q221/221
3-SPRAY CONCRETE	: M20/25

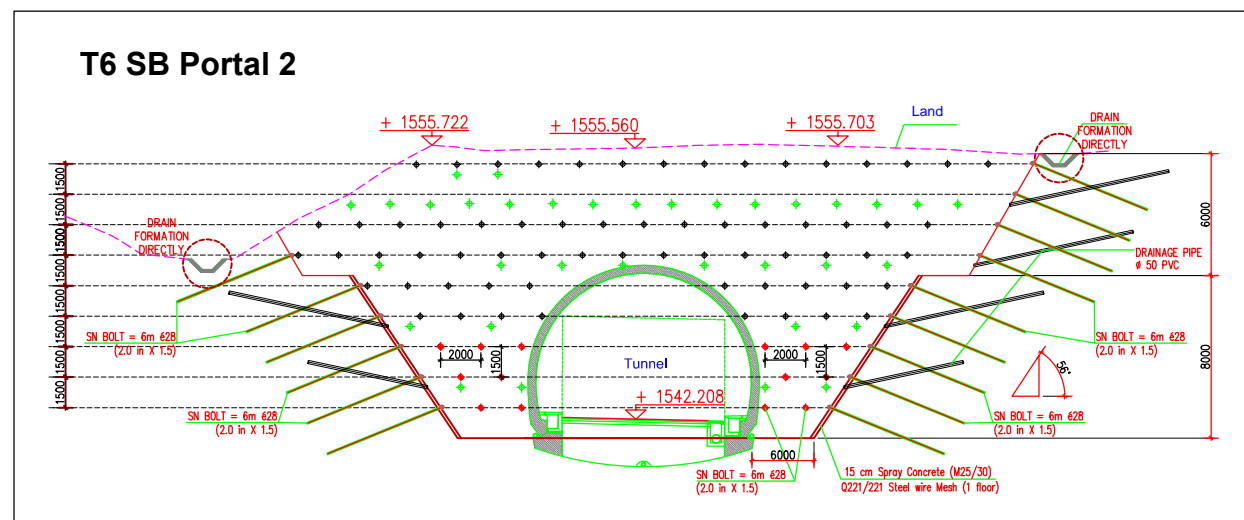
परिपोषण निदेशक  
 Project Director  
 भारतीय राष्ट्रीय राजमार्ग प्राधिकरण, पी.यू. रामबान  
 National Highway Authority of India, P.U. Ramban



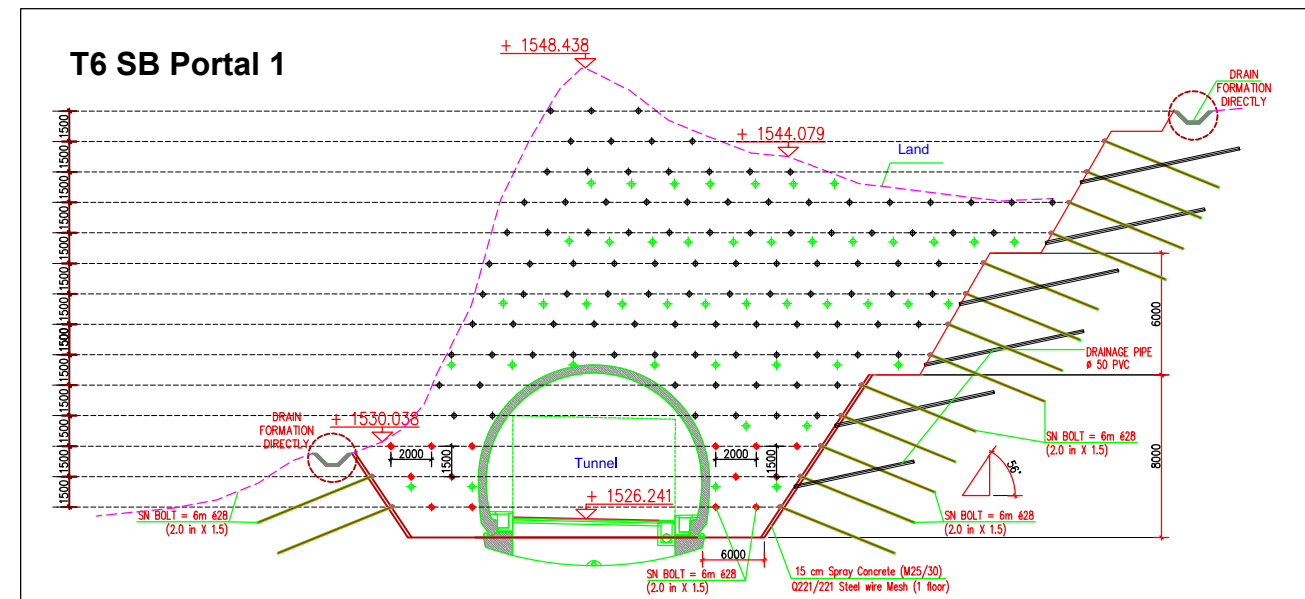
LONG SECTION VIEW AT TUNNEL PORTAL CH 176.670



LONG SECTION VIEW AT TUNNEL PORTAL CH 176+330



TUNNEL SECTION AT PORTAL CH 176+670



TUNNEL SECTION AT PORTAL CH 176+330

Client :-



NATIONAL HIGHWAYS  
 AUTHORITY OF INDIA

Project Title :-

From Design Ch.171+855 (NB)/ Ch.173+638 (SB) to Existing  
 Ch.180+300 (NB)/ Ch.181+700 (SB), (Section - II)

Drawing Name :-

FINAL FEASIBILITY REPORT  
 TUNNEL (AT5)  
 CH:176+670.00-CH: 176.330.00  
 PORTAL EXCAVATION PLAN  
 AND SECTIONS



Intercontinental Consultants & Technocrats Pvt. Ltd.,  
 in Joint Venture with  
 ALTINOK Consulting Engineering Inc.  
 A-8, Green Park, New Delhi - 110016, India

YGP  
 Prepared by

ANP  
 Designed by

SWB  
 Checked by

Sandip Bhattacharjee  
 Approved by

R1	June - 2021	Initial Plan
R0	February - 2021	Initial Plan
Revisions	Date	Description
Revisions		
Drawing Title :- NHAI / RAM - BAIN / PD / 01		Rev. R0
Scale - N.T.S.		