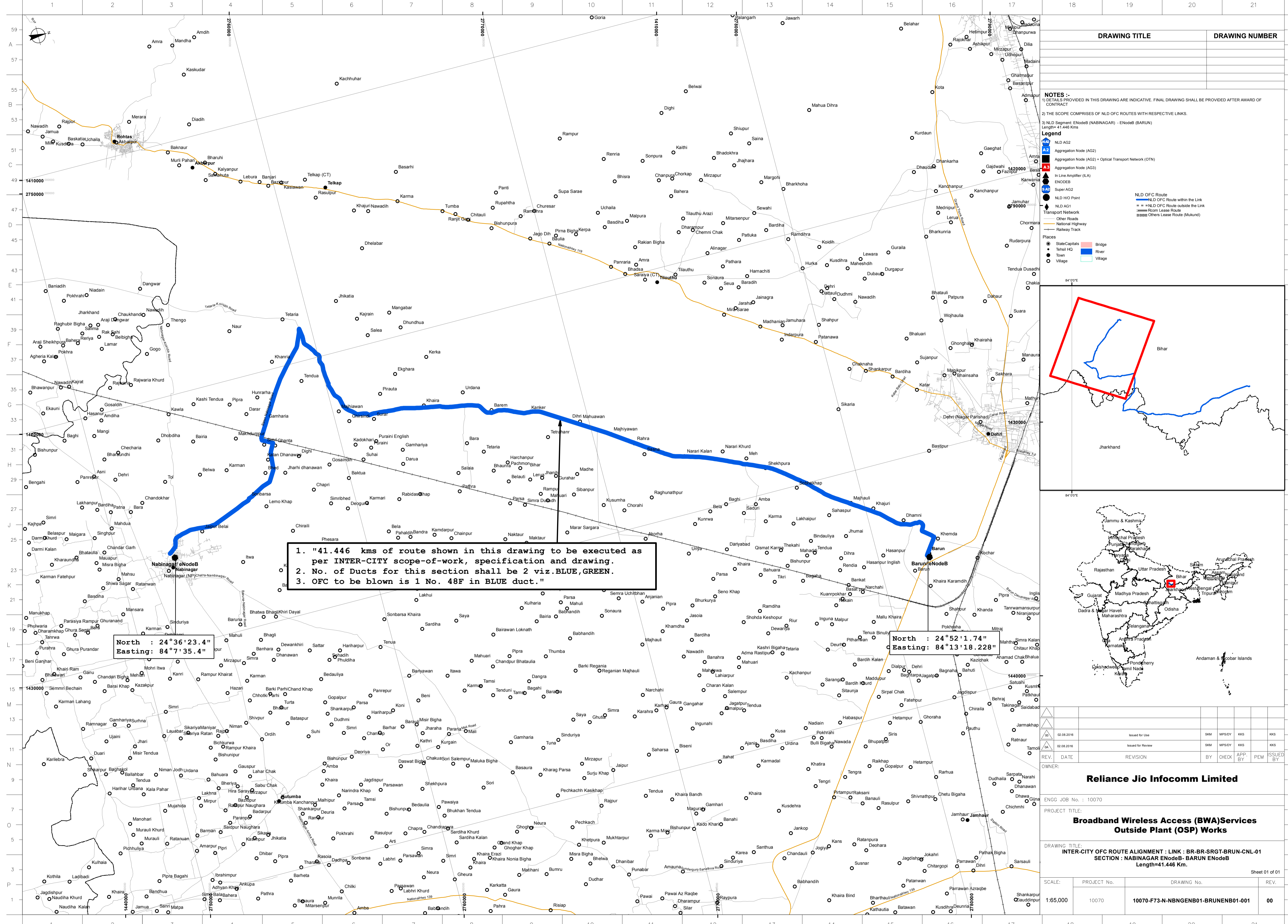


CONFIDENTIAL DOCUMENT. THIS DOCUMENT CONTAINS CONFIDENTIAL INFORMATION PROPRIETARY TO ENGINEERING DIV.-RILL. NEITHER WHOLE NOR PART OF THIS DOCUMENT MAY BE REPRODUCED, DISCLOSED WITHOUT PRIOR PERMISSION OF THE COPYRIGHT OWNER. ALL RIGHTS ARE RESERVED.



1. "41.446 kms of route shown in this drawing to be executed as per INTER-CITY scope-of-work, specification and drawing.  
 2. No. of Ducts for this section shall be 2 viz. BLUE, GREEN.  
 3. OFC to be blown is 1 No. 48F in BLUE duct."

North : 24°36'23.4"  
 Easting: 84°7'35.4"

North : 24°52'1.74"  
 Easting: 84°13'18.228"

| DRAWING TITLE | DRAWING NUMBER |
|---------------|----------------|
|               |                |

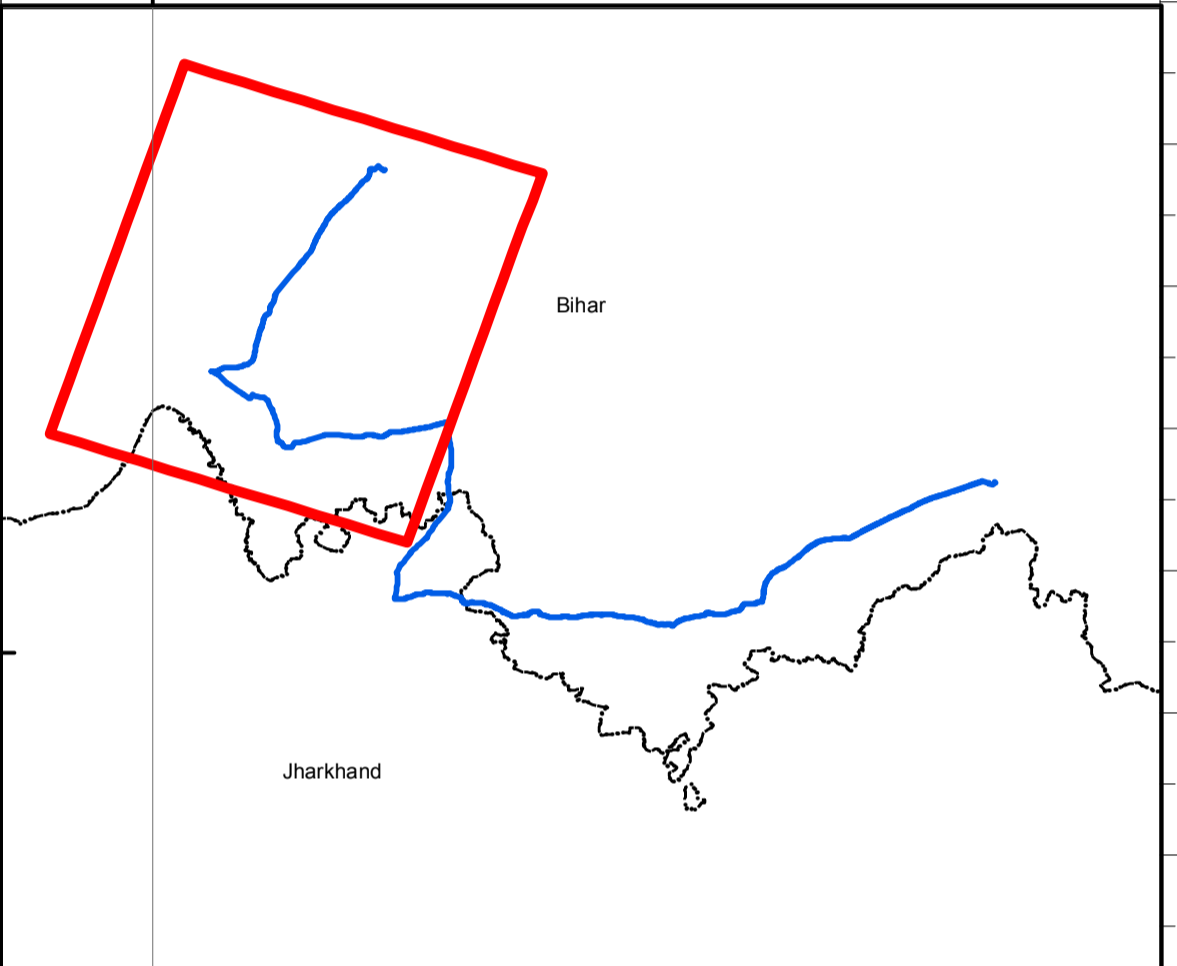
**NOTES :-**  
 1) DETAILS PROVIDED IN THIS DRAWING ARE INDICATIVE. FINAL DRAWING SHALL BE PROVIDED AFTER AWARD OF CONTRACT.  
 2) THE SCOPE COMPRISES OF NLD OFC ROUTES WITH RESPECTIVE LINKS.  
 3) NLD Segment: ENodeB (NABINAGAR) - ENodeB (BARUN)  
 Length= 41.446 Kms

**Legend**

|  |                        |  |  |
|--|------------------------|--|--|
|  | NLD AG2                |  | Aggregation Node (AG2) + Optical Transport Network (OTN) |
|  | Aggregation Node (AG3) |  | In Line Amplifier (ILA)                                  |
|  | ENODEB                 |  | Super AG2  |
|  | NLD HO Point           |  | NLD AG1  |
|  | Transport Network      |  | Other Roads  |
|  | National Highway       |  | Railway Track  |

**Places**

|  |                |  |                             |
|--|----------------|--|-----------------------------|
|  | State Capitals |  | Bridge                      |
|  | Town HQ        |  | River                       |
|  | Town           |  | Village                     |
|  | Village        |  | Others Lease Route (Mukund) |



| REV. | DATE       | REVISION          | BY  | CHECK  | APP. BY | PEM | ISSUED BY |
|------|------------|-------------------|-----|--------|---------|-----|-----------|
| 02   | 08/2016    | Issued for Use    | SKM | MPS/DY | KKS     | KKS | KKS       |
| 01   | 02/08/2016 | Issued for Review | SKM | MPS/DY | KKS     | KKS | KKS       |

**Reliance Jio Infocomm Limited**  
 ENGG JOB No. : 10070

**Broadband Wireless Access (BWA) Services Outside Plant (OSP) Works**  
 DRAWING TITLE: INTER-CITY OFC ROUTE ALIGNMENT : LINK : BR-BR-SRGT-BRUN-CNL-01  
 SECTION : NABINAGAR ENodeB- BARUN ENodeB  
 Length=41.446 Km.

| SCALE:   | PROJECT No. | DRAWING No.                         | REV. |
|----------|-------------|-------------------------------------|------|
| 1:65,000 | 10070       | 10070-F73-N-NBNGENB01-BRUNENB01-001 | 00   |