



निर्गत के लिए नहीं NOT FOR EXPORT

OPEN SERIES MAP

No. G45S7

Scale 1:50,000

G45S2 (72D/2)	Aurangabad BIHAR G45S6 (72D/6)	G45S10 (72D/10)
G45S3 (72D/3)	G45S7 (72D/7)	G45S11 (72D/11)
Palamu Jharkhand G45S4 (72D/4)	G45S8 (72D/8)	Chatra Jharkhand G45S12 (72D/12)

1 Rohās, BIHAR.  
2 Palamu, JHARKHAND.

भारतीय सर्वेक्षण विभाग SURVEY OF INDIA

1st Edition 2010.

Price : Rs. 50/-

CONVENTIONAL SYMBOLS

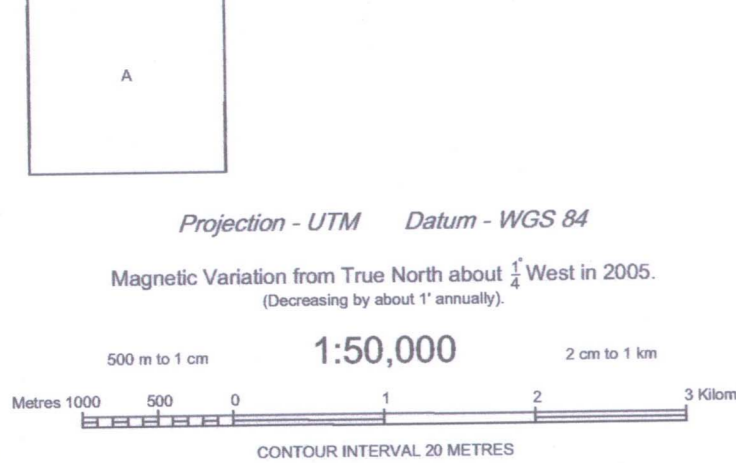
Express highway; with toll; with bridge; with distance stone	
Roads, metalled; according to importance	
Roads, double carriageway; according to importance	
Unmetalled road, Cart-track, Pack-track with pass, Foot-path	
Streams with track in bed; undefined; Canal	
Dams; masonry or rock-filled; earthwork; Weir	
River; dry with water channel; with island & rocks; Tidal river	
Submerged rocks. Shoal. Swamp. Reeds.	
Wells; lined; unlined. Tube-well. Spring. Tank; perennial; dry	
Embankments; road or rail; tank. Broken ground	
Railways; broad gauge; double; single with station; under constr.	
Railways; other gauge; double; single with distance stone; do.	
Mineral line or tramway. K.M. Cutting with tunnel	
Contours with sub-features. Rocky slopes. Cliffs	
Sand features: (1)flat. (2)band-tilt(permanent). (3)unes(shifting)	
Towns or Villages; inhabited; deserted. Fort	
Huts; permanent; temporary. Tower. Antiquities	
Temple. Chhatra. Church. Mosque. Idgah. Tomb. Graves	
Lighthouse. Lightship. Buoy; lighted; unlighted. Anchorage	
Mine. Vine on trellis. Grass. Scrub	
Palms; palmyra; other. Plantain. Conifer. Bamboo. Other trees	
Areas; cultivated; wooded. Surveyed tree	
Boundary, International	
state; demarcated; undemarcated	
district; subdivision; tahsil or thika; forest	
Boundary pillars; surveyed; unlocated	
Heights; triangulated station; point; approximate	
Benchmark; geodetic; tertiary; canal	
Post office. Telegraph office. Overhead tank	
Rest house or inspection bungalow. Circuit house. Police station	
Camping ground. Forest; reserved; protected	
Spaced names: administrative; locally or tribal	
Hospital. Dispensary. Veterinary Hospital / Dispensary	
Aerodrome. Helped. Tourist site	
Power line; with pylons surveyed; with poles unsurveyed	

NOTES

Heights are in metres and above Indian mean sea level.  
Contours are approximate.  
A relative height, *h*, represents the approximate height, in metres, between the top and bottom of a steep slope.  
Cart-racks and unmetalled roads in this sheet are generally motorable in dry season. Permission to use those inside forest areas and along the canal is square A2, is required from the Forest and Irrigation authorities respectively.  
Numerous wells and field-bounds occur throughout the cultivated portions of this sheet; only the important ones have been shown.  
Tanks, shown dry in this area, usually contain water from July to March.

COMPILATION INDEX

A. Surveyed during 1974-75. Updated for major details during 2006-07.



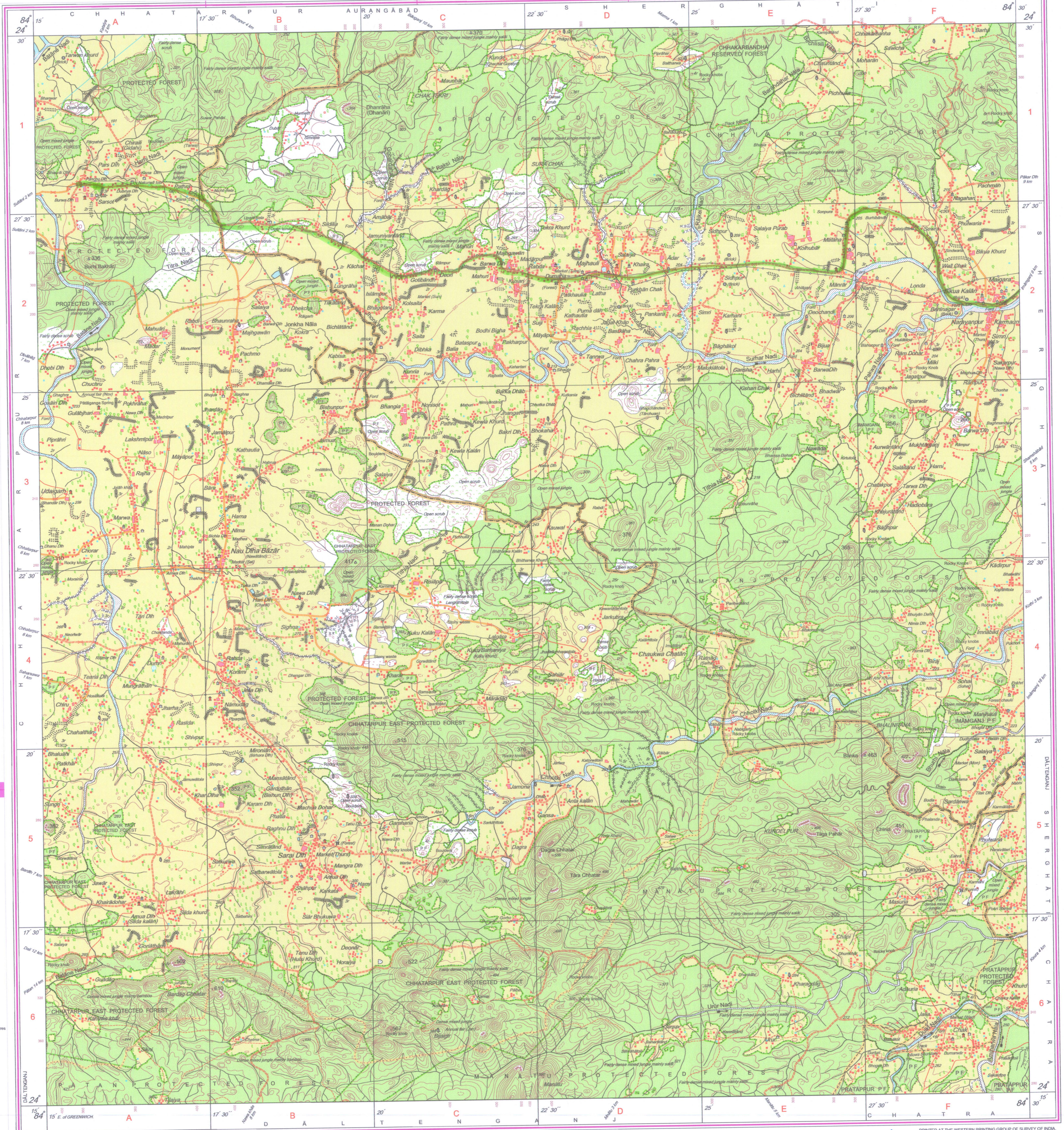
For further details about this map, please contact

Director  
Bihar Geo-Spatial Data Centre  
Survey of India, 164, Sheikhpura House, Sheikhpura  
Patna.

WEBSITE - www.surveyofindia.gov.in

Reproduction in whole or part by any means is prohibited without the written permission of Survey of India, the National Mapping Agency.

GOVERNMENT OF INDIA COPYRIGHT, 2010.



REG. No. - WPD D/10 (Bihar) GDC-150,000.

भारत के नक्शासंश्लेषक के निदेशन में प्रकाशित,  
Published under the direction of Surveyor General of India,  
Survey of India, Haldibarkala Estate, Post Box No. 37, Dehra Dun-248001 (Uttarakhand)  
Department of Science & Technology, Government of India.

PRINTED AT THE WESTERN PRINTING GROUP OF SURVEY OF INDIA.

192