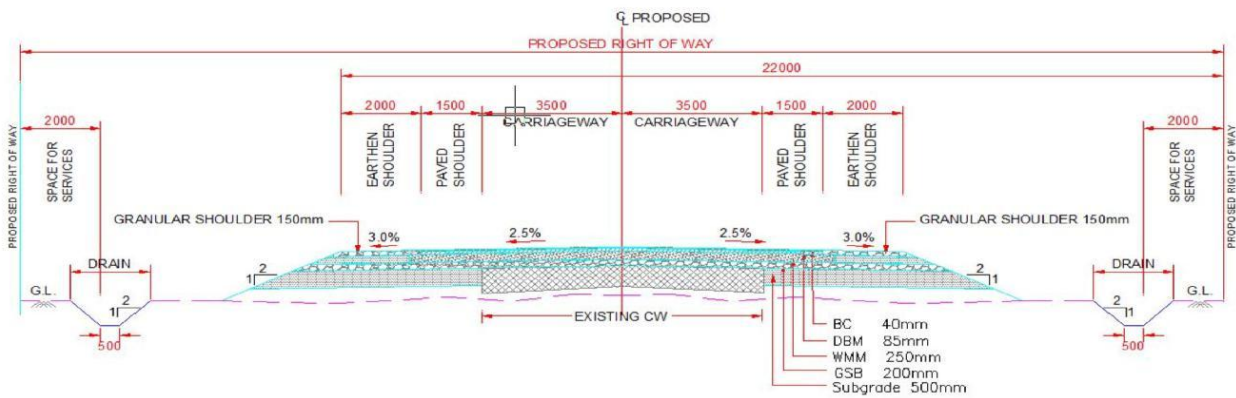
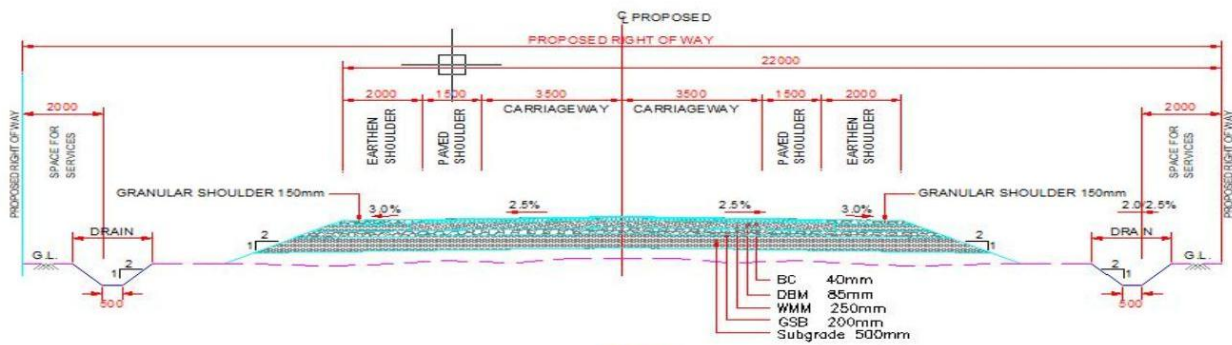


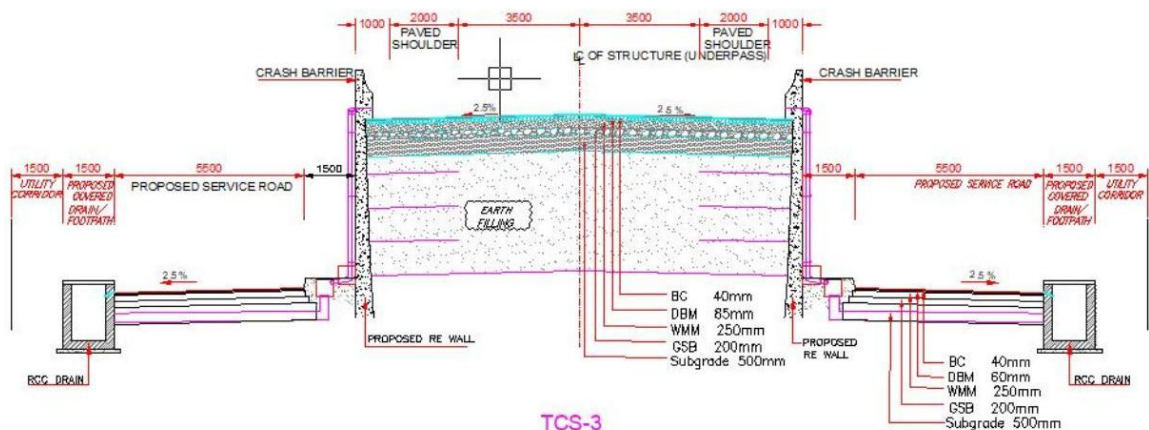
# Typical Cross Section of Bijnor to Kotwali Section of Package-IV -NH-709AD



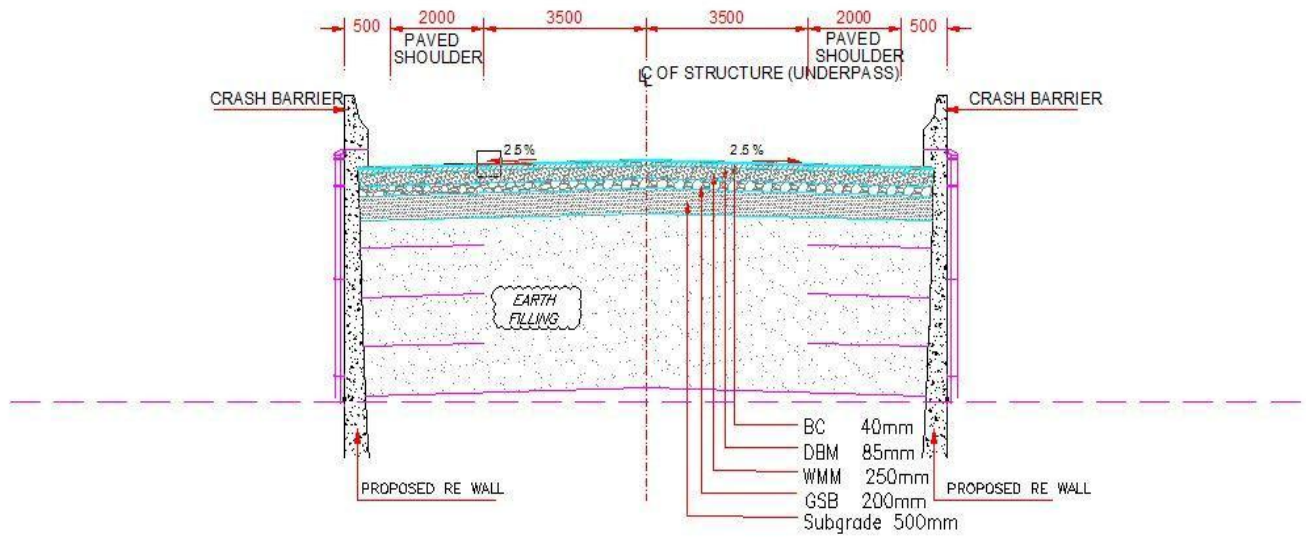
TCS-1  
2-LANE CARRIAGEWAY WITHOUT SERVICE ROAD CONCENTRIC WIDENING



TCS-2  
2-LANE CARRIAGEWAY WITHOUT SERVICE ROAD NEW CONSTRUCTION



TCS-3  
2-LANE CARRIAGEWAY AT APPROACHES TO VUP/PUP WITH BOTH SIDE SERVICE ROAD



**TCS-4**  
**2-LANE CARRIAGEWAY AT ROB APPROACHES WITHOUT SERVICE ROAD**