

RESTRICTED

FIRST EDITION

INDIA
REFER TO THIS MAP AS :- I:50,000
SHEET 78 1/7 FIRST EDITION

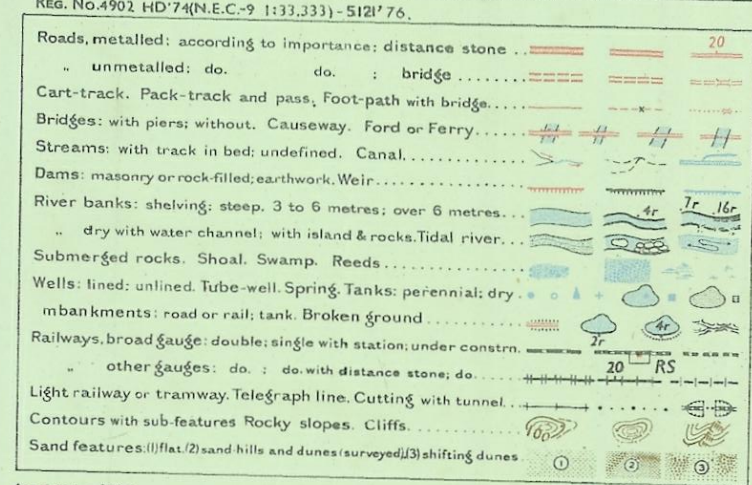
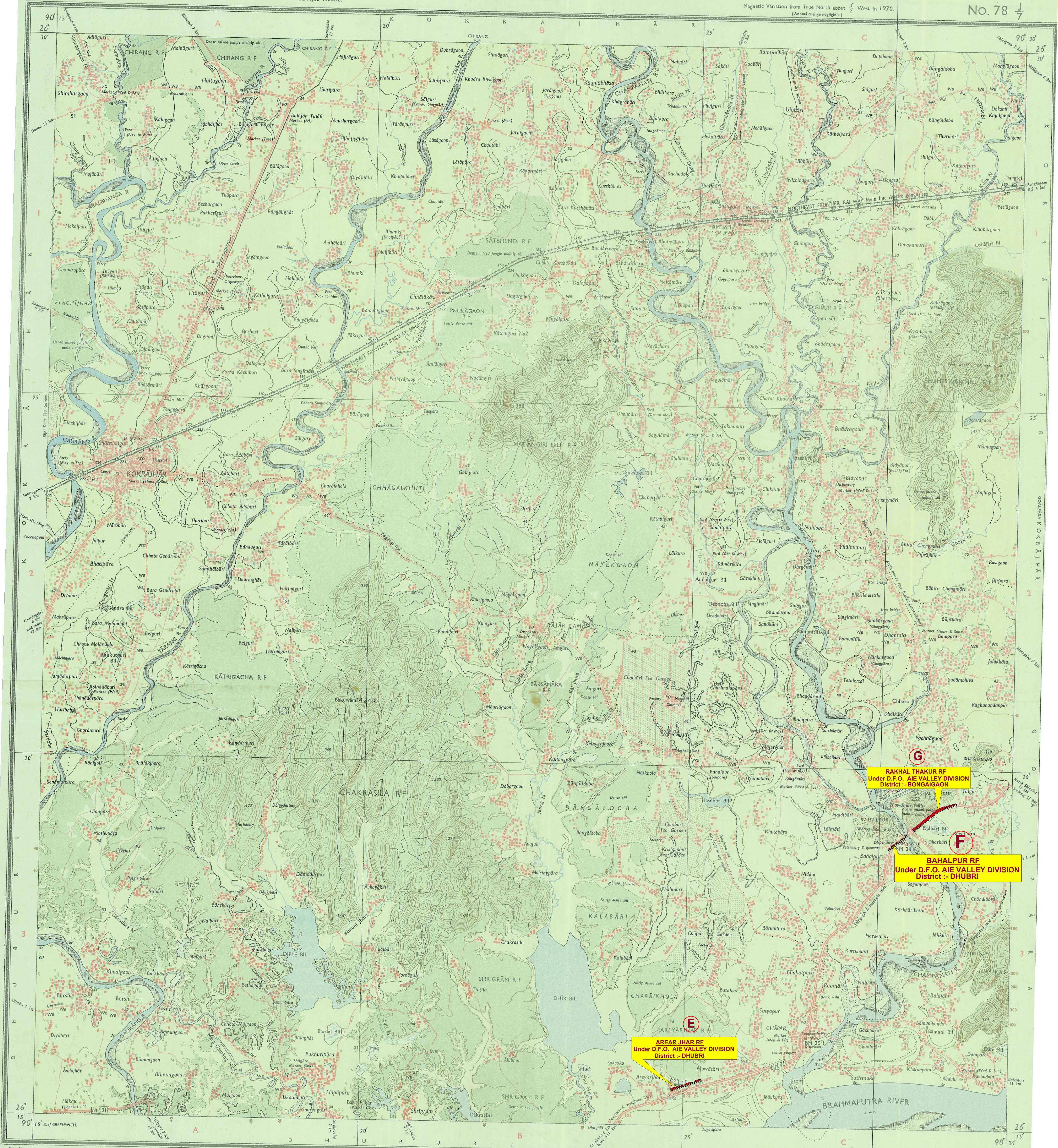
GOALPARA DISTRICT.

Surveyed 1969-70.

ASSAM

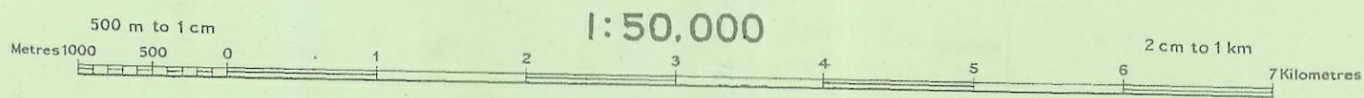
Magnetic Variation from True North about $\frac{1}{2}$ West in 1970.
(Annual change negligible).

No. 78 $\frac{1}{7}$



Index to Sheets

78 1/2	78 1/6	78 1/10
78 1/3	78 1/7	78 1/11
78 1/4	78 1/8	78 1/12



Water features are shown in blue where they generally contain water.
Cultivated areas are coloured yellow.
The exterior boundaries of areas of Reserved or Protected Forests are shown by green ridgelines.
Contours are approximate.
A relative height, Δ R, represents the approximate height, in metres, between the top and bottom of a steep slope.
Wooded areas are coloured green. Scattered trees and other vegetation are in green, but prominent surveyed trees are in black.

The triangulated heights and contours in this sheet have not been adjusted to the heights of the spirit-levelled bench-marks and may not be strictly in accordance with them.
The kilometre zone numbers along roads, railways and canals are shown in slant type, e.g., '5', whereas milestone numbers are shown in upright type, e.g., '5'.
The area adjoining the Brahmaputra River is liable to change owing to continual fluctuation in the course of the river and remains flooded during rainy season.
All unmetalled roads inside the Tea Gardens are motorable in dry season. Permission to use these roads is required from the Tea Garden authorities.
Boundaries of Reserved Forests have not been shown for want of information.
The alignments of the subdivision boundaries, shown on this sheet, are based on the information, supplied by the Deputy Director of Surveys, Assam, but have yet to be verified.

Administrative Index

GOALPARA

Points as the BHOLO, Purnea, Gopur, Survey or Inva.

Towns or Villages: inhabited, deserted, Fort,	10	10	10
Huts, permanent, temporary, Tower, Antiquities,	10	10	10
Temples, Chhatra, Church, Mosque, Idgh, Tomb, Graves,	10	10	10
Lighthouses, Lightship, Buoys, lighted, unlighted, Anchorage,	10	10	10
Mine, Vine, or trail, Grass, Scrub,	10	10	10
Palms: palm, other, Plantain, Conifer, Bamboo, Other trees,	10	10	10
Boundary: international,	10	10	10
Height: triangulated, station, points, approximate,	10	10	10
Bench-mark: geodetic, tertiary, canal,	10	10	10
Post office, Telegraph office, Combined office, Police station,	10	10	10
Bandhows, Jha or treasure, inspection, Bank house,	10	10	10
Circuit house, Camping ground, forest, reserved,	10	10	10
Spaced names: administrative, locality or tribal,	10	10	10

GOVERNMENT OF INDIA COPYRIGHT, 1974.

Price: Five Rupees.

RESTRICTED

This map is NOT to be published, copied or reproduced in part or in whole either by photography or by any other means: should be kept in safe custody and handled by authorized persons only.

REFERENCES
NH 31 National Highway No. 31.
WB Wooden bridge.