

बिहार
BIHAR

FIRST EDITION

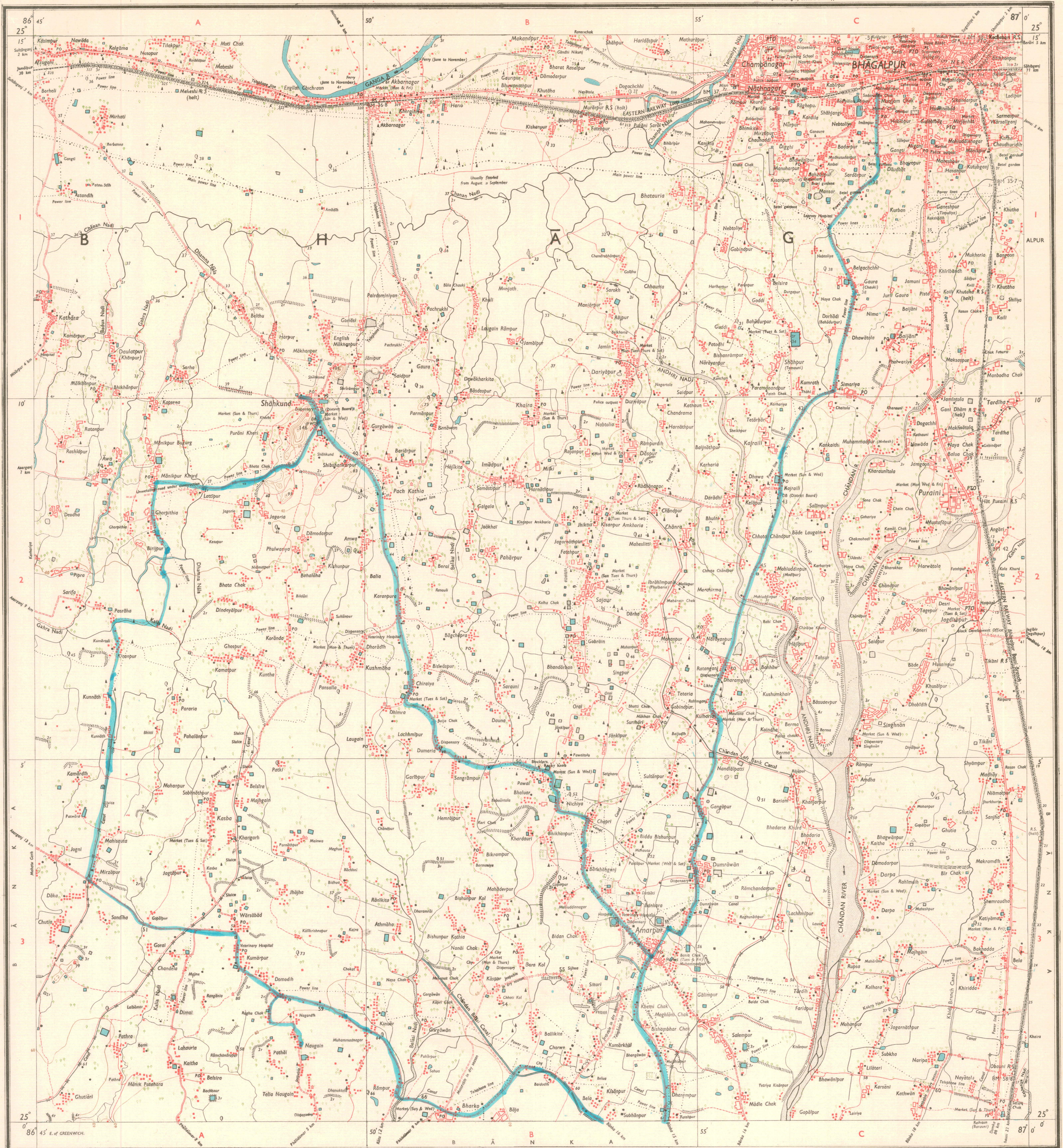
Magnetic Variation from True North about 1° West in 1975.
(Decreasing by about $2'$ annually)

भारत INDIA
REFER TO THIS MAP AS : I:50,000
SHEET 72 K/16 FIRST EDITION

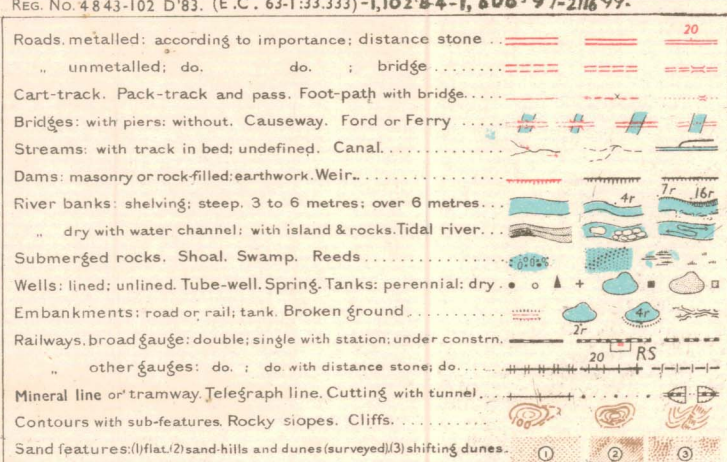
No. 72 K/16

BHAGALPUR DISTRICT.

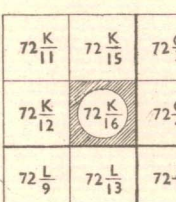
Surveyed 1978-79.



Ref. No. 4443-102 D 93. (E.C. 63-133333)-1102-64-1, 606-97-216-99.



Index to Sheets



500 m to 1 cm

1:50,000

2 cm to 1 km

HEIGHTS & CONTOURS IN METRES
CONTOUR INTERVAL 20 METRES

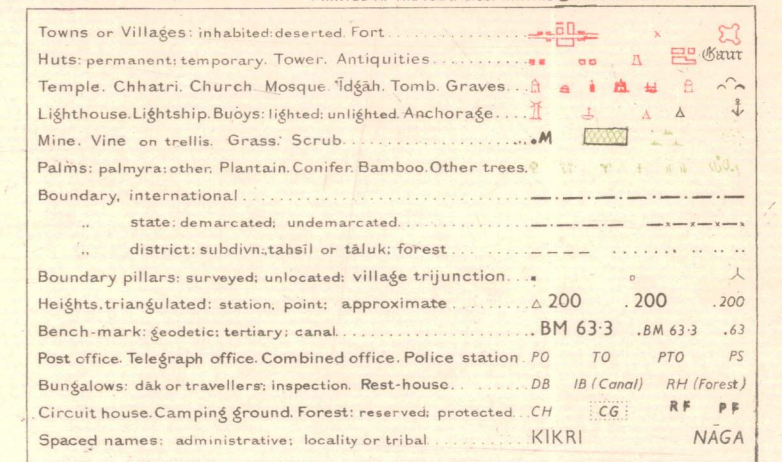
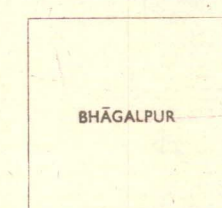
* Water features are shown in blue where they generally contain water.
* Cultivated areas are coloured yellow.
The exterior boundaries of areas of Reserved or Protected Forests are shown by green ribbons.

Contours are approximate.
A relative height, h , represents the approximate height, in metres, between the top and bottom of a steep slope.
Wooded areas are coloured green. Scattered trees and other vegetation are in black, but prominent surveyed trees are in black.

* Not applicable.

The triangulated heights and contours in this sheet have not been adjusted to the heights of the spirit-levelled bench-marks and may not be strictly in accordance with them.
The kilometre scale: numbers along roads and railways are shown in slant type, e.g., '5' whereas milestone numbers are shown in upright type, e.g., '5'.

Administrative Index



1st Edition 1983.
(Previous Edition on 1:63,000 scale: Preliminary 1971; 1st 1973).

REFER TO THIS MAP AS : I:50,000
SHEET 72 K/16 FIRST EDITION

INDIA भारत

REFERENCES

OT Overhead tank.
City City.
PWD Public Works Department.
NER North Eastern Railway.

GOVERNMENT OF INDIA COPYRIGHT, 1983.

Price: Twenty Rupees.

Revised Price:
Rs. 118/-