

बिहार
BIHAR

FIRST EDITION

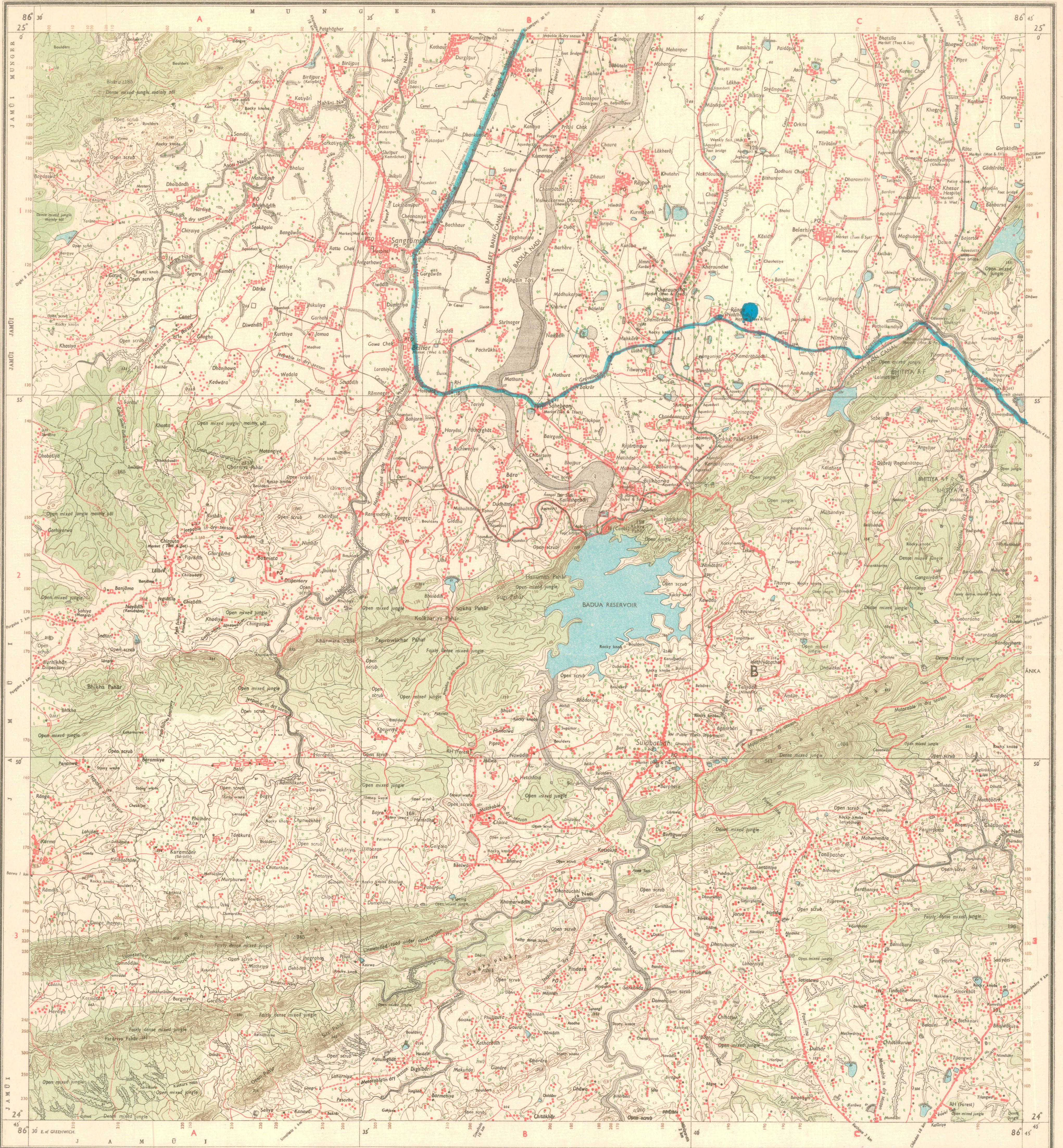
Magnetic Variation from True North about 4° West in 1975.
(Decreasing by about 2° annually).

INDIA
REFER TO THIS MAP AS :- 1:50,000
SHEET 72 L/9 FIRST EDITION

No. 72 L/9

BHAGALPUR AND
MUNGER DISTRICTS.

Surveyed 1976-77.



Res. No. 4/99 D 80 (E.C. 2-13333) - 700'82 - 13416'94.
Roads: metalled, according to importance; distance stone
unmetalled; do. do. bridge
Cart-track. Pack-track and pass. Foot-path with bridge
Bridges: with piers without. Causeway. Ford or Ferry.
Streams: with track in bed undefined. Canal.
Dams: masonry or rock-filled earthen. Weir.
River banks: shelving, steep, 3 to 6 metres over 6 metres.
dry with water channel; with island & rocks tidal river.
Submerged rocks. Shoal. Swamp. Reeds.
Wells: lined, unlined. Tube-well. Spring. Tank. Perennial. dry. o. a.
Embankments: road or rail, tank. Broken ground.
Railways: broad gauge; double; single with station under constr.
other gauges: do. do. with distance stone do.
Mineral line, or tramway. Telegraph line. Cutting with tunnel.
Contours with sub-features. Rocky slopes. Cliffs.
Sand features (flats, dunes, hills and dunes surrounded by shifting dunes).

1st Edition 1960.
Previous Edition on 1-inch scale: 1923/1st 1945.
REFER TO THIS MAP AS :- 1:50,000
SHEET 72 L/9 FIRST EDITION
INDIA भारत

Index to Sheets

72 K 8	72 K 7	72 K 6
72 J 5	72 J 4	72 J 3
72 I 4	72 I 3	72 I 2

500 m to 1 cm
1:50,000
2 cm to 1 km
7 Kilometres

HEIGHTS & CONTOURS IN METRES
CONTOUR INTERVAL 10 METRES

*Water features are shown in blue where they generally contain water.
*Cultivated areas are coloured yellow.
The exterior boundaries of areas of Reserved or Protected Forests are shown by green ribands.
Contours are approximate.
A relative height, e.g., 47' marked along a canal, indicates the height of the top of the canal embankment above the adjacent country.
Tanks, shown dry, in this area usually contain water from July to November.
Forest boundaries have not been shown for want of reliable information.

Administrative Index
BHAGALPUR
MUNGER.

Towns or Villages: inhabited; deserted. Fort.
Huts: permanent; temporary. Tower. Antiquities.
Temple. Chhatra. Church. Mosque. Idgah. Tomb. Graves.
Lighthouse. Lightship. Buoy: lighted; unlighted. Anchorage.
Mine. Vine on trails. Grass. Scrub.
Palms: palmyra; other. Plantain. Conifer. Bamboo. Other trees.
Boundary: international.
these demarcated: undemarcated.
district: subdivided; tahsil or taluk: forest.
Boundary pillars: surveyed; unlocated: village junction.
Heights: triangulated: station, point; approximate: BM 633 .BM 633 .BM 633 .
Post office. Telegraph office. Combined office. Police station. PO TO PTO PS
Bungalows: dak or travellers; inspection. Rest-house. DB B (Cm) RH (Forest)
Circuit house. Camping ground. Forest reserved; protected. CH (C) (C) (C) (C)
Spaced names: administrative: locally or tribal. KIKRI NAGA

GOVERNMENT OF INDIA COPYRIGHT, 1980
Printed: Thirteen Rupees.
Revised Price