

# MAP SHOWING GEO-REFERENCED SURVEY OF INDIA TOPOSHEET WITH FOREST LAND BOUNDARY & ROAD ALIGNMENT

Name of Project Widening and Curve Improvement on Existing Road Alignment between Existing chainage 17.350km to 19.600km of Kishangarh-Hanumangarh Mega Highway Project. Village-Chakbeer, Tehsil- Roopangarh, District-Ajmer (Rajasthan)

Proposal No. : FP/RJ/ROAD/18883/2016 (Applied Area : 4.47 Hectare)



OPEN SERIES MAP

No. G43I13

Scale 1:50,000

G43C12 (45/12)	G43C16 (45/16)	G43D4 (45/4)
Nagaur RAJASTHAN G43I9 (45/9)	<b>G43I13</b> (45/13)	G43J1 (45/1)
G43I10 (45/10)	G43I14 (45/14)	G43J2 (45/2)

1 Sikar, RAJASTHAN.  
2 Tonk, RAJASTHAN.

भारतीय सर्वेक्षण विभाग SURVEY OF INDIA

1st Edition 2011.

Price : Rs. 70/-

## CONVENTIONAL SYMBOLS

Express highway with toll, with bridge, with distance stone	
Roads, metalled, according to importance	
Roads, double camargway, according to importance	
Unmetalled road, Cart-track, Pack-track with pass, Foot-path	
Streams with track in bed, undefined, Canal	
Dams: masonry or rock-filled, earthenwork, Weir	
River: dry with water channel, with island & rocks, Tidal river	
Submerged rocks, Shoal, Swamp, Reeds	
Wells: lined, unlined, Tube-well, Spring, Tank, Perennial, dry	
Embankments: road or rail, tank, Broken ground	
Railways, broad gauge, double, single with station, under construction	
Railways, other gauges: double, single with distance stone, do.	
Mineral line or tramway, Rtn. Cutting with tunnel	
Contours with sub-features: Rocky slopes, Cliffs	
Bend features (1) fast, (2) sand-hills(permanent), (3) dunes(shifting)	
Towns or Villages: inhabited, deserted, Fort	
Huts: permanent, temporary, Tower, Antiquities	
Temple, Chhatra, Church, Mosque, Dargah, Tomb, Graves	
Lighthouse, Lightship, Bury, lighted, unlighted, Anchorage	
Mine, Vine on hillside, Grass, Scrub	
Palm, peimya, other, Plantain, Conifer, Bamboo, Other trees	
Areas cultivated, wooded, Surveyed tree	
Boundary, international	
state, demarcated, undemarcated	
district, subdivision, taluk or taluk, forest	
Boundary pillars: surveyed, uncoloured	
Heights: triangulated station, point, approximate	
Bench mark: geodetic, tertiary, aneroid	
Post office, Overhead tank	
Rest house or inspection bungalow, Circuit house, Police station	
Camping ground, Forest, reserved, protected	
Speeded names: administrative, locality or tribal	
Hospital, Dispensary, Veterinary Hospital / Dispensary	
Aerodrome, Helipad, Tourist site	
Power line: with pylons surveyed, with poles unsurveyed	

## REFERENCE

N/18/ North Western Railway.

## NOTES :-

Heights are in metres and above Indian mean sea level.  
Contours are approximate.  
A relative height, e.g., 50, represents the approximate height, in metres, between the top and bottom of a steep slope.  
A relative height, e.g., 100, against a well, indicates its total depth in metres.  
Unmetalled roads and cart tracks are generally metalled in dry season.  
Tanks, shown dry, in this area usually contain water from July to January.  
Cultivation is periodic and dependent on rainfall.  
Paku is a place where there is arrangement for saving drinking water.  
Digg is a tank which is used for collection of water.

## COMPILATION INDEX

A. Surveyed during 1969-70. Updated for major details during 2006-08.



Projection - UTM Datum - WGS 84

Magnetic Variation from True North about 1° East in 2005.  
(increasing by about 1° annually)

1:50,000



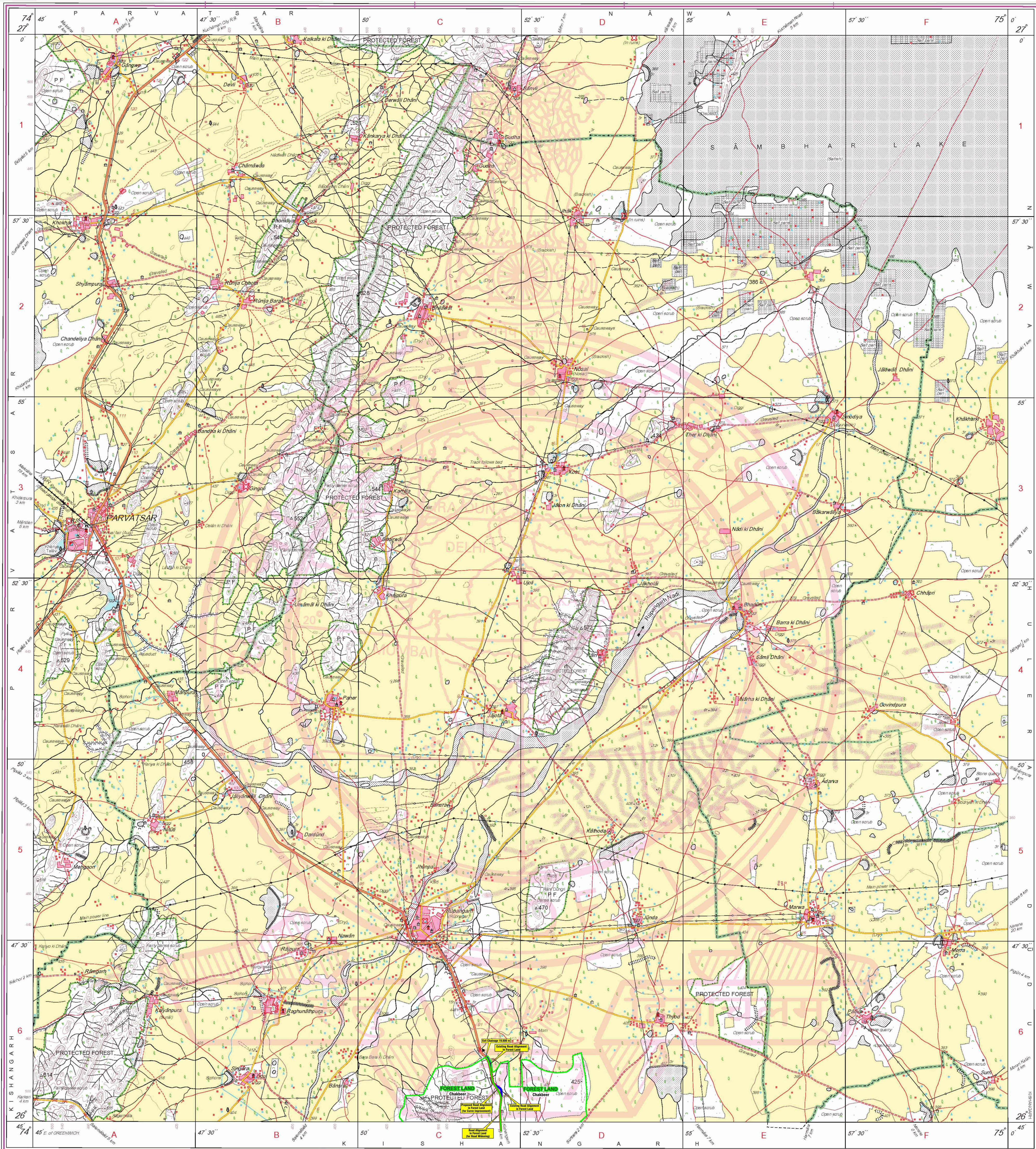
CONTOUR INTERVAL 20 METRES

For further details about this map, please contact  
Director  
Rajasthan Geo-Spatial Data Centre  
Survey of India  
Sector 10, Vidyaadhamgar  
Jaipur.

## Legend

	Road Alignment in Forest Area
	Forest Boundary
	Existing Mega Highway (Kishangarh-Hanumangarh)

GOVERNMENT OF INDIA COPYRIGHT, 2011.



REG. No. PDF - WPG D 11 (Rajasthan GDC-160,000)

भारत के सर्वेक्षक, सर्वेक्षण विभाग, भारत, के निर्देश में प्रकाशित।  
Published under the direction of Swarna Subba Rao, B.E., Surveyor General of India,  
Survey of India, Hathi Barkala Estate, Post Box No. 37, Dehra Dun-248001 (Uttarakhand)  
Department of Science & Technology, Government of India.

PRINTED AT THE WESTERN PRINTING GROUP OF SURVEY OF INDIA.