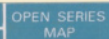


1



Scale 1:50,000

 F450M12 12-10-12 12-10-12	 F450M16 16-10-16 16-10-16	 F450N4 4-10-14 4-10-14
 F450S9 9-10-12 9-10-12	 F450I3 3-10-13 3-10-13	 F450T1 1-10-17 1-10-17
 F450S10 10-10-12 10-10-12	 F450S14 14-10-12 14-10-12	 F450T7 7-10-17 7-10-17

भारतीय सर्वेक्षण विभाग SURVEY OF INDIA

For October 2003 Price : Rs. 50

CONVENTIONAL SYMBOLS

<p>                          </p>	<p>                          </p>	<p>                          </p>	<p>                          </p>	<p>                          </p>	<p>                          </p>	<p>     </p>
--	--	--	--	--	--	--

201-42 National Highway No. 42 1982 Public Works Department

and further down the page:

[illegible]

COMBINATION INDEX

a. compiled from 1,25,000 survey, 1979-82. Updated for major

Spring 2009-10.

Projection - UTM Datum - WGS 84

Magnetic Variation from True North about $\frac{1}{2}^{\circ}$ West in 2000

Overall change significant.

1:50,000

100 to 250	1,500,000	2,000 to 3,000
------------	-----------	----------------

Figure 1: Schematic representation of the experimental design. The diagram shows a sequence of events: 'Stimulus presentation' (a box with a question mark), 'Response' (a box with a question mark), 'Feedback' (a box with a question mark), and 'Inter-trial interval' (a box with a question mark). The sequence is repeated for multiple trials, with a 'Start' box at the beginning and an 'End' box at the end.

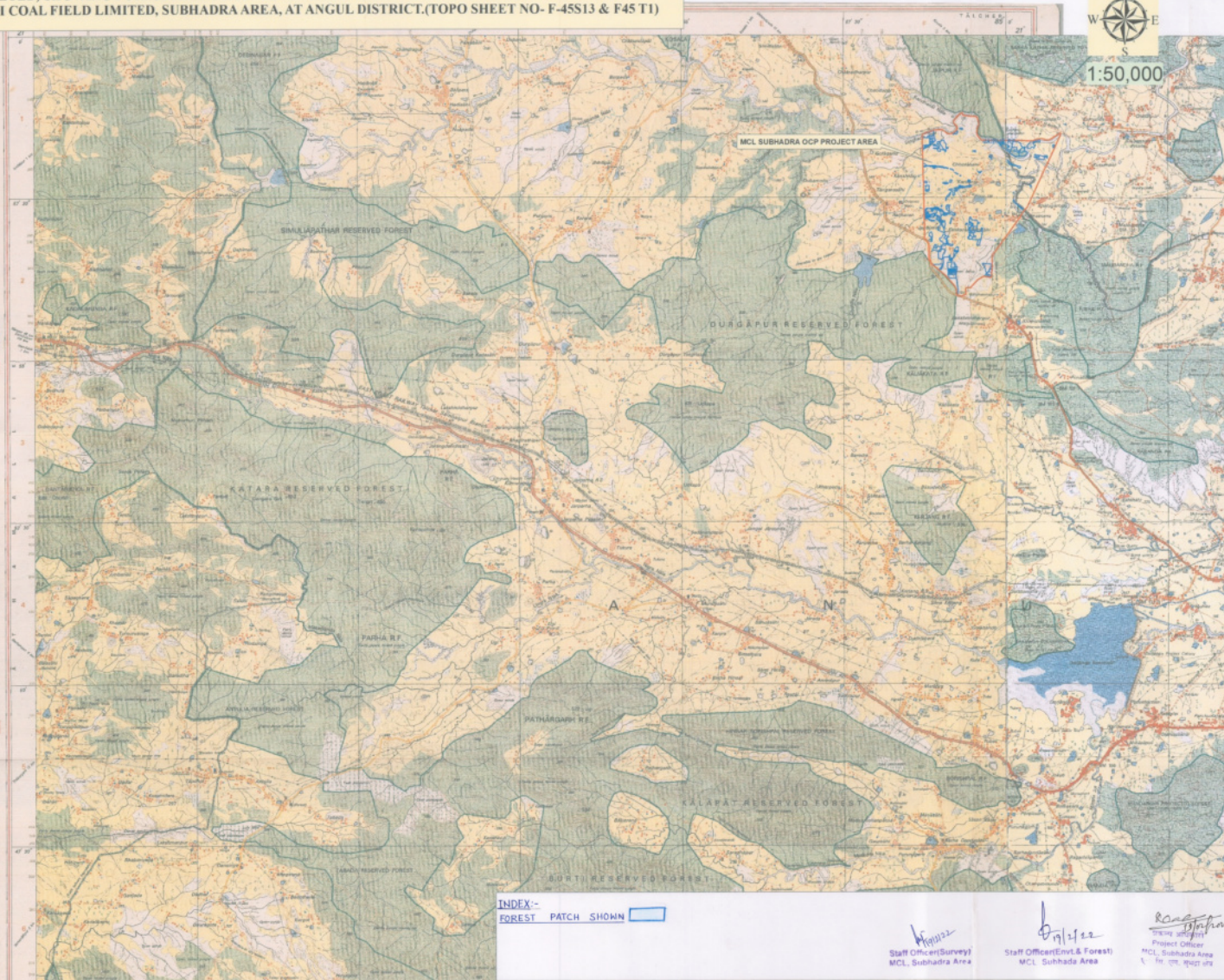
continued on page 10

For further details about this map, please contact:

© 2003 Blackwell



1:50,000



INDEX:-
FOREST PATCH SHOWN

Staff Officer(Survey)
MCL, Subhadra Area

Staff Officer(Env't & Forest)
MCL, Subhada Area

Ranjan
Project Officer
MCL, Subhadra Area
वि. ए. म. म. म. म. म.

Divisional Forest Officer
Angul, Division