

OPEN SERIES MAP
No. F43X16
 Scale 1:50,000

F43X11 (55H11)	F43X15 (55H15)	F44S3 (55L3)
F43X12 (55H12)	F43X16 (55H16)	F44S4 (55L4)
E43F9 (55E9)	E43F13 (55E13)	E44A1 (55E1)

भारतीय सर्वेक्षण विभाग SURVEY OF INDIA

1st Edition 2009 Price: Rs. 50/-

CONVENTIONAL SYMBOLS

Express highway with toll, with bridge, with distance stone	
Roads, metalled according to importance	
Roads, double carriageway according to importance	
Unmetalled road, Cart-track, Pack-track with pass, Foot-path	
Streams, with track in bed, underflow, Canal	
Dam, masonry or rock-filled, with lock, Weir	
Floor dy with water stream, with dam or rock, Tail-race	
Submerged rocks, Shoal, Swamp, Reeds	
Walls, brick, unlined, Tube-well, Spring, Tanks, perennial, dry	
Embankments, road or rail, tank, Broken ground	
Railways, broad gauge, double, single with station, under construction	
Railways, other gauges, double, single with distance stone, do.	
Mineral line or tramway, iron, Casing with tunnel	
Contours with sub-intervals, Rocky slopes, Cliffs	
Sand features (T.M., Cliffs, Hills, Plateaus, etc.)	
Towns or Villages, inhabited, deserted, Fort	
Hulk, permanent, temporary, Tower, Anicones	
Temple, Chhatra, Church, Mosque, Ghat, Tomb, Graves	
Lighthouse, Lightship, Buoy, Lighted, unlighted, Anchorage	
Mine, Vm or Vm, Open, Shaft, Shaft, Shaft, Shaft	
Plants, papyrus, other, Papyrus, Conifer, Bamboo, Other trees	
Areas, cultivated, wooded, Surveyed, tree	
Boundary, International	
State, demarcated, undemarcated	
district, subdivision, taluk or taluk, forest	
Boundary pillars, surveyed, uncoloured	
Height, measured, station, spot, approximate	
Bench-mark, geodetic, levelling, aneroid	
Post office, Telegraph office, Overland tank	
Rail house of inspection, bungalow, Circuit house, Police station	
Camping ground, Fossil, reserved, protected	
Special names, administrative, locality or tribal	
Hospital, Dispensary, Veterinary, Hospital, Dispensary	
Aerodrome, Heliport, Tented site	
Power line, with pylons surveyed, with poles unsurveyed	

NOTES -

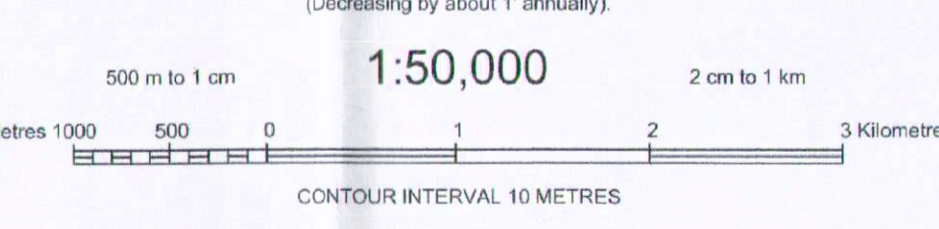
Heights are in metres and above Indian mean sea level.
 Contours are approximate.
 A relative height, \pm , represents the approximate height, in metres, between the top and bottom of a steep slope.
 The triangulated heights and contours in this sheet have not been adjusted to the heights of the earth levelled bench-marks and may not be strictly in accordance with them.
 Unmetalled roads, in this sheet, are generally metalled and cart-tracks (possible in dry season).
 Tanks, shown dry, in this sheet usually contain water from July to March.
 Hand pump is shown thus:

COMPILATION INDEX

A. Compiled from 1:25,000 survey, during 1956-67.
 Updated for major details during 2005-07.

Projection - UTM Datum - WGS 84

Magnetic Variation from True North about $\frac{1}{2}^{\circ}$ West in 2005.
 (Decreasing by about 1' annually)

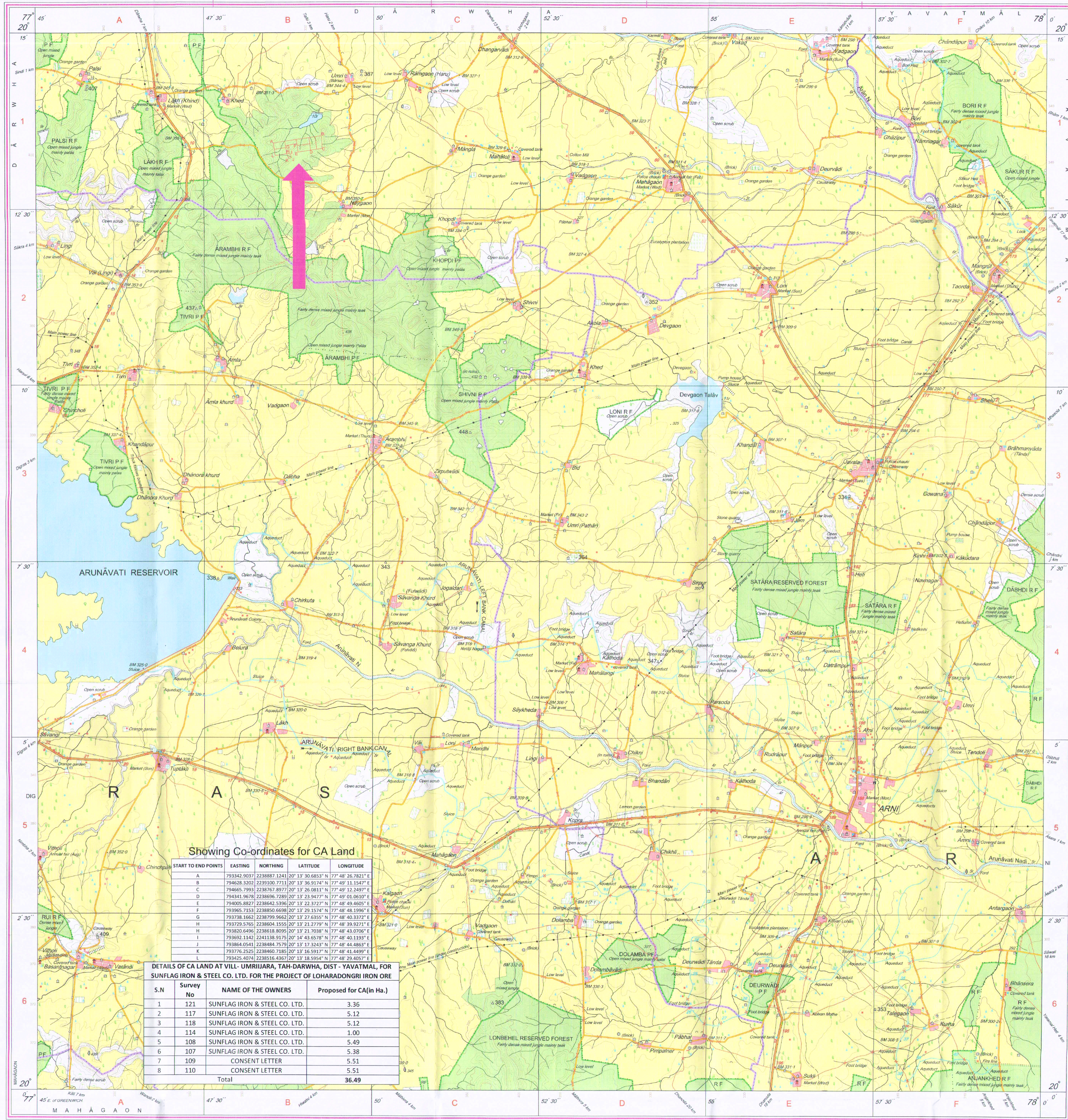


For further details about this map, please contact
 Director
 Maharashtra & Goa Geo-Spatial Data Centre
 Survey of India, Phule Nagar, Aundh Road
 Pune.
 Fax: 020 - 26514665

WEBSITE - www.surveyofindia.gov.in

Reproduction in whole or part by any means is prohibited without the written permission of Survey of India, the National Mapping Agency.

GOVERNMENT OF INDIA COPYRIGHT, 2009.



Showing Co-ordinates for CA Land

START TO END POINTS	EASTING	NORTHING	LATITUDE	LONGITUDE
A	793342.9037	2238887.1241	20° 13' 30.653" N	77° 48' 26.782" E
B	794628.3202	2239100.7713	20° 13' 36.9174" N	77° 49' 11.1547" E
C	794665.7993	2238767.8977	20° 13' 36.0811" N	77° 49' 12.2497" E
D	794831.9678	2238696.7289	20° 13' 32.9472" N	77° 49' 01.0607" E
E	794805.8827	2238642.5396	20° 13' 22.3727" N	77° 48' 49.4605" E
F	793965.7153	2238650.6688	20° 13' 29.3574" N	77° 48' 48.1996" E
G	793738.1602	2238799.9642	20° 13' 21.8351" N	77° 48' 33.771" E
H	793729.5765	2238604.1555	20° 13' 21.2779" N	77° 48' 39.9271" E
I	793820.6496	2238618.8095	20° 13' 21.7038" N	77° 48' 43.0796" E
J	793962.1342	2241338.9175	20° 14' 43.6378" N	77° 48' 40.1197" E
K	793864.0541	2238484.7579	20° 13' 17.3243" N	77° 48' 41.4883" E
L	793776.2525	2238460.7185	20° 13' 16.5917" N	77° 48' 41.4499" E
M	794245.4070	2239516.4051	20° 13' 18.5954" N	77° 48' 28.4007" E

DETAILS OF CA LAND AT VILL-UMRI IJARA, TAH-DARWHA, DIST- YAVATMAL, FOR SUNFLAG IRON & STEEL CO. LTD. FOR THE PROJECT OF LOHARADONGRI IRON ORE

S.N	Survey No	NAME OF THE OWNERS	Proposed for CA (in Ha.)
1	121	SUNFLAG IRON & STEEL CO. LTD.	3.36
2	117	SUNFLAG IRON & STEEL CO. LTD.	5.12
3	118	SUNFLAG IRON & STEEL CO. LTD.	5.12
4	114	SUNFLAG IRON & STEEL CO. LTD.	1.00
5	108	SUNFLAG IRON & STEEL CO. LTD.	5.49
6	107	SUNFLAG IRON & STEEL CO. LTD.	5.38
7	109	CONSENT LETTER	5.51
8	110	CONSENT LETTER	5.51
Total			36.49

REG. No. - SPC 0709 (Maharashtra & Goa) CDC-1 50,000

याचो नकाशा सर्वेक्षण विभागाच्या दिशेने तयार झाला आहे.
 Published under the direction of Surveyor General of India,
 Survey of India, Maharashtra & Goa Geo-Spatial Data Centre, Post Box No. 37, Dehra Dun - 248001 (Uttarakhand),
 Department of Science & Technology, Government of India.

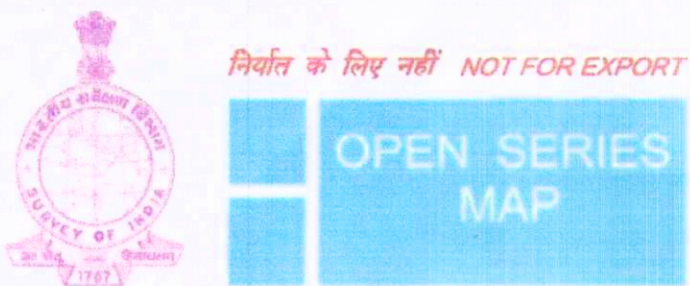
PRINTED AT THE SOUTHERN PRINTING GROUP OF SURVEY OF INDIA.

For Sunflag Iron & Steel Co. Ltd.
 Authorised Signatory



Dy. Conservator of Forests
 Davaerial Division

TOPOSHEET SHOWING DEGRADED FOREST LAND OVER AN AREA OF 16 HA OF WHICH PLANTATION AREA IS 12 HA AT VILL- IRTHAL, TAH - DARWHA, DIST- YAVATMAL (MS), FOR SUNFLAG IRON & STEEL CO. LTD. FOR THE LOHARA DONGRI IRON ORE PROJECT OVER AN ARE 35.94 Ha.



OPEN SERIES MAP

No. F43X11
Scale 1:50,000

MAHARASHTRA F43X6 (55H16)	MAHARASHTRA F43X10 (55H10)	MAHARASHTRA F43X14 (55H14)
MAHARASHTRA F43X7 (55H17)	MAHARASHTRA F43X11 (55H11)	MAHARASHTRA F43X15 (55H15)
MAHARASHTRA F43X8 (55H18)	MAHARASHTRA F43X12 (55H12)	MAHARASHTRA F43X16 (55H16)

भारतीय सर्वेक्षण विभाग SURVEY OF INDIA

1st Edition 2011. Price: Rs. 70/-

CONVENTIONAL SYMBOLS

- Express highway: with tol. with bridge, with distance stone
- Roads, metalled according to importance
- Unmetalled road: Cart road, Truck road with pass, Foot path
- Streams with track in bed, unbridged Canal
- Dams: masonry or rock filled, earthwork, Weir
- River: dry with water channel, with island & rocks, Tidal river
- Submerged rocks: Shoal, Swamp, Reeds
- Wells: lined, unlined, Tubewell, Spring, Tanks: perennial, dry
- Embankments: road or rail, bank, Broken ground
- Railways: broad gauge: double, single with station, under constn.
- Railways: other gauges: double, single with distance stone, do.
- Mineral line or tramway: Kin. Cutting with tunnel
- Contours with sub-features: Rocky slopes, Cliffs
- Sand features (1:100,000 scale): (2:100,000 scale)
- Towns or villages: established, deserted, Fort.
- Mark: permanent, temporary, Tower, Antenna
- Temples: Church, Mosque, Jain, Temple, Ghat, etc.
- Lighthouses, Lighthouse, Buoys, lights, unlighted, Anchorage
- Mine: View on hills, Grass, Scrub
- Palms: palmyra, other, Plantain, Coccin, Bamboo, Other trees
- Areas: cultivated, wooded, Surveyed tree
- Boundary: international
- state: demarcated, undemarcated
- district, subdivision, taluk or taluk, forest
- Boundary pillars: surveyed, uncoloured
- Height: triangulation station, point, approximate
- Bench-mark: geodetic, tertiary, canal
- Post office: Overhead tank
- Rest house or inspection bungalow, Circuit house, Police station
- Camping ground: Forest reserved, unreserved
- Spaced names: administrative, locality or tribal
- Hospital: Dispensary, Veterinary Hospital, Dispensary
- Aerodrome, Helipad, Tourist site
- Power line: with pylons surveyed, with poles unsurveyed

NOTES

- Heights are in metres and above Indian mean sea level
- Contours are approximate
- A relative height, e.g., 10, represents the approximate height, in metres, between the top and bottom of a steep slope
- Tanks shown dry, in this area usually contains water from July to December
- Towns are numerous throughout the sheet, only the important ones have been shown
- Unmetalled roads and cart-roads in this sheet are generally motorable in dry season

COMPILATION INDEX

- A. Surveyed during 1976-77. Updated for major details during 2009-07

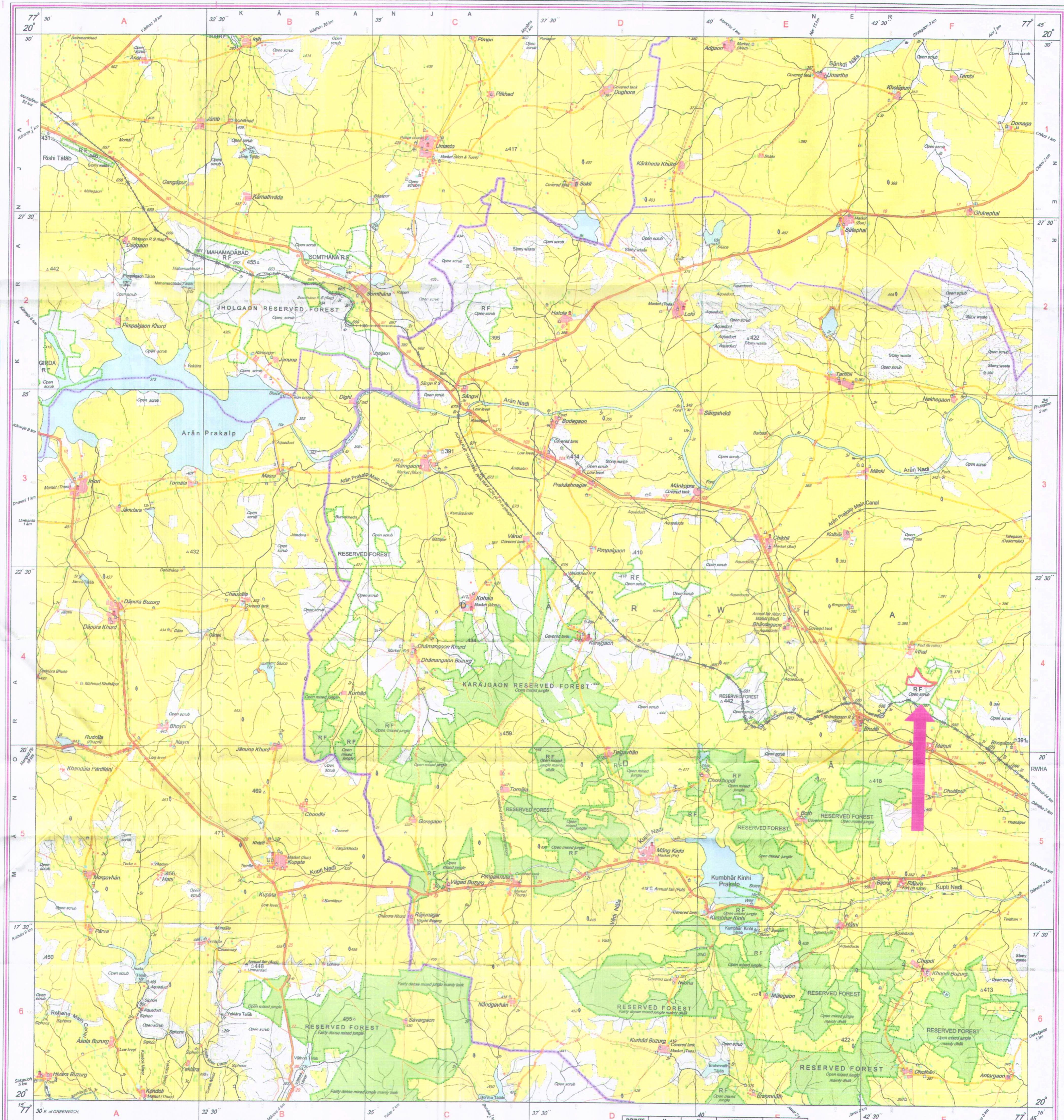
Projection - UTM Datum - WGS 84
Magnetic Variation from True North about 1° West in 2005.
(Decreasing by about 1" annually.)
Scale 1:50,000
CONTOUR INTERVAL 10 METRES

For further details about this map, please contact
Director
Maharashtra and Goa Geo-Spatial Data Centre
Survey of India, Phule Nagar, Alandi Road
Pune.

WEBSITE - www.surveyofindia.gov.in

Reproduction in whole or part by any means is prohibited without the written permission of Survey of India, the National Mapping Agency.

GOVERNMENT OF INDIA COPYRIGHT, 2011.



REG. NO. - 50P 071 (Maharashtra and Goa GDC-150-000)

RANGE - DARWHA
ROUND - DARWHA
BEAT - GHATKINHI
COMPARTMENT NO - 196

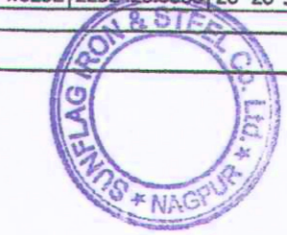
सर्वेक्षण विभाग, भारत सरकार, नई दिल्ली, के अधीन में प्रकाशित।
Published under the direction of Swarna Subba Rao, S.E., Surveyor General of India,
Survey of India, Habibganj Estate, Post Box No. 37, Colaba, Dist-400001 (Uttarakhand),
Department of Science & Technology, Government of India.

POINTS	X	Y	LATITUDE	LONGITUDE
A	783930.1435	2252622.3263	20° 21' 02.1019" N	77° 43' 10.5430" E
B	784133.8122	2252848.1741	20° 21' 09.3313" N	77° 43' 17.6886" E
C	784286.5556	2252815.7620	20° 21' 01.0972" N	77° 43' 22.8187" E
D	784336.2893	2252878.4728	20° 21' 00.4588" N	77° 43' 24.5107" E
E	784677.8857	2252465.3086	20° 20' 56.9947" N	77° 43' 36.2145" E
F	783874.0232	2252420.9986	20° 20' 55.5687" N	77° 43' 08.4945" E

LAND PROPOSE FOR GA PURPOSE

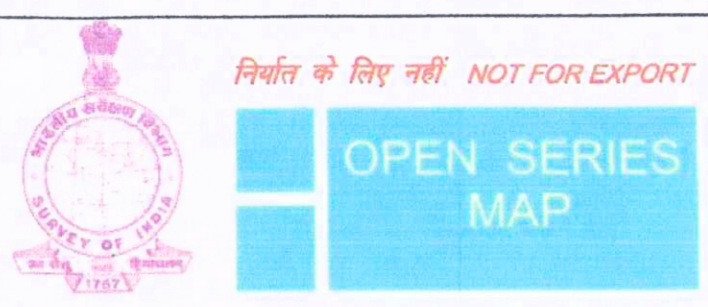
PRINTED AT THE SOUTHERN PRINTING GROUP OF SURVEY OF INDIA

For Sunflag Iron & Steel Co. Ltd.
Authorised Signatory



Director of Forests
Yavatmal Division

TOPOSHEET SHOWING DEGRADED FOREST LAND OVER AN AREA OF 27.49 HA OF WHICH PLANTATION AREA IS 24 HA AT VILL- PANDHURNA, TAH - DARWHA, DIST- YAVATMAL (MS), FOR SUNFLAG IRON & STEEL CO. LTD. FOR THE LOHARA DONGRI IRON ORE PROJECT OVER AN ARE 35.94 Ha.



No. F43X15
Scale 1:50,000

F43X10 (55H10)	Amravati MAHARASHTRA F43X14 (55H14)	F44S2 (55L2)
F43X11 (55H11)	Yavatmal MAHARASHTRA F43X15 (55H15)	F44S3 (55L3)
Washim MAHARASHTRA F43X12 (55H12)	F43X16 (55H16)	F44S4 (55L4)

1 Akola, MAHARASHTRA.

भारतीय सर्वेक्षण विभाग SURVEY OF INDIA
1st Edition 2010. Price : Rs. 50/-

CONVENTIONAL SYMBOLS

- Express Highway with toll with bridge with distance stone
- Roads, metalled according to importance
- Roads, double cartway according to importance
- Unmetalled road Cart-track Puck-track with pass, Foot path
- Stream with track in bed, underlined Canal
- Dam, masonry or rock-fill, earthenwork Weir
- River dry with water channel with silt and rocks, Tidal river
- Submerged rock, Shoal, Swamp, Road
- Wells, hand, tubewell, Spring, Tanks perennial, dry
- Embankments, road or rail tank, Broken ground
- Railways, broad gauge, double, single with station, under cover
- Railways, other gauges, double, single with distance stone, do
- Mineral line or tramway, K.R. Cutting with tunnel
- Contours with sub-features Rocky slopes Cliffs
- Sand dunes (Wind blown) (Dunes) (Sand dunes) (Sand dunes)
- Towns or villages, unincorporated, Fort
- Huts, permanent, temporary, Tower, Aniquities
- Temple, Chhatra, Church, Mosque, Ghat, Tomb, Graves
- Lighthouse, Lightship, buoy, lighted, unlighted, Anchorage
- Mine, Vene on trails, Glass, Sand
- Palm, patanya, other, Plantain, Cactus, Bamboo, Other trees
- Area cultivated, wooded, Surveyed tree
- Boundary, international
- State demarcated, undemarcated
- district, sub-division, taluk or taluk, forest
- Boundary pillars, surveyed, unlocated
- Height, triangulated station, point, approximate
- Bench mark, geodetic, levelling, canal
- Post office, Telegraph office, Overhead tank
- Head house or inspection bungalow, Guard house, Power station
- Camping ground, Forest, reserved, protected
- Spot names, administrative, locality or field
- Hospital, Dispensary, Veterinary hospital / Dispensary
- Aerodrome, Helipad, Tourist site
- Power line, with pylons surveyed, with poles unsurveyed

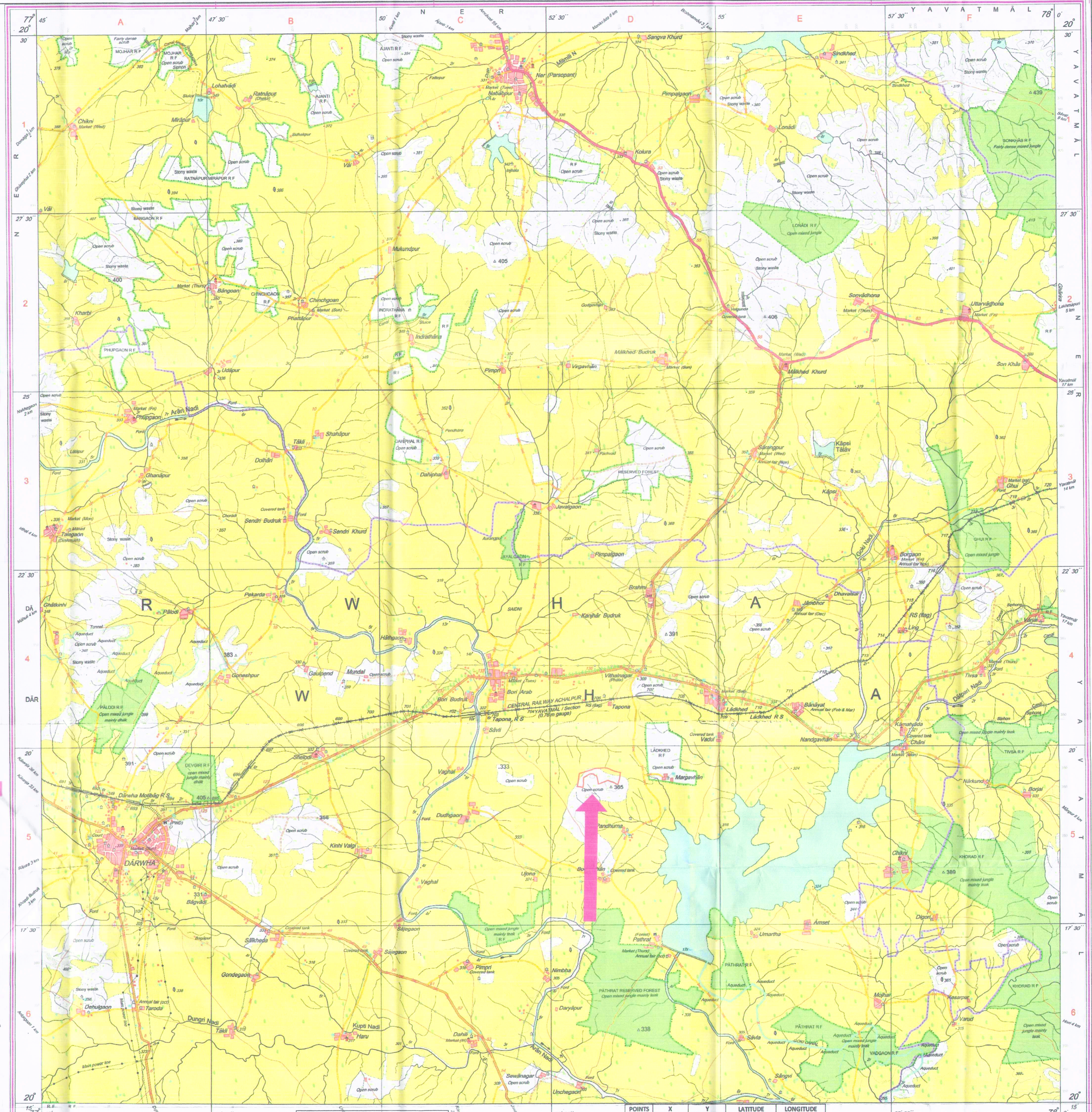
NOTES
Heights are in metres and above Indian mean sea level
Contours are approximate
Personnel names in this sheet are fordable from November to June at the places indicated as such
Unmetalled roads in this sheet are motorable in dry season whereas cart tracks are generally passable in dry season. Permission to use these roads in forest areas is required from the forest authorities.
The common boundaries of the Reserved Forests between Bilgaon R.F. & Phuggaon R.F. and Bilgaon R.F. & Chorgholga R.F. are approximate. No forest or other details are shown in these areas.
Numerical values given in this sheet are the approximate values for the purposes of reference only.
A relative height, 'v', represents the approximate height, in metres, between the top and bottom of a steep slope.

COMPILED INDEX

A	Surveyed during 1916-17. Updated for major details during 2006-07.
---	--

Projection - UTM Datum - WGS 84
Magnetic Variation from True North about 1/2° West in 2005.
(Decreasing by about 1" annually)
Scale 1:50,000
CONTOUR INTERVAL 10 METRES
For further details about the map, please contact
Director
Maharashtra & Goa Geo-Spatial Data Centre
Survey of India, Phule Nagar, Andri Road
Pune.

WEBSITE - www.surveyofindia.gov.in
Reproduction in whole or part by any means is prohibited without the written permission of Survey of India, the National Mapping Agency.
GOVERNMENT OF INDIA COPYRIGHT 2010



BEAT - LADKED
ROUND - PATHRAD
RANGE - DARWHA
COMPARTMENT NO - 96

POINTS	X	Y	LATITUDE	LONGITUDE
A	800960.7538	2250391.1950	20° 19' 40.1988" N	77° 52' 55.9029" E
B	801418.0957	2250244.6319	20° 19' 44.2740" N	77° 53' 11.7420" E
C	802009.7731	2250412.0121	20° 19' 40.2780" N	77° 53' 32.0532" E
D	801943.8097	2250114.7812	20° 19' 30.6588" N	77° 53' 29.6016" E
E	801449.1503	2250124.1709	20° 19' 31.2456" N	77° 53' 12.5700" E
F	801054.6744	2250035.1592	20° 19' 28.5780" N	77° 52' 58.9296" E
G	800902.0720	2250059.0836	20° 19' 29.4420" N	77° 52' 53.6880" E

PROPOSED LAND

For Sunflag Iron & Steel Co. L.
Authorized Signatory



Dy Conservator of Forests
Yavatmal Division