

चेक लिस्ट क्र. 05

प्रत्यावर्तन हेतु प्रस्तावित वन क्षेत्र का सर्वे
ऑफ इंडिया का मूल टोपोशीट 1:50000
स्केल पर

कार्यालय परियोजना प्रबंधक

(ए.डी.बी.प्रोजेक्ट)

छत्तीसगढ़ सड़क विकास परियोजना, लो.नि.वि., बिलासपुर (छ.ग.)

(E-mail:- eemp.bilaspur.cg@nic.in) Phone – 07752-400946

प्रमाण पत्र

आवेदक संस्थान छत्तीसगढ़ सड़क विकास परियोजना (ए.डी.बी. प्रोजेक्ट) लोक निर्माण विभाग बिलासपुर छत्तीसगढ़ द्वारा धरमजयगढ़ – कापू मार्ग का उन्नयन एवं पुनर्निर्माण कार्य प्रस्तावित है। इस हेतु धरमजयगढ़ वन मण्डल अंतर्गत परिक्षेत्र धरमजयगढ़ के कक्ष क्रमांक ग्राम गवारघुट्टी PF-355 रकबा 0.311 हेक्टे., PF-360 रकबा 0.213 हेक्टे., मिरिगुडा PF-354 रकबा 0.626 हेक्टे., परिक्षेत्र बोरो के कक्ष क्रमांक ग्राम नकना RF-641 रकबा 0.462 हेक्टे., और खम्हार RF-629 रकबा 0.486 हेक्टे. , परिक्षेत्र कापू के कक्ष क्रमांक ग्राम सोनपुर RF-80 रकबा 1.762 हेक्टे., और RF-35 रकबा 1.773 हेक्टे. कुल रकबा 5.633 हेक्टे. वन भूमि एवं धरमजयगढ़ तहसील के ग्राम धरमजयगढ़ में खसरा क्र. 1303/1क रकबा 0.434 हेक्टे. , 1303/1क/1 रकबा 0.650 हेक्टे. , 1310/1क/1 रकबा 0.344 हेक्टे., 1311/1क/1 रकबा 0.902 हेक्टे. ग्राम मिरिगुडा में खसरा क्र. 558/1क रकबा 0.830 हेक्टे. , 558/9क एवं 560/1क रकबा 1.132 हेक्टे. , 209/1क रकबा 0.540 हेक्टे., कुल रकबा 4.832 हेक्टे. राजस्व वन भूमि, कुल रकबा 10.465 हेक्टे. वन/राजस्व वन भूमि प्रभावित हो रही है।

जिसके प्रत्यावर्तन हेतु प्रस्तावित वन क्षेत्र का सर्वे ऑफ इंडिया का मूल टोपोशीट 1:50000 स्केल पर संलग्न है

(ए. के. दीवान)

परियोजना प्रबंधक

(ए.डी.बी. प्रोजेक्ट)

छत्तीसगढ़ सड़क विकास परियोजना
लो.नि.वि., बिलासपुर (छ.ग.)

OPEN SERIES
MAP

No. F44L2

Scale 1:50,000

F44K13 (64J/13)	Surguja CHHATTISGARH F44L1 (64N/1)	F44L5 (64N/5)
F44K14 (64J/14)	F44L2 (64N/2)	F44L6 (64N/6)
Korba CHHATTISGARH F44K15 (64J/15)	F44L3 (64N/3)	Raigrah CHHATTISGARH F44L7 (64N/7)

1 Jashpur, CHHATTISGARH.

भारतीय सर्वेक्षण विभाग

SURVEY OF INDIA

1st Edition 2011.

Price: Rs. 118/-

CONVENTIONAL SYMBOLS

Express highway	with bridge, with distance stone		750		750
Roads, metalled; according to importance					
Roads, double carriageway; according to importance					
Unmetalled road, Cart-track, Pack-track, with foot path					
Streams, with track in bed, undefined Canal					
Dams; masonry or rock-filled, earthen, Weir					
River, dry with water channel, with stand & rocks, Tidal river					
Swamped lands, Shoal, Swamp, Reeds					
Wells, lined, unlined, Tube-well, Springs, Tanks perennial, dry					
Embankments, road or rail, track, Broken ground					
Railways, broad gauge; double; single, under construction					
Railways, other gauges; double; single, with distance stone, etc.					
Mineral line or tramway, Kink, Cutting with tunnel					
Cuttings or sub-features, Rocky slopes, Cliffs					
Sea features (1) Jetty, (2) Sand-bank, (3) Shoal, (4) Shipping					
Towns & Villages, inhabited, Deserted, Fort					
Huts, permanent, Temporary, Tower, Aniquities					
Temple, Church, Monastery, Mosque, Lighthouse, Tower, Graves					
Lighthouse, Lighthouse, Buoy, Lighted, unlighted, Anchorage					
Mine, Mine or trails, Grass, Scrub					
Palms, palms; other, Plantain, Corn, Bamboo, Other trees					
Areas: cultivated, wooded, Swamped tree					
Boundary, international					
	state demarcated; unsurveyed				
	state demarcated; tribal or tribal forest				
Boundary, plains, surveyed, uncoloured					
Height, in feet, approximate, exact			200		200
Benchmark, magnetic, survey, astronomical			BM 633		BM 633
Post office, Telegraphic office, Overhead tank					
Rail foot-bridge or suspension bridge, Circular house, Police station					
Camping ground, Forest: reserved, protected					
Spaced names: administrative, locally or tribal			KKRI		KKRI
Hospital, Dispensary, Veterinary, Hospital / Dispensary					
Aerodrome, Heliport, Tourist site					
Power line, with pylons; unsurveyed, with poles unsurveyed					

REFE

PWD Public Works Department.

NOTES :-

Heights are in metres and above Indian mean sea level.
Contours are approximate.
A relative height, Δ , represents the approximate height, in metres, between the top and bottom of a steep slope.
The exterior boundaries of areas of Reserved or Protected Forests are shown by green ribands

COMPILATION INDEX

A. Surveyed during 1967-69. Updated for major details during 2005-06.

Projection - UTM Datum - WGS 84

Magnetic Variation from True North about $\frac{1}{2}^{\circ}$ West in 2005.

500 m to 1 cm 1:50,000 2 cm to 1 km

Metres 1000 500 0 1 2 3 Kilometres

CONTOUR INTERVAL 20 METRES

For further details about this map, please contact
Director
Chhattisgarh Geo-Spatial Data Centre
Survey of India, Pachpedi Naka
Raipur.


WEBSITE - www.surveyofindia.gov.in

Reproduction in whole or part by any means is prohibited without the written permission of Survey of India, the National Mapping Agency.

GOVERNMENT OF INDIA COPYRIGHT, 2011.



REG. NO. 9922-SPG D'II (Chhattisgarh GDC-I:50,000)-1015 '15.

भारत के महासर्वेक्षक राजेन्द्र मणि त्रिपाठी, एमएससी (फिजिक्स), पीजीडिप्लोमा (कार्टो) (आईटीसी, नीदरलैंड्स) के निदेशन में प्रकाशित, 
Published under the direction of Rajendra Mani Tripathi, M.Sc. (Physics), P.G. Diploma (Carto) (ITC, The Netherlands) Surveyor General of India,
Survey of India, Hāthibarkala Estate, Post Box No. 37, Dehra Dūn – 248001 (Uttarakhand),
Department of Science & Technology, Government of India.

वनस्पण्डलधिकारी

PRINTED AT THE SOUTHERN PRINTING GROUP OF SURVEY OF INDIA

PRINTED AT THE SOUVENIR PRINTING PRESS, SURAT, INDIA.

बन परियोजना अधिकारी बन परियोजना अधिकारी
परियोजना कोटे कम्प्यूटर (सा.) बन परियोजना अधिकारी

C.G. Road Development Project
P.W.D. Bilaspur (G.)

उपवन मण्डलाधिकार

No. F44L6

Scale 1:50,000

F44L1 (64N/1)	Surguja CHHATTISGARH F44L5 (64N/5)	Jashpur CHHATTISGARH F44L9 (64N/9)
F44L2 (64N/2)	F44L6 (64N/6)	F44L10 (64N/10)
F44L3 (64N/3)	Rajgarh CHHATTISGARH F44L7 (64N/7)	F44L11 (64N/11)

1 Korba, CHHATTISGARH.

भारतीय सर्वेक्षण विभाग

SURVEY OF INDIA

1st Edition 2012.

Price : Rs. 85/-

CONVENTIONAL SYMBOLS

Express highway, with toll, with bridge, with distance stone
Roads, metalled, according to importance
Roads, double metalled, according to importance
Unmetalled road, Cart-track, Pack-track with pass, Foot-path
Streams, with track in bed, underlined, Canal
Dams, masonry or rock-filled, earthwork, Weir
River, dry with water channel, with island & rocks, Tidal river
Submerged rocks, Shoal, Swamp, Reeds
Wells, lined, unlined, Tube-well, Spring, Tank, perennial, dry
Embankment, road or rail, broken ground
Railways, broad gauge, double, single, under construction
Railways, other gauges, double, single with distance stone, do.
Mineral line or tramway, Km. Cutting with tunnel
Contours with sub-features, Rocky slopes, Cliffs
Soil features: (1) Sal, (2) Sand, (3) Impermanent, (3) Stone, (shifting)
Towns or Villages, inhabited, deserted, Fort
Hut, permanent, temporary, Tower, Antiquities
Temple, Chhatra, Church, Mosque, Idgah, Tomb, Grave, etc.
Lighthouse, Lightship, Buoy, lighted, unlighted, Anchorage
Mine, Vine on trees, Grass, Scrub
Palm, palm-tree, other, Nutan, Coffee, Bamboo, Other trees
Areas, cultivated, wooded, Surveyed trees
Boundary, International
state, demarcated, undemarcated
district, subdivision, tahsil or taluk, forest
Boundary pillars, surveyed, unlocated
Heights, triangulated, station, point, approximate
Bench-mark, geodetic, tertiary, canal
Post office, Telegraph office, Overhead tank
Rest house or inspection bungalow, Circuit house, Police station
Camping ground, Forest, reserved, protected
Spaced houses, administrative, locality or village
Hospital, Dispensary, Veterinary Hospital / Dispensary
Aerodrome, Helipad, Tourist site
Power line, with pylons surveyed, with poles unsurveyed

REFERENCES

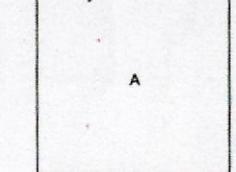
NH 78 National Highway No. 78
PWD Public Works Department.

NOTES

Heights are in metres and above Indian mean sea level.
Contours are approximate.
A station height, e.g., 20, represents the approximate height, in metres, between the top and bottom of a steep slope.
Unmetalled roads and cart-tracks in this sheet are generally motorable in dry season.

COMPILATION INDEX

A Surveyed during 1968-69, Updated for major details during 2005-06.



Projection - UTM Datum - WGS 84

Magnetic Variation from True North about 1° West in 2005.
(Decreasing by about 1° annually).

1:50,000

500 m to 1 cm
2 cm to 1 km
Metres 1000 500 0 1 2 3 Kilometres
CONTOUR INTERVAL 20 METRES

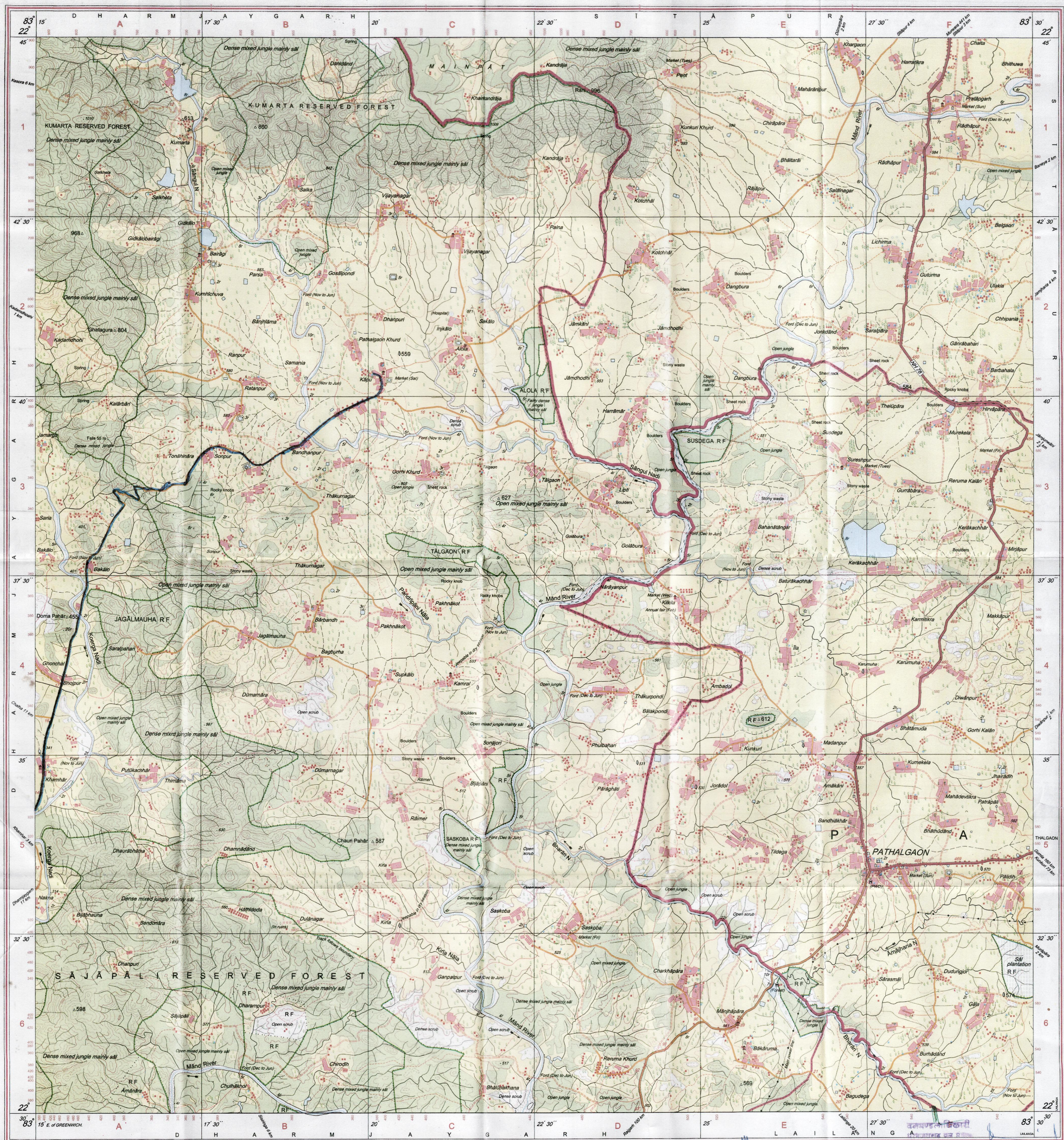
For further details about this map, please contact

Director
Chhattisgarh Geo-Spatial Data Centre
Survey of India, Pachpedi Naka
Raipur.

WEBSITE - www.surveyofindia.gov.in

Reproduction in whole or part by any means is prohibited
without the written permission of Survey of India, the
National Mapping Agency.

GOVERNMENT OF INDIA COPYRIGHT, 2012.



REG. No. 9725-SPG D/11 (Chhattisgarh GDC-1:50,000/4015) 12.

माना के सम्मिलित के रूप में माना, के द्वारा के द्वारा
Published under the direction of Dr. Swarna Subba Rao, Surveyor General of India.
Survey of India, Hattibarkala Estate, Post Box No.37, Dehra Dun-248001 (Uttarakhand).
Department of Science & Technology, Government of India.

PRINTED AT THE SOUTHERN PRINTING GROUP OF SURVEY OF INDIA

(ADB Project)

W. L. Dasgupta (C.G.)



निर्वात के लिए नहीं NOT FOR EXPORT

OPEN SERIES
MAP

No. F44L3

Scale 1:50,000

F44K14 (64J/14)	F44L2 (64N/2)	F44L6 (64N/6)
Korba CHHATTISGARH F44K15 (64J/15)	F44L3 (64N/3)	F44L7 (64N/7) Raigarh CHHATTISGARH
F44K16 (64J/16) Jangir-Champa CHHATTISGARH	F44L4 (64N/4)	F44L8 (64N/8)

1 Surguja, CHHATTISGARH.
2 Jashpur, CHHATTISGARH.

भारतीय सर्वेक्षण विभाग

SURVEY OF INDIA

1st Edition 2011.

Price: Rs. 118/-

CONVENTIONAL SYMBOLS

Express highway, with toll, with bridge, with distance stone	7/9	20
Roads, metalled, according to importance	1/2	3/4
Roads, double carriageway, according to importance	1/2	3/4
Unmetalled road, Cart-track, Pack-track with pass, Foot-path	1/2	3/4
Streams, with track in bed, undefined, Canal	1/2	3/4
Dams, masonry or rock-filled, earthwork, Well	1/2	3/4
River, dry with water channel, with island & rocks, Tidal river	1/2	3/4
Submerged rocks, Shoal, Swamps, Reeds	1/2	3/4
Wells, lined, unlined, Tube-well, Spring, Tanks, perennial, dry	1/2	3/4
Embankments, road or rail, tank, Broken ground	1/2	3/4
Railways, broad gauge, double, single with station, under constr.	1/2	3/4
Railways, other gauges, double, single with distance stone, do	1/2	3/4
Mineral line or tramway, Kila, Cutting with tunnel	1/2	3/4
Contours with sub-features, Rocky slopes, Cliffs	1/2	3/4
Sand features (flat, (2) sand-hills, permanent), (3) dunes (shifting)	1/2	3/4
Towns or Villages, inhabited, deserted, Fort	1/2	3/4
Huts, permanent, temporary, Tower, Antiquities	1/2	3/4
Temple, Chhat, Church, Mosque, Idgh, Tomb, Graves	1/2	3/4
Lighthouse, Lightship, Buoy, light, unlighted, Anchorage	1/2	3/4
Mine, Vene on hills, Grass, Scrub	1/2	3/4
Palms, palms, other, Plantain, Conifer, Bamboo, Other trees	1/2	3/4
Areas, cultivated, wooded, Surveyed tree	1/2	3/4
Boundary, international	1/2	3/4
state, demarcated, undemarcated	1/2	3/4
Boundary pillars, surveyed, unlocated	1/2	3/4
Heights, triangulated station, point, approximate	1/2	3/4
Bench-mark, geodetic, tertiary, canal	1/2	3/4
Post office, Telegraph office, Overhead tank	1/2	3/4
Rest house or inspection bungalow, Circuit house, Police station	1/2	3/4
Camping ground, Forest, reserved, protected	1/2	3/4
Spaced names administrative locality or tribal	1/2	3/4
Hospital, Dispensary, Veterinary Hospital, Dispensary	1/2	3/4
Airline, Helipad, Tourist site	1/2	3/4
Power line with pylons surveyed, with poles unsurveyed	1/2	3/4

REFERENCE

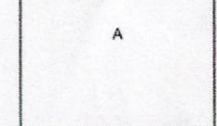
PWD Public Works Department

NOTES :-

Heights are in metres and above Indian mean sea level.
Contours are approximate.
A relative height, Δ represents the approximate height, in metres, between the top and bottom of a steep slope.
Tanks shown dry, in this area usually contain water from July to December.
Unmetalled roads and cart-tracks in this sheet are generally motorable in dry season. Permission to use these along canals is required from irrigation authorities.

COMPILED INDEX

A. Surveyed during 1967-68. Updated for major details during 2004-05.



Projection - UTM Datum - WGS 84

Magnetic Variation from True North about $\frac{1}{2}^\circ$ West in 2005.
(Decreasing by about $1'$ annually)

500 m to 1 cm
1:50,000
2 cm to 1 km
3 Kilometres
CONTOUR INTERVAL 20 METRES

For further details about this map, please contact
Director
Chhattisgarh Geo-Spatial Data Centre
Survey of India, Pachpedi Naka
Raipur.

WEBSITE - www.surveyofindia.gov.in

Reproduction in whole or part by any means is prohibited
without the written permission of Survey of India, the
National Mapping Agency.

GOVERNMENT OF INDIA COPYRIGHT, 2011.



REG. NO. 9928-SPG D/1 (Chhattisgarh) GDC-1:50,000 1:015 1:5

भारत के सर्वेक्षण विभाग द्वारा तैयार किया गया है। (भौतिक), पी.जी. डिप्लोमा (कार्टो) (ITC, The Netherlands) सर्वेक्षण विभाग द्वारा तैयार किया गया है।
Published under the direction of Rajendra Mani Tripathi, M.Sc. (Physics), P.G. Diploma (Carto) (ITC, The Netherlands) Survey of India, Harnahalka Estate, Post Box No. 37, Dehra Dun - 248001 (Uttarakhand).
Survey of India, Harnahalka Estate, Post Box No. 37, Dehra Dun - 248001 (Uttarakhand).
Department of Science & Technology, Government of India.

PRINTED AT THE SOUTHERN PUBLISHING WORKS, INDIA

(ADB Project)

भारत के सर्वेक्षण विभाग द्वारा तैयार किया गया है। (भौतिक), पी.जी. डिप्लोमा (कार्टो) (ITC, The Netherlands) सर्वेक्षण विभाग द्वारा तैयार किया गया है।
भारत के सर्वेक्षण विभाग द्वारा तैयार किया गया है। (भौतिक), पी.जी. डिप्लोमा (कार्टो) (ITC, The Netherlands) सर्वेक्षण विभाग द्वारा तैयार किया गया है।
भारत के सर्वेक्षण विभाग द्वारा तैयार किया गया है। (भौतिक), पी.जी. डिप्लोमा (कार्टो) (ITC, The Netherlands) सर्वेक्षण विभाग द्वारा तैयार किया गया है।

भारत के सर्वेक्षण विभाग द्वारा तैयार किया गया है। (भौतिक), पी.जी. डिप्लोमा (कार्टो) (ITC, The Netherlands) सर्वेक्षण विभाग द्वारा तैयार किया गया है।

भारत के सर्वेक्षण विभाग द्वारा तैयार किया गया है। (भौतिक), पी.जी. डिप्लोमा (कार्टो) (ITC, The Netherlands) सर्वेक्षण विभाग द्वारा तैयार किया गया है।

भारत के सर्वेक्षण विभाग द्वारा तैयार किया गया है। (भौतिक), पी.जी. डिप्लोमा (कार्टो) (ITC, The Netherlands) सर्वेक्षण विभाग द्वारा तैयार किया गया है।